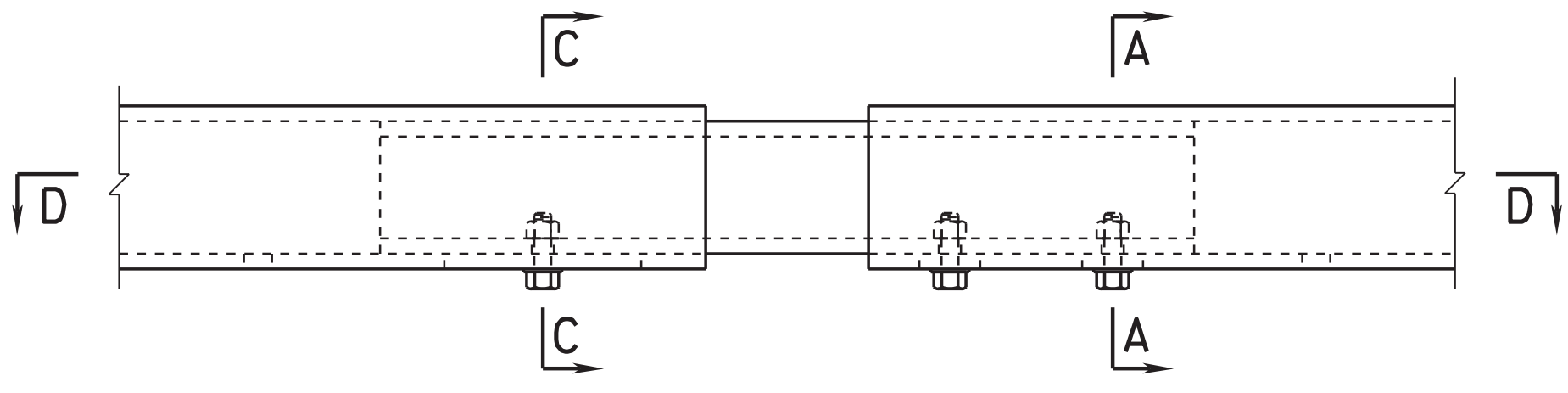
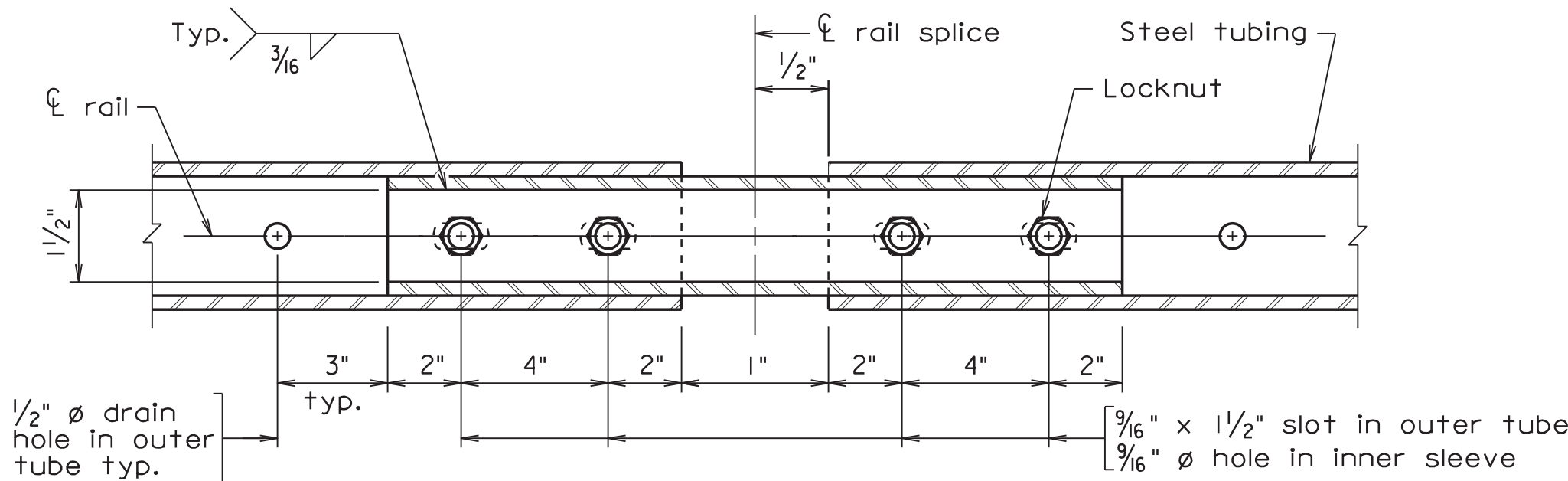


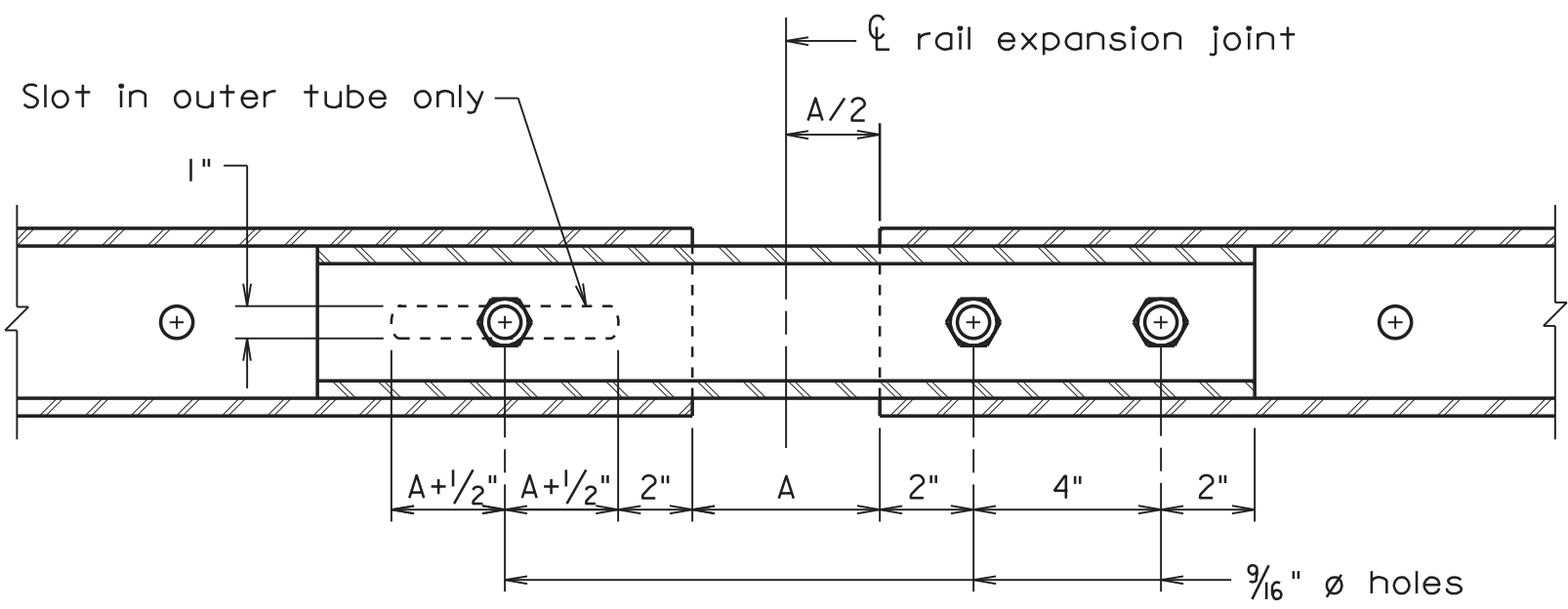
ELEVATION VIEW



ELEVATION VIEW

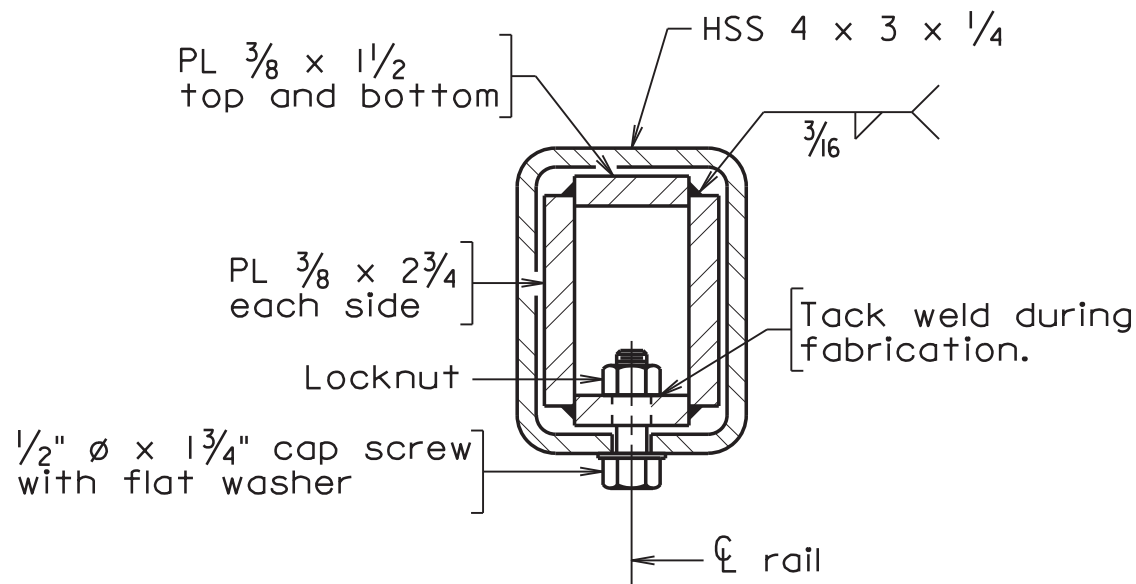


SECTION B-B



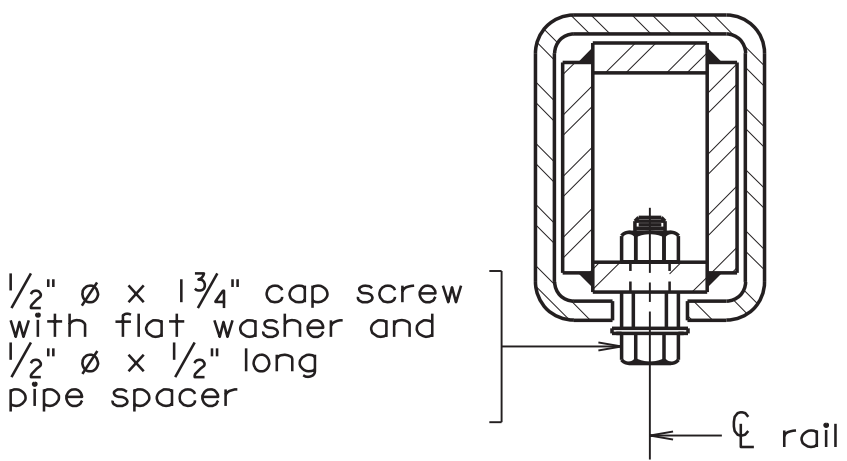
SECTION D-D

For details and dimensions not shown, see Section B-B.



SECTION A-A
SECTION AT RAIL SPLICE

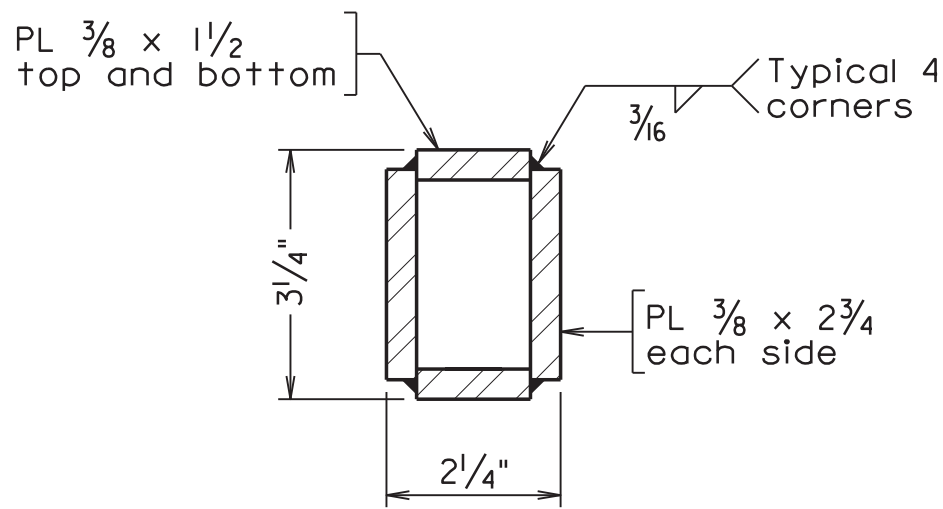
RAIL SPLICE DETAILS



SECTION C-C

Details not shown similar to Section A-A.

RAIL EXPANSION JOINT DETAILS



FINISHED DIMENSIONS OF INNER SLEEVE RAIL

Notes (cont'd):

Rail expansion joint shall be provided between any two posts which span a deck expansion joint. Dimension A for expansion joint is equal to deck joint opening plus 1". Bolts in slot on the expansion side shall be lightened only to a point that will allow railing movement.

Drain holes shall be 1/2" diameter and shall be provided in all rails approximately half-way between posts. Drain holes shall be provided at each end of rail.

Anchor bolts may be set normal to profile grade but may require beveled washers.

Barrier delineator size, color, and spacing shall be in accordance with the Specifications. Reflective surface of barrier delineator, in all instances, shall face oncoming traffic.

Maximum spacing of grooves in pedestal shall be limited to 3 x post spacing, shall be centered between posts and shall be no closer than 10'-0" to joints.

Alternate details for inner sleeve rail fabrication and bolted connection to outer tube may be submitted, but only used if approved by the Structure and Bridge Division Engineering Services Program Area. No thru-bolt connections will be approved.

Bid item for railing shall include rails, rail posts, bearing pads, bolts, anchor assemblies, sleeves, barrier delineators, grounding materials and other associated metal parts as shown on the plans. Also included are concrete noted in the plans and reinforcing steel indicated in the reinforcing steel schedule.

COMMONWEALTH OF VIRGINIA

03/10/2017

CHAD M. THOMAS

Professional Engineer

03/10/2017

CHAD M. THOMAS

Professional Engineer

Issue Date:

03/10/17

Drawn By:

DKA

Designed By:

MLF

Checked By:

CMT

Date:

03/10/17

City of Roanoke

Planning, Building, & Development

COMPREHENSIVE DEVELOPMENT PLAN

APPROVED

by Adrian Gilbert 03/15/2018

Berkeley Road Over Glade Creek Tributary A

BR27D Rail Connections

AND NOTES

CITY OF ROANOKE, VA

Vertical Scale:

N/A

Horizontal Scale:

NOT TO SCALE

Commission Number:

34301

Sheet No.:

B-14