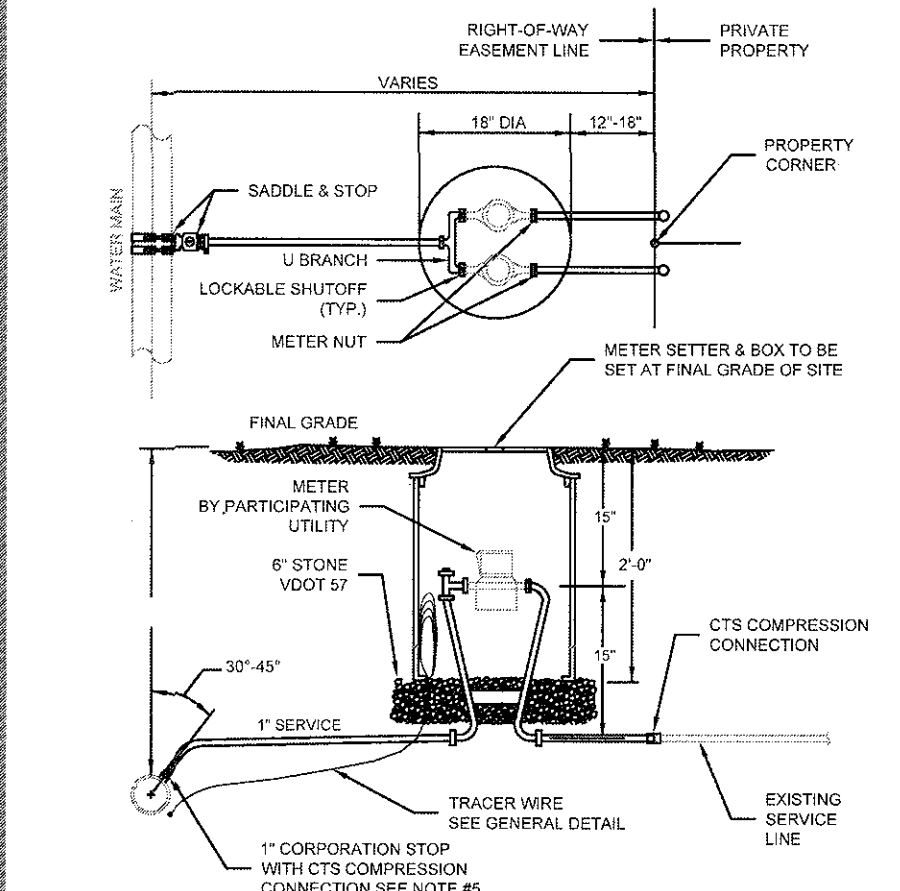
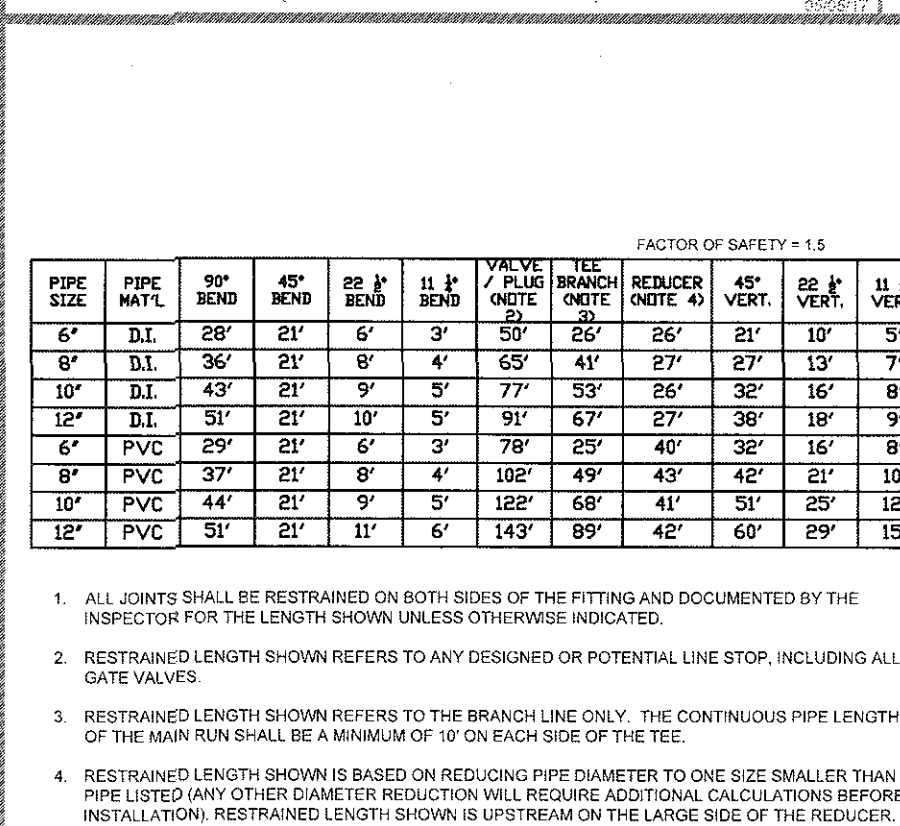


- [illegible]

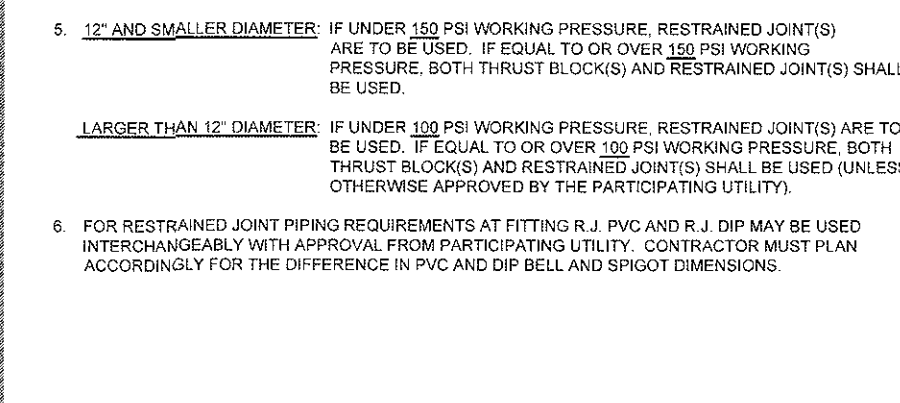


WESTERN VIRGINIA REGIONAL - CONSTRUCTION DETAIL

- DOUBLE RESIDENTIAL  
WATER SERVICE  
(REPLACEMENT OF EXISTING SERVICE)

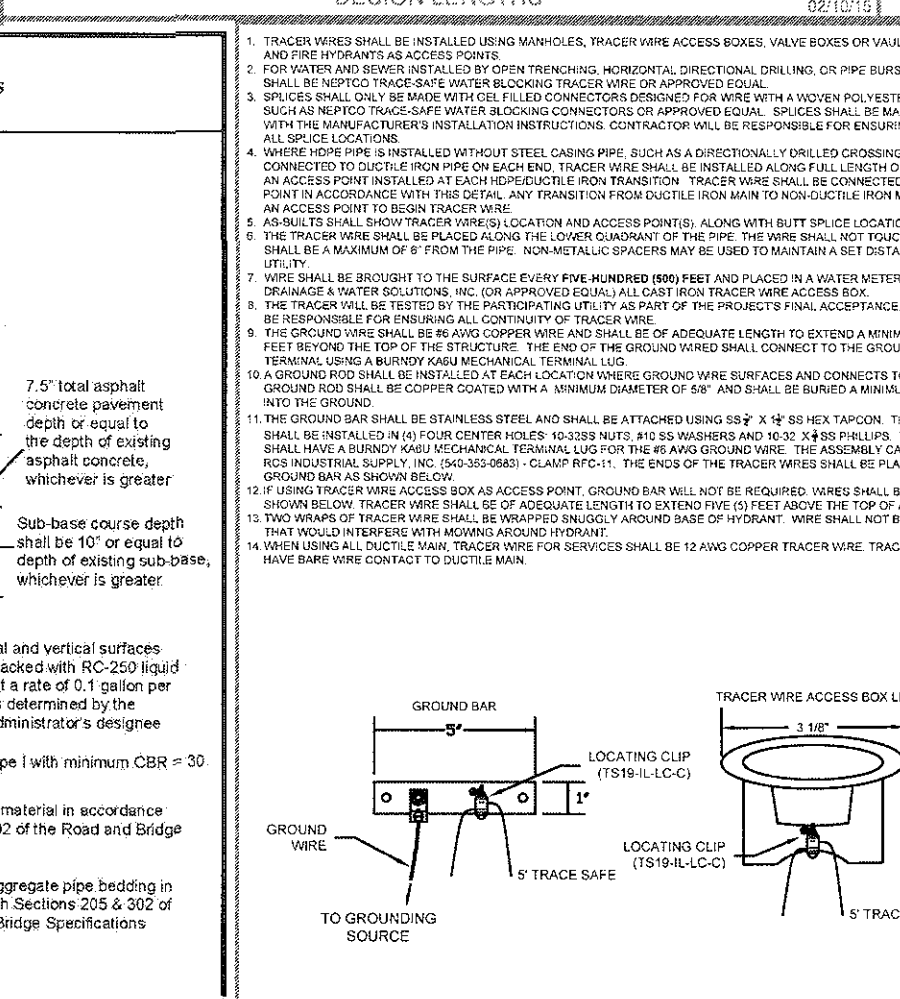


### TYPICAL WATER PRESSURE TEST RIG



WESTERN VIRGINIA REGIONAL - CONSTRUCTION DETAIL

- | MINIMUM THRUST RESTRAINT<br>OF PIPE JOINTS<br>DESIGN LENGTHS |     | W   |
|--|-----|-----|
| 1  | 2   | 3   |
| 4  | 5   | 6   |
| 7  | 8   | 9   |
| 10   | 11  | 12  |
| 13   | 14  | 15  |
| 16   | 17  | 18  |
| 19   | 20  | 21  |
| 22   | 23  | 24  |
| 25   | 26  | 27  |
| 28   | 29  | 30  |
| 31   | 32  | 33  |
| 34   | 35  | 36  |
| 37   | 38  | 39  |
| 40   | 41  | 42  |
| 43   | 44  | 45  |
| 46   | 47  | 48  |
| 49   | 50  | 51  |
| 52   | 53  | 54  |
| 55   | 56  | 57  |
| 58   | 59  | 60  |
| 61   | 62  | 63  |
| 64   | 65  | 66  |
| 67   | 68  | 69  |
| 70   | 71  | 72  |
| 73   | 74  | 75  |
| 76   | 77  | 78  |
| 79   | 80  | 81  |
| 82   | 83  | 84  |
| 85   | 86  | 87  |
| 88   | 89  | 90  |
| 91   | 92  | 93  |
| 94   | 95  | 96  |
| 97   | 98  | 99  |
| 100  | 101 | 102 |
| 103  | 104 | 105 |
| 106  | 107 | 108 |
| 109  | 110 | 111 |
| 112  | 113 | 114 |
| 115  | 116 | 117 |
| 118  | 119 | 120 |
| 121  | 122 | 123 |
| 124  | 125 | 126 |
| 127  | 128 | 129 |
| 130  | 131 | 132 |
| 133  | 134 | 135 |
| 136  | 137 | 138 |
| 139  | 140 | 141 |
| 142  | 143 | 144 |
| 145  | 146 | 147 |
| 148  | 149 | 150 |
| 151  | 152 | 153 |
| 154  | 155 | 156 |
| 157  | 158 | 159 |
| 160  | 161 | 162 |
| 163  | 164 | 165 |
| 166  | 167 | 168 |
| 169  | 170 | 171 |
| 172  | 173 | 174 |
| 175  | 176 | 177 |
| 178  | 179 | 180 |
| 181  | 182 | 183 |
| 184  | 185 | 186 |
| 187  | 188 | 189 |
| 190  | 191 | 192 |
| 193  | 194 | 195 |
| 196  | 197 | 198 |
| 199  | 200 | 201 |
| 202  | 203 | 204 |
| 205  | 206 | 207 |
| 208  | 209 | 210 |
| 211  | 212 | 213 |
| 214  | 215 | 216 |
| 217  | 218 | 219 |
| 220  | 221 | 222 |
| 223  | 224 | 225 |
| 226  | 227 | 228 |
| 229  | 230 | 231 |
| 232  | 233 | 234 |
| 235  | 236 | 237 |
| 238  | 239 | 240 |
| 241  | 242 | 243 |
| 244  | 245 | 246 |
| 247  | 248 | 249 |
| 250  | 251 | 252 |
| 253  | 254 | 255 |
| 256  | 257 | 258 |
| 259  | 260 | 261 |
| 262  | 263 | 264 |
| 265  | 266 | 267 |
| 268  | 269 | 270 |
| 271  | 272 | 273 |
| 274  | 275 | 276 |
| 277  | 278 | 279 |
| 280  | 281 | 282 |
| 283  | 284 | 285 |
| 286  | 287 | 288 |
| 289  | 290 | 291 |
| 292  | 293 | 294 |
| 295  | 296 | 297 |
| 298  | 299 | 300 |
| 301  | 302 | 303 |
| 304  | 305 | 306 |
| 307  | 308 | 309 |
| 310  | 311 | 312 |
| 313  | 314 | 315 |
| 316  | 317 | 318 |
| 319  | 320 | 321 |
| 322  | 323 | 324 |
| 325  | 326 | 327 |
| 328  | 329 | 330 |
| 331  | 332 | 333 |
| 334  | 335 | 336 |
| 337  | 338 | 339 |
| 340  | 341 | 342 |
| 343  | 344 | 345 |
| 346  | 347 | 348 |
| 349  | 350 | 351 |
| 352  | 353 | 354 |
| 355  | 356 | 357 |
| 358  | 359 | 360 |
| 361  | 362 | 363 |
| 364  | 365 | 366 |

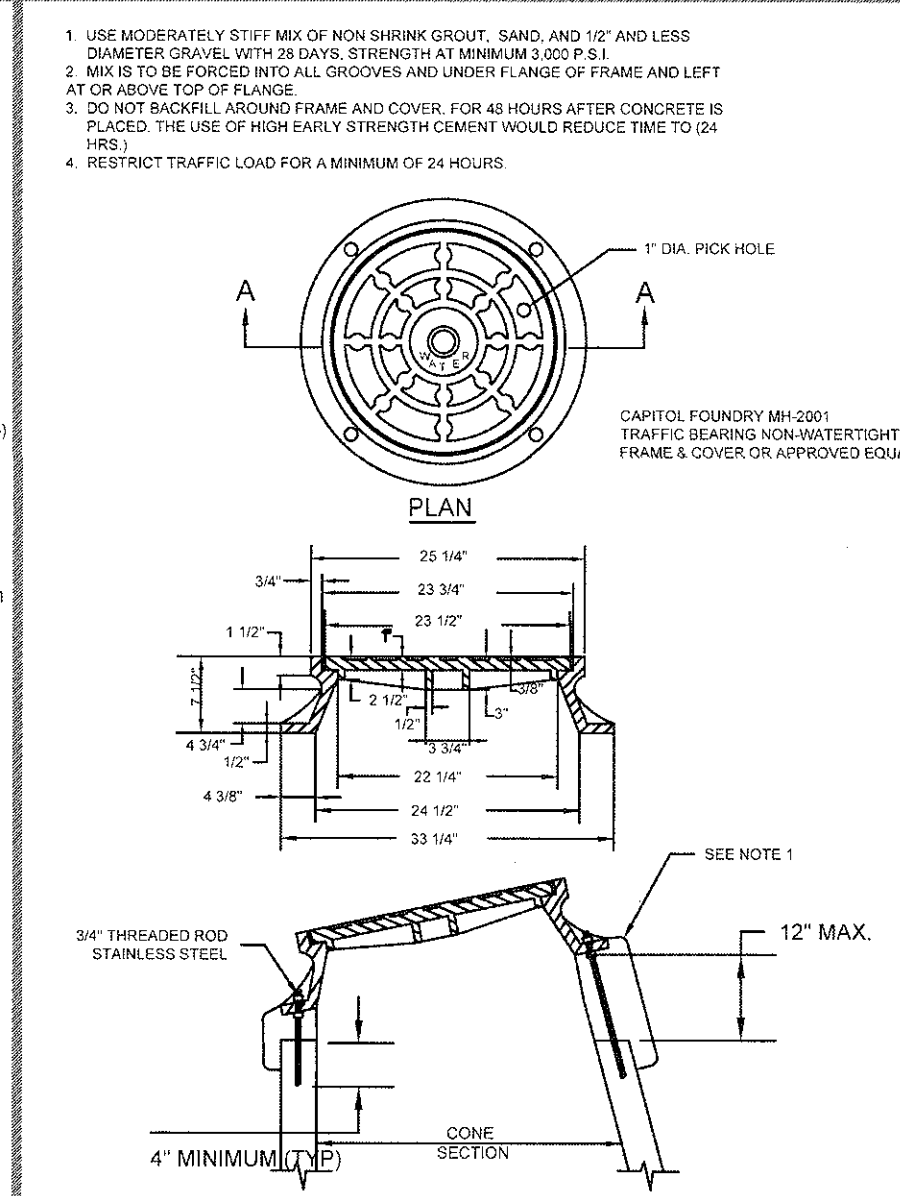


### Asphalt Pavement Restoration Detail for Open Cut Utility Installations

- 

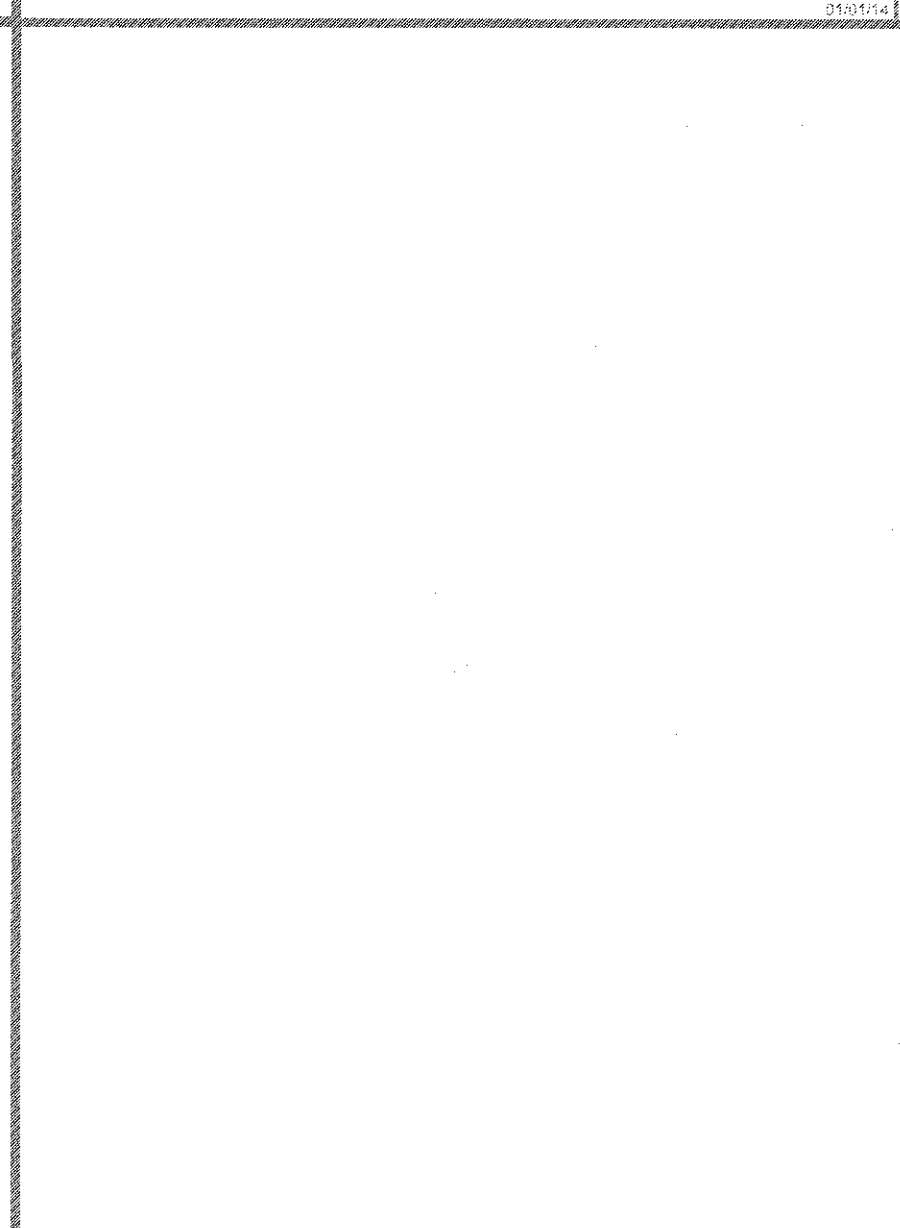
Date: August 27, 2014

**Not to Scale**

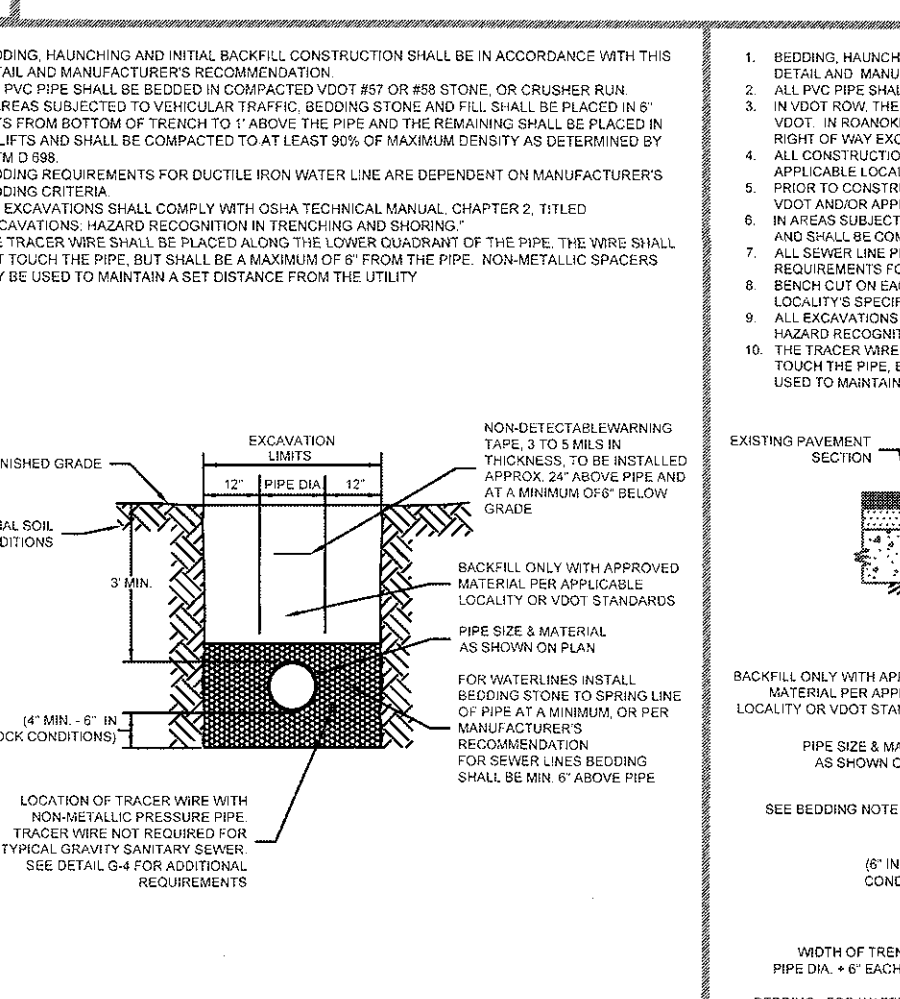


WESTERN VIRGINIA REGIONAL - CONSTRUCTION DATA

- VAULT FRAME  
AND COVER



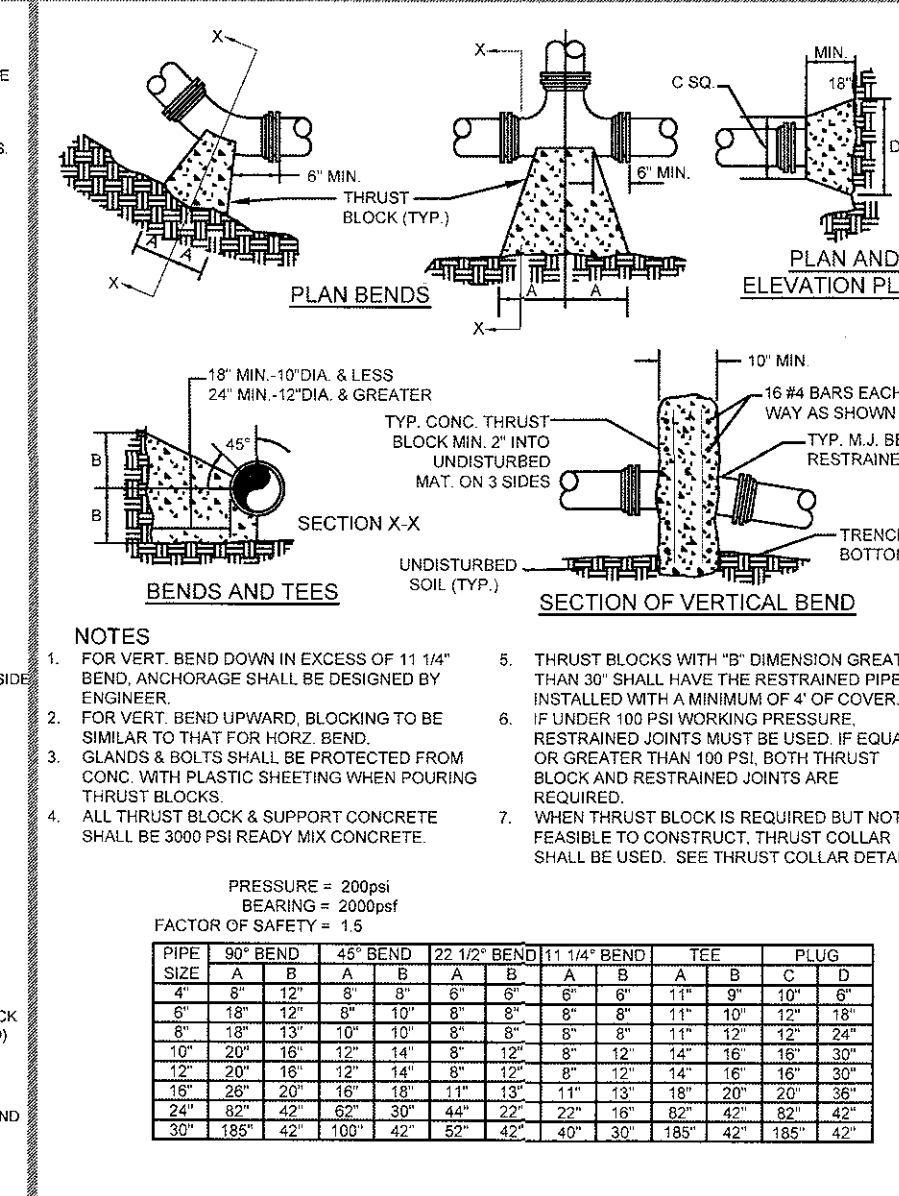
- \_\_\_\_\_



BLACK = GROUND WIRE & GROUND BAR  
TS19-IL-LC-C = TRACE SAFE LOCATING CLIP AT GROUND BAR

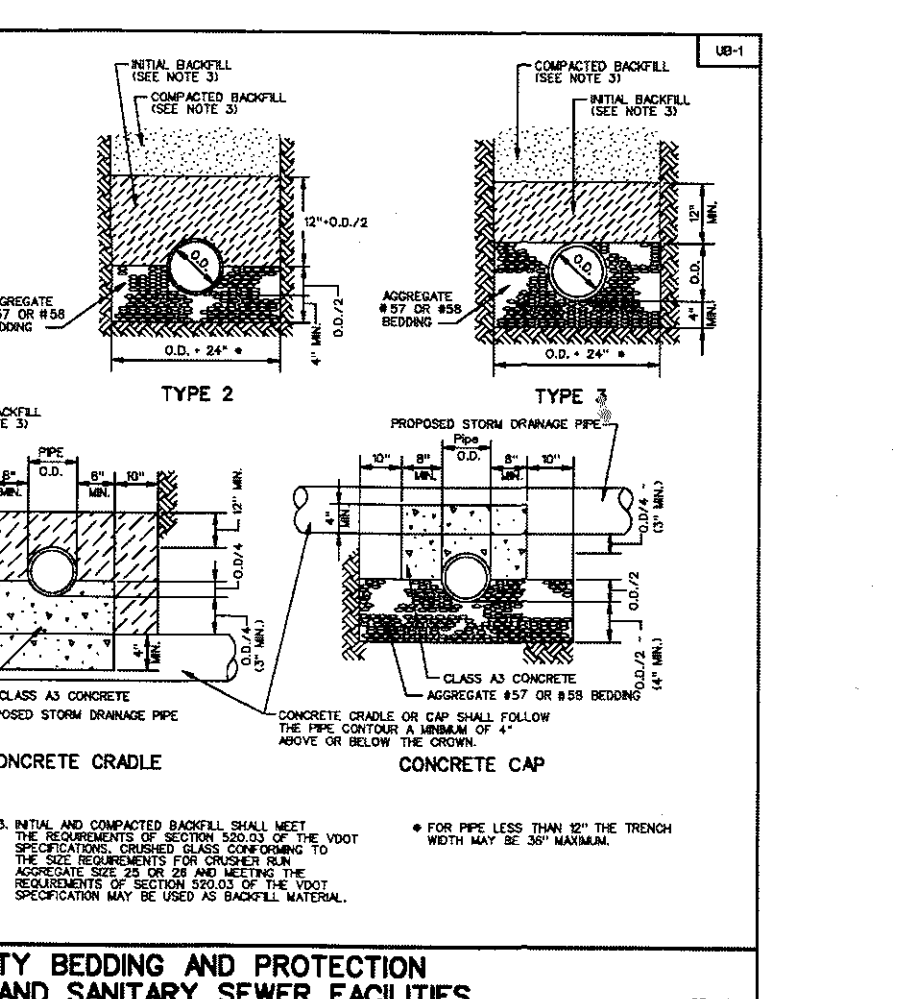
- [illegible]

WU



WESTERN VIRGINIA REGIONAL - CONSTRUC

- 17 THRUST BLOCK REQUIREMENTS



**UTILITY BEDDING AND PROTECTION**  
**WATER AND SANITARY SEWER FACILITIES**

- MINIMUM REGIONAL - CONSTRUCTION DETAIL

---