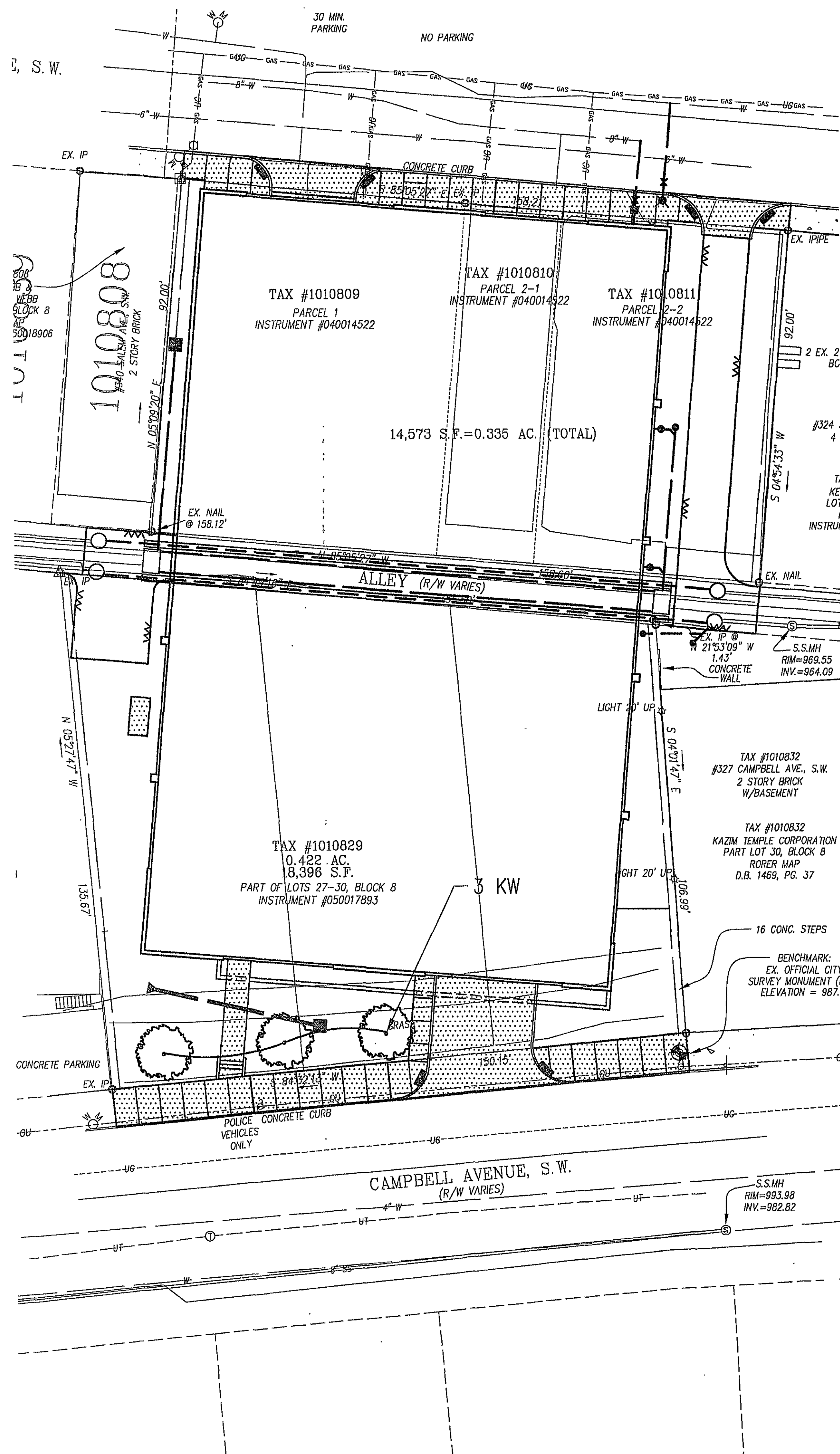


H:\P\2426\CAD\Streets\L101 Landscape Plan.dwg Fri, 15 Jun 2007 11:58am jaw



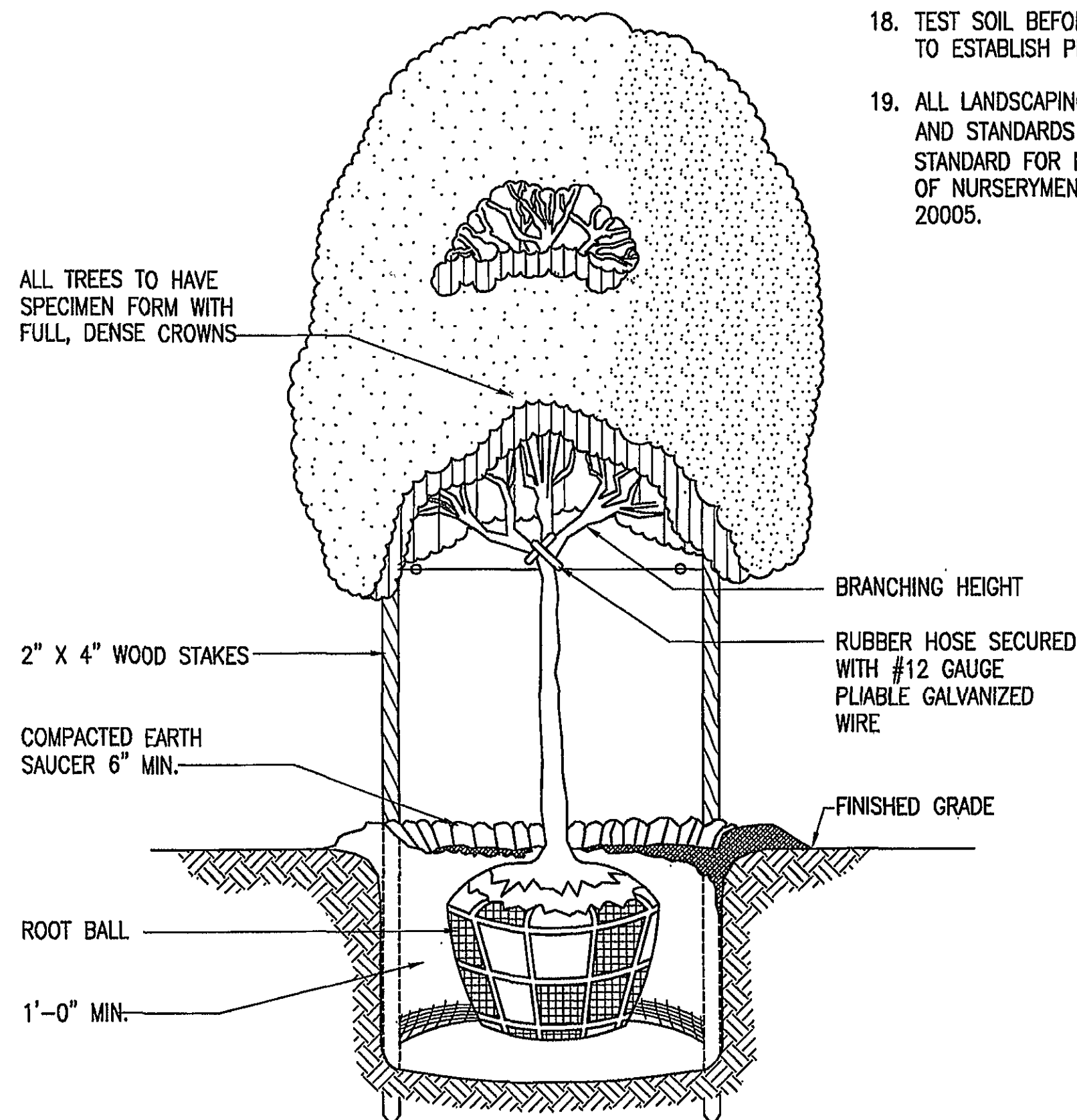
PLANTING SCHEDULE

TREES				SIZE			
QUANTITY	ITEM	SCIENTIFIC NAME	COMMON NAME	HEIGHT	CALIPER	ROOT	COMMENTS
3	KW	PRUNUS SERRULATA 'KWANZAN'	JAPANESE FLOWERING CHERRY	-	2 1/2"-3"	B & B	

PLANTING NOTES:

1. THE CONTRACTOR SHALL VERIFY THAT TOTAL QUANTITIES INDICATED IN THE PLANT LIST OR SCHEDULE AGREES WITH QUANTITIES SHOWN ON PLANTING LAYOUT. IF DISCREPANCIES, THE PLAN SHALL BE USED.
2. THE CONTRACTOR SHALL PROVIDE THE QUANTITIES REQUIRED TO COMPLETE PROPOSED PLANTING AS SHOWN ON THE LANDSCAPE PLAN.
3. CONTRACTOR SHALL ENSURE POSITIVE DRAINAGE.
4. ALL BEDS SHALL BE WEEDED CLEAN UNTIL FINAL ACCEPTANCE.
5. ALL AREAS NOT PAVED OR PLANTED SHALL BE SEEDED.
6. PROVIDE ALL NECESSARY PLANT MATERIALS, LABOR, TOOLS, AND MATERIALS TO COMPLETE THIS PROJECT IN A WORKMANLIKE, PROFESSIONAL MANNER.
7. ALL TREES, SHALL BE SPECIMEN QUALITY (AMERICAN ASSOCIATION OF NURSERYMEN STANDARDS), SHALL BE NURSERY-GROWN, AND IN A HEALTHY, INSECT AND DISEASE-FREE, CONDITION.
8. NO SUBSTITUTIONS OF SIZE OR VARIETY OF PLANT MATERIAL WITHOUT PRIOR APPROVAL OF LANDSCAPE ARCHITECT.
9. STAKE TREES ACCORDING TO A.A.N. (AMERICAN ASSOCIATION OF NURSERYMEN) STANDARDS.
10. "B&B" INDICATES BALLED AND BURLAPPED.
11. ALL TREES AND SHRUBS HAVE BEEN LOCATED WITH RESPECT TO PROPOSED OR EXISTING UTILITIES AS ACCURATELY AS POSSIBLE. FIELD VERIFY LOCATIONS FOR ALL UTILITIES PRIOR TO INSTALLING PLANT MATERIAL.
12. VERIFY ALL DIMENSIONS IN THE FIELD, NOTIFY OWNER AND LANDSCAPE ARCHITECT OF ANY VARIANCE FROM PLANS.
13. PROVIDE OWNER FULL 12 MONTHS MATERIAL AND LABOR GUARANTEE ON ALL PLANT MATERIAL.
14. THOROUGHLY WATER ALL PLANT MATERIAL AFTER PLANTING AND MULCHING. FERTILIZE ALL PLANT MATERIAL AFTER WATERING. APPLY SLOW RELEASE FERTILIZER TO ALL PLANTS PER MANUFACTURER'S DIRECTIONS ON LABEL AT PLANTING.
15. PRUNE ALL PLANT MATERIAL - REMOVE RANK AND DEAD GROWTH ONLY. PRUNE FOR NATURAL SHAPE PER SPECIES.
16. MULCH TO BE 3" MIN. DEPTH FINE SHREDDED HARDWOOD BARK MULCH IN ALL BED AREAS.
17. TREE AND SHRUB PITS SHALL BE 3 TIMES SIZE OF ROOT BALL AND BACKFILLED WITH SOIL MIXTURE.
18. TEST SOIL BEFORE PLANTING AND ADD PROPER SOIL AMENDMENTS TO SOIL TO ESTABLISH PH OF 6.5.
19. ALL LANDSCAPING MATERIALS SHALL EXCEED THE MINIMUM SPECIFICATIONS AND STANDARDS DESCRIBED IN THE LATEST ADDITION OF THE 'AMERICAN STANDARD FOR NURSERY STOCK', PUBLISHED BY THE AMERICAN ASSOCIATION OF NURSERYMEN, 1250 I STREET, N.W. SUITE 500, WASHINGTON, D.C. 20005.

ALL TREES TO HAVE SPECIMEN FORM WITH FULL, DENSE CROWNS



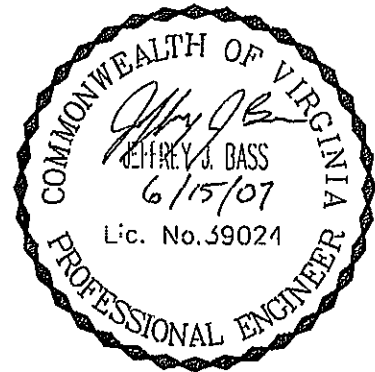
TREE PLANTING DETAIL
NO SCALE

GRAPHIC SCALE(S)



CLARK NEXSEN
Architecture & Engineering

6160 KEMPSVILLE CIRCLE
NORFOLK, VIRGINIA 23502
757-455-5800 FAX 757-455-5638
WWW.CLARKNEXSEN.COM



DESMAN
ASSOCIATES
A DIVISION OF DESMAN, INC.
NEW YORK CHICAGO WASHINGTON, D.C. HARTFORD BOSTON CLEVELAND LAS VEGAS

Donley's
Design/Build • General Contracting
Construction Management

CAMPBELL AVENUE
PARKING DECK
ROANOKE, VIRGINIA

CN NO: 2426.2
DATE: 6/15/07
DESIGN: TITLE SHEET
DRAWN: -
REVIEW: -
REVISIONS
No. Date Description By

LANDSCAPE
PLAN

LA101
SHEET 11 OF 11