

#### GENERAL UTILITY NOTES:

- PROPOSED UTILITIES SHALL BE UNDERGROUND, BUILDING WILL NOT HAVE A FIRE ALARM AND NO SPRINKLER SYSTEM, WILL USE EXISTING FIRE HYDRANT.
- CONTRACTOR SHALL CONSTRUCT ALL UTILITIES AS PER THE CITY OF ROANOKE AND WYVA STANDARDS AND SPECIFICATIONS (LATEST EDITION).
- RPZ SPECIFICATIONS: (REFER TO DETAIL SHEET FOR DETAILS)  
2" RPZ: WATTS MODEL NUMBER: 009 M2 QT  
SIZE: 21-3/8" X 7-3/4" X 4-1/2"
- ENCLOSURE: WATTSROCK INSULATED ENCLOSURE  
MODEL NUMBER: WPHR-2, 90Watt HEATER  
SIZE: 43" X 12" X 27"  
PAD SIZE: 56" X 22" X 6"
- DOMESTIC WATER CALCULATIONS:  
40 GPM PEAK DOMESTIC DEMAND (SITE RECYCLES WATER)  
USE 1-1/2" METER ON 2" LINE  
FIRE FLOW= 2,000 GPM REQ'D, AVAILABLE=3,882GPM AT 20PSI  
EXISTING 16" WATER MAIN PRESSURE=120 PSI, CONTRACTOR TO INSTALL A PRV.  
WATER SERVICE SHALL BE CONSTRUCTED PER: WYVA DETAIL W-5, SETTER SHALL BE AN EQUIVALENT TO A.A.Y.MCDONALD MODEL#50B618WDF 665, S-BAR SETTER WITH PRV INSTALLED BEFORE METER.
- SANITARY SEWER SHALL BE PVC SCH 40 UNLESS OTHERWISE NOTED, CONTRACTOR SHALL INSTALL WARNING TAPE AND LOCATION WIRE ABOVE WITH SANITARY SEWER SERVICE LINES.
- MAINTAIN 3' MINIMUM DEPTH OF COVER FOR ALL SANITARY SEWER AND WATER LINES.
- CONTRACTOR TO MAINTAIN MINIMUM OF 5' HORIZONTAL SEPARATION BETWEEN WATER AND SEWER LATERALS. MAINTAIN MINIMUM OF 18" VERTICAL CLEARANCE SEPARATION BETWEEN SERVICE LATERALS AND STORM DRAINAGE PIPES.
- CONTRACTOR TO COORDINATE WITH HVAC CONTRACTOR ON DETAILS AND LOCATION OF HVAC EQUIPMENT PADS PRIOR TO CONSTRUCTION.
- REFER TO LATEST ARCHITECTURAL PLANS FOR EXACT BUILDING, PLUMBING, DOWNSPOUT, AND UTILITY LOCATIONS.
- CONTRACTOR SHALL VERIFY INVERT OF SANITARY SEWER CLEANOUT AND PROPERTYLINE ONCE THE CLEANOUT HAS BEEN SET AND NOTIFY ENGINEER IF INVERT IS DIFFERENT THAN ELEVATION SHOWN ON PLANS.
- THE CITY OF ROANOKE DOES NOT REVIEW OR APPROVE SPECIFIC MAKES OR MODELS OF ENCLOSURES. ALL ENCLOSURES SHALL BE ASSE 1060 APPROVED, AND SHALL BE SIZED TO ACCOMMODATE ANY REQUISITE RPZ OR RPDA, AS WELL AS THE REQUIRED ALLOWANCES AROUND SAID BACKFLOW PREVENTION ASSEMBLY, IN ACCORDANCE WITH THE WYVA MANUAL OF SPECIFICATIONS

#### GENERAL WATER NOTES:

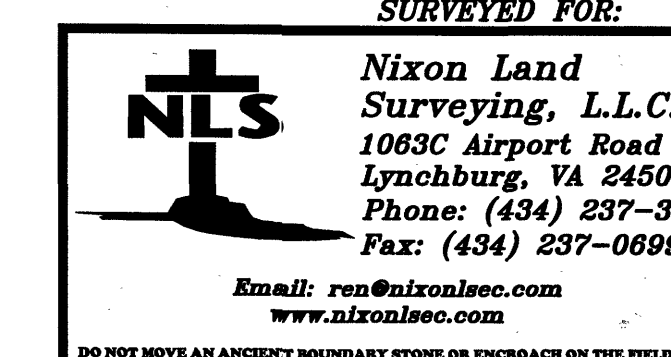
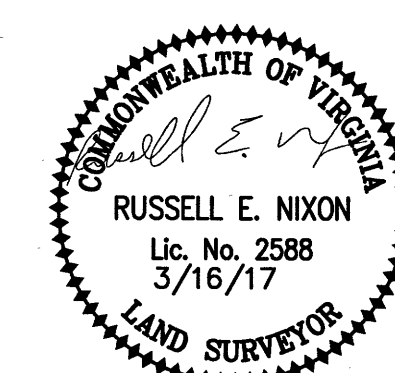
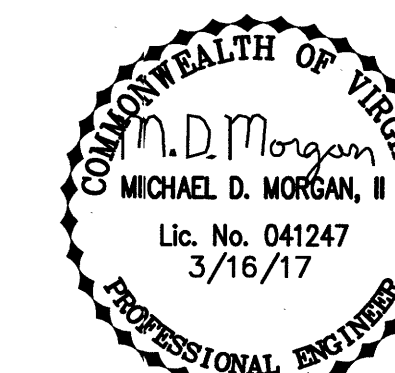
- EXCAVATION AND SHORING TO BE PROVIDED BY CONTRACTOR PER OSHA STANDARDS AT LOCATIONS FOR ALL TAPS TO BE PERFORMED BY WYVA.
- CONTRACTOR SHALL COORDINATE WATER OUTAGE, AND ALL CONNECTIONS TO EXISTING SYSTEM WITH WYVA.
- CONTRACTOR SHALL ABANDON THE EXISTING WATER SERVICE AT THE MAIN.
- CONTRACTOR SHALL SUPPLY ALL MATERIALS AND EXCAVATE TO EXPOSE MAIN, WYVA WILL MAKE THE ACTUAL 2" TAP CONNECTION TO THE MAIN.

#### GENERAL NOTES:

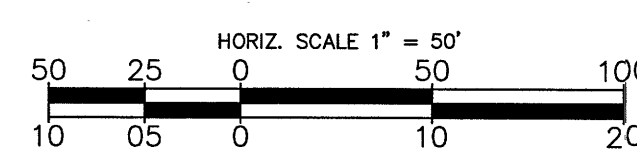
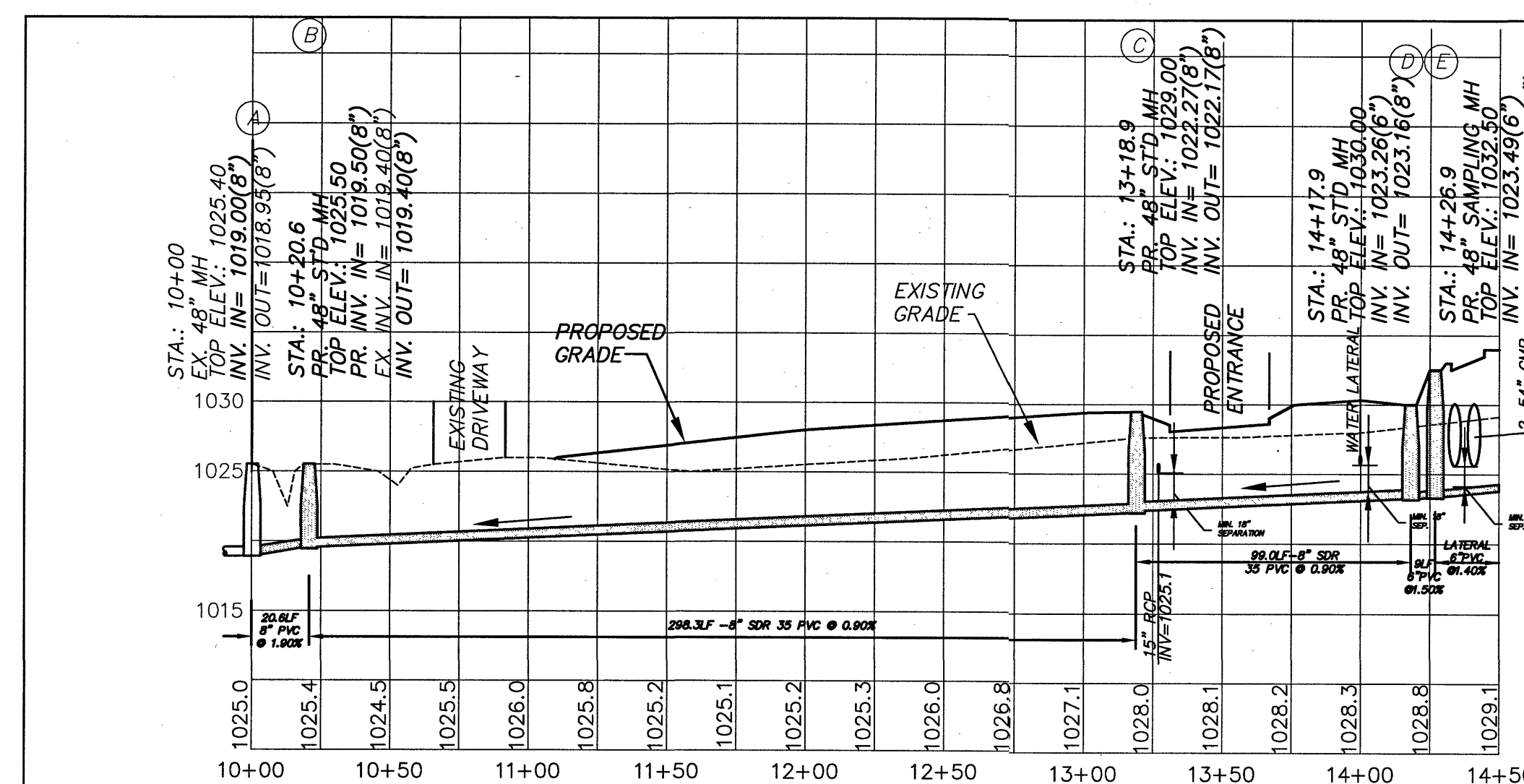
- ALL CONSTRUCTION METHODS AND MATERIALS SHALL CONFORM TO THE LATEST WESTERN VIRGINIA WATER AUTHORITY (WYVA) DESIGN AND CONSTRUCTION STANDARDS.
- THE CONTRACTOR IS REQUIRED TO NOTIFY THE WYVA IN WRITING AT LEAST THREE (3) DAYS PRIOR TO ANY CONSTRUCTION. CONTACT MARK SINK AT 540-537-3460.
- ALL WORK SHALL BE SUBJECT TO INSPECTION BY THE WYVA.
- FIELD CORRECTIONS SHALL BE APPROVED BY THE WYVA PRIOR TO SUCH CONSTRUCTION.
- ANY EXISTING APPURTENANCES SHALL BE ADJUSTED TO GRADE AND NEW FRAME AND COVERS INSTALLED WHERE REQUIRED.
- IT IS THE CONTRACTOR'S RESPONSIBILITY TO HAVE ALL EXISTING UTILITIES LOCATED AND POTHOLED TO VERIFY LOCATIONS. THIS PLAN REVIEW DOES NOT REMOVE THE CONTRACTOR'S RESPONSIBILITY TO RELOCATE ANY EXISTING CONFLICTS FOUND DURING CONSTRUCTION.
- MAINTAIN 18" OF VERTICAL SEPARATION BETWEEN STORM SEWER LINES, WATER LINES AND THE SANITARY SEWER LINES.
- CONTRACTOR TO NOTIFY ENGINEER OF ANY DISCREPANCIES BETWEEN PLANS AND ACTUAL FIELD ELEVATIONS.
- MAINTAIN 3' OF COVER AS A MINIMUM.
- ALL SEWER SERVICE LATERALS TO BE 4" MINIMUM.
- 8" MAIN UNDER PAVEMENT TO BE BEDDED AND BACKFILLED WITH COMPACTED STONE TO 1FT. OVER PIPE.
- ALL SEWER MAINS 10FT. DEEP OR SHALLOWER SHALL BE SDR 35 PVC. ALL SEWER MAINS DEEPER THAN 10FT. SHALL BE SDR 26 PVC.
- THE WYVA REQUIRED GRIT CHAMBER AND OIL/WATER SEPARATOR FOR SANITARY SEWER CONNECTION FOR PROPOSED BUILDING WILL BE SHOWN ON MEP PLANS. THIS PLAN WILL BE REVIEWED AS PART OF THE MEP BY THE CITY OF ROANOKE AND WILL BE INSTALLED IN ACCORDANCE TO THE CITY OF ROANOKE STANDARDS FOR PROPOSED STRUCTURE. WYVA WILL REVIEW INSTALLATION AND FUNCTION PRIOR TO ISSUANCE OF SUBSTANTIAL COMPLETION.

#### PUBLIC SANITARY SEWER STRUCTURE SCHEDULE (WYVA)

- EX. 48" SANITARY MH  
TOP ELEV.: 1025.40  
PR. INV IN= 1019.00(8")  
EX. INV OUT= 1018.95(8")
- PROPOSED 48" MH  
TOP ELEV.: 1025.50  
PR. INV IN= 1019.50(8")  
EX. INV IN= 1019.40(8")  
PR. INV OUT= 1019.40(8")
- PROPOSED 48" MH  
TOP ELEV.: 1029.00  
INV IN= 1022.27(8")  
INV OUT= 1022.17(8")
- PROPOSED 48" MH  
TOP ELEV.: 1030.00  
INV IN= 1023.26(6")  
INV OUT= 1023.16(6")
- PROPOSED 48" SAMPLING MH  
TOP ELEV.: 1032.50  
INV IN= 1023.49(6")  
INV OUT= 1023.39(6")



SURVEYED FOR:		VIAMAC, LLC	
Nixon Land Surveying, L.L.C.		UTILITY PLAN	
1083C Airport Road		FOR	
Lynchburg, VA 24502		3675 & 3765 ORANGE AVENUE	
Phone: (434) 237-3800		CAR WASH	
Fax: (434) 237-0899		CITY OF ROANOKE, VIRGINIA	
Email: ron@nixonland.com		COMM. NO.: 20111158	
WWW.NIXONLAND.COM		REVISED: 3/16/17	
DO NOT MOVE AN ANCESTRY BOUNDARY STONE OR ENCROACH ON THE FIELD OF THE PATENTED, PROTECTED SURVEY (CIV)		SCALE: 1"=30' DR. BY: MDM DATE: 11/21/16	
		SHEET: 11 OF 19 CHK. BY: MDM/DRY. NME SITE-R4	



8" Diameter sdr-35  
Main Holes = CP+P 48"

As-built - 1/12/18  
Inspector: Joey Carter