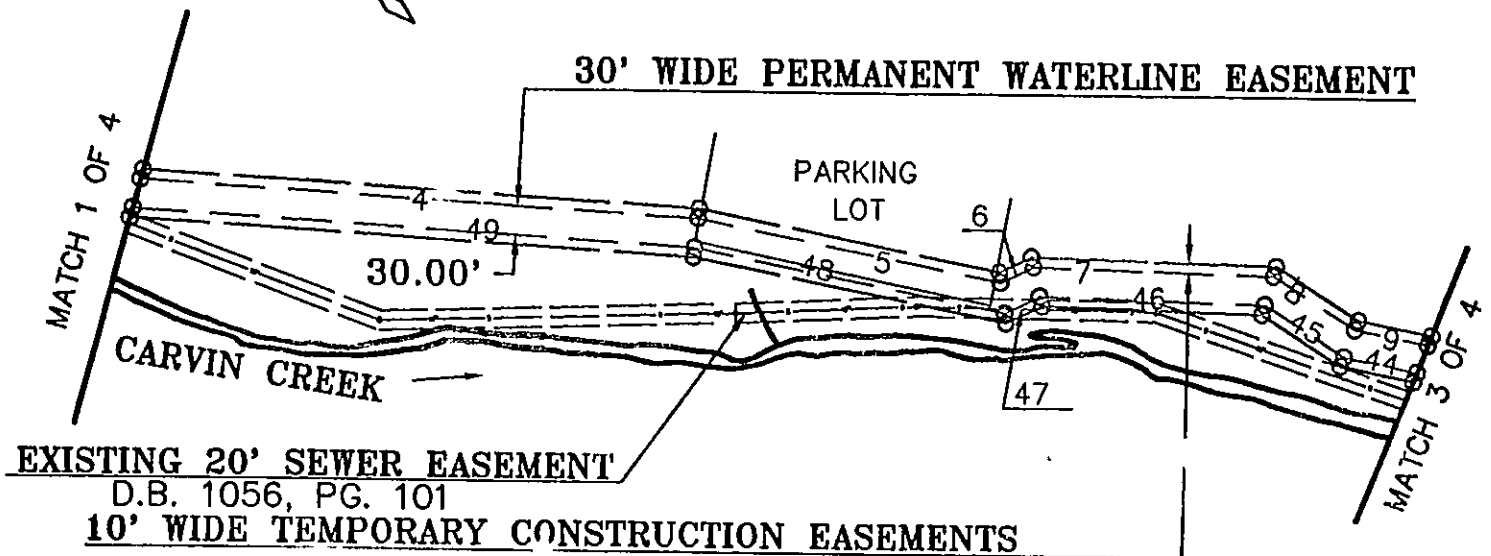


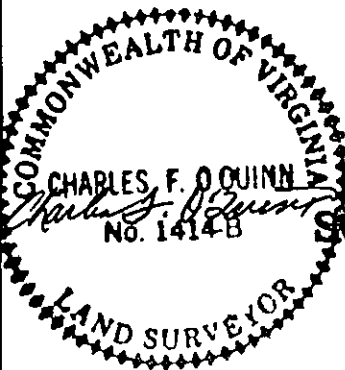
VA SOUTH ZONE

HOLLINS COLLEGE
TAX MAP NO. 27.00-01-01

PERM. ESMT. = 137,712 SQ. FT.
TEMP. ESMT. = 91,370 SQ. FT.



PLAT SHOWING
10' WIDE TEMPORARY CONSTRUCTION EASEMENTS
AND
30' WIDE PERMANENT WATER LINE EASEMENT
FOR THE
CITY OF ROANOKE, VIRGINIA
LOCATED IN THE
HOLLINS MAGISTERIAL DISTRICT
ROANOKE COUNTY, VIRGINIA
SCALE: 1"=200' DATE: 11/17/92

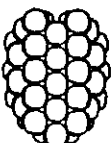


NOTES:

- 1) NO TITLE REPORT FURNISHED.
- 2) I.P.F.= IRON PIN FOUND
- 3) THIS PLAT BASED ON CURRENT FIELD SURVEYS
- 4) SEE CARVINS COVE WATER PROJECT PHASE II, CONTRACT A, SHEETS 3,4,5,6
- 5) PROPERTY DELINEATED ON ROANOKE CO. TAX MAPS #18.19 & 27.00.

SEE SHEET 4 OF 4 FOR BEARINGS & DISTANCES

Dewberry & Davis



626 SOUTH MAIN STREET
MARION, VA. 24354
703-783-7271

ENGINEERS
ARCHITECTS
PLANNERS
SURVEYORS

APPROVED BY:

Charles M. Sullivan
CITY ENGINEER

DATE 11/5/93

2 OF 4

PLAN NO. 6252-A2