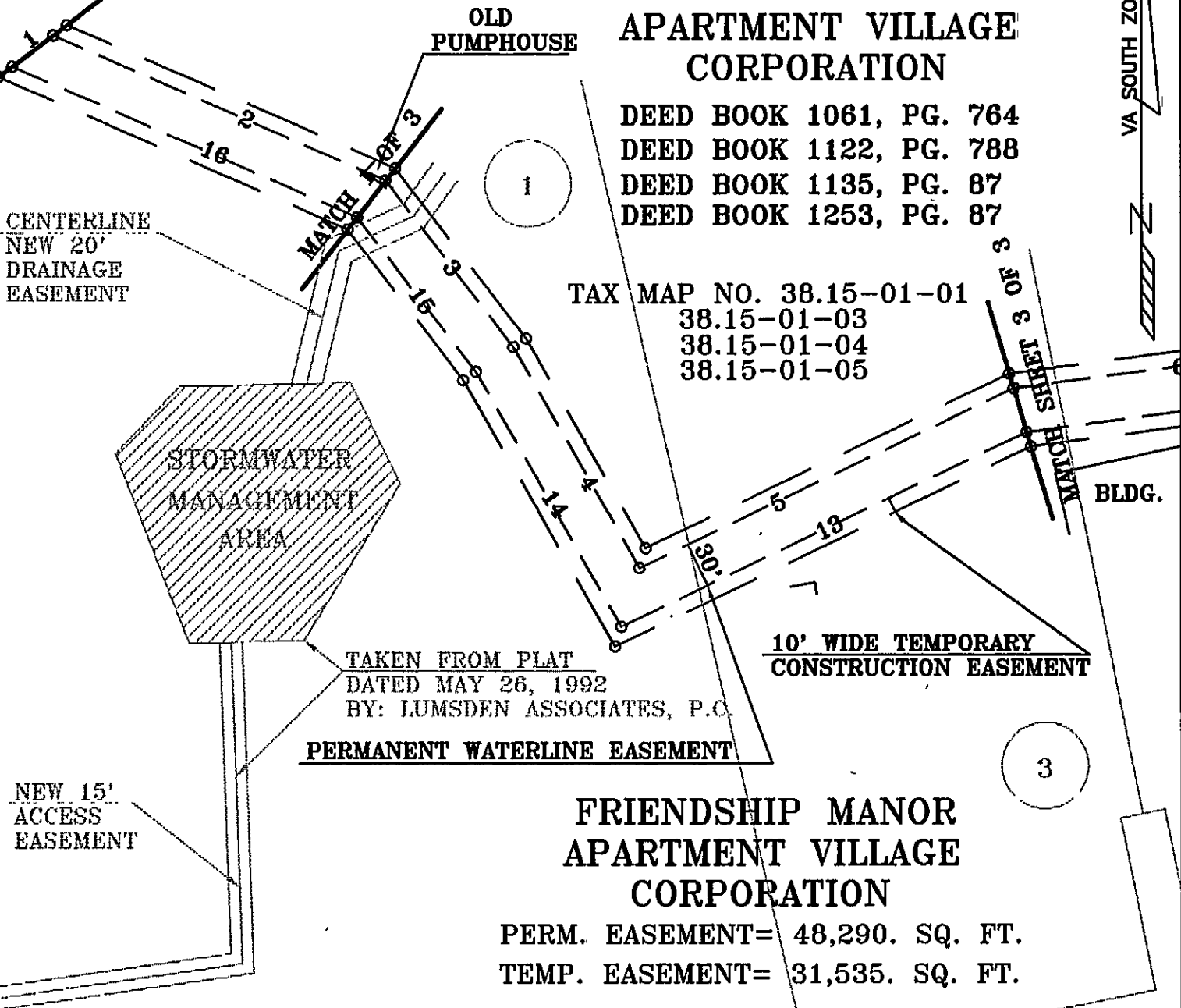


FRIENDSHIP MANOR
APARTMENT VILLAGE
CORPORATION

DEED BOOK 1061, PG. 764
DEED BOOK 1122, PG. 788
DEED BOOK 1135, PG. 87
DEED BOOK 1253, PG. 87

TAX MAP NO. 38.15-01-01
38.15-01-03
38.15-01-04
38.15-01-05



FRIENDSHIP MANOR
APARTMENT VILLAGE
CORPORATION

PERM. EASEMENT= 48,290. SQ. FT.
TEMP. EASEMENT= 31,535. SQ. FT.

PLAT SHOWING
TEMPORARY CONSTRUCTION EASEMENTS
AND

30' WIDE PERMANENT WATER LINE EASEMENTS
FOR THE
CITY OF ROANOKE, VIRGINIA
LOCATED IN THE
HOLLINS MAGISTERIAL DISTRICT
ROANOKE COUNTY, VIRGINIA

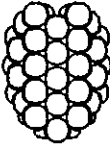
NOTES:

SCALE: 1" = 100' DATE: 2/3/93

REVISED 3/2/93

- 1) NO TITLE REPORT FURNISHED.
- 2) I.P.F.= IRON PIN FOUND
- 3) THIS PLAT BASED ON CURRENT FIELD SURVEYS
- 4) SEE CARVINS COVE WATER PROJECT PHASE II, CONTRACT B, SHEETS 4,5.
- 5) PROPERTY DELINEATED ON ROANOKE CO. TAX MAP #38.15.
- 6) SEE SHEET 3 OF 3 FOR BEARINGS & DISTANCES

Dewberry & Davis



626 SOUTH MAIN STREET
MARION, VA. 24354
703-783-7271

ENGINEERS
ARCHITECTS
PLANNERS
SURVEYORS

APPROVED BY:

Charles M. Huffing
CITY ENGINEER

DATE 11/11/93

2 OF 3

PLAN NO. 6252-EE2