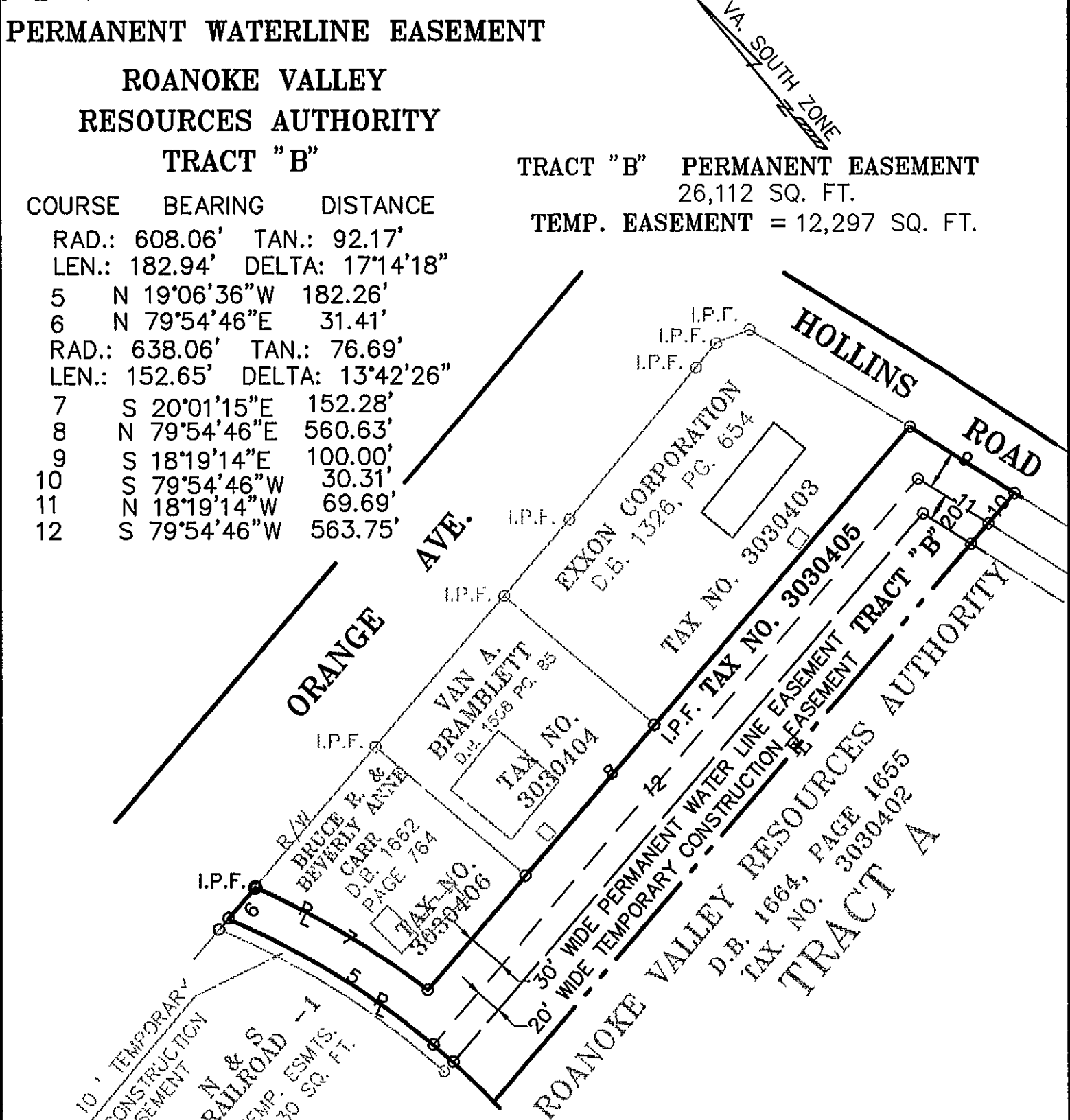


PERMANENT WATERLINE EASEMENT

ROANOKE VALLEY
RESOURCES AUTHORITY
TRACT "B"

COURSE	BEARING	DISTANCE
RAD.:	608.06'	TAN.: 92.17'
LEN.:	182.94'	DELTA: 17'14'18"
5	N 19°06'36"W	182.26'
6	N 79°54'46"E	31.41'
RAD.:	638.06'	TAN.: 76.69'
LEN.:	152.65'	DELTA: 13°42'26"
7	S 20°01'15"E	152.28'
8	N 79°54'46"E	560.63'
9	S 18°19'14"E	100.00'
10	S 79°54'46"W	30.31'
11	N 18°19'14"W	69.69'
12	S 79°54'46"W	563.75'

TRACT "B" PERMANENT EASEMENT
26,112 SQ. FT.
TEMP. EASEMENT = 12,297 SQ. FT.



PLAT SHOWING
TEMPORARY CONSTRUCTION EASEMENTS
AND
PERMANENT WATER LINE EASEMENTS
FOR THE
CITY OF ROANOKE, VIRGINIA
LOCATED IN THE
CITY OF ROANOKE, VIRGINIA

NOTES:

- 1) NO TITLE REPORT FURNISHED.
- 2) I.P.F.= IRON PIN FOUND
- 3) THIS PLAT BASED ON CURRENT FIELD SURVEYS
- 4) SEE CARVINS COVE WATER PROJECT PHASE II, CONTRACT C1, SHEETS 1,2,3
- 5) PROPERTY DELINEATED ON CITY OF ROANOKE TAX MAPS # 303 & 305
- 6) STRUCTURES SHOWN TAKEN FROM AERIAL TOPOGRAPHY PROVIDED BY THE CITY OF ROANOKE.

SCALE: 1"=100' DATE: 12/02/92
REVISED DATE: 2/20/93

Dewberry & Davis

626 SOUTH MAIN STREET
MARION, VA. 24354
703-783-7271

ENGINEERS
ARCHITECTS
PLANNERS
SURVEYORS

APPROVED BY:
Charles M. Huffer
CITY ENGINEER

DATE 11/11/93

PLAN NO. 6252-2