

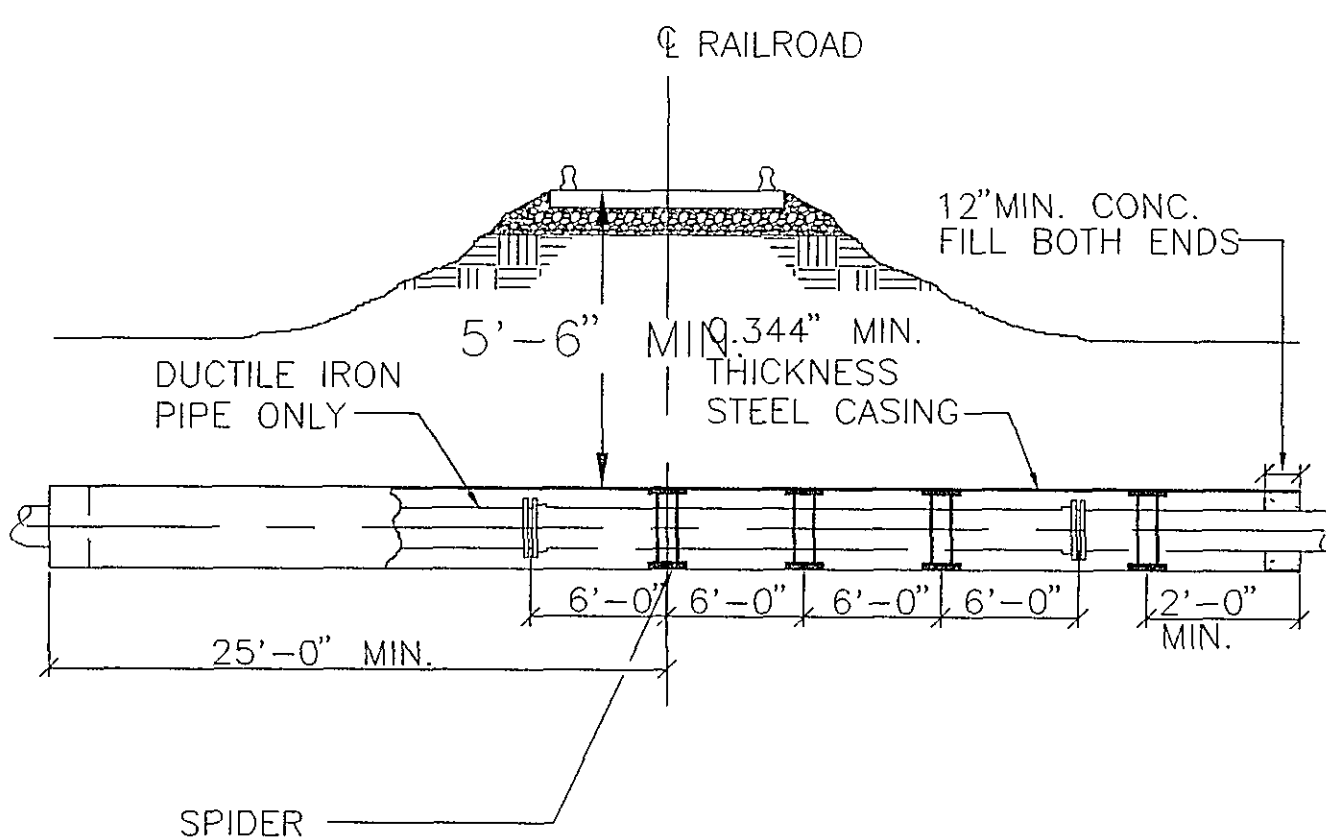
NOTE:

STEEL CASING TO EXTEND TO BACK OF CURB OR MIN. 3'-0" BEYOND EDGE OF PAVEMENT

ALL JOINTS IN CASING PIPES SHALL HAVE RESTRAINED JOINTS

**TYPICAL STEEL SLEEVE
INSTALLATION UNDER ROADWAY**

NTS



NOTE :

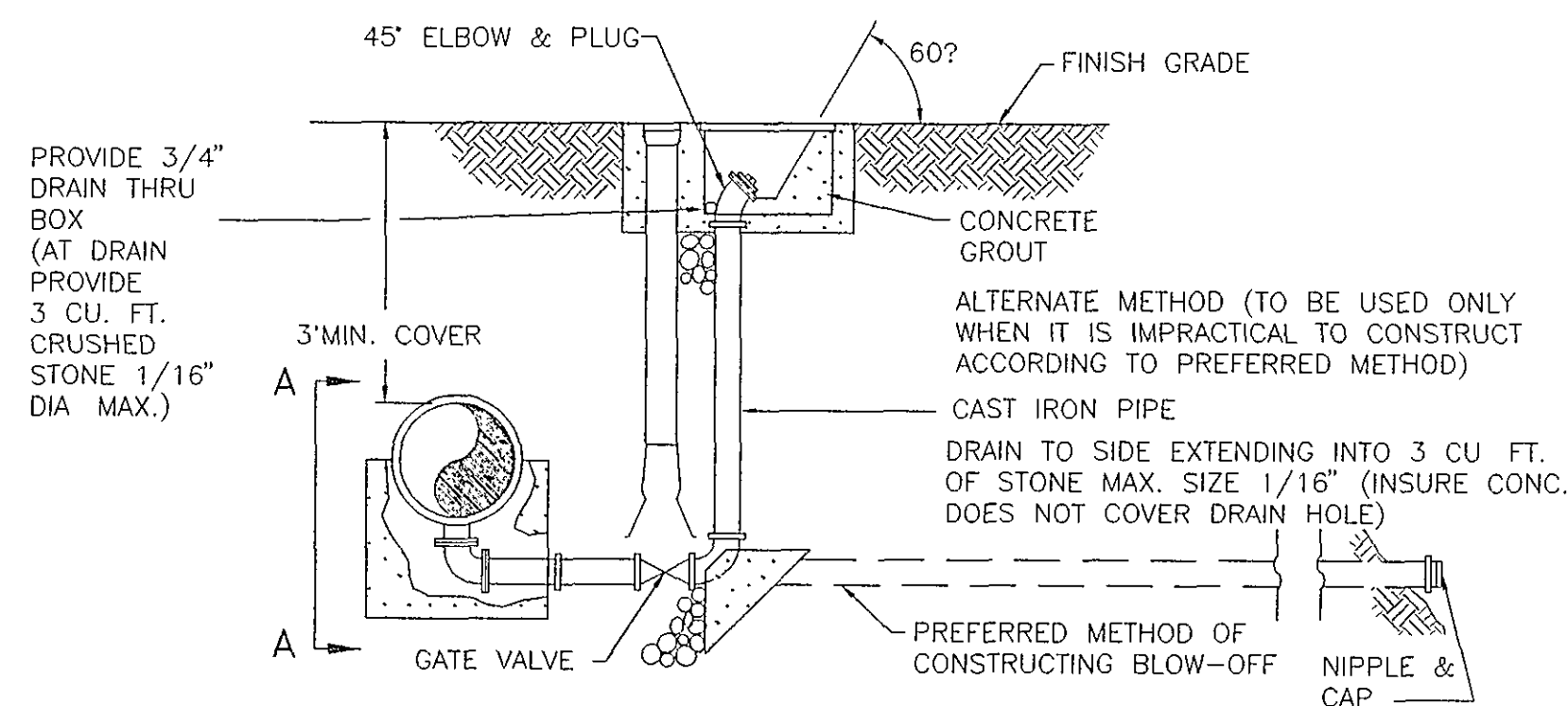
ALL JOINTS IN CASING PIPES SHALL HAVE RESTRAINED JOINTS

**TYPICAL STEEL SLEEVE
INSTALLATION UNDER RAILROAD**

NTS

BLOW-OFF VALVE CHART

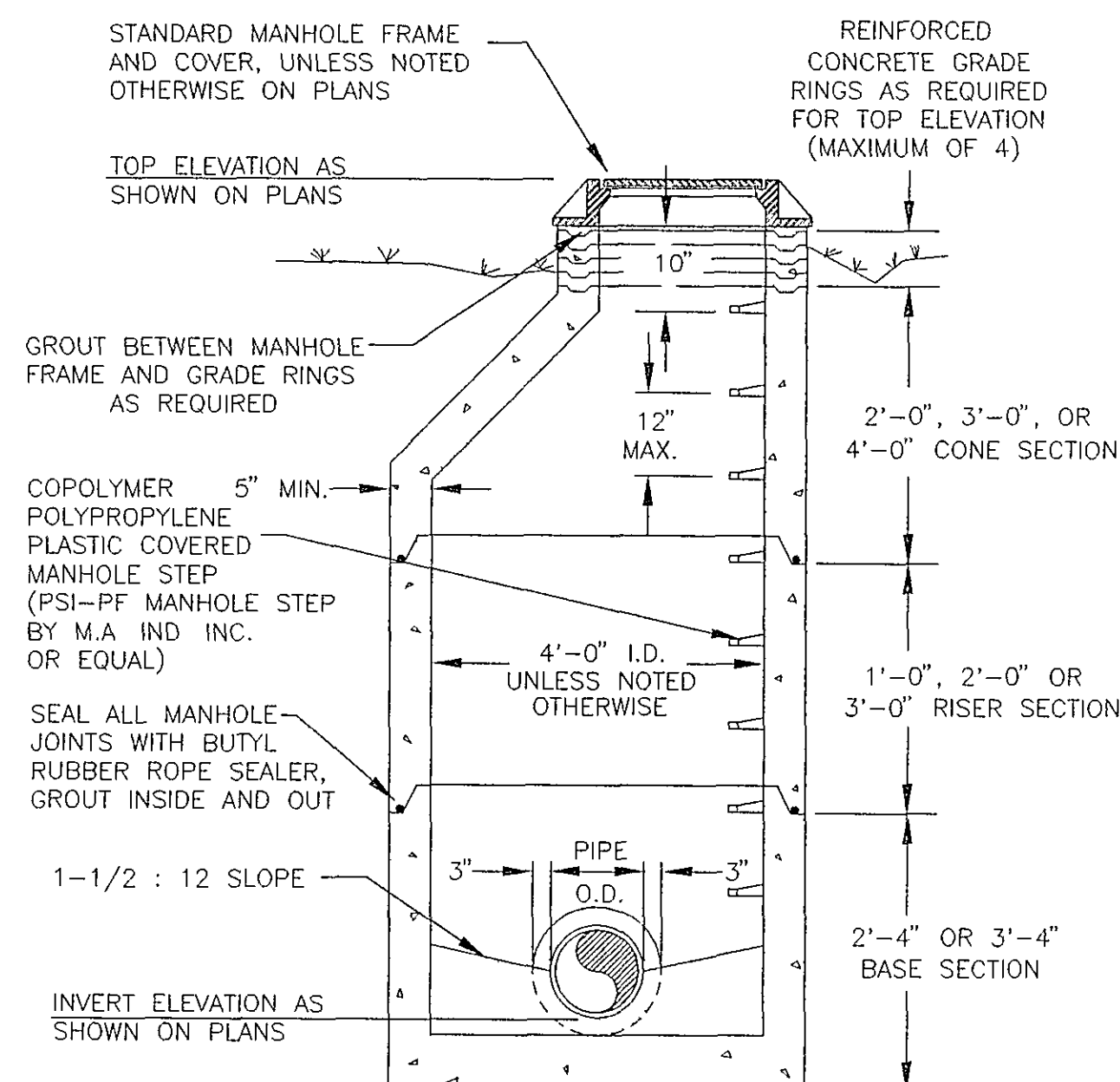
PIPE SIZE	VALVE SIZE
30" - 36"	8"
16" - 24"	6"
6" - 12"	4"



VIEW A-A

BLOW-OFF DETAIL

NTS

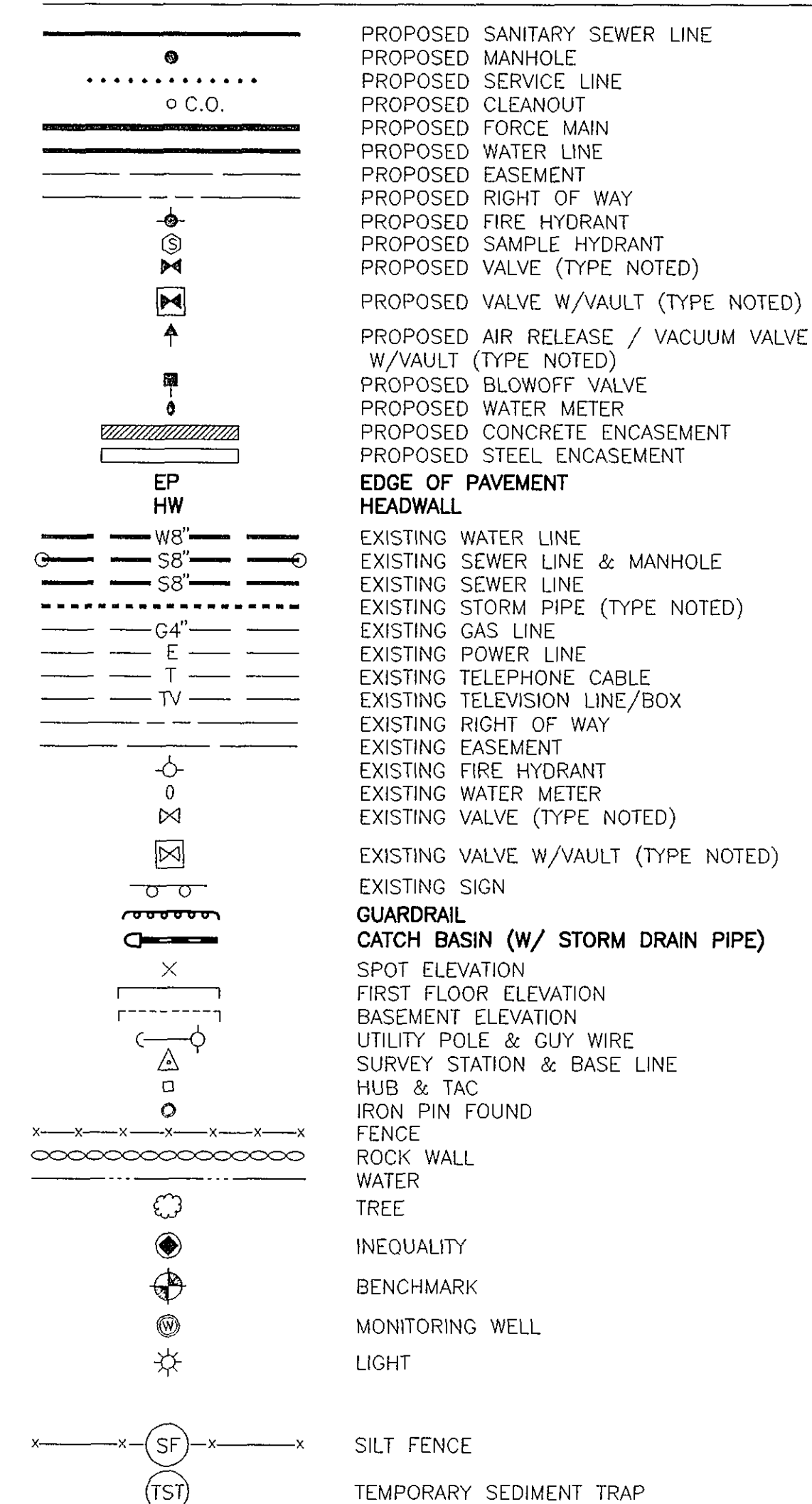


NOTE - MINIMUM REINFORCING SHALL BE 0.12 SQ. INCHES PER LINEAR FOOT IN EACH DIRECTION

**STANDARD PRECAST MANHOLE
with MONOLITHIC BASE**

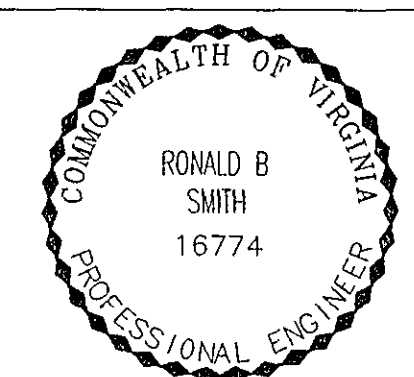
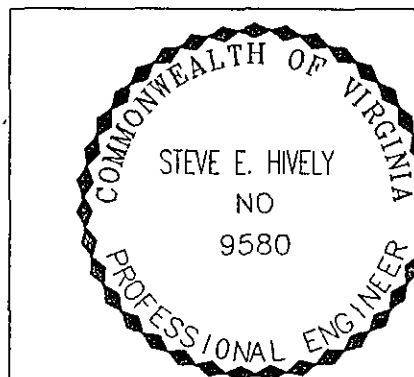
NTS

LEGEND



AS BUILT

WATER DEP'T. #93-25



ENGINEER'S SEAL

ENGINEER'S SEAL

Architects
Engineers
Planners
Surveyors

Dewberry & Davis

5238 Valleypointe Parkway, Suite One-B
Roanoke, Virginia 24019
703 362-7725

Carvins Cove, Phase II
City of Roanoke
Roanoke, Virginia

**CONTRACT "C2"
DETAILS
SOIL/EROSION CONTROL
LEGEND**

Drawn By ACF
Designed By RBS
Checked By SEH

Date
MARCH 93

Scale
AS SHOWN

Plan Number
C2DTRWL3

Zoned
NONE

Sheet
25 of 25

File Number
C1160