

KENNEDY		
COURSE	BEARING	DISTANCE
8	S 87°53'49"W	111.89'
9	N 82°33'03"W	95.33'
10	N 05°10'13"E	32.14'
11	S 79°58'34"E	175.54'
12	N 74°12'19"E	30.59'
1	S 03°39'05"E	18.07'

FENCE LOCATION BY AERIAL TOPOGRAPHY

APPALACHIAN
ELECTRIC POWER
COMPANY

TAX MAP NO. 4250101
4250102

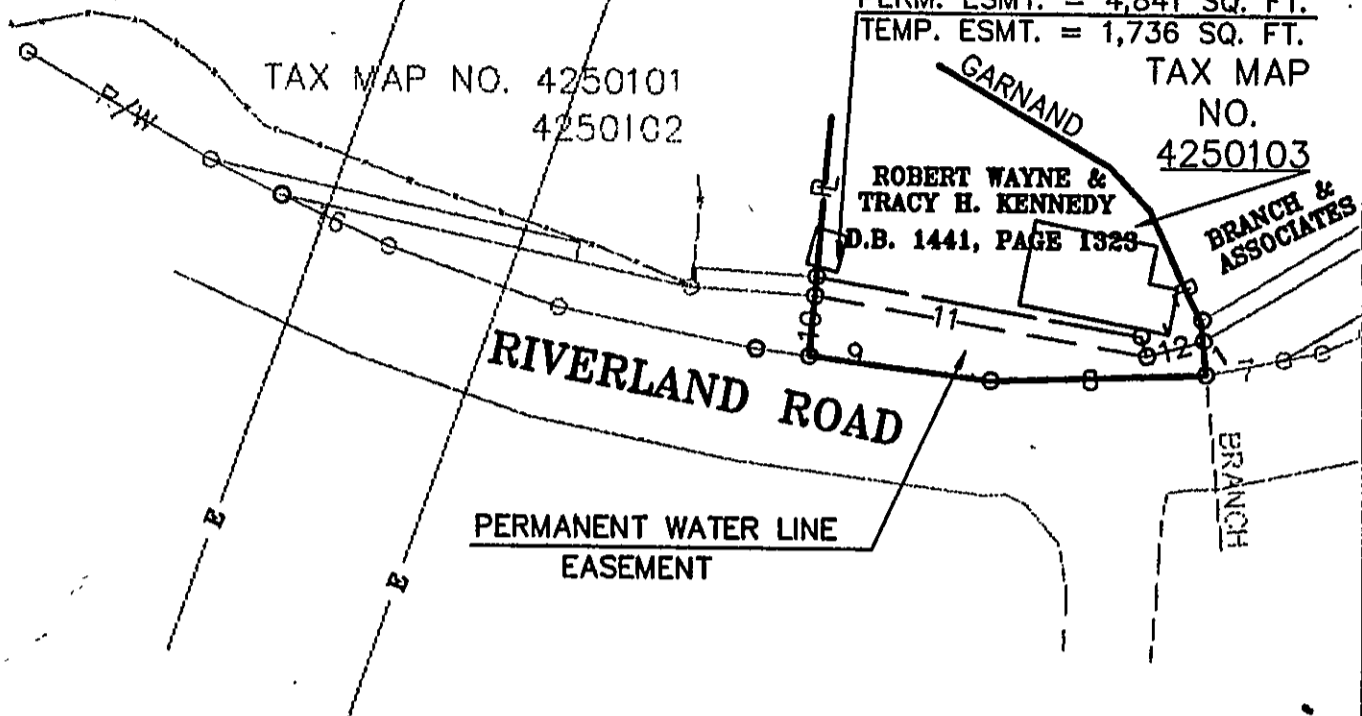
PERM. ESMT. = 4,841 SQ. FT.
TEMP. ESMT. = 1,736 SQ. FT.

TAX MAP
NO.
4250103

ROBERT WAYNE &
TRACY H. KENNEDY
D.B. 1441, PAGE 1323

BRANCH &
ASSOCIATES

VA SOUTH ZONE



**PLAT SHOWING
TEMPORARY CONSTRUCTION EASEMENTS
AND
PERMANENT WATER LINE EASEMENTS
FOR THE
CITY OF ROANOKE, VIRGINIA
LOCATED IN THE
CITY OF ROANOKE
ROANOKE COUNTY, VIRGINIA**

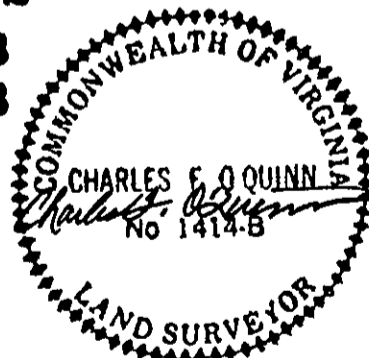
SCALE: 1"=100' DATE: 11/17/92

REVISED DATE: 2/10/93

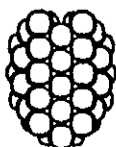
REVISED DATE: 7/16/93

NOTES:

- 1) NO TITLE REPORT FURNISHED.
- 2) I.P.F.= IRON PIN FOUND
- 3) THIS PLAT BASED ON CURRENT FIELD SURVEYS
- 4) SEE CARVINS COVE WATER PROJECT PHASE II, CONTRACT C2, SHEETS 5,6
- 5) PROPERTY DELINEATED ON CITY OF ROANOKE TAX MAP #425
- 6) STRUCTURES SHOWN TAKEN FROM AERIAL TOPOGRAPHY PROVIDED BY THE CITY OF ROANOKE
- 7) -E- OVERHEAD ELECTRICAL



Dewberry & Davis



626 SOUTH MAIN STREET
MARION, VA. 24354
703-783-7271

ENGINEERS
ARCHITECTS
PLANNERS
SURVEYORS

APPROVED BY:

Charles M. Duffin
CITY ENGINEER

DATE 11/5/93

PLAN NO. 6252-HH