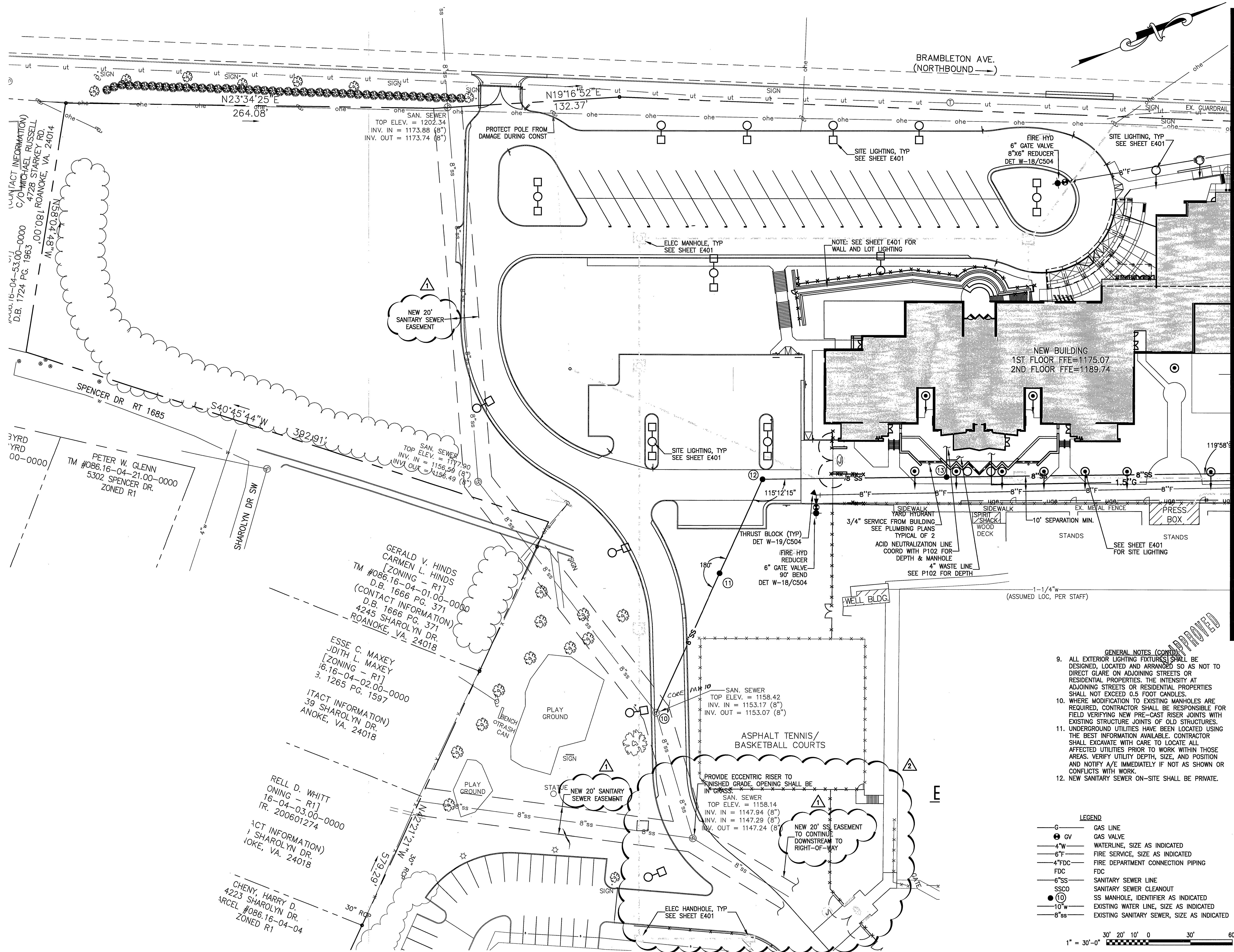


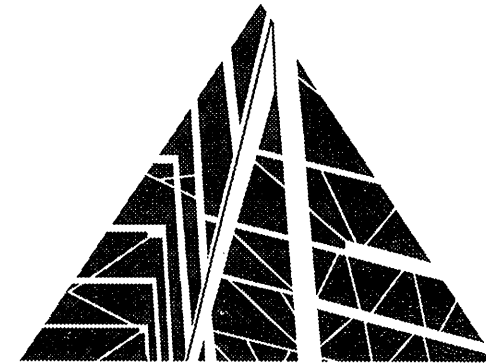
J:\10006\Civil\DWG\10006 Cbas.dwg, Plotted By: Inferrary, Plotted: Aug 11, 2011 - 2:34pm



KEY PLAN

GENERAL NOTES

- CONTRACTOR TO CONFIRM LOCATION & INVERTS PRIOR TO INSTALLATION OF NEW SERVICE LINES.
- CONTRACTOR TO CONTACT THE WESTERN VIRGINIA WATER AUTHORITY (853-5700) PRIOR TO EXTENDING WATER & SEWER SERVICE LINES AND TO COORDINATE THE CONNECTION TO THE EXISTING WATER AND SEWER MAINS. WORK IS TO CONFORM TO WVA STANDARDS.
- CONTRACTOR SHALL COORDINATE ELECTRICAL WORK WITH AMERICAN ELECTRIC POWER CO.
- CLEAN-OUTS IN PAVEMENT OR SIDEWALK SHALL BE SET IN 6" DIAMETER CAST IRON VALVE BOX WITH TOP SET FLUSH WITH FINISHED PAVED GRADE.
- GAS SERVICE LINE IS SHOWN FOR GENERAL INFORMATION ONLY. EXACT LOCATION TO BE DETERMINED AND INSTALLED BY ROANOKE GAS COMPANY.
- SANITARY SEWER LATERALS SHALL BE INSTALLED AT 1.0% SLOPE (MIN.) FROM POINT OF CONNECTION TO BUILDING. CONTRACTOR TO CONFIRM INVERT OF EXISTING MAIN OR LATERAL PRIOR TO INSTALLATION OF LATERAL.
- REFER TO BUILDING PLANS FOR EXACT LOCATION OF UTILITY SERVICE CONNECTIONS.
- PAINT ALL PRIVATE FIRE HYDRANTS WHITE.
- WATER SHALL HAVE 18" (MIN) SEPARATION OVER SEWER.



SPECTRUM DESIGN
architects | engineers

10 CHURCH AVE SE, PLAZA SUITE 1 ROANOKE, VIRGINIA 24011 540.342.6001

CAVE SPRING
MIDDLE SCHOOL
ROANOKE, VA

VA DOE PROJECT #080-62-00-101

SPECTRUM DESIGN PROJECT NO. 10006



DATE	17 APRIL, 2011
DESIGN ARCHITECT	MAR
PROJECT ARCHITECT	MF
CHECKED BY	
DRAWN BY	
REVISIONS	NUMBER DATE
CO. COMMENTS	1 06/08/11
COUNTY COMMENTS	2 8/11/11

SHEET TITLE

UTILITY PLAN -
SOUTH

C106