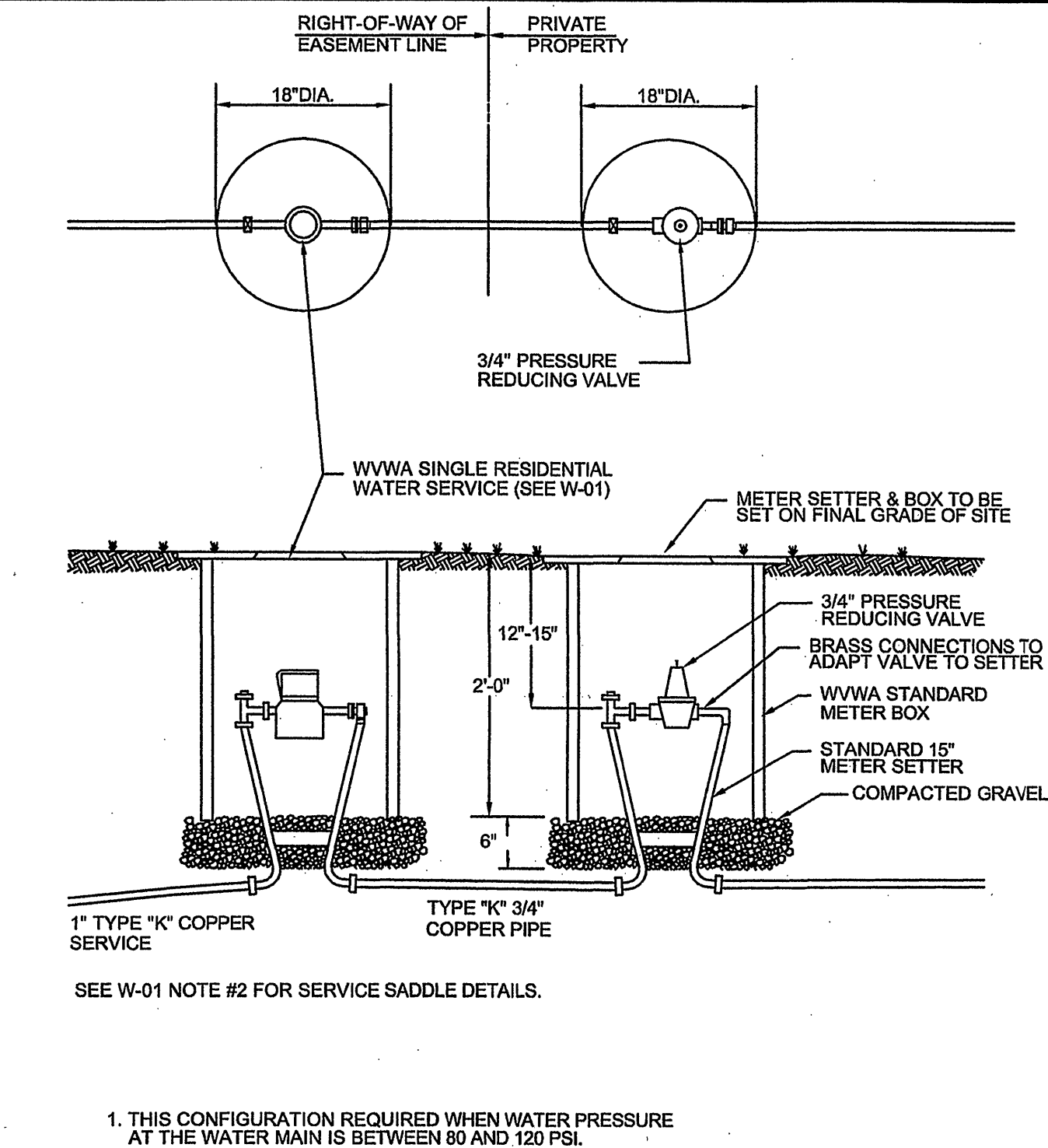
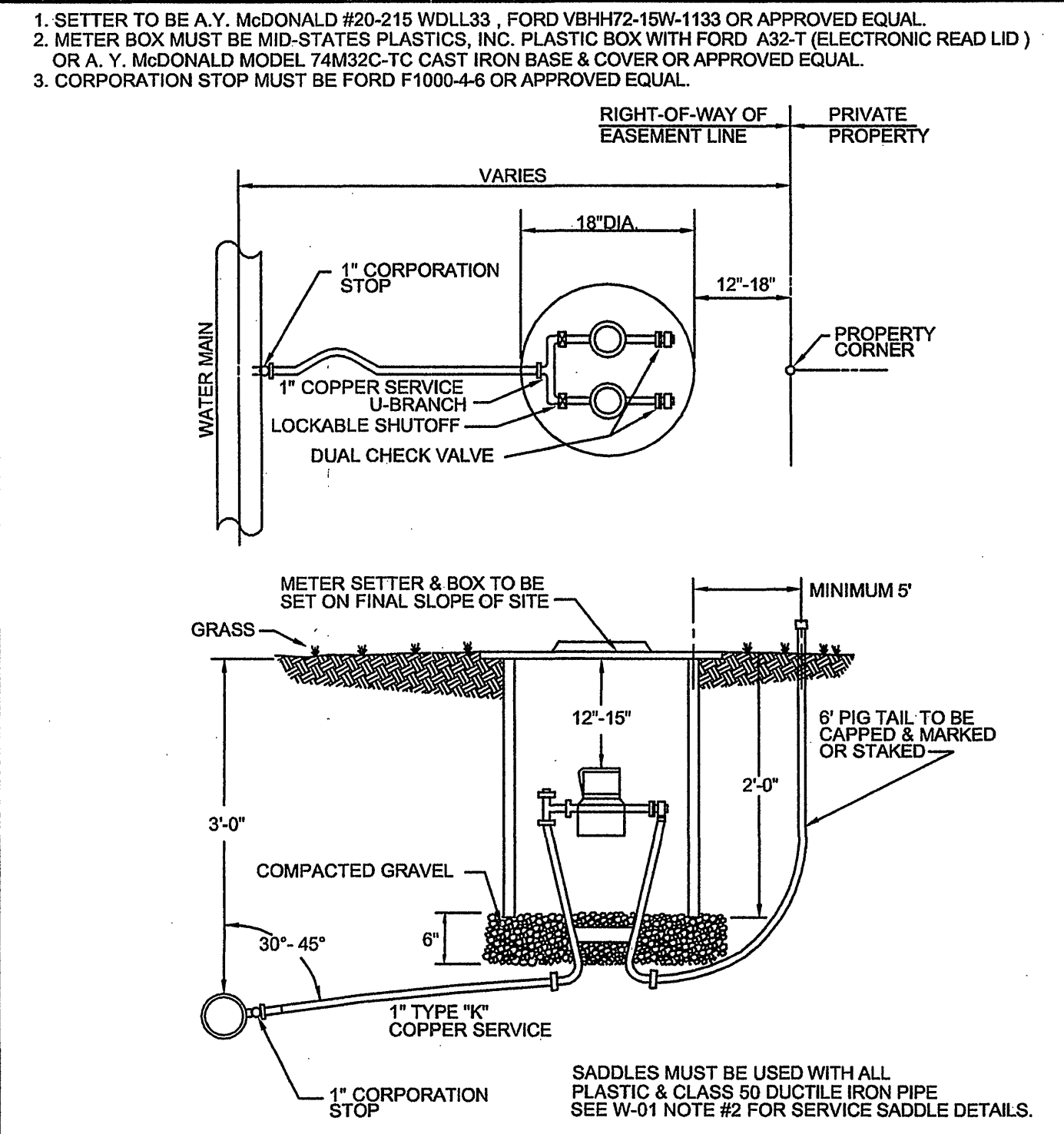


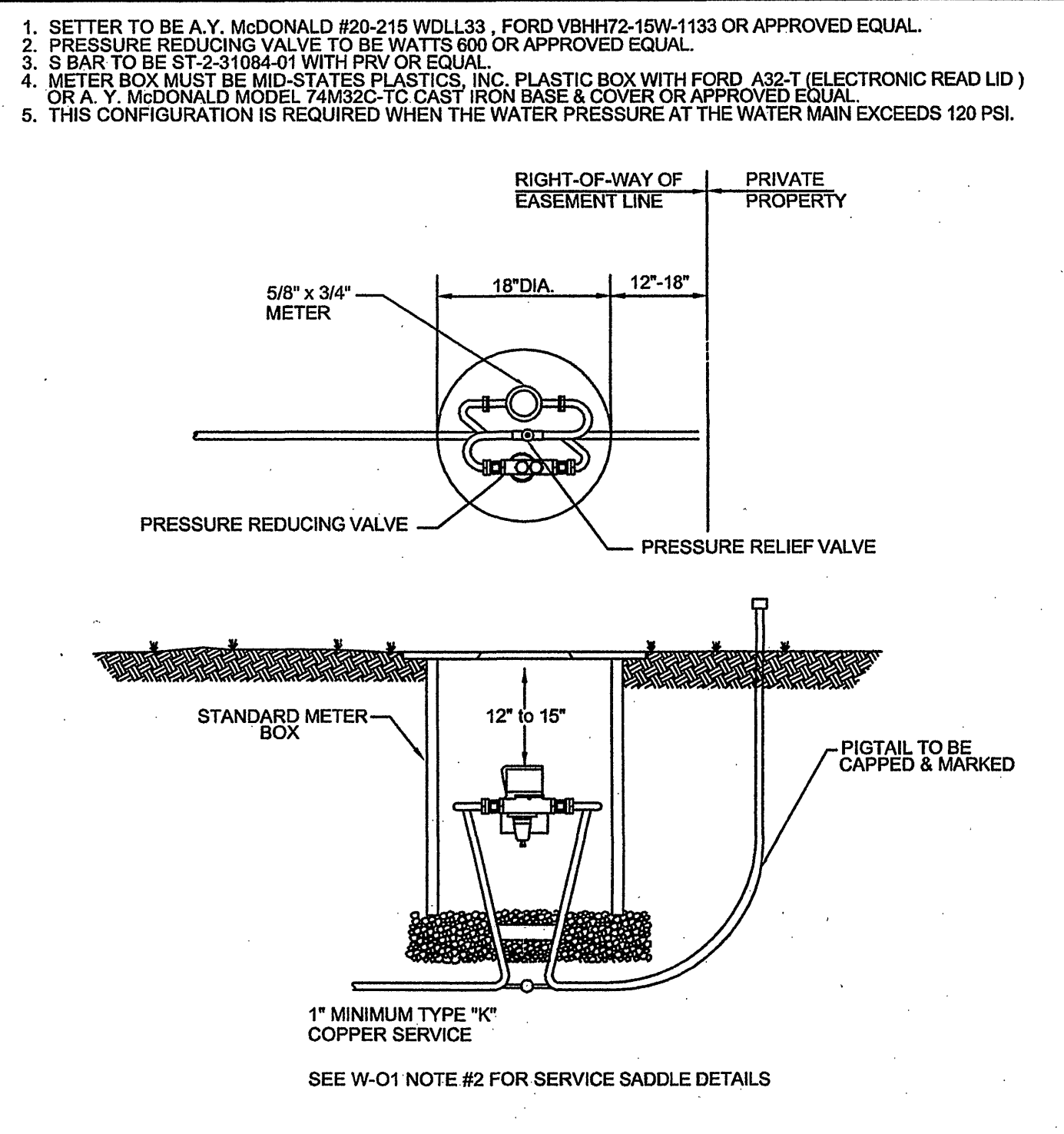
WESTERN VIRGINIA WATER AUTHORITY - CONSTRUCTION STANDARDS			
REVISION DATE	DESCRIPTION	DATE	BY
07/01/04			
TYPE "A" SINGLE RESIDENTIAL WATER SERVICE (LINE PRESSURE UNDER 80 PSI)		W-01	



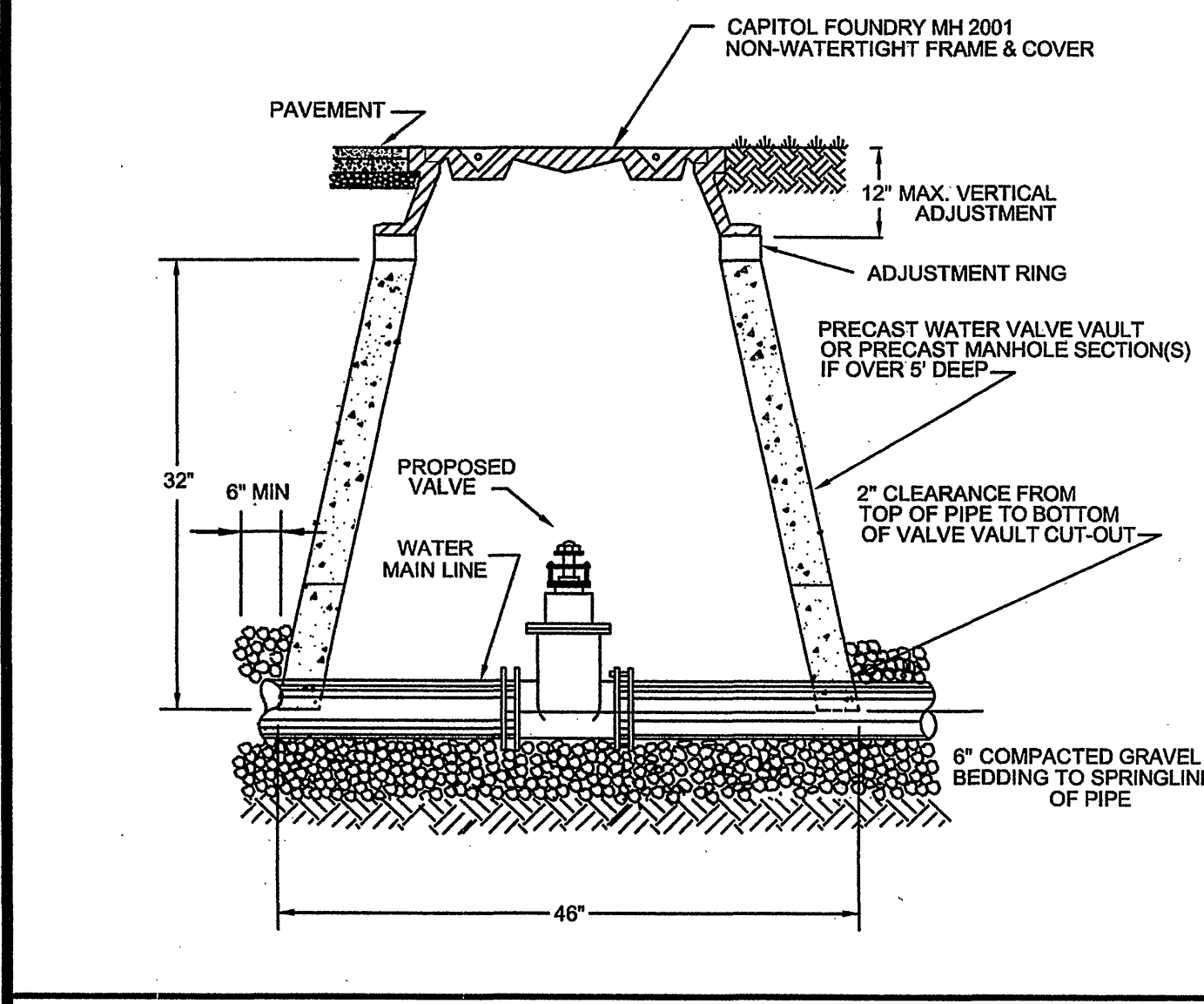
WESTERN VIRGINIA WATER AUTHORITY - CONSTRUCTION STANDARDS			
REVISION DATE	DESCRIPTION	DATE	BY
07/01/04			
TYPE "B" DOUBLE RESIDENTIAL WATER SERVICE (LINE PRESSURE UNDER 80 TO 120 PSI)		W-02	



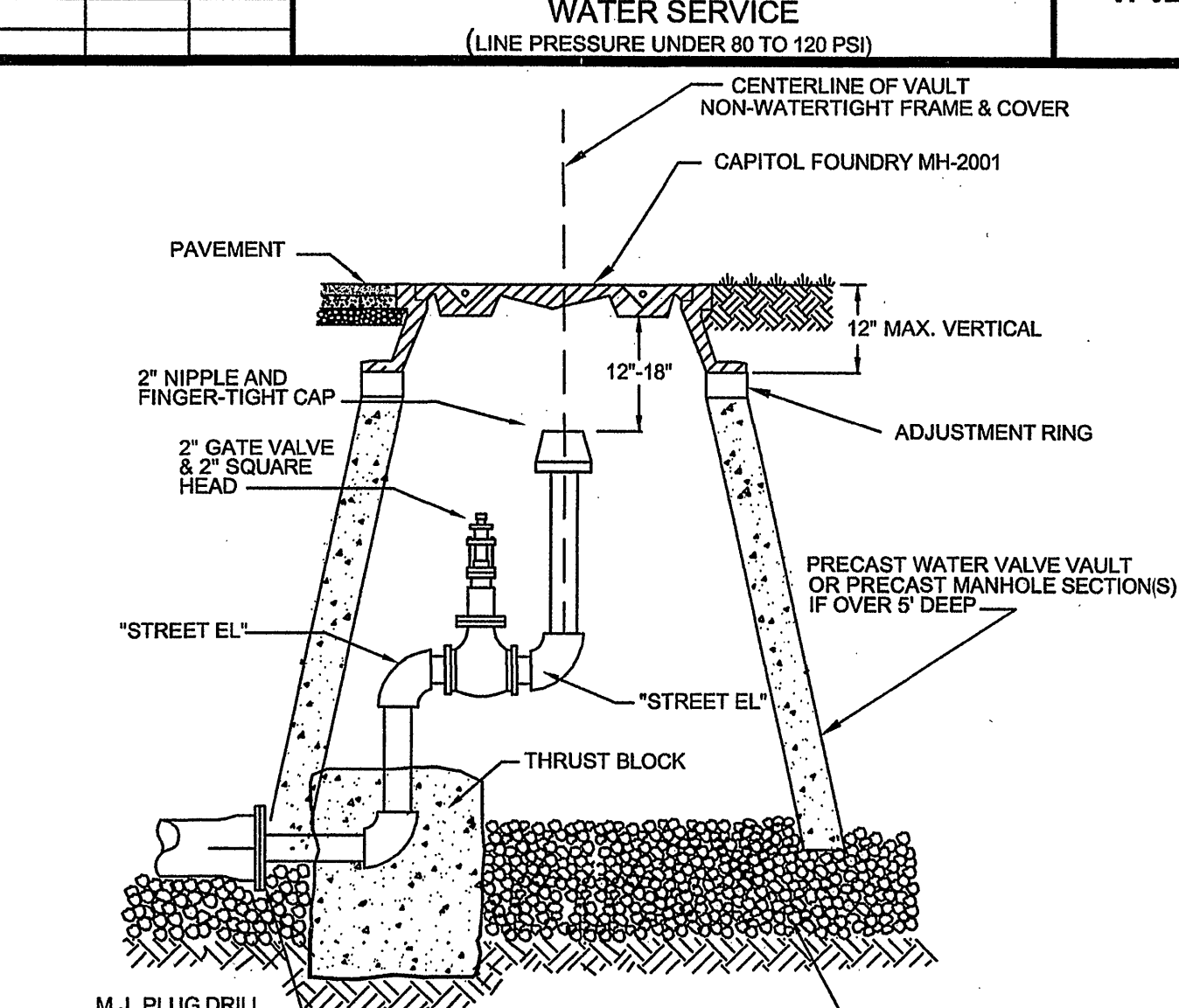
WESTERN VIRGINIA WATER AUTHORITY - CONSTRUCTION STANDARDS			
REVISION DATE	DESCRIPTION	DATE	BY
07/01/04			
DOUBLE RESIDENTIAL WATER SERVICE		W-04	



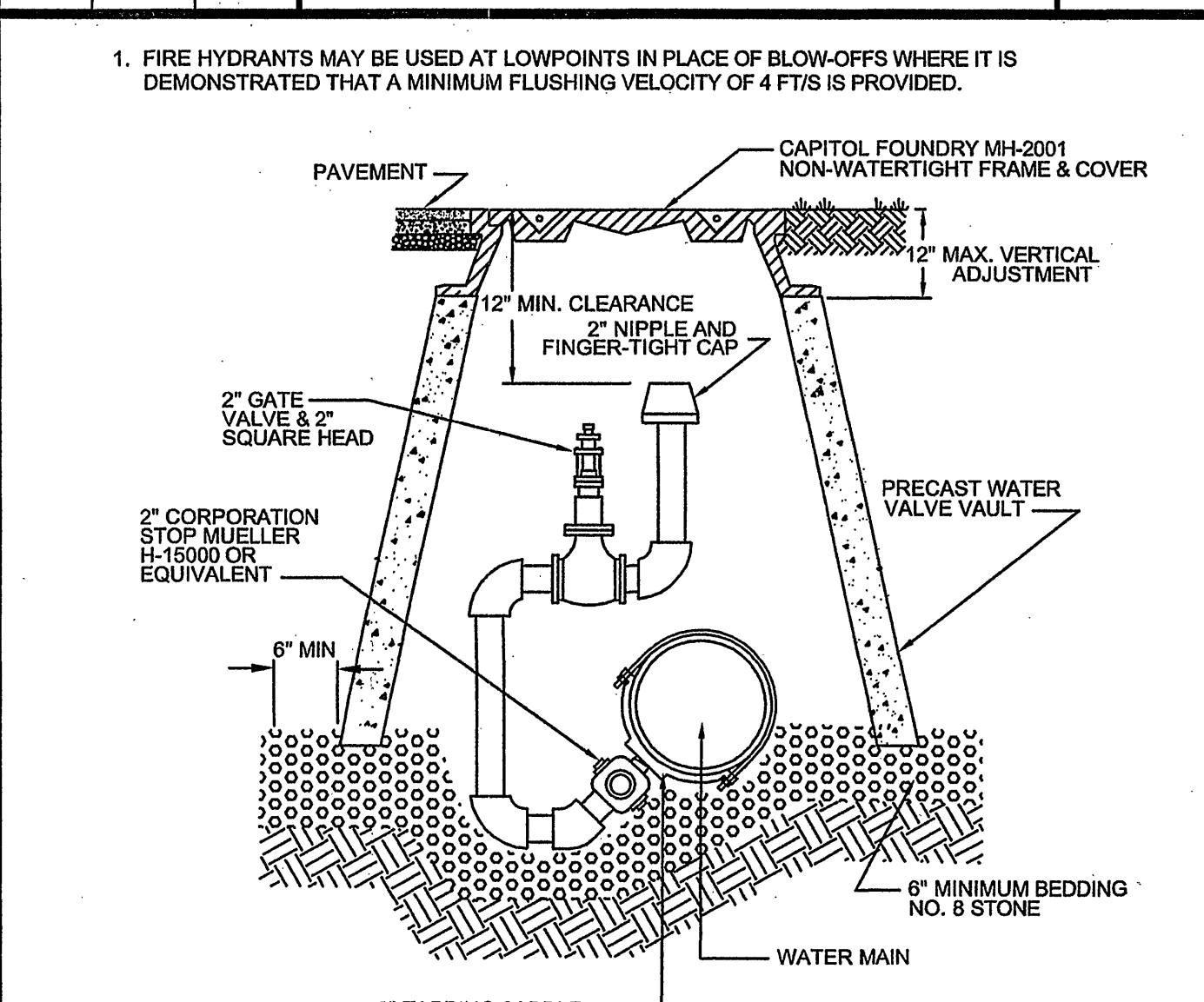
WESTERN VIRGINIA WATER AUTHORITY - CONSTRUCTION STANDARDS			
REVISION DATE	DESCRIPTION	DATE	BY
07/01/04			
TYPE "C" SINGLE RESIDENTIAL SERVICE FOR HIGH PRESSURE (LINE PRESSURE OVER 120 PSI)		W-03	



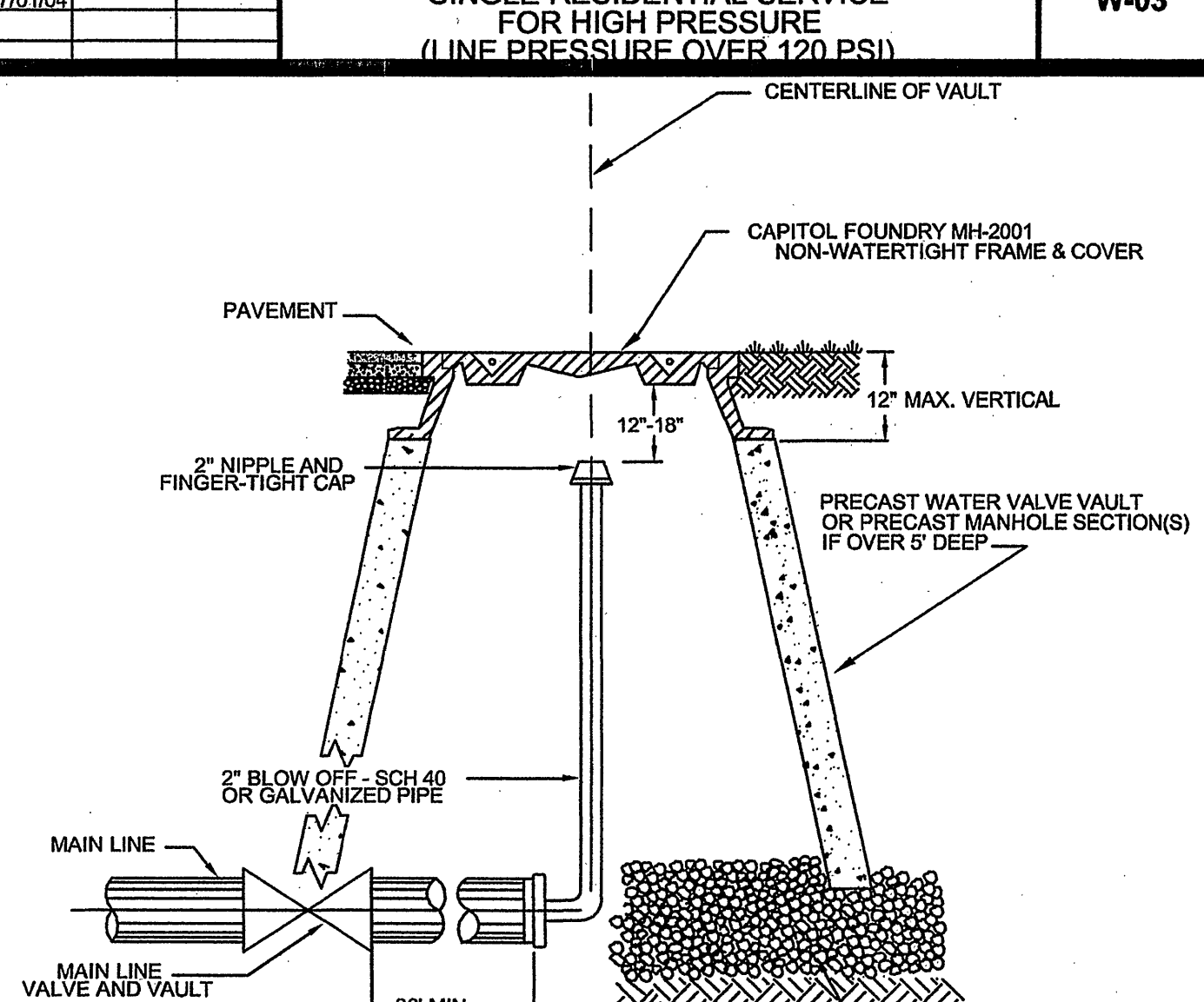
WESTERN VIRGINIA WATER AUTHORITY - CONSTRUCTION STANDARDS			
REVISION DATE	DESCRIPTION	DATE	BY
07/01/04			
WATER LINE VALVE INSTALLATION		W-08	



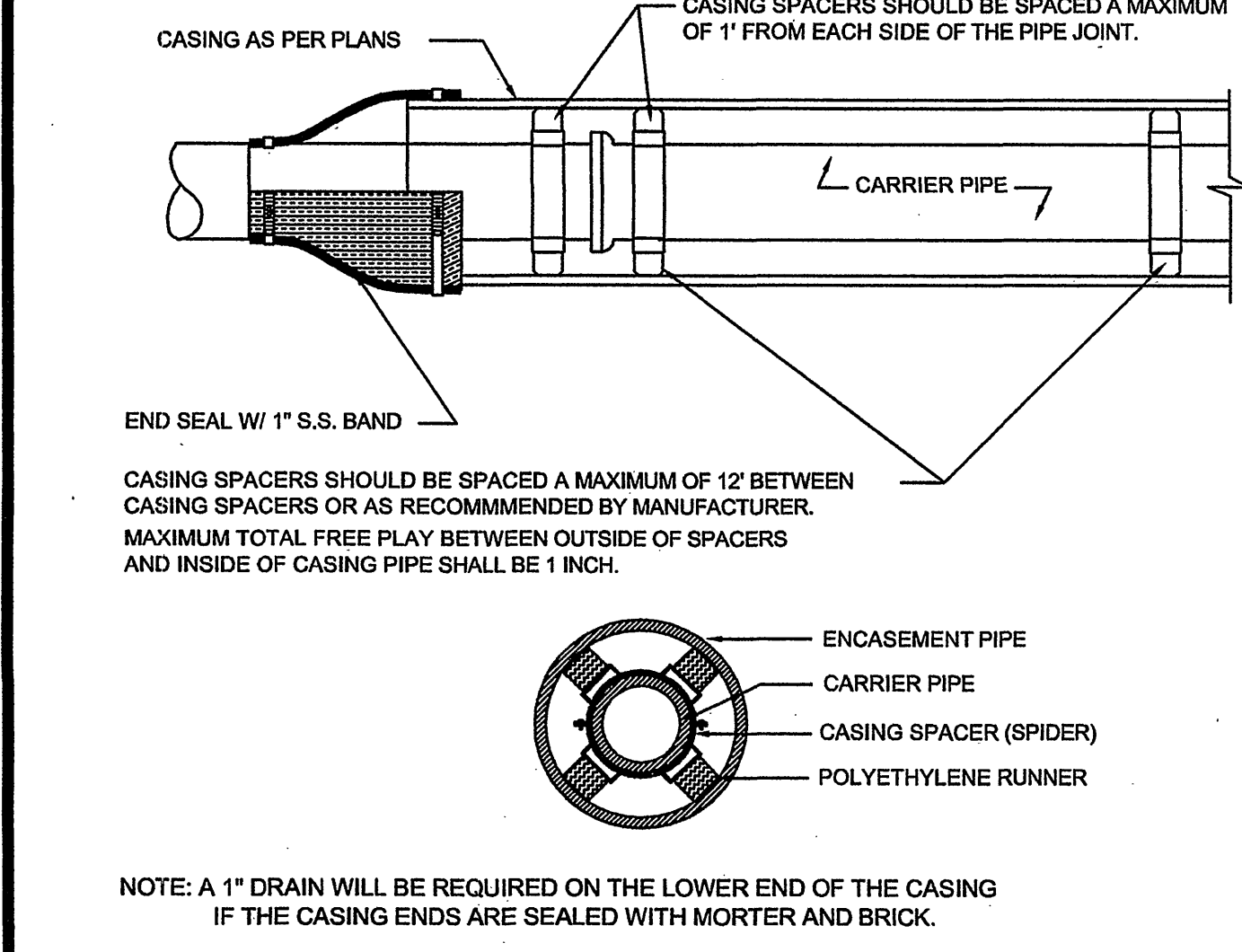
WESTERN VIRGINIA WATER AUTHORITY - CONSTRUCTION STANDARDS			
REVISION DATE	DESCRIPTION	DATE	BY
07/01/04			
PERMANENT END OF LINE		W-09	



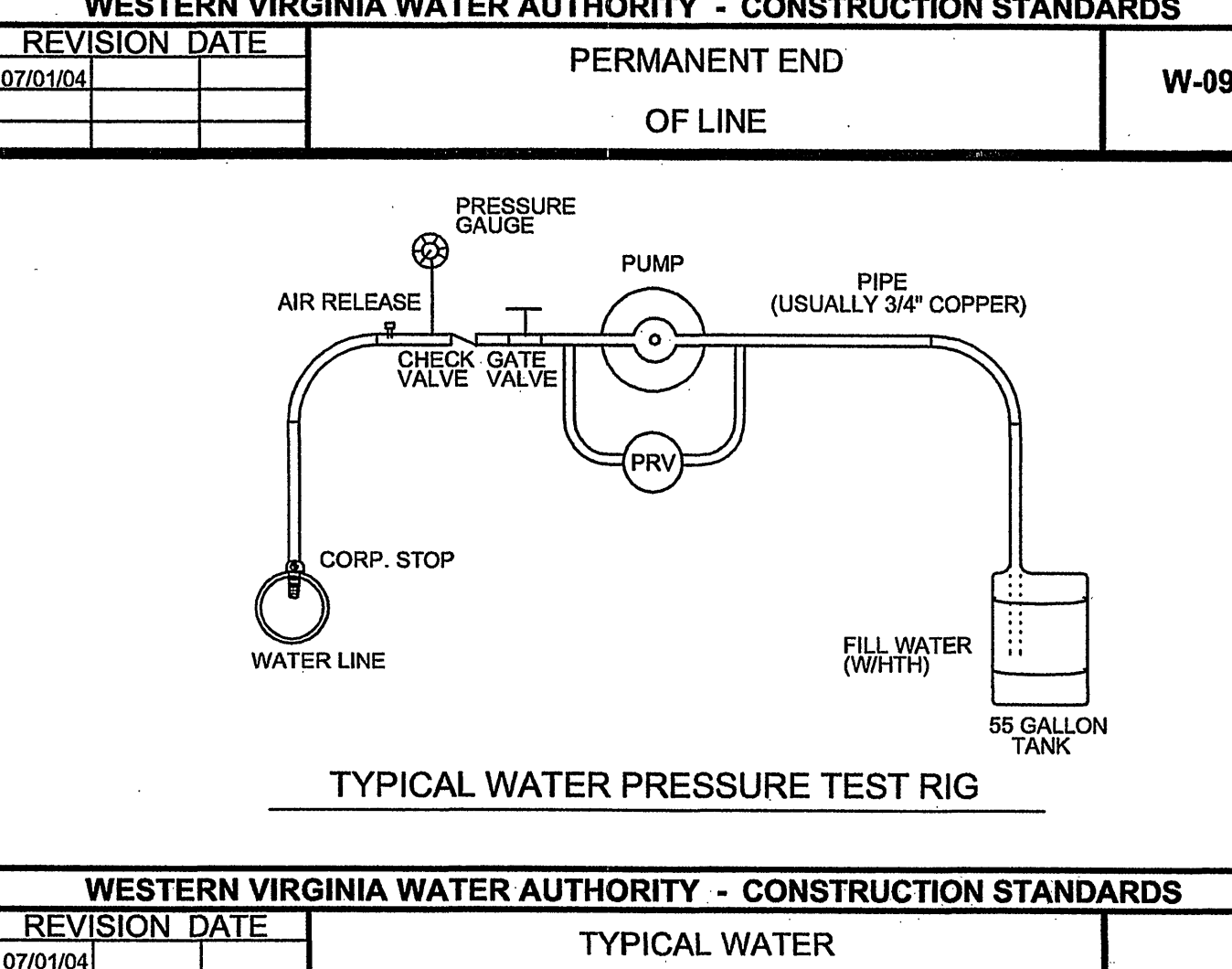
WESTERN VIRGINIA WATER AUTHORITY - CONSTRUCTION STANDARDS			
REVISION DATE	DESCRIPTION	DATE	BY
07/01/04			
IN-LINE BLOW-OFF ASSEMBLY		W-11	



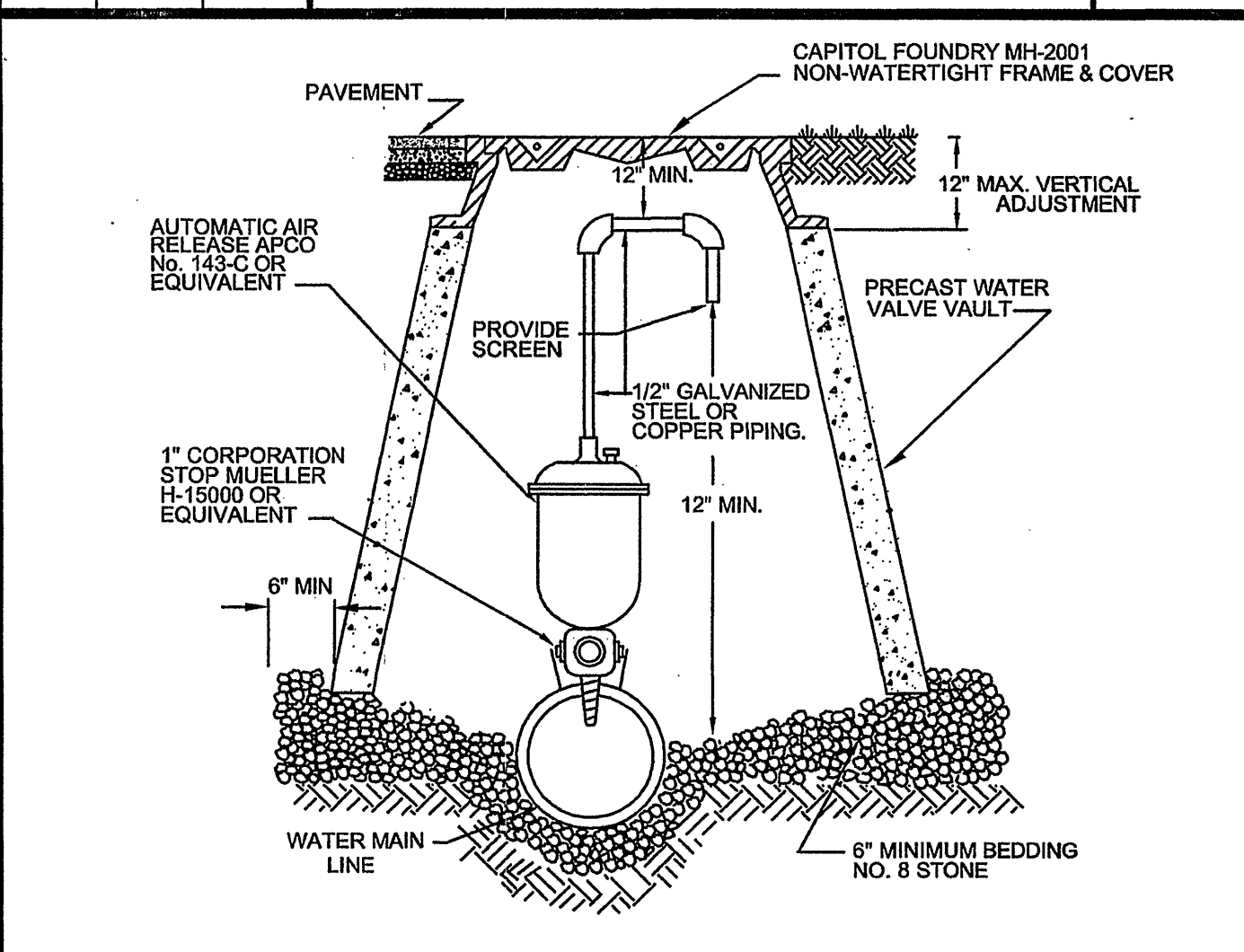
WESTERN VIRGINIA WATER AUTHORITY - CONSTRUCTION STANDARDS			
REVISION DATE	DESCRIPTION	DATE	BY
07/01/04			
BLOW-OFF ASSEMBLY FOR MAIN LINE TEMPORARY TERMINATION		W-10	



WESTERN VIRGINIA WATER AUTHORITY - CONSTRUCTION STANDARDS			
REVISION DATE	DESCRIPTION	DATE	BY
07/01/04			
PIPE SUPPORT IN CASING PIPE		W-22	



WESTERN VIRGINIA WATER AUTHORITY - CONSTRUCTION STANDARDS			
REVISION DATE	DESCRIPTION	DATE	BY
07/01/04			
TYPICAL WATER PRESSURE TEST RIG		W-21	



WESTERN VIRGINIA WATER AUTHORITY - CONSTRUCTION STANDARDS			
REVISION DATE	DESCRIPTION	DATE	BY
07/01/04			
AUTOMATIC AIR RELEASE ASSEMBLY		W-12	

WVWA WATER DETAILS
 REFERENCE IS DIRECTED TO THE
 WESTERN VIRGINIA WATER AUTHORITY
 DESIGN AND CONSTRUCTION STANDARDS
 FIRST EDITION, DATED JULY 2004
 DETAILS PROVIDED BY THE WVWA

WVWA ID# 8QCHK8