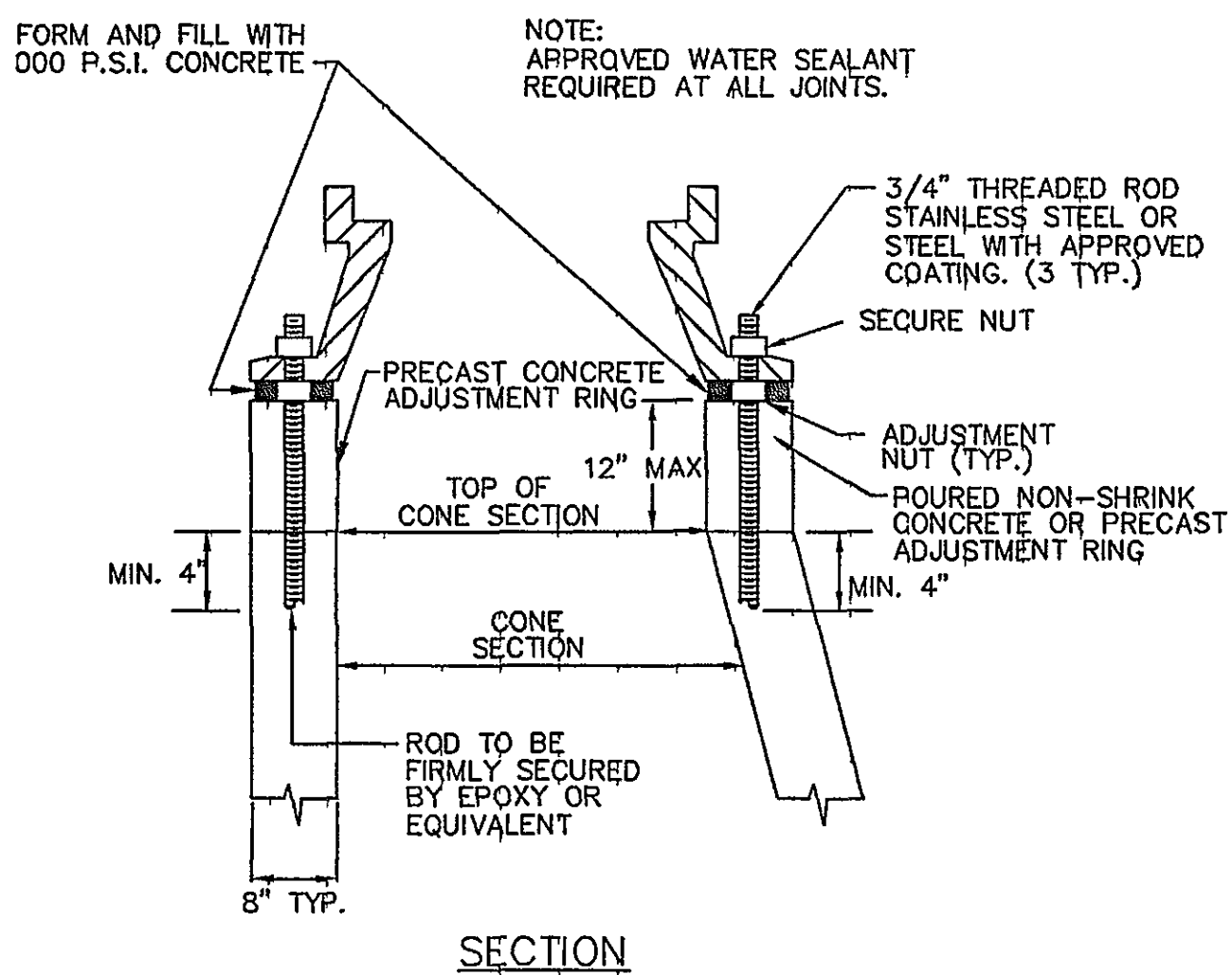
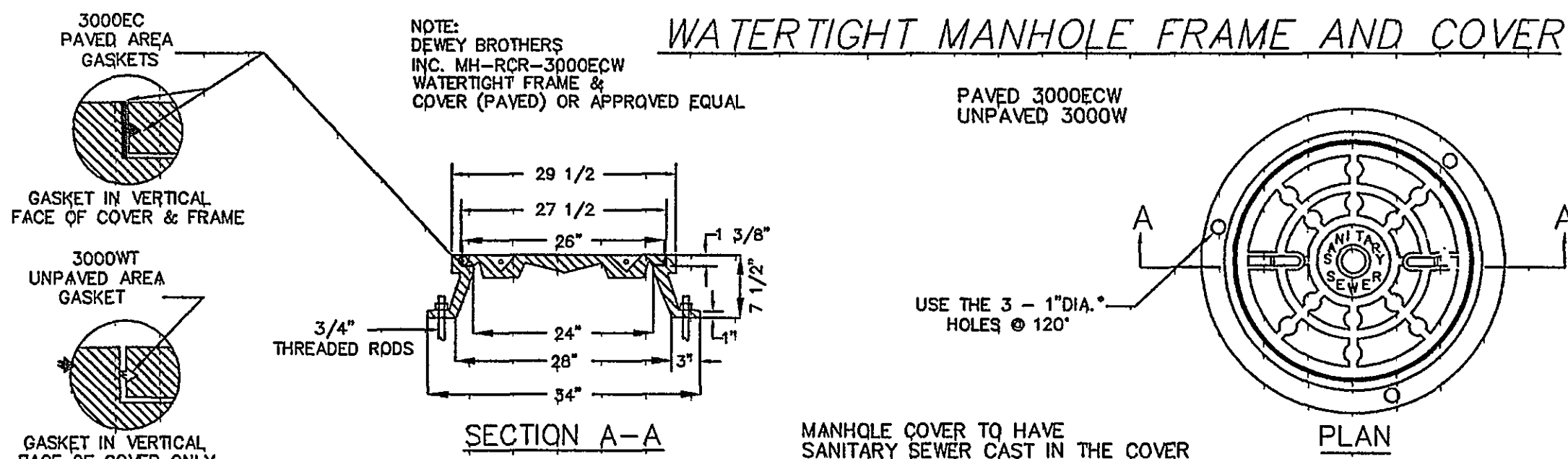


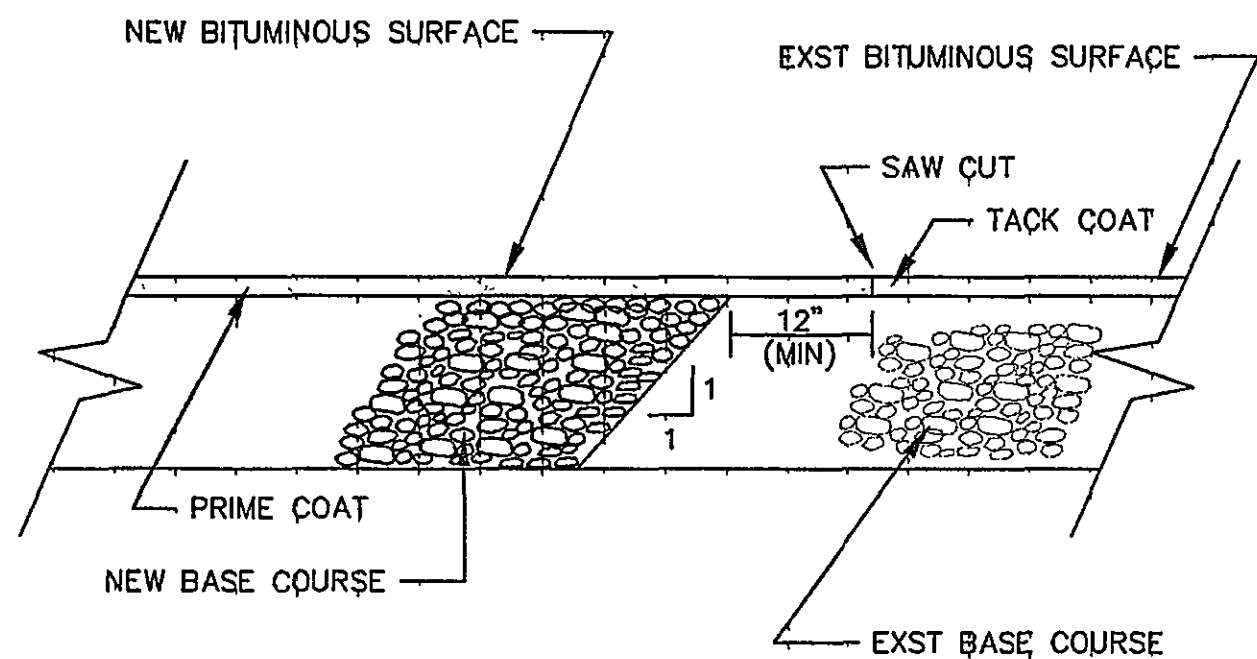
**STALLATION DETAIL FOR ALL FRAMES AND COVERS**



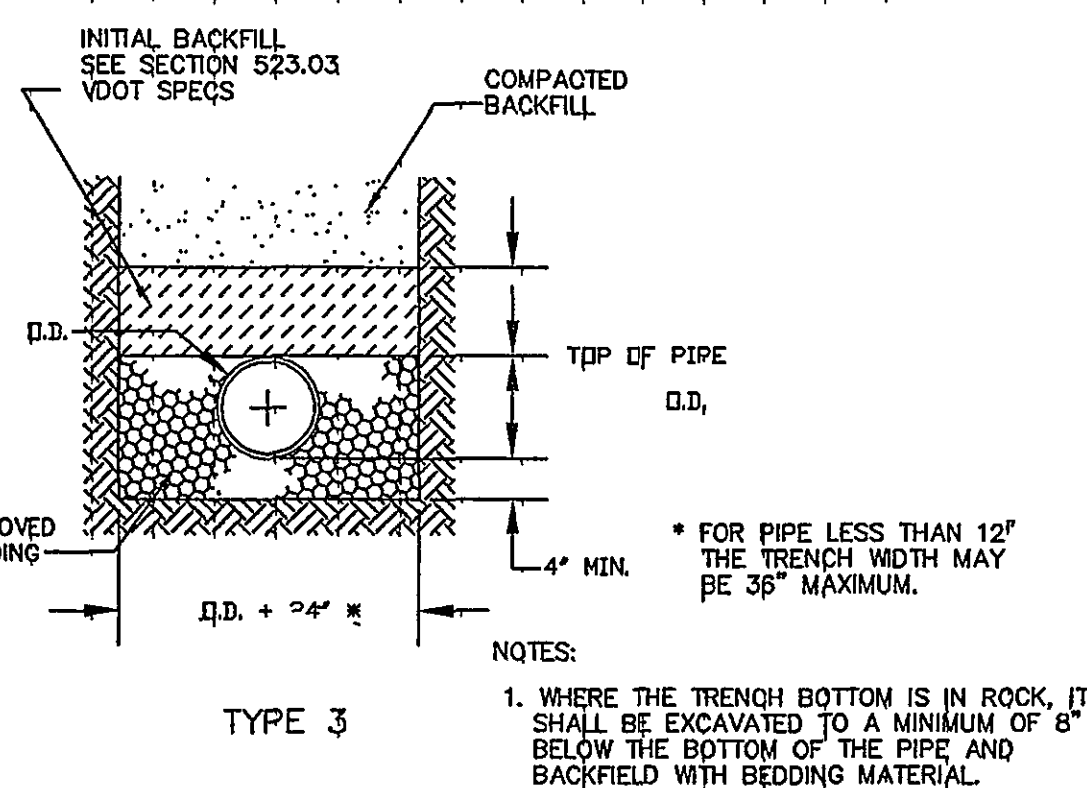
**WATERTIGHT MANHOLE FRAME AND COVER**



**PAVEMENT TRANSITION DETAIL**



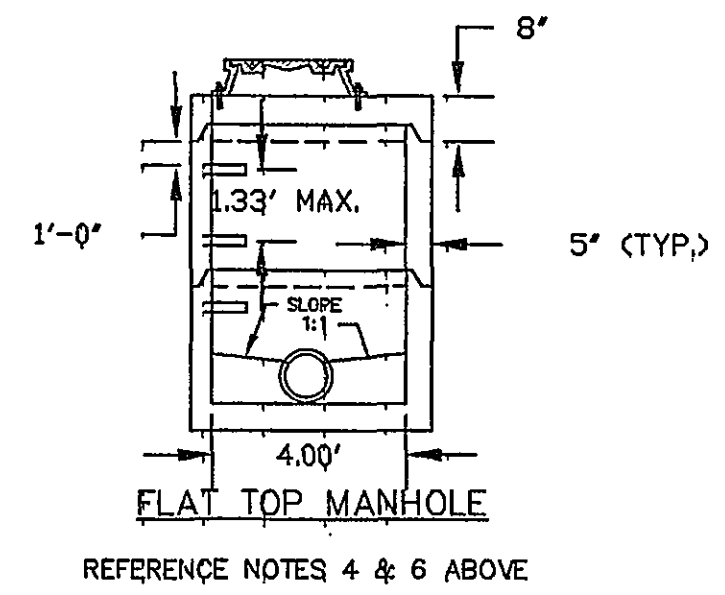
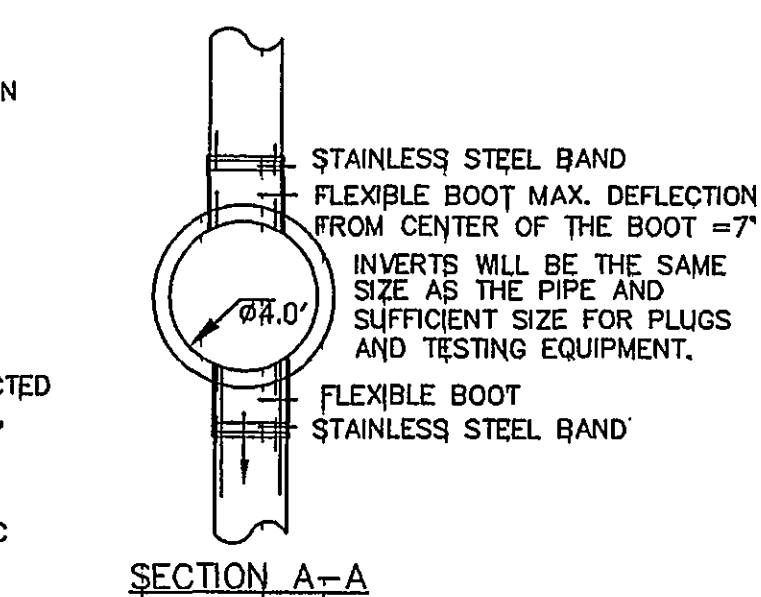
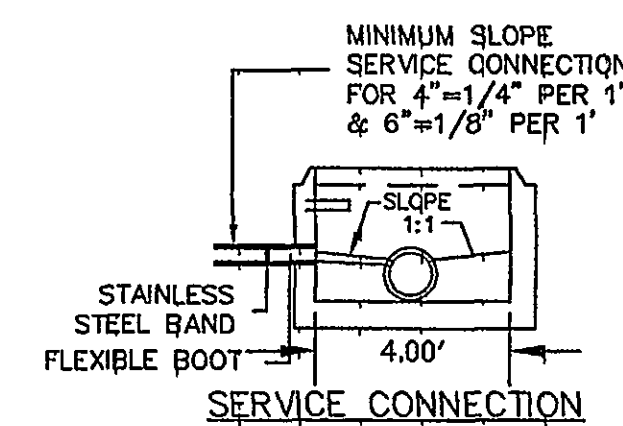
**UTILITY BEDDING AND PROTECTION SANITARY SEWER FACILITIES**



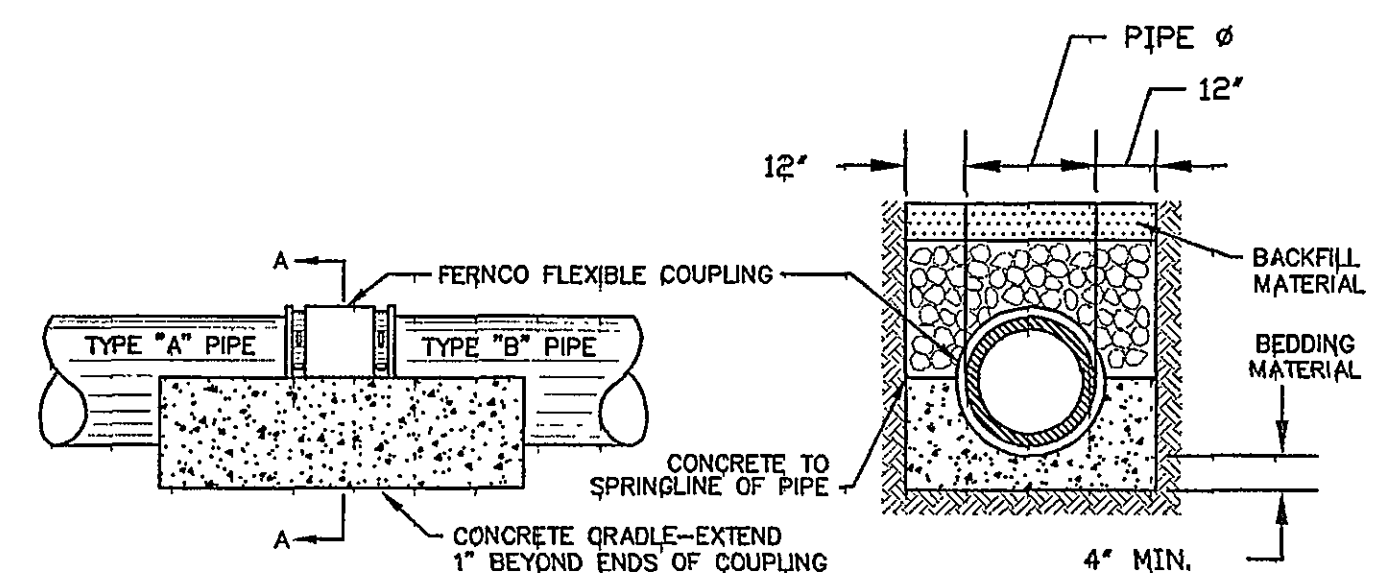
**4" STANDARD MANHOLE FOR PIPE 15" OR SMALLER**

NOTES:

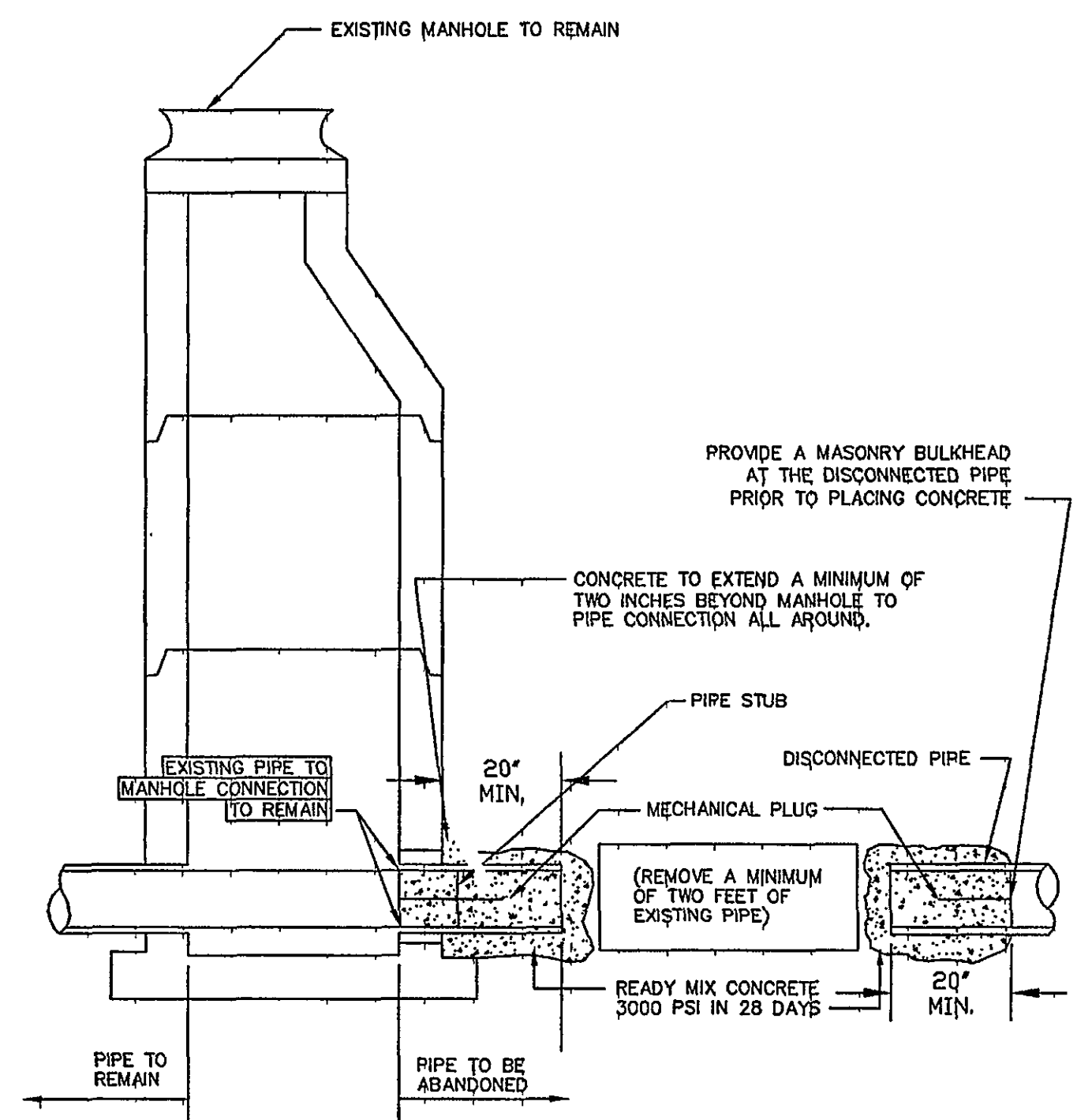
- ALL MANHOLE FRAMES AND COVERS SHALL BE DEWEY BROTHERS, INC. MH-RCR-3000W IN NON-PAVED AREAS REQUIRING WATERTIGHT FRAME & COVERS AND MH-RCR-3000EC-WT IN PAVED AREAS, OR APPROVED EQUAL.
- THE FIRST STEP SHALL BE 1 FOOT FROM THE COVER.
- THE FRAME AND COVER SHALL BE PROPERLY ALIGNED WITH THE 2 FOOT OPENING OF THE MANHOLE STRUCTURE AND BOLTED IN PLACE.
- ALL SAMPLING MANHOLES SHALL BE CONSTRUCTED AS PER MANHOLE DETAILS. WHEN NECESSARY, THE FLAT TOP MANHOLE MAY BE SUBSTITUTED WITH ECCENTRIC OPENING AT STEPS.
- FLAT TOP TO BE VDOT APPROVED FOR TRAFFIC BEARING WHEN USED IN AREAS SUBJECT TO TRAFFIC, 8" MIN.



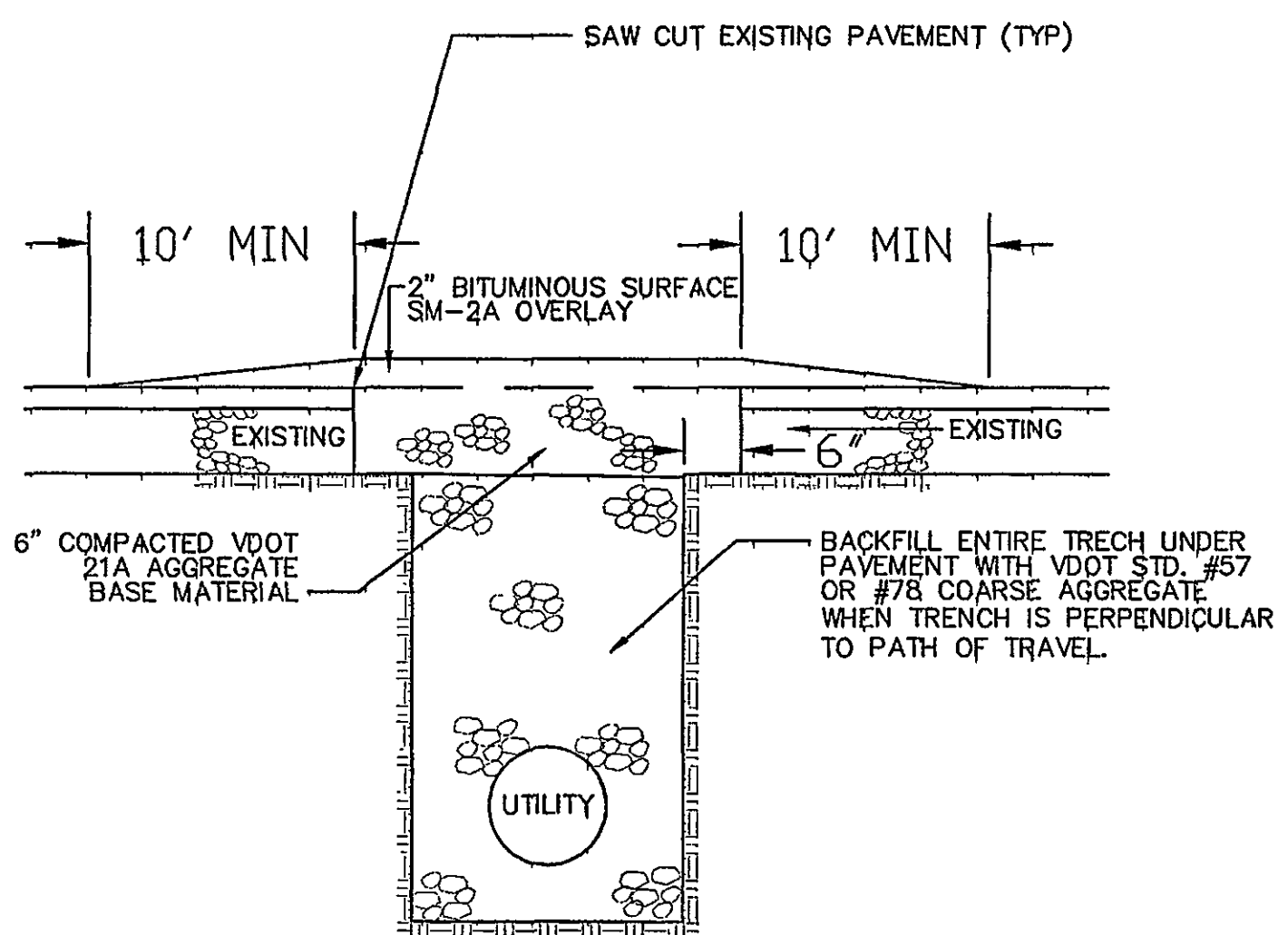
**JOINING DISSIMILAR PIPE**



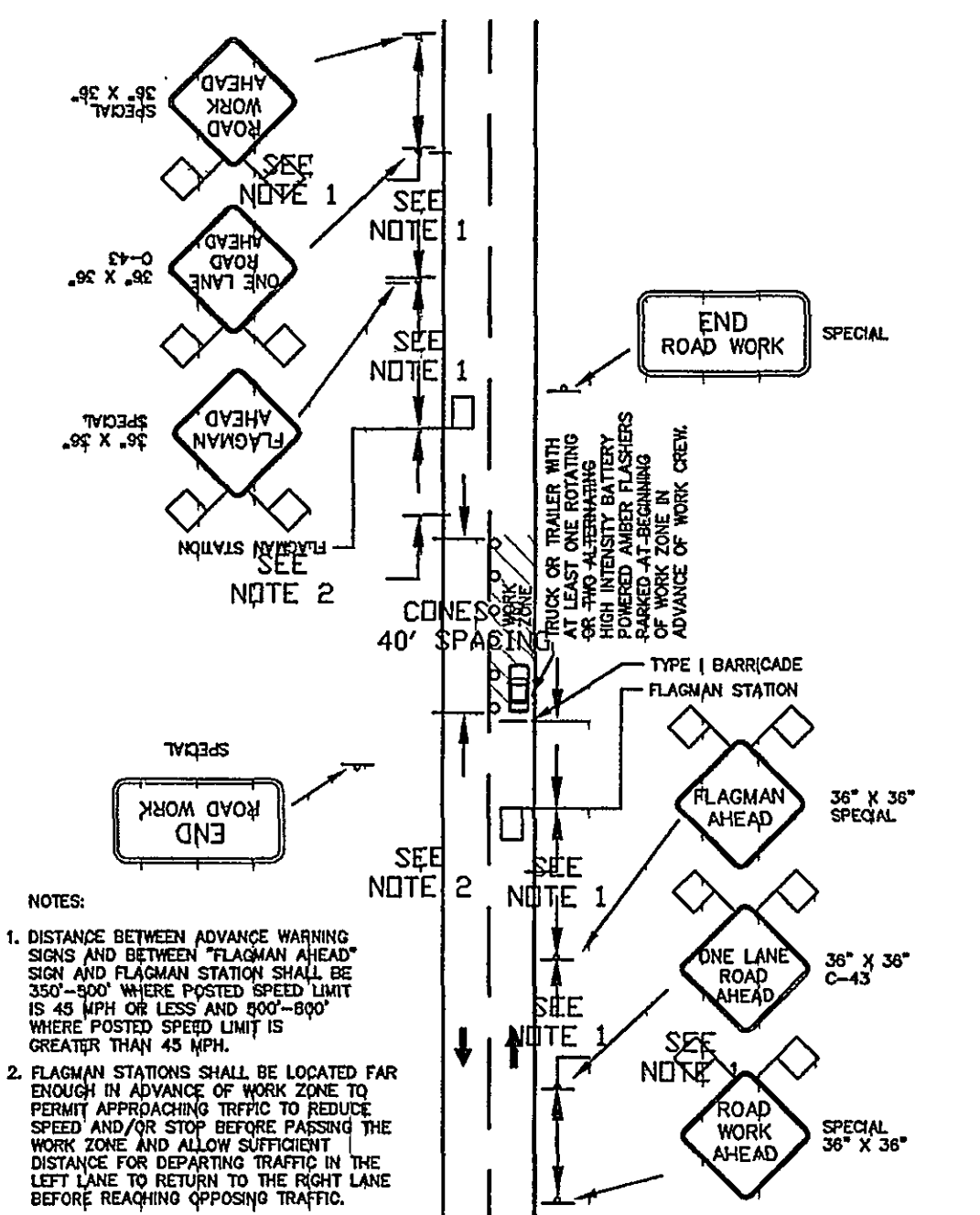
**SANITARY SEWER PIPE ABANDONMENT AT A MANHOLE**



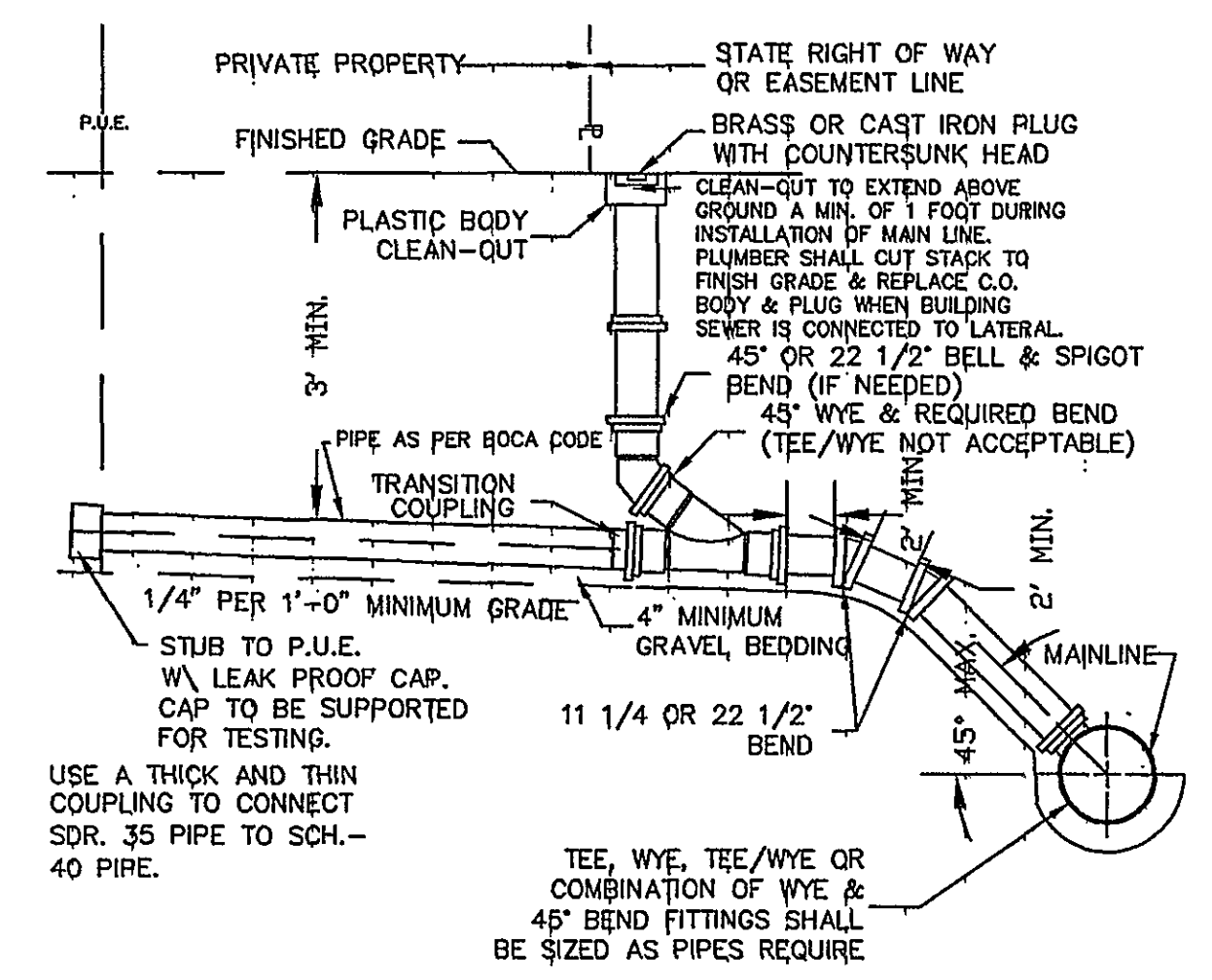
**PAVEMENT REPLACEMENT**



**TYPICAL TRAFFIC CONTROL FOR REPAIRS TO PAVEMENT ON TWO-LANE PRIMARY HIGHWAYS (NON-LIMITED ACCESS)**



**SANITARY SEWER LATERAL FOR DEEP SEWERS**



**LMW P.C.**  
ENGINEERING-ARCHITECTURE-SURVEYING  
102 ALBEMARLE AVE., S.E.  
ROANOKE, VIRGINIA 24013  
(540) 345-0075  
FAX (540) 342-4456

**CHESTERTON STREET SANITARY SEWER REPLACEMENT PROJECT**  
CITY OF ROANOKE, VIRGINIA

NO.	DATE	DESCRIPTION	BY

STANDARD DETAILS

Designed By: DRM  
Drawn By:  
Checked By:  
Approved By: DRM  
Submitted By: DRM  
Drawing: 2039DETLDW  
Date: 03/15/00  
Scale: NONE  
Commission No.: 2039  
Sheet: 5 of 5

**"RECORD DRAWING"**  
Nov. 14, 2000