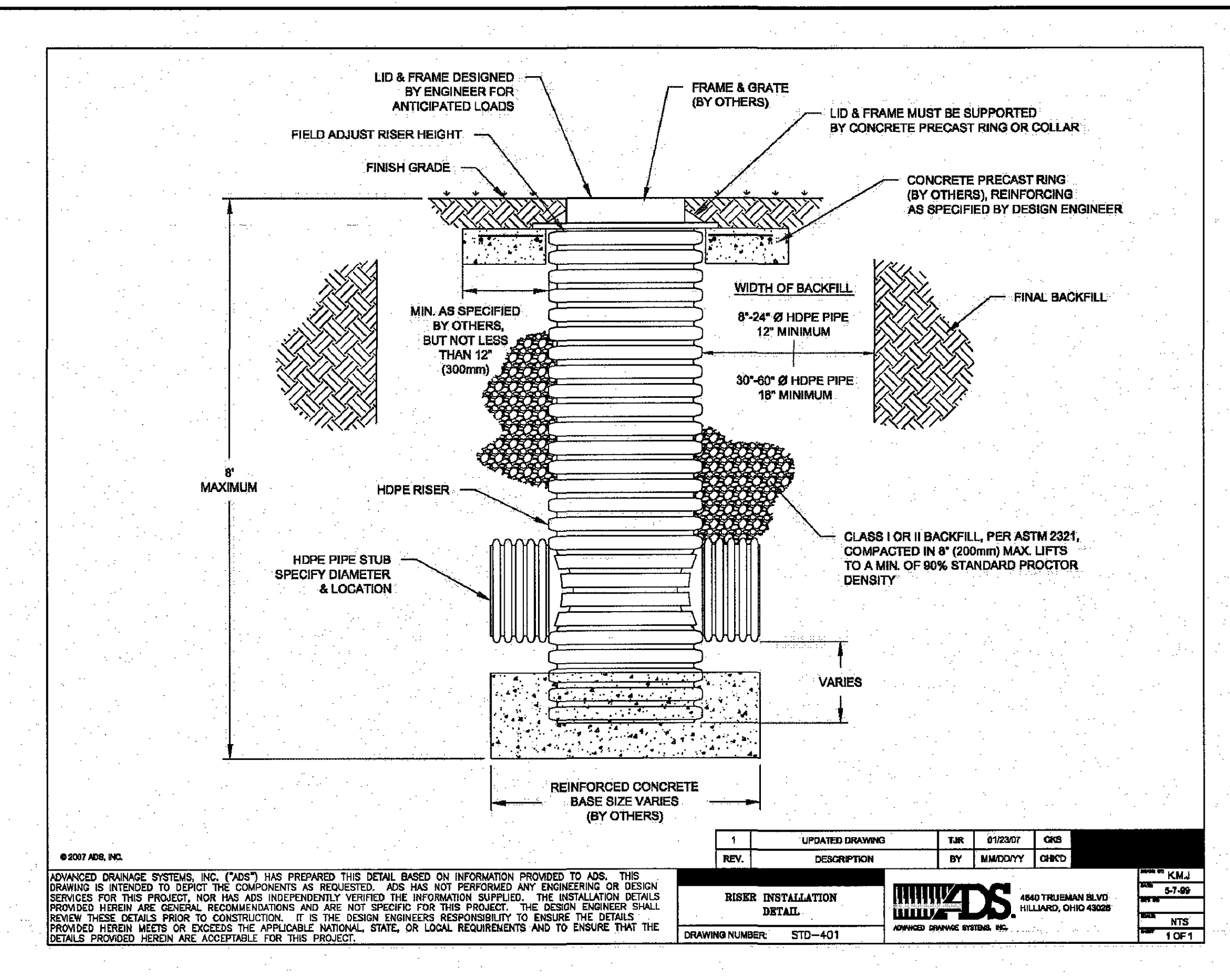


NOTES FOR ABOVE ADS NYLOPLAST DETAIL

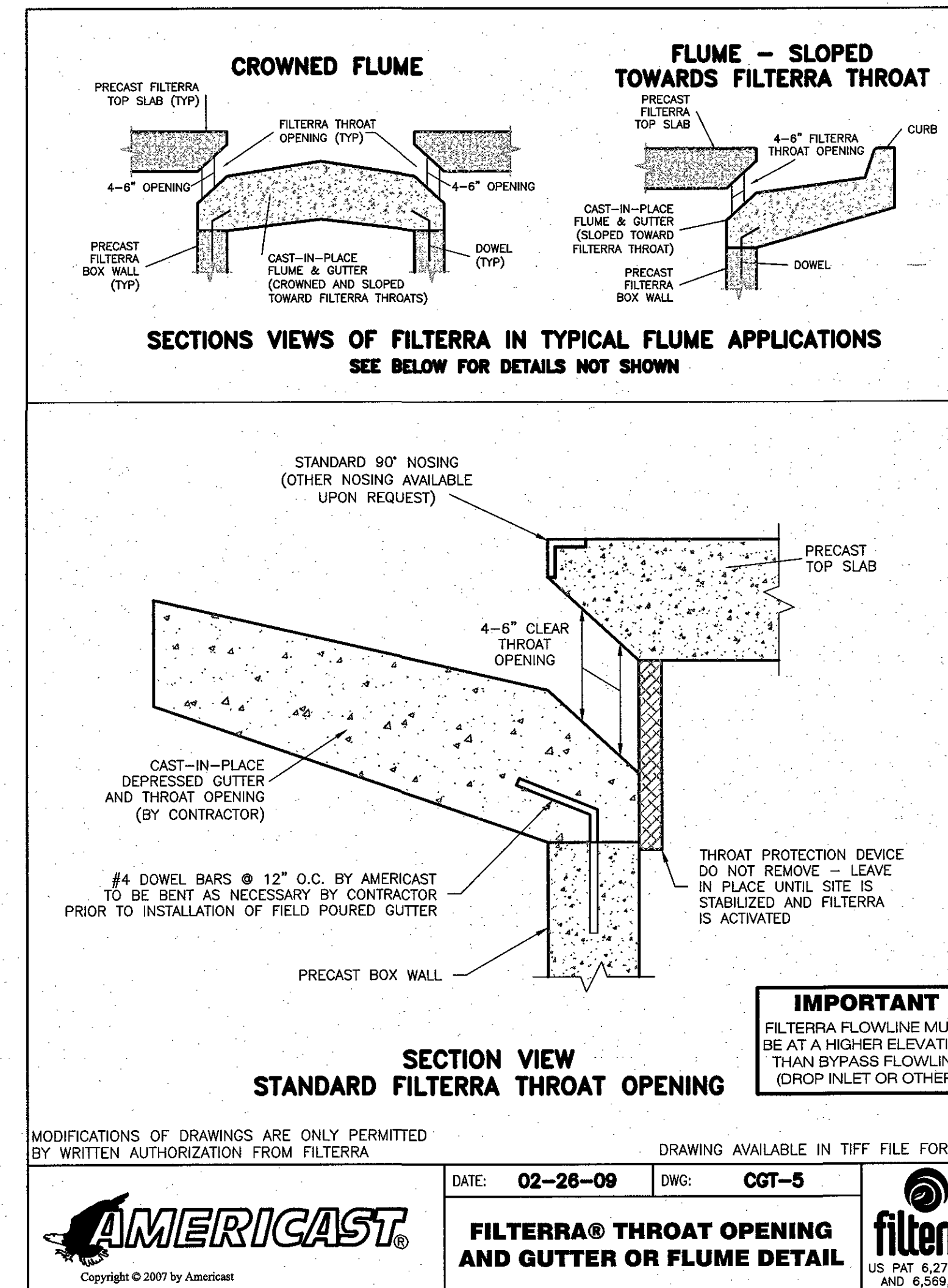
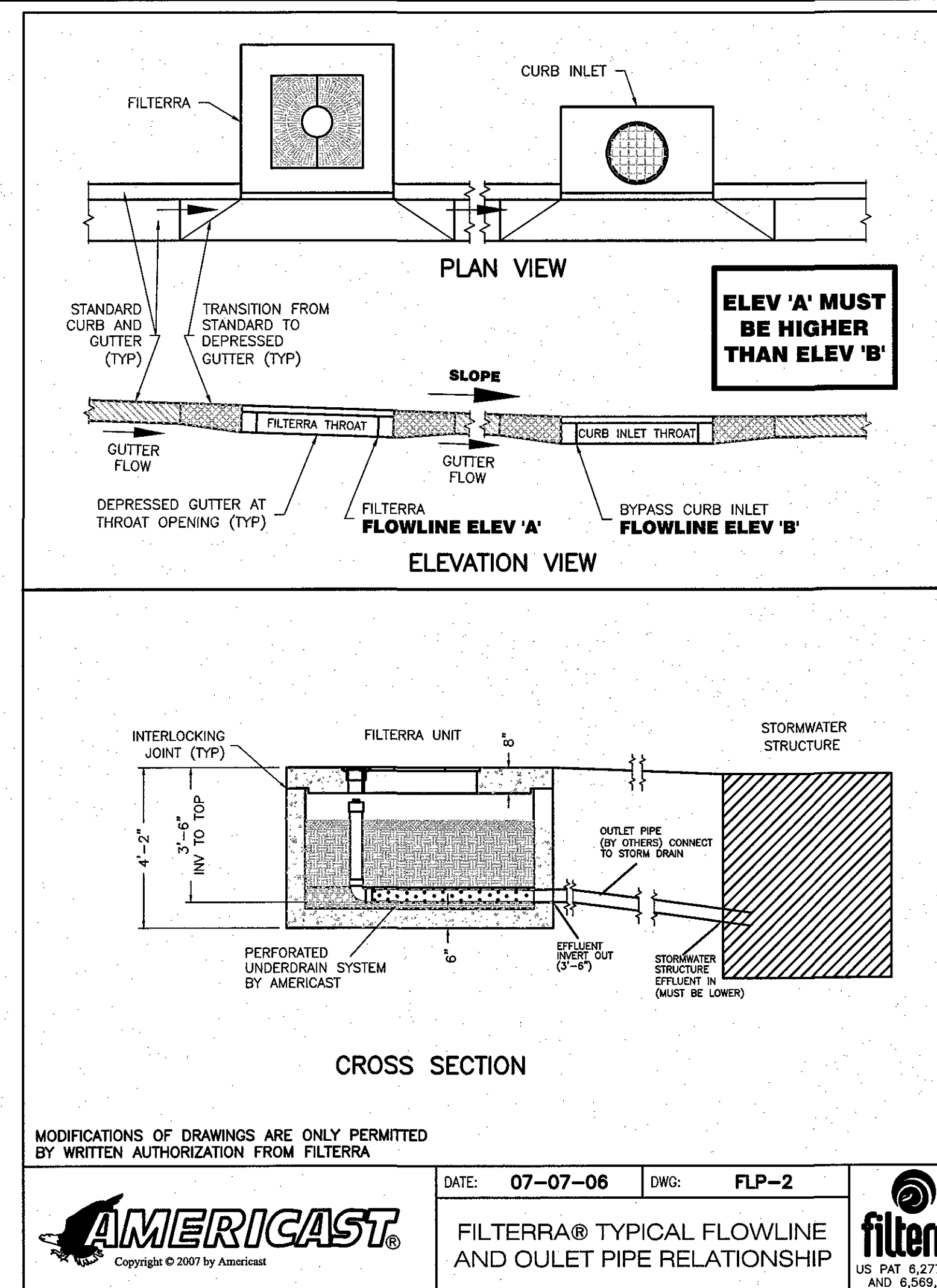
- THIS DETAIL IS FOR ADS NYLOPLAST STRUCTURES USED TO CONNECT STORMDRAIN PIPES AS SHOWN ON THE PLANS. IT IS NOT FOR ROOF DRAINS
- DEPTHS SHALL BE AS REQUIRED TO ACCOMMODATE INVERTS SHOWN ON THE PLANS.
- RISER PIPE SHALL BE MINIMUM 24" DIAMETER UNLESS LARGER SIZE IS REQUIRED FOR INLET/OUTLET PIPES.
- USE H20 TRAFFIC RATED STANDARD GRATES TO ALLOW EASY INSPECTION AND MAINTENANCE.



NOTES FOR ABOVE ADS DETAIL

- THIS DETAIL IS FOR ADS STRUCTURES USED TO CONNECT ROOFDRAIN PIPES AS SHOWN ON THE PLANS.
- DEPTHS SHALL BE AS REQUIRED TO ACCOMMODATE INVERTS SHOWN ON THE PLANS.
- RISER PIPE SHALL BE 10" DIAMETER
- CONCRETE RINGS AND BASE SHALL BE 24" DIAMETER.
- USE NON-TRAFFIC RATED ADA COMPATIBLE GRATES TO ALLOW EASY INSPECTION.

CONSULT ADS AND FILTERRA LITERATURE FOR INFORMATION SPECIFIC TO THE PRODUCTS USED ON THIS PROJECT.



INLET STYLE FILTERRA UNITS

