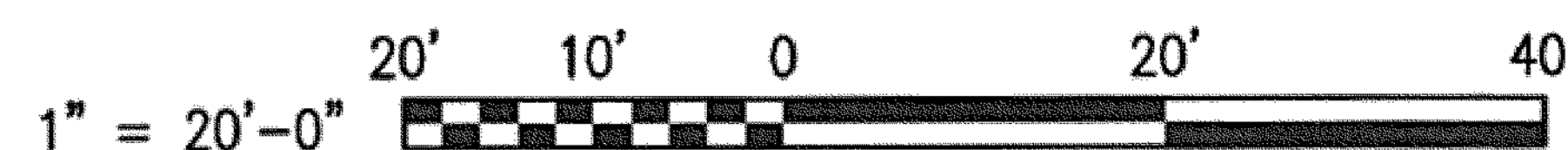
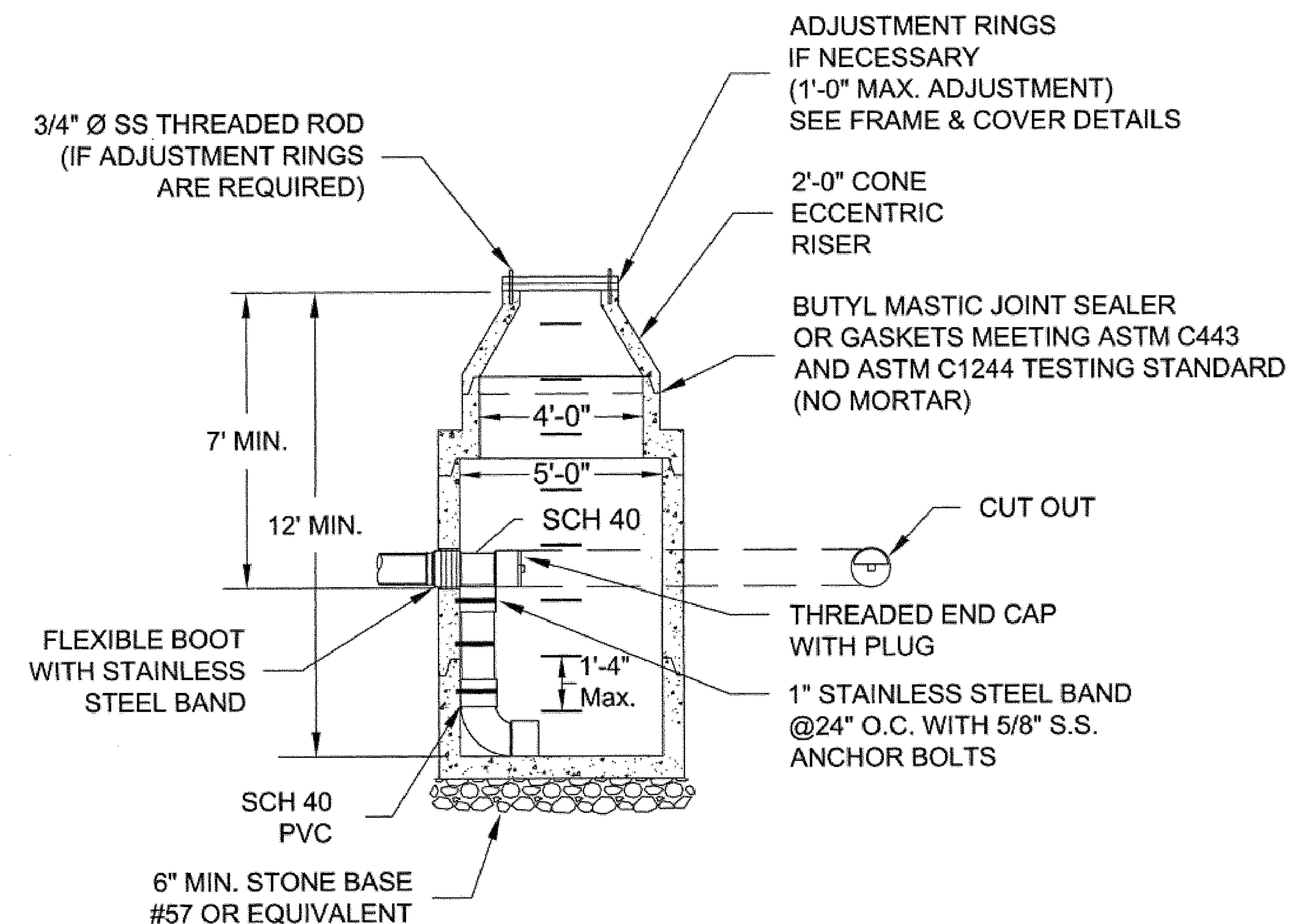


8" SAN. SEWER MAIN PROFILE  
(Ex S-5 TO Ex S-5b)



1. MATERIALS AND FABRICATION IN ACCORDANCE WITH ASTM C478-09.
2. STEPS SHALL BE VERTICALLY ALIGNED. FIRST STEP SHALL BE WITHIN 12" OF COVER, BOTTOM STEP SHALL BE WITHIN 24" OF BOTTOM OF MANHOLE.
3. THE FRAME AND COVER SHALL BE PROPERLY ALIGNED WITH THE 2 FOOT OPENING OF THE MANHOLE STRUCTURE AND BOLTED IN PLACE.
4. RELINER BY DURAN INSIDE DROP BOWLS AND PIPE BRACKETS WILL BE ALLOWED.
5. GROUT ANNULAR SPACE BETWEEN PIPE AND PRECAST MANHOLE ON INSIDE OF MANHOLE.
6. STEPS SHALL BE A MINIMUM OF 90 DEGREES FROM DROP & ALIGNED VERTICALLY.
7. INSIDE DROP ONLY ALLOWED WHEN DEPTH EXCEEDS 12' AND APPROVED BY PARTICIPATING UTILITY.
8. 6' MINIMUM DIAMETER MANHOLE REQUIRED FOR TWO OR MORE INSIDE DROP CONNECTIONS (MAIN LINE OR LATERAL).
9. SEE FRAME AND COVER DETAIL.
10. SEE DETAIL S-01 FOR EXTERIOR COATING AND JOINT SEAL REQUIREMENTS.

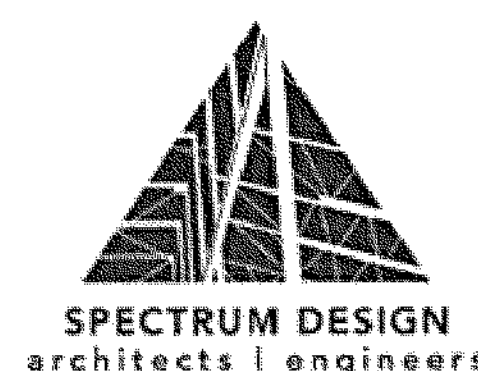


# WESTERN VIRGINIA REGIONAL - CONSTRUCTION DETAIL

## INSIDE DROP MANHOLE

S-3

01/01/14



COMM. NO.  
14132

DATE:  
5/18/18

CLAUDE MOORE COMPLEX ADDITION

## WELLS AVE SEWER PROFILE VERTICAL ADJUSTMENT

SCALE: 1"=20'

REF. NO.: C102

DRAWN BY:  
THL

CHECKED BY:  
THL

**XC102K**  
DRAWING NO.