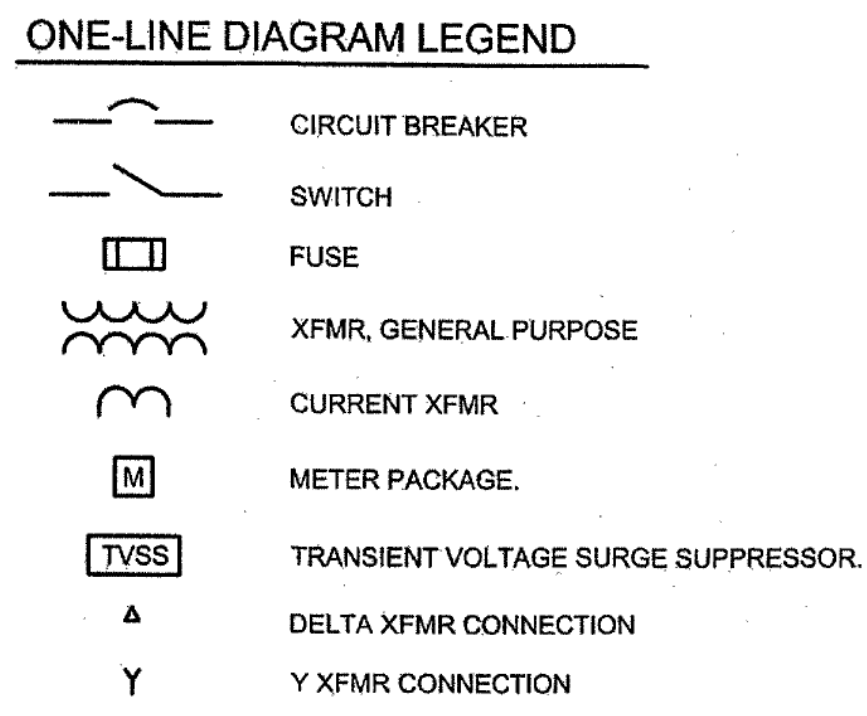
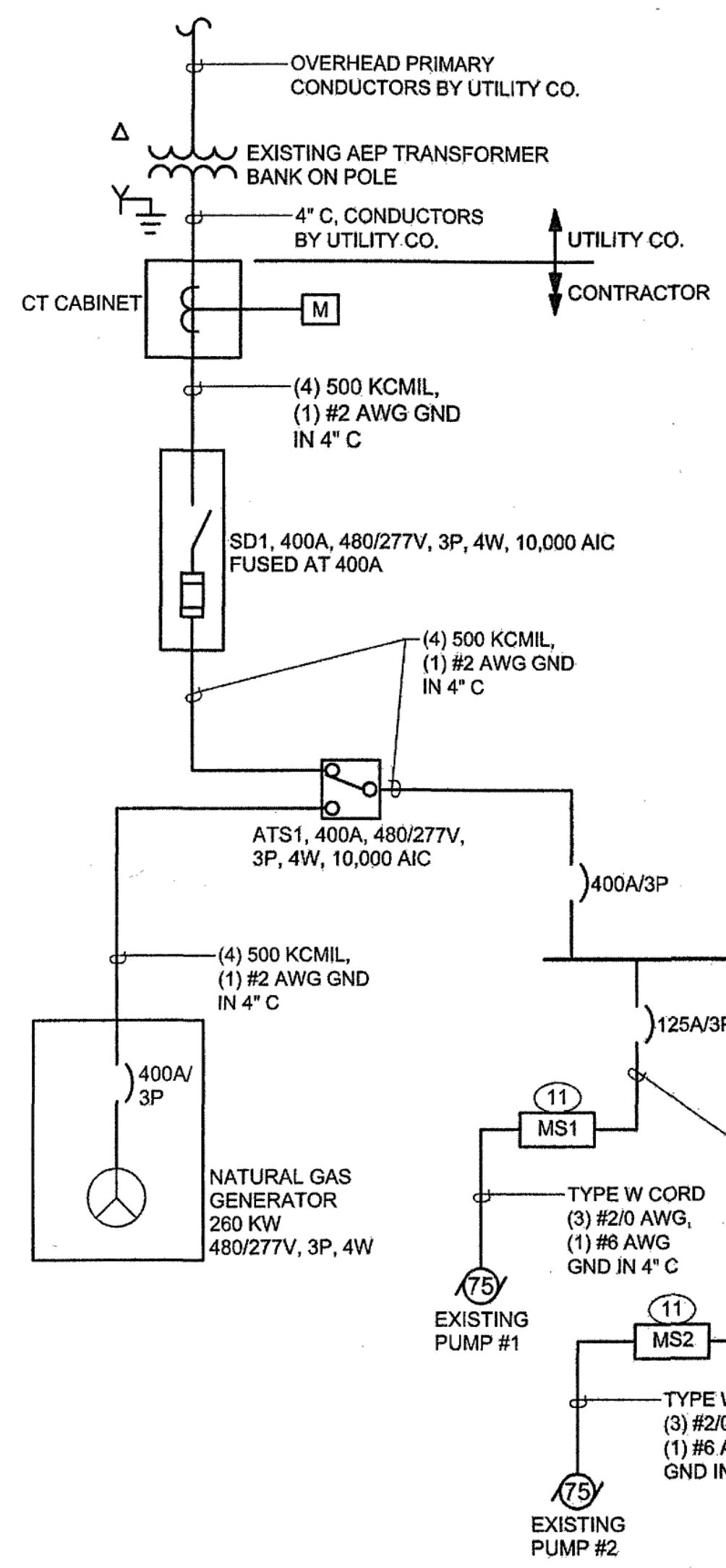


PAW/FILENAME: \\A\PROJECTS\WATER\60153682\000\CAO\DWG\ES101.DWG
LAST UPDATE: Friday, September 12, 2014 7:47:48 AM
PLOT DATE: Tuesday, September 16, 2014 4:05:19 PM
ARCH D - 12-Sep-14



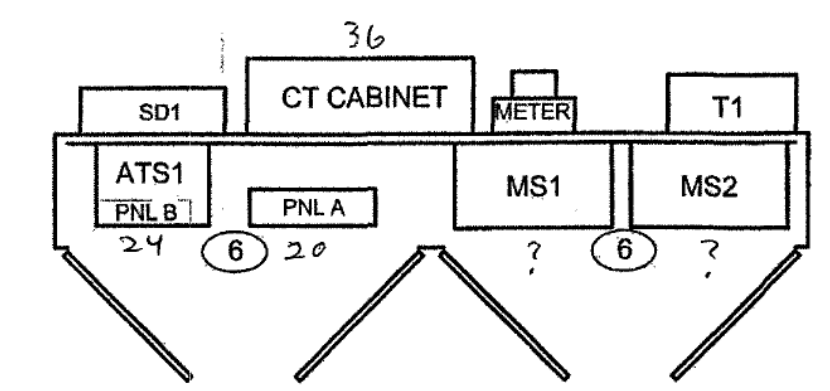
ONE-LINE DIAGRAM
NO SCALE

- GENERAL NOTES:**
- SEE CIVIL DRAWINGS FOR EXACT LOCATIONS OF EQUIPMENT.
 - PROVIDE DISCONNECT SWITCHES EVEN WHEN NOT INDICATED ON EQUIPMENT PER NEC.
 - PROVIDE GROUNDING CONDUCTORS AS REQUIRED PER NEC.
 - PROVIDE PANELBOARD SCHEDULES ON AS-BUILT DRAWINGS AND PROVIDE PANEL DIRECTORIES TO REFLECT FINAL INSTALLATION CONDITIONS.
 - LOCATE ALL RACEWAYS TO AVOID INTERFERENCE WITH PIPES, MECHANICAL EQUIPMENT, OR WITH ACCESS TO EQUIPMENT WHICH REQUIRES PERIODIC ADJUSTMENT OR MAINTENANCE.
 - PROVIDE NAMEPLATES ON THE EXTERIOR OF ALL ELECTRICAL PANELS AND ENCLOSURES AS FOLLOWS:

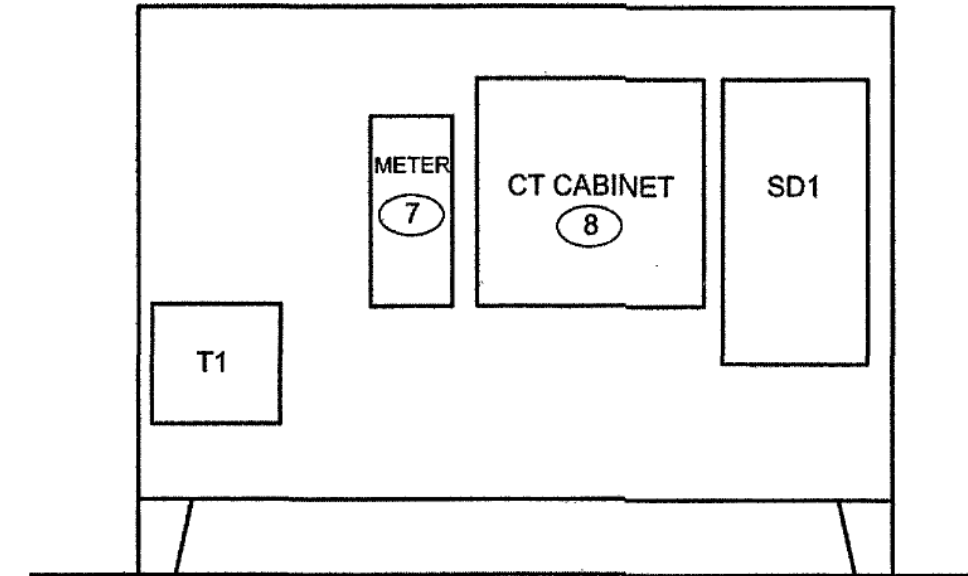
LINE 1: DEVICE ID
LINE 2: DEVICE RATING
LINE 3: POWER SOURCE
LINE 4: INSTALLATION DATE

PANEL LP1
100A, 120/208V-3Ø, 4W
FEEDS FROM PANEL MDP
INSTALLED: 1997
 - ALL CONDUIT SHALL BE CONCEALED WHERE POSSIBLE.
 - EXISTING CONTROL PANEL SHALL BE REMOVED AFTER NEW CONTROL PANELS ARE OPERATIONAL. REMOVE ALL CONDUITS AND WIRING ASSOCIATED WITH THE EXISTING CONTROL PANEL.
 - PROVIDE NEMA 4X TYPE ENCLOSURES FOR ALL ELECTRICAL EQUIPMENT MOUNTED ON EXTERIOR OF ENCLOSURES.
 - SEE SHEET G003 & G004 FOR ELECTRICAL SPECIFICATIONS.

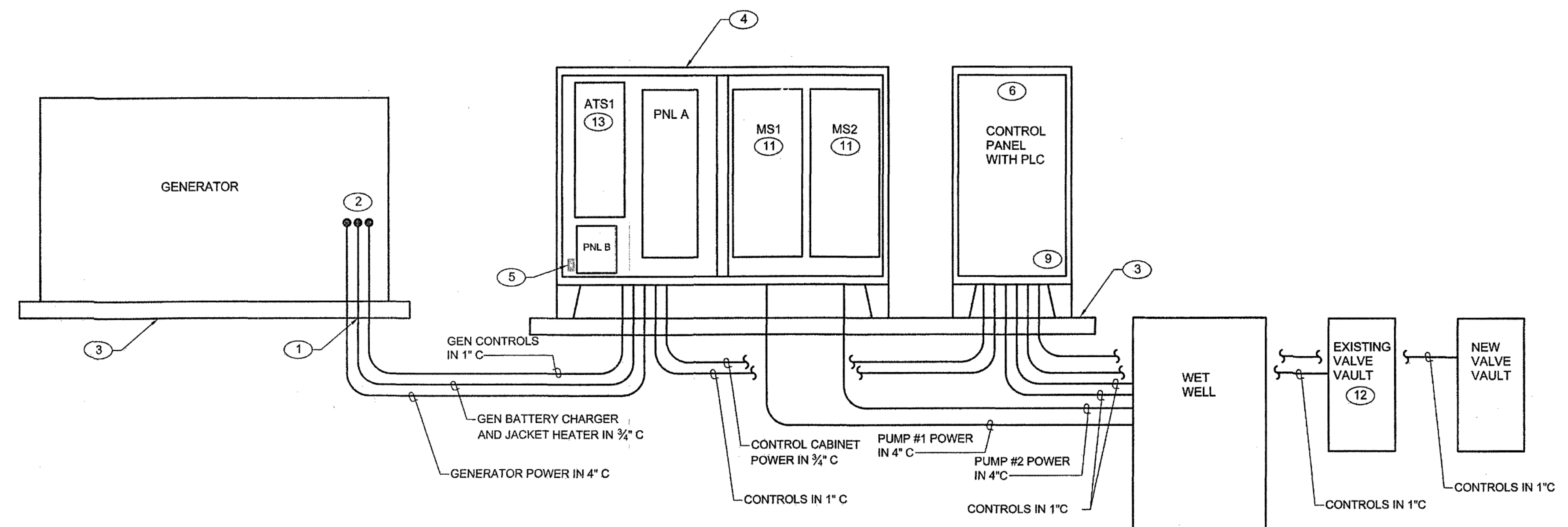
- SHEET KEYNOTES:**
- COORDINATE LOCATION OF CONDUIT STUB-UPS WITH GENERATOR PROVIDED.
 - PROVIDE FLEXIBLE CONDUIT CONNECTIONS TO GENERATOR.
 - PROVIDE CONCRETE SLAB FOR GENERATOR AND CABINETS. ACTUAL SIZE SHALL BE 6" LARGER THAN EQUIPMENT PROVIDED ON ALL SIDES. SEE SH CS501 FOR DETAIL.
 - PROVIDE STAINLESS STEEL ENCLOSURE TO HOUSE ALL EQUIPMENT SHOWN. PROVIDE A PANEL MOUNTED HVAC UNIT LARGE ENOUGH TO HANDLE THE HEAT LOAD. ALL EQUIPMENT SHALL BE INSTALLED TO MEET THE NEC.
 - PROVIDE GFCI TYPE RECEPTACLE ON INSIDE OF ENCLOSURE IN A READILY ACCESSIBLE LOCATION.
 - PROVIDE A FLUORESCENT STRIP LIGHTING FIXTURE INSIDE CONTROL PANEL AND EQUIPMENT ENCLOSURE. LOCATE LIGHT SWITCH ON INSIDE OF ENCLOSURE IN A READILY ACCESSIBLE LOCATION.
 - PROVIDE A NEMA 4X TYPE METER ENCLOSURE.
 - PROVIDE A 36"W x 36"H x 12"D NEMA 4X TYPE ENCLOSURE.
 - PROVIDE A TELEPHONE OUTLET IN THE CONTROL PANEL. COORDINATE WITH TELEPHONE UTILITY COMPANY. PANEL FOR TELEPHONE SERVICE WIRING BY UTILITY. PROVIDE TELEPHONE WIRING FROM OUTLET TO SERVICE POINT. PROVIDE 1-1/2" CONDUIT FROM UTILITY POLE TO CONTROL PANEL FOR TELEPHONE SERVICE WIRING BY UTILITY.
 - PROVIDE PANELBOARD CAPABLE OF HAVING 125A/3P BREAKERS CHANGED TO 200A/3P BREAKERS FOR FUTURE PUMP UPGRADE.
 - SIZE SOLID STATE - REDUCE VOLTAGE MOTOR STARTERS FOR FUTURE PUMP UPGRADE TO 100 HP MOTORS.
 - PROVIDE CONTROL WIRING AS REQUIRED FOR INSTALLATION OF PROXIMITY SWITCHES.
 - TRANSFER SWITCH SHALL BE CAPABLE OF SENDING A SIGNAL TO THE OWNER'S SCADA SYSTEM TO INDICATE LOSS OF PRIMARY POWER AND LOSS OF AUXILIARY POWER.



TOP VIEW



REAR VIEW



FRONT VIEW

ELEVATION OF LIFT STATION
NO SCALE

RENOVATION OF CLEARBROOK LIFT STATION

ELECTRICAL PLAN AND DETAILS

PROJECT NO:	60153682.0001
CAD DWG FILE:	_ES101
DESIGNED BY:	RGL
DRAWN BY:	RGL
DEPT CHECK:	KMS
PROJ CHECK:	DMH
DATE:	SEPT. 17, 2014
SCALE:	NONE
E001	

AECOM
1315 FRANKLIN ROAD
FARMINGTON, CT 06030
(860) 657-3100

COMMONWEALTH OF VIRGINIA
REGISTERED PROFESSIONAL ENGINEER
KEITH N. SARVER
Lic. No. 36283
9/17/14