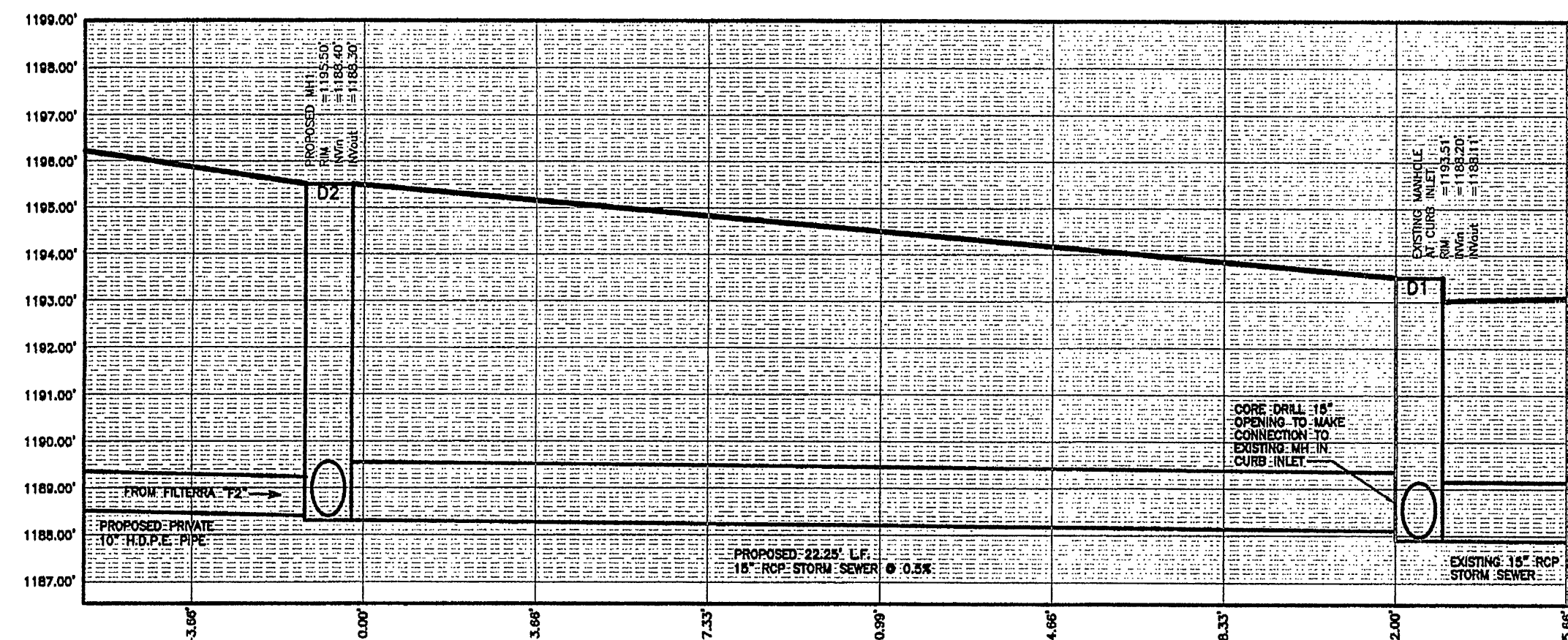
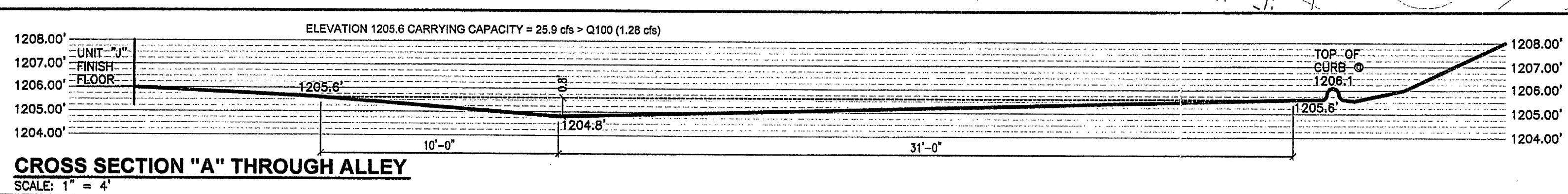


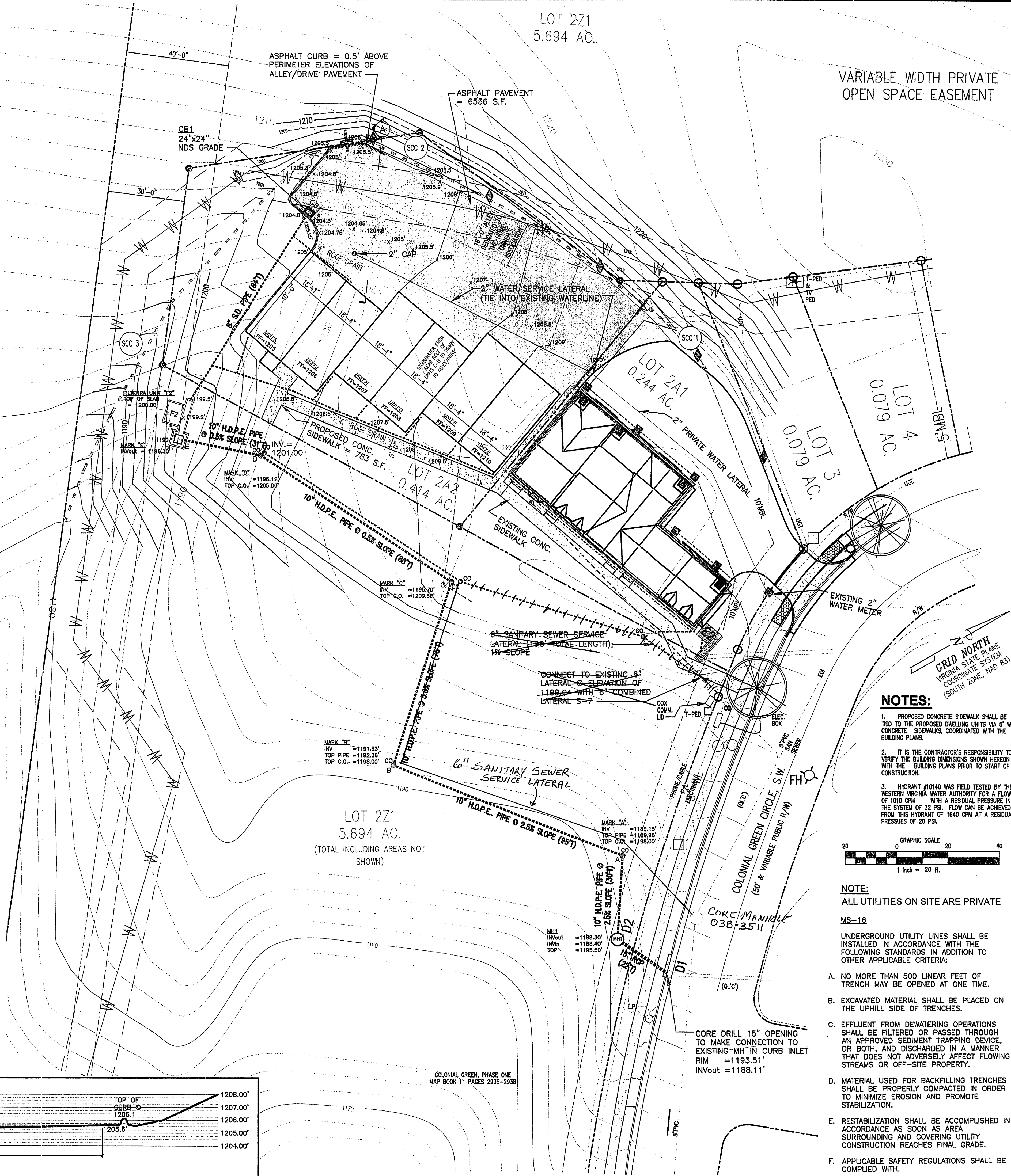
**STORM WATER MANAGEMENT MAINTENANCE ACCESS EASEMENT**



**NEW MANHOLE TO EXISTING MANHOLE CONNECTION DETAIL**



**CROSS SECTION "A" THROUGH ALLEY**



**NOTES:**

1. PROPOSED CONCRETE SIDEWALK SHALL BE TIED TO THE PROPOSED DWELLING UNITS VIA 6" WIDE CONCRETE SIDEWALKS, COORDINATED WITH THE BUILDING PLANS.
2. IT IS THE CONTRACTOR'S RESPONSIBILITY TO VERIFY THE BUILDING DIMENSIONS SHOWN HEREON WITH THE BUILDING PLANS PRIOR TO START OF CONSTRUCTION.
3. HYDRANT #10140 WAS FIELD TESTED BY THE WESTERN VIRGINIA WATER AUTHORITY FOR A FLOW OF 1010 GPM WITH A RESIDUAL PRESSURE IN THE SYSTEM OF 32 PSIG. A FLOW CAN BE ACHIEVED FROM THIS HYDRANT OF 1640 GPM AT A RESIDUAL PRESSURE OF 20 PSI.

**NOTE:**

ALL UTILITIES ON SITE ARE PRIVATE

**MS-16**

- UNDERGROUND UTILITY LINES SHALL BE INSTALLED IN ACCORDANCE WITH THE FOLLOWING STANDARDS IN ADDITION TO OTHER APPLICABLE CRITERIA:
- A. NO MORE THAN 500 LINEAR FEET OF TRENCH MAY BE OPENED AT ONE TIME.
  - B. EXCAVATED MATERIAL SHALL BE PLACED ON THE UPHILL SIDE OF TRENCHES.
  - C. EFFLUENT FROM DEWATERING OPERATIONS SHALL BE FILTERED OR PASSED THROUGH AN APPROVED SEDIMENT TRAPPING DEVICE, OR BOTH, AND DISCHARGED IN A MANNER THAT DOES NOT ADVERSELY AFFECT FLOWING STREAMS OR OFF-SITE PROPERTY.
  - D. MATERIAL USED FOR BACKFILLING TRENCHES SHALL BE PROPERLY COMPACTED IN ORDER TO MINIMIZE EROSION AND PROMOTE STABILIZATION.
  - E. RESTABILIZATION SHALL BE ACCOMPLISHED IN ACCORDANCE AS SOON AS AREA SURROUNDING AND COVERING UTILITY CONSTRUCTION REACHES FINAL GRADE.
  - F. APPLICABLE SAFETY REGULATIONS SHALL BE COMPLIED WITH.