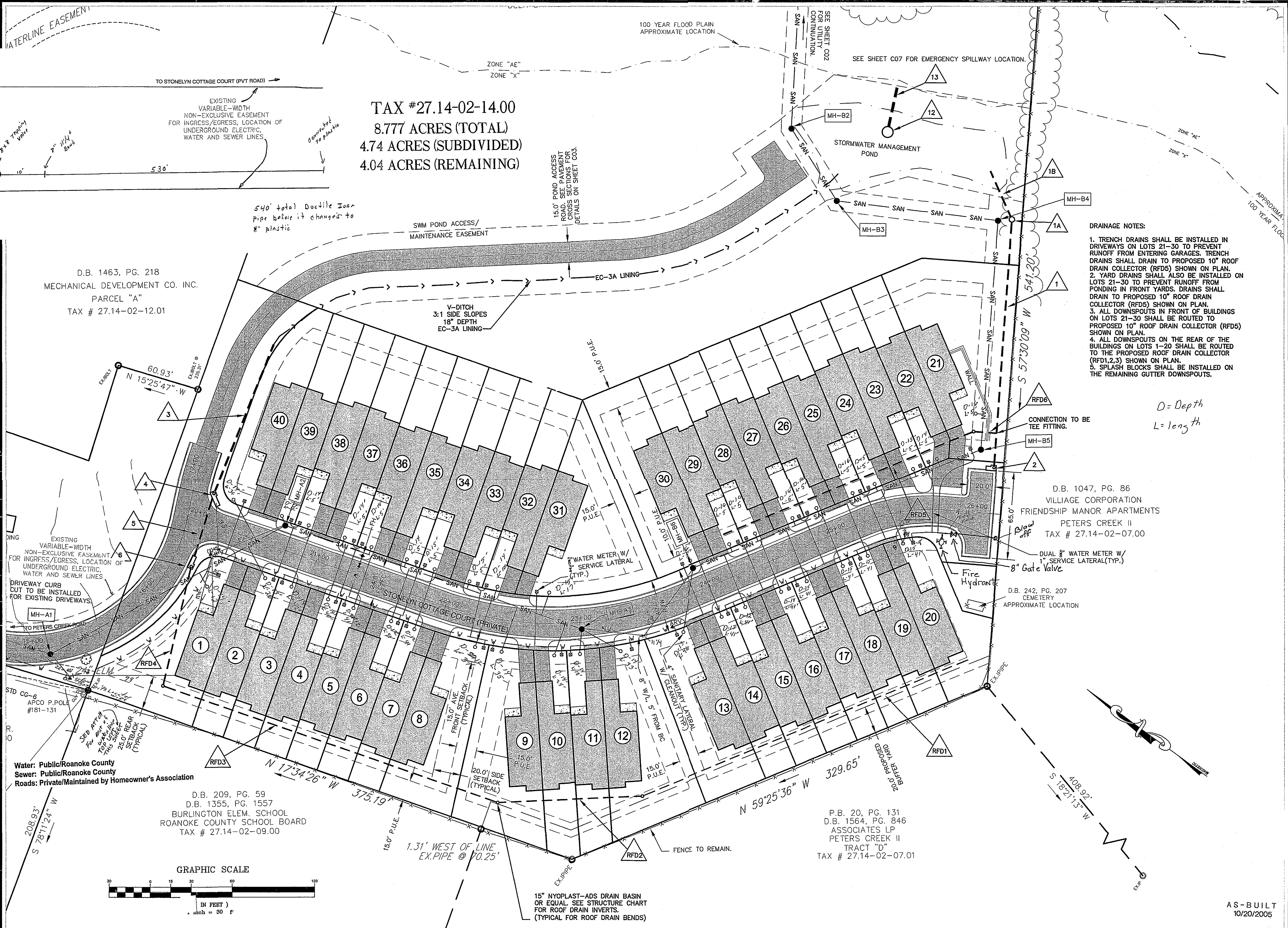


PETERS CREEK RD.



TAX #27.14-02-14.00
8.777 ACRES (TOTAL)
4.74 ACRES (SUBDIVIDED)
4.04 ACRES (REMAINING)

- DRAINAGE NOTES:**
1. TRENCH DRAINS SHALL BE INSTALLED IN DRIVEWAYS ON LOTS 21-30 TO PREVENT RUNOFF FROM ENTERING GARAGES. TRENCH DRAINS SHALL DRAIN TO PROPOSED 10" ROOF DRAIN COLLECTOR (RFD5) SHOWN ON PLAN.
 2. YARD DRAINS SHALL ALSO BE INSTALLED ON LOTS 21-30 TO PREVENT RUNOFF FROM PONDING IN FRONT YARDS. DRAINS SHALL DRAIN TO PROPOSED 10" ROOF DRAIN COLLECTOR (RFD5) SHOWN ON PLAN.
 3. ALL DOWNSPOUTS IN FRONT OF BUILDINGS ON LOTS 21-30 SHALL BE ROUTED TO PROPOSED 10" ROOF DRAIN COLLECTOR (RFD5) SHOWN ON PLAN.
 4. ALL DOWNSPOUTS ON THE REAR OF THE BUILDINGS ON LOTS 1-20 SHALL BE ROUTED TO THE PROPOSED ROOF DRAIN COLLECTOR (RFD1,2,3) SHOWN ON PLAN.
 5. SPLASH BLOCKS SHALL BE INSTALLED ON THE REMAINING GUTTER DOWNSPOUTS.

D = Depth
L = Length

Barnes Grogan Bower & Taylor
DESIGN GROUP, PC
LANDSCAPE ARCHITECTS - ENGINEERS - PLANNERS
201 E. Main Street
Suite 100
Salem, Virginia 24153
Phone: 540.387.9100
Fax: 540.387.9101
www.bgbt-design.com



The Cottages at Stonelynn
Townhome Development
Prepared for Stonelynn, LLC
Hollins Magisterial District
Roanoke County, Virginia

REVISIONS:

1	VPOT, Roanoke County, & Client Comments	August 9, 2004
2	Roanoke County Comments	August 11, 2004
3	Lot 21-49 Property Line Adjustment	February 1, 2005

DESIGNED BY: SRB
DRAWN BY: SRB
CHECKED BY: GST
SCALE: 1"=30'
DATE: MAY 28, 2004

SHEET TITLE:
Site Dimensional & Utility Plan

C06
06 OF 15
PROJECT NUMBER:
S03060-02