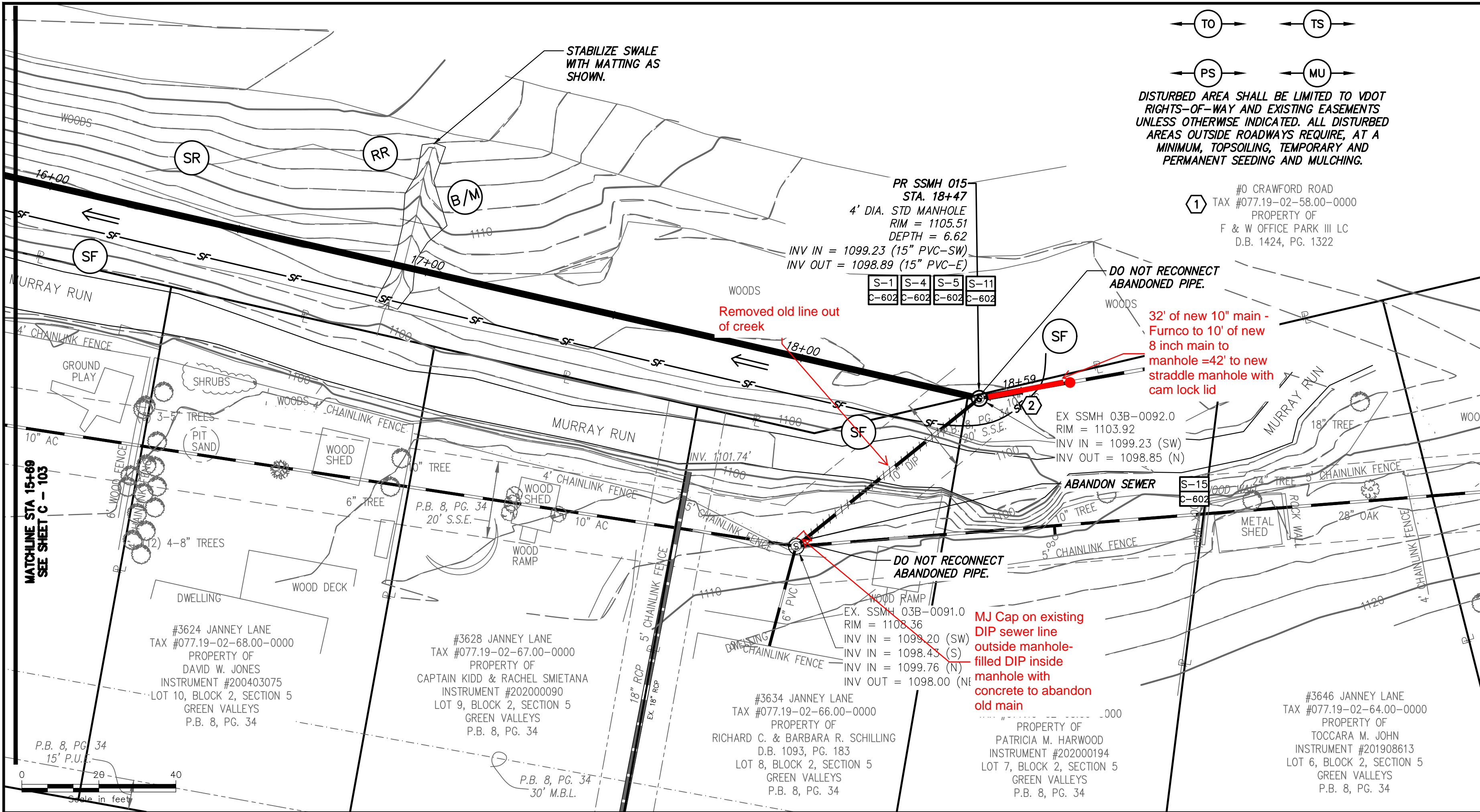
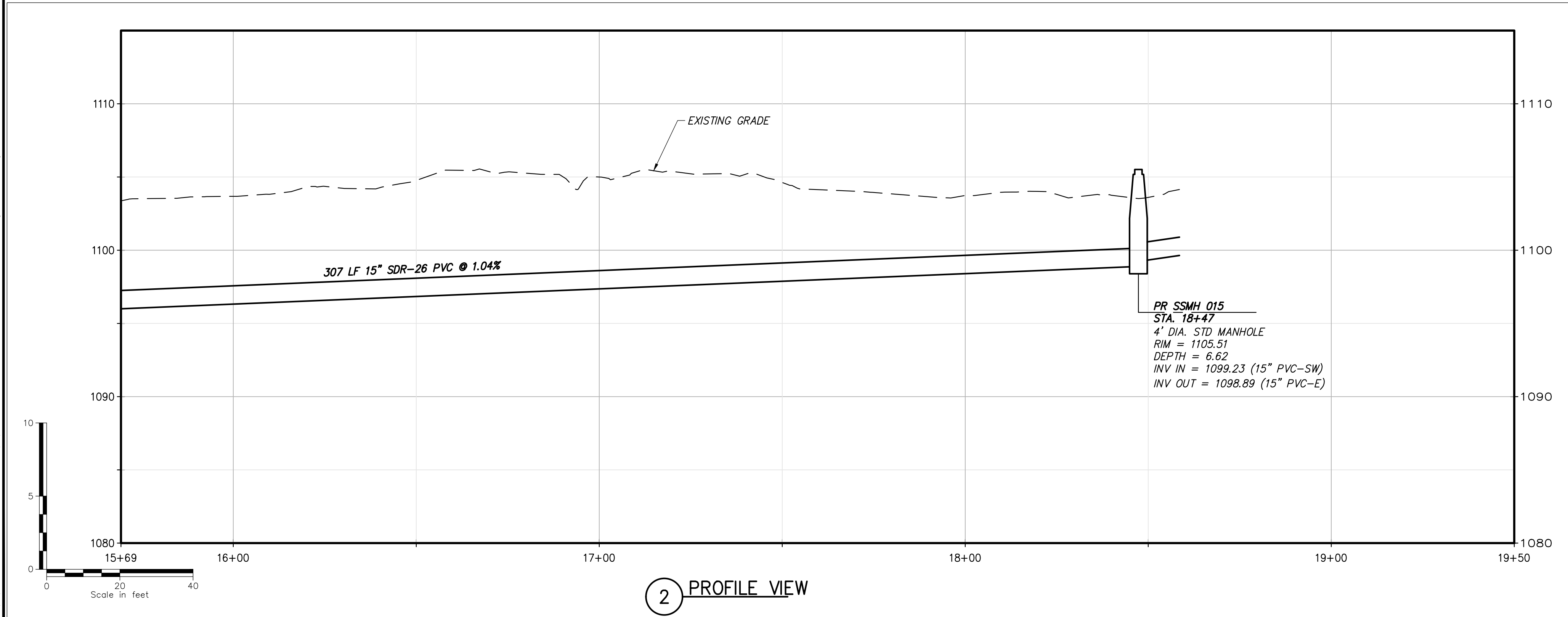


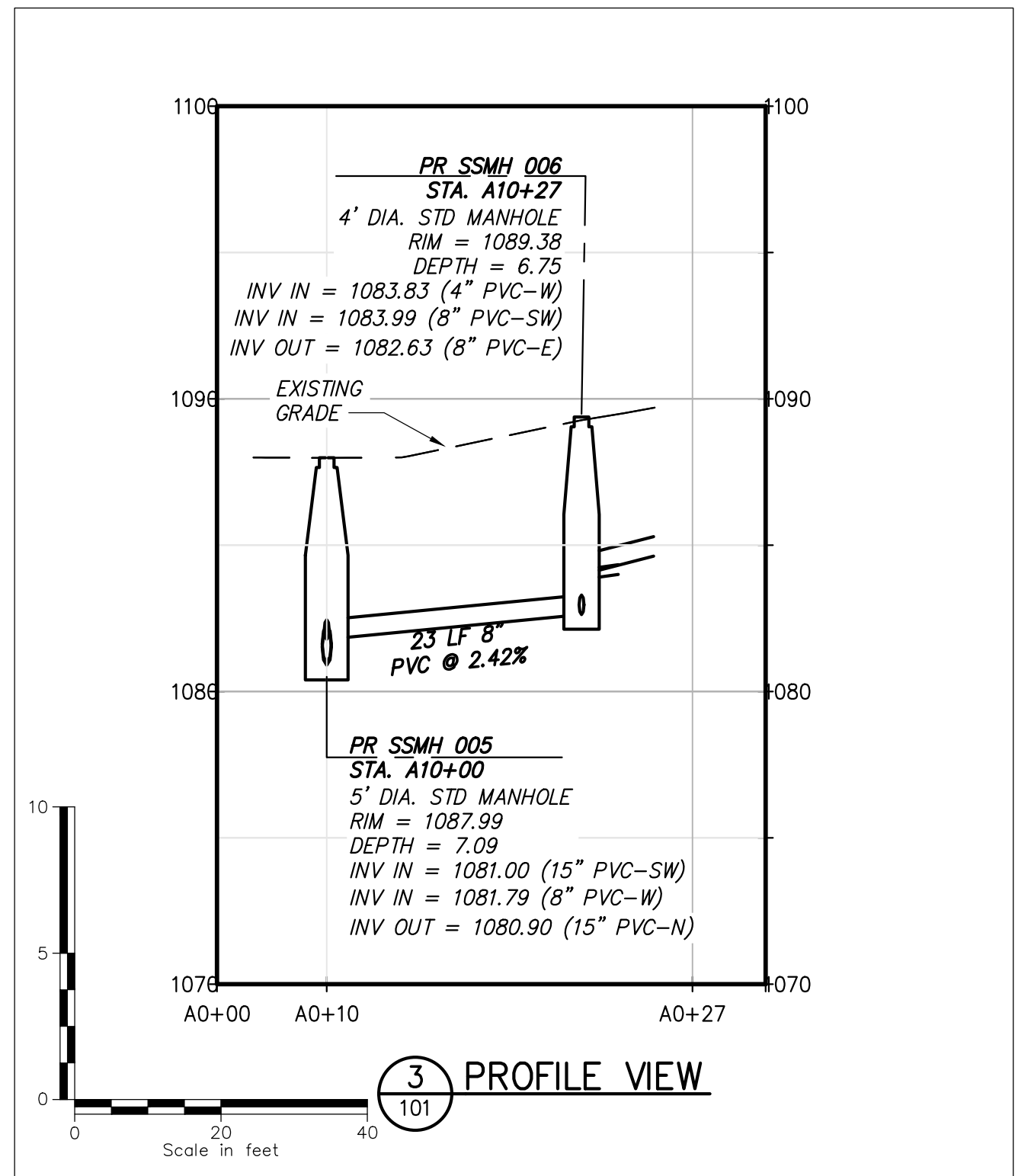
File: V:\PROJECTS\AN\Y\6\072986.000\09_DESIGN\DRAWINGS\01_SHEETS\C-104_72986.DWG
Saved: 11/09/2022 12:38:16 AM Plotted: 11/09/2022 3:28:25 PM Current User: Shah, Chag Last Saved By: 7257



1 PLAN VIEW



2 PROFILE VIEW



3 PROFILE VIEW

Red line is new location of new sewer Main

ALL NEW SEWER IS 18" - MANHOLES 60"

UNLESS OTHERWISE NOTED

- SHEET KEYNOTES:
1. PROPERTY RECENTLY ACQUIRED BY THE WESTERN VIRGINIA WATER AUTHORITY. LIMIT DISTURBANCE TO 30' MAX. WIDTH CENTERED ON THE PROPOSED SANITARY SEWER OR LESS.
 2. REPLACE 10' (APPROX.) OF EXISTING SEWER WITH 15" SDR-26 PVC PIPE (4' MIN.), SDR-26 GASKETED PVC ECCENTRIC REDUCER SIZED TO ACCOMMODATE NEW PIPE AND EXISTING PIPE, 1' MIN. OF SDR-26 PVC PIPE SIZED TO ACCOMMODATE EXISTING SEWER, AND FLEXIBLE RUBBER COUPLING PER THE JOINING DISSIMILAR PIPE DETAIL.

Drawing Copyright © 2022

CHA

1341 Research Center Drive, Suite 2100
Blacksburg, VA 24060-5548
540.552.5548 • www.chacompanies.com

WESTERN VIRGINIA
WATER AUTHORITY

COMMONWEALTH OF VIRGINIA

DOUGLAS B. HUGHINS

Lic. No. 034694

11/09/2022

PROFESSIONAL ENGINEER

IT IS A VIOLATION OF LAW FOR ANY PERSON, UNLESS THEY ARE ACTING UNDER THE DIRECTION OF A LICENSED PROFESSIONAL ENGINEER, ARCHITECT, LANDSCAPE ARCHITECT, OR LAND SURVEYOR TO ALTER AN ITEM IN ANY WAY. IF AN ITEM BEARING THE STAMP OF A LICENSED PROFESSIONAL IS ALTERED, THE ALTERING ENGINEER, ARCHITECT, LANDSCAPE ARCHITECT OR LAND SURVEYOR SHALL STAMP THE DOCUMENT AND INCLUDE THE NOTATION "ALTERED BY" FOLLOWED BY THEIR SIGNATURE, THE DATE OF SUCH ALTERATION, AND A SPECIFIC DESCRIPTION OF THE ALTERATION.

WESTERN VIRGINIA
WATER AUTHORITY

CRAWFORD JANNEY
SANITARY SEWER
REPLACEMENT

No.	Submittal / Revision	App'd	By	Date

BID ISSUE

DBH

CCS

11/09/22

PLAN AND PROFILE
STA 15+69 To STA
19+50

Designed By: CCS	Drawn By: CCS/AW	Checked By: DBH
Issue Date: 11/09/2022	Project No: 072986.000	Scale: AS SHOWN

Drawing No.:
C-104