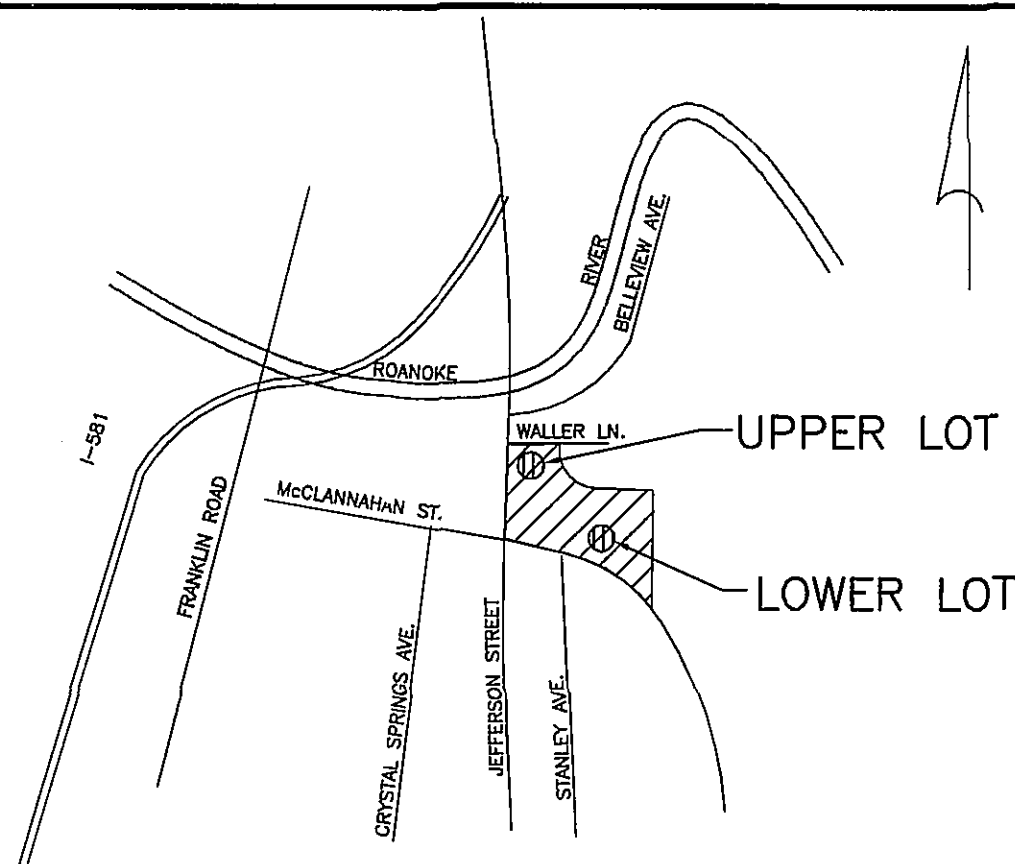


PROJECT LOCATION MAP



ROANOKE CITY CONSTRUCTION NOTES

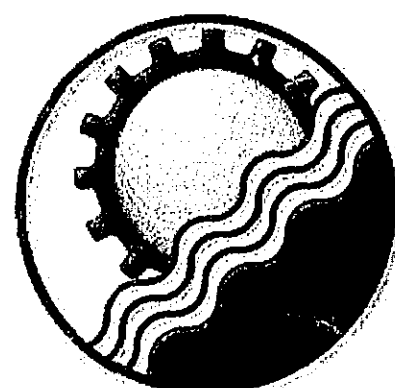
NOTICE: ALL LANDOWNERS, DEVELOPERS AND CONTRACTORS

FAILURE TO COMPLY WITH THE CONSTRUCTION PROCEDURE REQUIREMENTS LISTED BELOW MAY RESULT IN THE COSTLY REMOVAL OF STRUCTURES, TIME DELAYS OR THE ISSUANCE OF A STOP WORK ORDER.

CONSTRUCTION PROCEDURE REQUIREMENTS

1. CITY INSPECTIONS - TO ENSURE THE COORDINATION OF TIMELY AND PROPER INSPECTIONS, A PRE-CONSTRUCTION CONFERENCE SHALL BE INITIATED BY THE APPLICANT, BUILDER, ETC. WITH THE DEVELOPMENT INSPECTOR. CALL (540)853-1227 TO ARRANGE A CONFERENCE AT LEAST THREE (3) DAYS PRIOR TO ANTICIPATED CONSTRUCTION.
2. RIGHT-OF-WAY EXCAVATION PERMIT - PRIOR TO THE COMMENCEMENT OF ANY DIGGING, ALTERATION OR CONSTRUCTION WITHIN THE PUBLIC RIGHT-OF-WAY (STREET, ALLEYS, PUBLIC EASEMENTS), A RIGHT-OF-WAY EXCAVATION PERMIT SHALL BE APPLIED FOR AND OBTAINED BY THE CONTRACTOR FROM THE CITY OF ROANOKE.
3. LAND DISTURBANCE PERMIT - AN APPROVED EROSION AND SEDIMENT CONTROL PLAN FOR ANY BORROW/FILL SITES ASSOCIATED WITH THE PROJECT MUST BE SUBMITTED PRIOR TO THE ISSUANCE OF A LAND DISTURBANCE PERMIT.
4. PLANS AND PERMITS- A COPY OF THE PLANS AS APPROVED BY THE CITY (SIGNED BY THE PROPER CITY OFFICIALS) AND ALL PERMITS ISSUED BY THE CITY SHALL BE AVAILABLE AT THE CONSTRUCTION SITE AT ALL TIMES OF ONGOING CONSTRUCTION.
5. LOCATION OF UTILITIES - THE CONTRACTOR SHALL VERIFY THE LOCATION OF ALL EXISTING UTILITIES PRIOR TO THE COMMENCEMENT OF ANY CONSTRUCTION.
6. CONSTRUCTION ENTRANCE - THE CONTRACTOR SHALL INSTALL AN ADEQUATE CONSTRUCTION ENTRANCE FOR ALL CONSTRUCTION RELATED EGRESS FOR THE SITE. SIZE AND COMPOSITION OF CONSTRUCTION ENTRANCE SHALL BE AS SHOWN ON THE PLANS.
7. STREETS TO REMAIN CLEAN - IT SHALL BE THE RESPONSIBILITY OF THE CONTRACTOR TO ENSURE THAT THE PUBLIC STREET ADJACENT TO THE CONSTRUCTION ENTRANCE REMAINS FREE OF MUD, DIRT, DUST, AND/OR ANY TYPE OF CONSTRUCTION MATERIALS OR LITTER AT ALL TIMES.
8. BARRICADES/DITCHES - THE CONTRACTOR SHALL MAINTAIN THE INTEGRITY OF ALL EXCAVATED DITCHES AND SHALL FURNISH AND ENSURE THAT ALL BARRICADES PROPER AND NECESSARY FOR THE SAFETY OF THE PUBLIC ARE IN PLACE.
9. SEWER AND PAVEMENT REPLACEMENT - CONSTRUCTION OF SANITARY SEWERS AND THE REPLACEMENT OF PAVEMENT SHALL BE IN ACCORDANCE WITH APPROVED STANDARDS AND SPECIFICATIONS OF THE CITY OF ROANOKE AND THE WESTERN VIRGINIA WATER AUTHORITY.
10. APPROVED PLANS/CONSTRUCTION CHANGES - ANY CHANGE OR VARIATION FROM CONSTRUCTION DESIGN AS SHOWN ON THE OFFICIALLY APPROVED PLANS SHALL BE APPROVED BY EROSION AND SEDIMENT CONTROL AGENT PRIOR TO SAID CHANGES OR VARIATION IN CONSTRUCTION BEING MADE.
11. FINAL ACCEPTANCE/CITY - THE OWNER OR DEVELOPER SHALL FURNISH THE CITY OF ROANOKE'S PLANNING BUILDING AND DEVELOPMENT DEPARTMENT WITH A FINAL CORRECT SET OF AS-BUILT PLANS PRIOR TO FINAL ACCEPTANCE BY THE CITY.

CONSULTING ENGINEERS

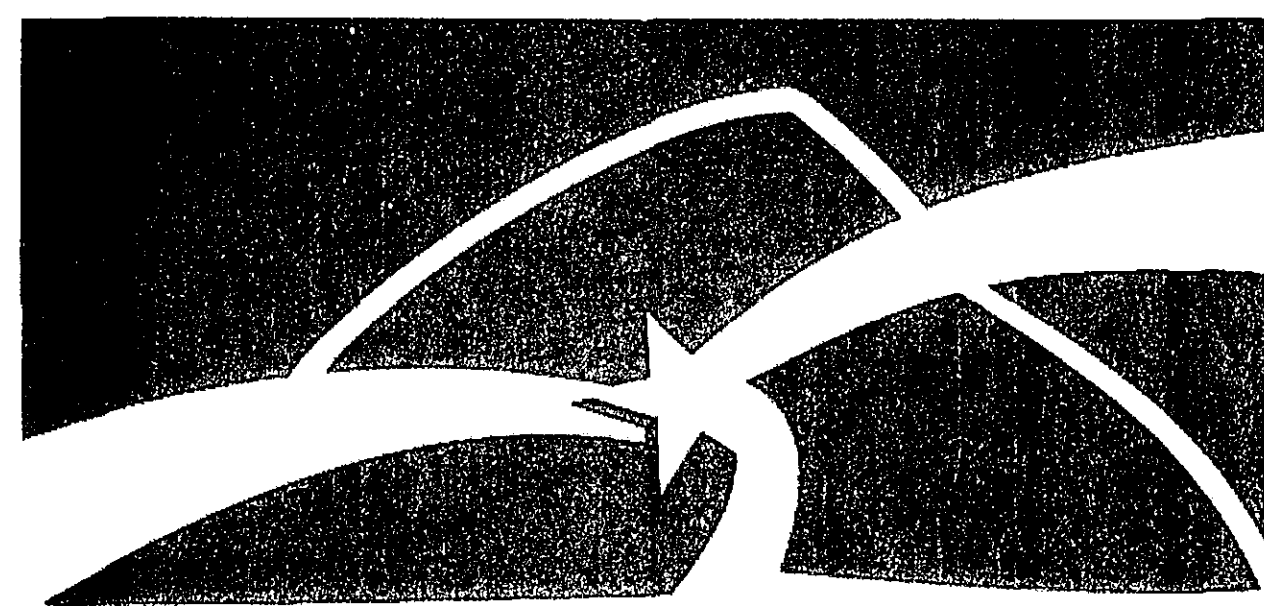
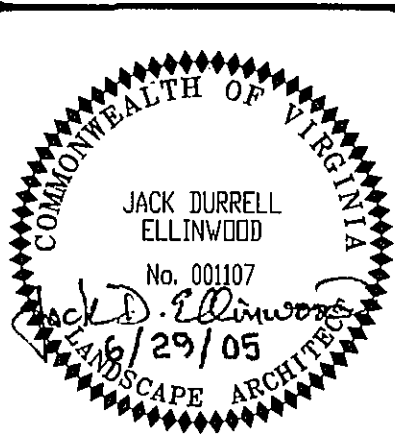


ENGINEERING
CONCEPTS, INC.

3433 BRAMBLETON AVENUE
SUITE 200B
ROANOKE, VIRGINIA 24018
540-776-5715, 540-776-8543 FAX

JUNE 29, 2005

COMMISSION NUMBER: 05052



ROANOKE

OFFICE OF CITY ENGINEER

ROOM 350

MUNICIPAL BUILDING

215 CHURCH AVENUE, S.W.

ROANOKE, VIRGINIA 24011

PROJECT NAME

CRYSTAL SPRING PARKING LOT EXPANSION
Western Virginia Water Authority
Parking Lot Expansions

2012 South Jefferson Street

PROJECT NUMBER: _____

REVISION BY	DESCRIPTION:	DATE
REVISION BY	DESCRIPTION:	DATE
REVISION BY	DESCRIPTION:	DATE
REVISION BY	DESCRIPTION:	DATE

INDEX OF SHEETS

UPPER PARKING LOT SHEET INDEX

- 1 COVER SHEET
- 2 NOTES AND CALCULATIONS
- 3 OVERALL & PARKING LOT DETAIL PLAN
- 4 DEMOLITION AND DETAILS
- 5 SITE DIMENSIONAL AND LANDSCAPE PLAN
- 6 GRADING AND EROSION CONTROL PLAN
- 7 EROSION CONTROL DETAILS

LOWER PARKING LOT SHEET INDEX

- 1 COVER SHEET
- 2 DRAINAGE CALCULATIONS
- 3 NOTES AND OVERALL PLAN
- 4 DEMOLITION AND DETAILS
- 5 SITE DIMENSIONAL AND LANDSCAPE PLAN
- 6 GRADING AND EROSION CONTROL PLAN
- 7 EROSION CONTROL DETAILS
- 8 RAIN GARDEN PLAN
- 9 RAIN GARDEN LANDSCAPE PLAN & PROFILES

APPROVED FOR CONSTRUCTION

ROANOKE CITY ENGINEER

DATE

DIRECTOR OF PUBLIC WORKS

DATE

ASSIST. CITY MANAGER FOR OPERATIONS

DATE

DATE

DATE

ADVERTISED DATE: _____

SET NUMBER: _____

SHEET NUMBER: 1 OF 17