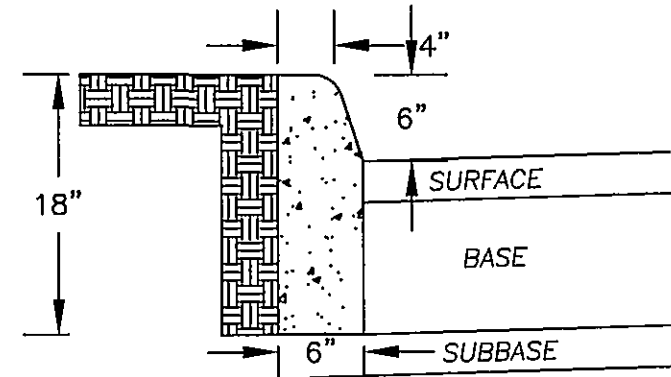


NOTE:  
 1. THE PAVEMENT DESIGNS SHOWN ARE BASED ON A SUBGRADE RATING OF CBR 10 OR GREATER. THE SUBGRADE SOIL IS TO BE TESTED BY A GEOTECHNICAL ENGINEER AND THE RESULTS SUBMITTED TO THE ENGINEER PRIOR TO PAVEMENT CONSTRUCTION. SHOULD THE CBR VALUES BE LESS THAN CBR 10, THEN ADDITIONAL BASE MATERIAL AND/OR ASPHALT WILL BE REQUIRED AS RECOMMENDED BY THE GEOTECHNICAL ENGINEER.  
 2. THE SUBGRADE MUST BE APPROVED BY THE GEOTECHNICAL ENGINEER PRIOR TO PLACEMENT OF BASE MATERIAL. BASE MUST BE APPROVED BY THE ENGINEER FOR DEPTH, TEMPLATE, AND COMPACTION BEFORE SURFACE IS APPLIED.

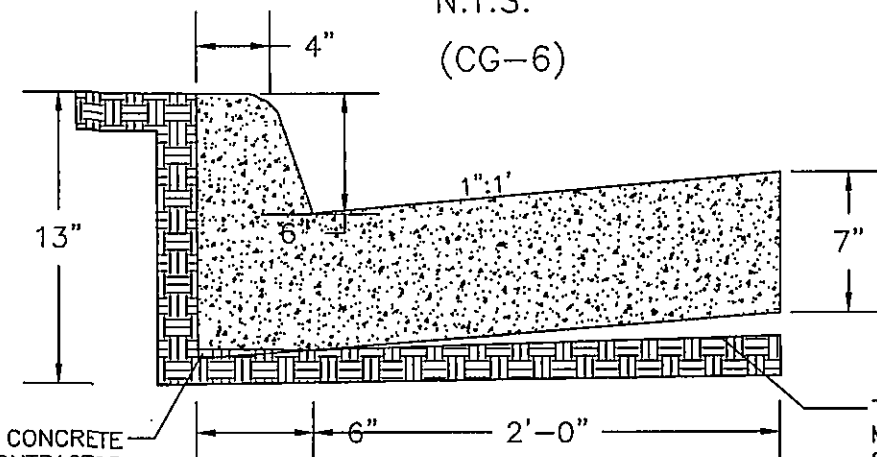


THIS ITEM SHALL BE CAST IN PLACE. CONCRETE TO BE VDOT CLASS A3.  
 THE DEPTH OF CURB MAY BE REDUCED AS MUCH AS 3" (15" DEPTH) OR INCREASED AS MUCH AS 3" (21" DEPTH) IN ORDER THAT THE BOTTOM OF CURB WILL COINCIDE WITH THE TOP OF A COURSE OF THE PAVEMENT SUBSTRUCTURE. OTHERWISE, THE DEPTH IS TO BE 18" AS SHOWN. NO ADJUSTMENT IN THE PRICE BID IS TO BE MADE FOR A DECREASE OR INCREASE IN DEPTH.

CG-2 CURB  
 NOT TO SCALE

COMBINATION 6" CURB & GUTTER

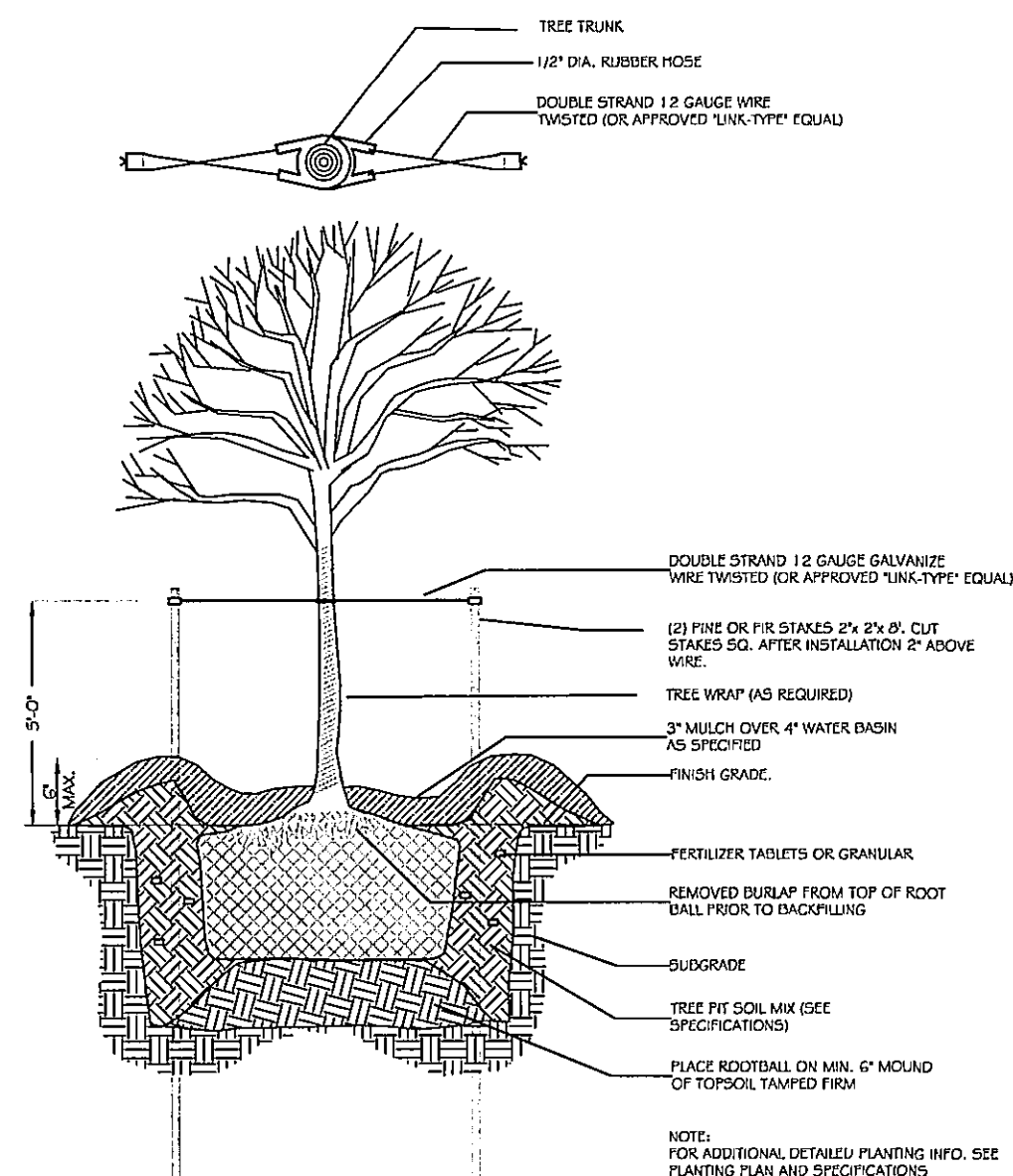
N.T.S.  
 (CG-6)



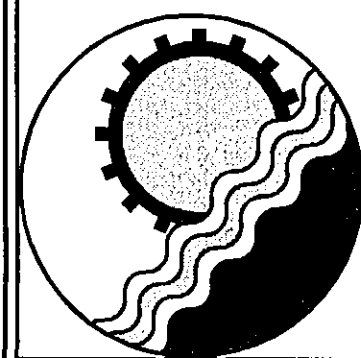
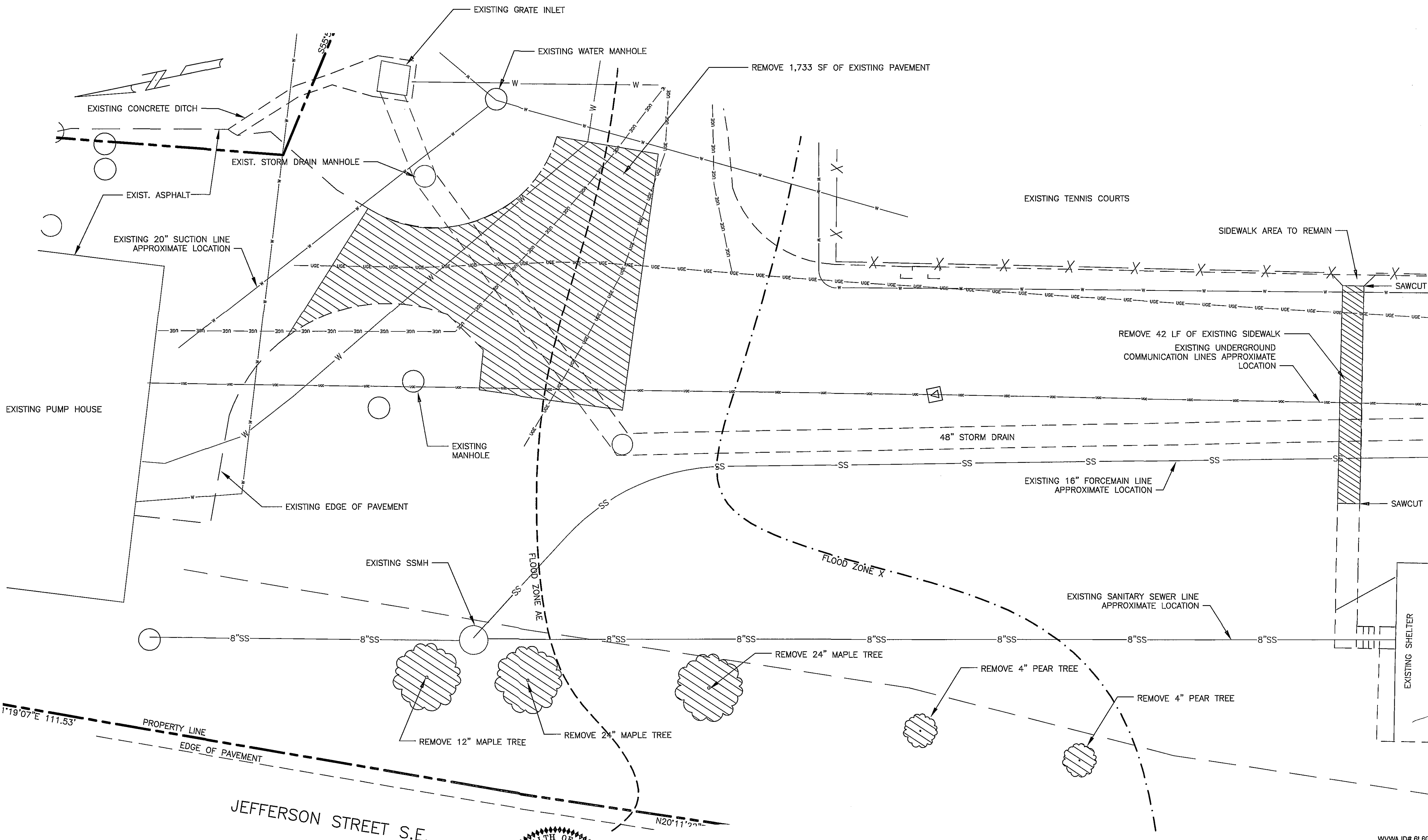
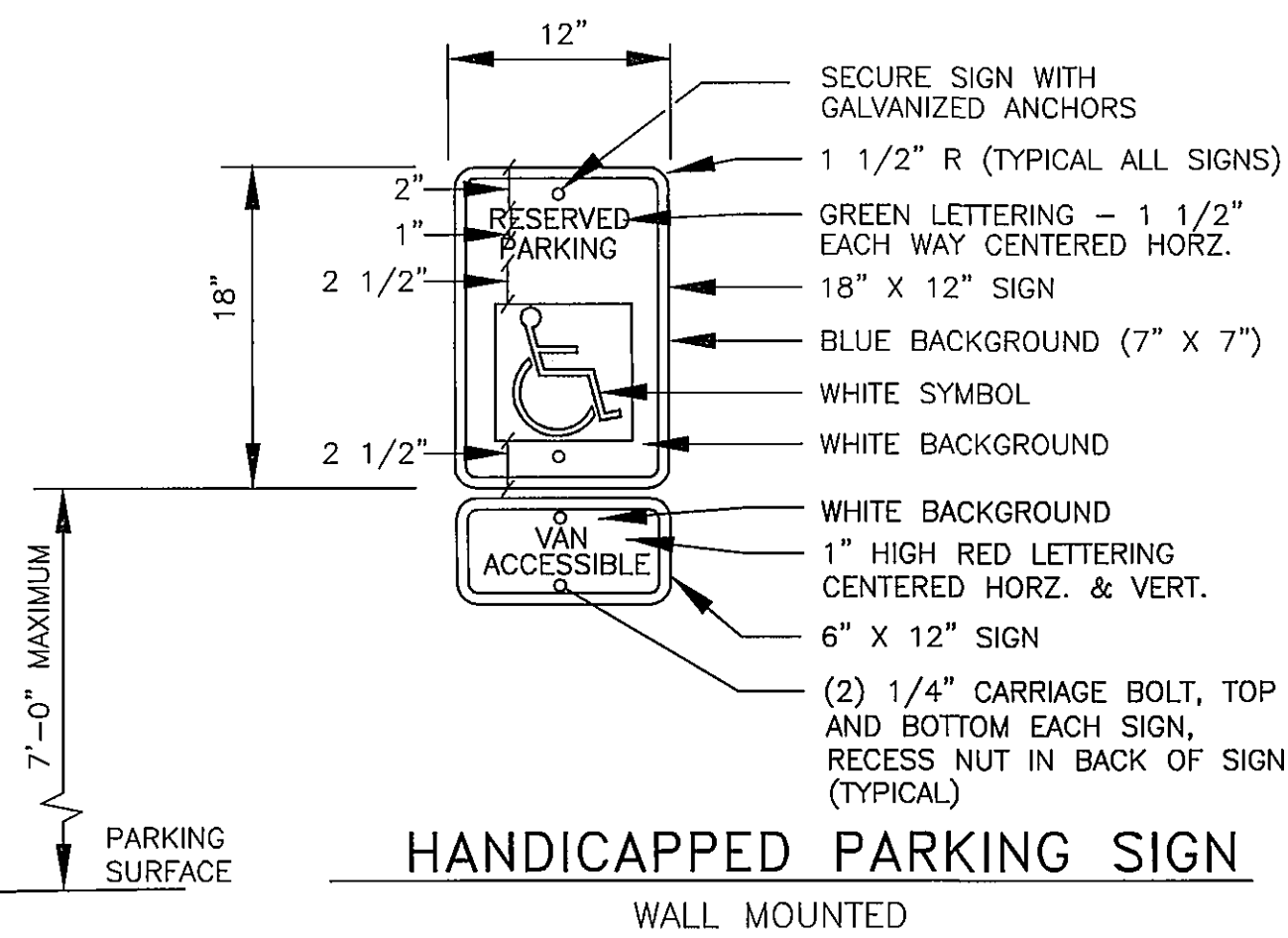
THIS AREA MAY BE CONCRETE AT THE OPTION OF THE CONTRACTOR

THE BOTTOM OF THE CURB AND GUTTER MAY BE CONSTRUCTED PARALLEL TO THE SLOPE OF SUBSURFACE COURSE PROVIDED A MINIMUM DEPTH OF 7" IS MAINTAINED.

DEMOLITION NOTE:  
 1. SAW CUT EDGE OF EXISTING PAVEMENT TO PROVIDE A SMOOTH TRANSITION FROM EXISTING TO PROPOSED PAVEMENT.  
 2. FIELD VERIFY LOCATION OF UTILITIES WITHIN CONSTRUCTION AREA PRIOR TO CONSTRUCTION. RELOCATE LINES AS NECESSARY TO ACCOMMODATE THE WORK. COORDINATE ALL RELOCATIONS WITH THE APPROPRIATE UTILITY PROVIDER. PROVIDE A MINIMUM 72 HOURS NOTIFICATION PRIOR TO WORK.

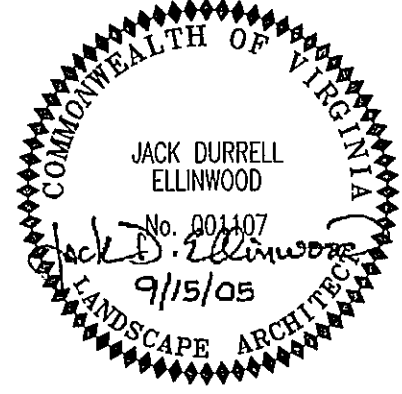


TYPICAL TREE PLANTING: WOOD STAKING  
 NOT TO SCALE



ENGINEERING CONCEPTS, INC.

3433 BRAMBLETON AVENUE, SUITE 200B  
 ROANOKE, VIRGINIA 24018  
 540.776.5715 FAX: 540.776.8543



No.	Revision	By	Appd.	Date	Drawn
1	REV / COMMENTS OF 9-6-05	DRB	JDE	9/15/05	DRB
					Designed DRB/JDE
					Checked JDE
					Approved JDE

WESTERN VIRGINIA WATER AUTHORITY  
 LOWER PARKING LOT EXPANSION

DEMOLITION AND DETAILS  
 ROANOKE, VIRGINIA

SCALE: 1"=10'

AUGUST 18, 2005

PROJECT: 05052