

DEMOLITION NOTES

- DEMOLITION SHALL INCLUDE, UNLESS OTHERWISE NOTED ON DRAWINGS, REMOVAL OF EXISTING OBJECTS OR IMPROVEMENTS, WHETHER INDICATED ON THE DRAWINGS OR NOT, THAT WOULD IN THE OPINION OF THE OWNER, PREVENT OR INTERFERE WITH THE PROGRESS OR COMPLETION OF THE PROPOSED WORK.
- PERMITS, FEES AND LICENSES SHALL BE SECURED AND PAID FOR BY THE CONTRACTOR, INCLUDING DISPOSAL CHARGES AS REQUIRED.
- WORK SHALL COMPLY WITH THE REQUIREMENTS OF THE GOVERNING AUTHORITIES IN DEMOLITION OF EXISTING PAVEMENT, CURBS AND GUTTERS, DRAINAGE STRUCTURES AND UTILITIES AS MAY BE REQUIRED.
- ALL EXISTING UTILITIES TO ANY BUILDINGS SHOWN TO BE RAZED SHALL BE DISCONNECTED AND PLUGGED OR CAPPED AS REQUIRED BY THE COUNTY.
- CONTRACTOR SHALL SAW-CUT ALL JOINTS WHERE EXISTING CURBING, PAVEMENT AND SIDEWALK IS TO BE DEMOLISHED AND NEW CONSTRUCTION JOINS THE EXISTING.
- ALL EXISTING CURBING, CONCRETE SIDEWALK, ENTRANCES, BUILDING FOUNDATIONS AND TREES AND BRUSH THAT ARE DEMOLISHED SHALL BE REMOVED FROM THE SITE AND DISPOSED OF BY THE CONTRACTOR, BUILDING DEBRIS, ETC. SHALL NOT BE USED AS FILL MATERIAL ON THE SITE.
- MAKE ARRANGEMENTS, BEFORE INITIATING DEMOLITION, FOR RELOCATING, DISCONNECTING, REROUTING, ABANDONING, OR SIMILAR ACTION AS MAY BE REQUIRED RELATIVE TO UTILITIES AND OTHER UNDERGROUND PIPING, TO PERMIT WORK TO PROCEED WITHOUT DELAY. ARRANGEMENTS SHALL BE MADE IN ACCORDANCE WITH REGULATIONS OF AUTHORITIES OF UTILITIES MENTIONED, SUCH AS OVERHEAD AND UNDERGROUND POWER AND TELEPHONE LINES AND EQUIPMENT, GAS PIPING, STORM SEWERS, SANITARY SEWERS, OR WATER PIPING. CONTRACTOR SHALL NOT USE WATER WHEN IT MAY CREATE HAZARDOUS OR OBJECTIONABLE CONDITIONS, SUCH AS ICE, FLOODING AND/OR POLLUTION.
- CONDUCT OPERATIONS TO PREVENT DAMAGE TO ADJACENT BUILDINGS, STRUCTURES, OTHER FACILITIES, OR INJURY TO PERSONS.
- PROMPTLY REPAIR DAMAGES CAUSED TO ADJACENT FACILITIES BY DEMOLITION OPERATIONS AT NO COST TO THE OWNER.
- MAINTAIN EXISTING UTILITIES INDICATED TO REMAIN, KEEP IN SERVICE, AND PROTECT AGAINST DAMAGE DURING DEMOLITION OPERATIONS. PREVENT INTERUPTION OF EXISTING UTILITIES SERVING OCCUPIED OR USED FACILITIES, EXCEPT WHEN AUTHORIZED IN WRITING BY AUTHORITIES HAVING JURISDICTION. PROVIDE TEMPORARY SERVICES DURING INTERRUPTIONS TO EXISTING UTILITIES AS ACCEPTABLE TO GOVERNING AUTHORITIES.
- USE WATER SPRINKLING AND OTHER SUITABLE METHODS TO LIMIT DUST AND DIRT RISING AND SCATTERING IN AIR TO LOWEST PRACTICAL LEVEL.
- COMPLY WITH GOVERNING REGULATIONS PERTAINING TO ENVIRONMENTAL PROTECTION.

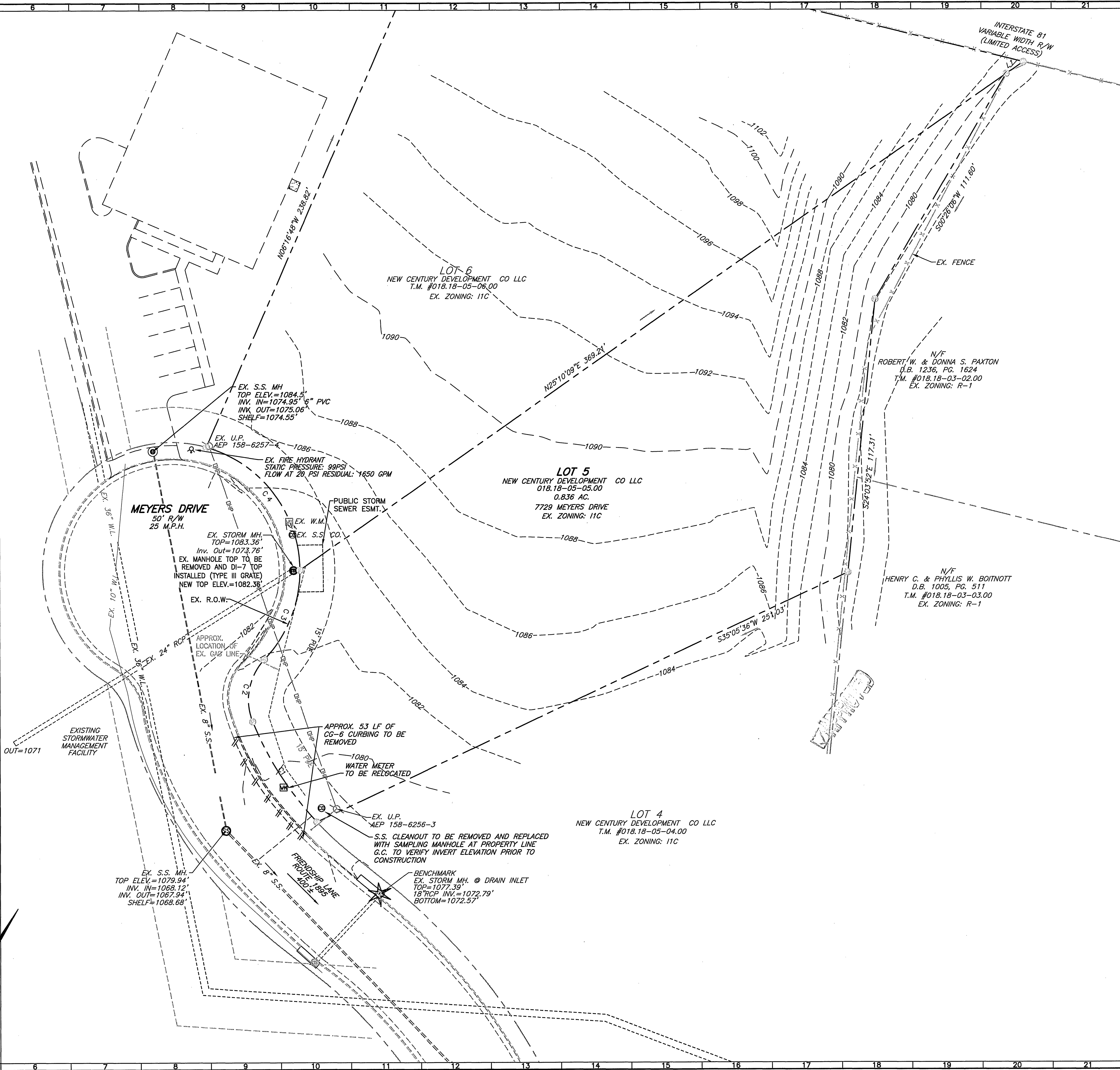
LINE TABLE		
LINE	BEARING	LENGTH
L1	S25°25'06"W	8.90'

CURVE TABLE						
CURVE #	LENGTH	RADIUS	TANGENT	CHORD BEARING	CHORD	DELTA
C1	51.27'	140.00'	25.92'	N62°15'59"W	50.98'	20°58'50"
C2	28.62'	25.00'	16.11'	N18°58'27"W	27.09'	65°36'13"
C3	42.04'	55.00'	22.11'	N08°04'13"W	41.02'	43°47'45"
C4	70.94'	55.00'	41.37'	N66°55'00"W	66.12'	73°53'48"

GRAPHIC SCALE



( IN FEET )  
1 inch = 20 ft.



**BALZER**  
AND ASSOCIATES, INC.  
**BVINE**  
REFLECTING TOMORROW  
www.balzer.cc

New River Valley  
Richmond  
Roanoke  
Shenandoah Valley

RESIDENTIAL LAND DEVELOPMENT ENGINEERING  
SITE DEVELOPMENT ENGINEERING  
LAND USE PLANNING & ZONING  
LANDSCAPE ARCHITECTURE  
LAND SURVEYING  
ARCHITECTURE  
STRUCTURAL ENGINEERING  
GEOTECHNICAL ENGINEERING  
TRANSPORTATION ENGINEERING  
ENVIRONMENTAL & SOIL SCIENCE  
WETLAND DELINEATIONS & STREAM EVALUATIONS

Balzer and Associates, Inc.  
1208 Corporate Circle  
Roanoke, VA 24018  
540-772-9580  
FAX 540-772-8050

COMMONWEALTH OF VIRGINIA  
CANTON JULIUS SCHAEFFER  
Lic. No. 45225  
12-28-09  
PROFESSIONAL ENGINEER

**E COMMERCE VENTURES**  
**EX. CONDITIONS & DEMO PLAN**  
HOLLIS DISTRICT  
ROANOKE COUNTY, VIRGINIA

DRAWN BY BTC  
DESIGNED BY BTC  
CHECKED BY AJS  
DATE 09/03/2009  
SCALE 1"=20'

REVISIONS:  
10-7-09  
10-28-09

SHEET NO.  
**C-2**  
JOB NO. R0900104.00