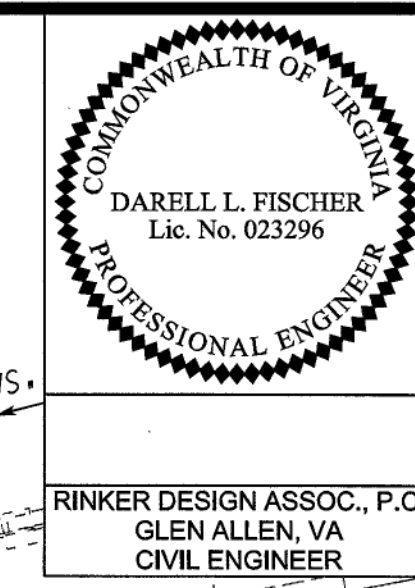


Constructors
 AS-BUILTS
 9-9-15
 [Signature]

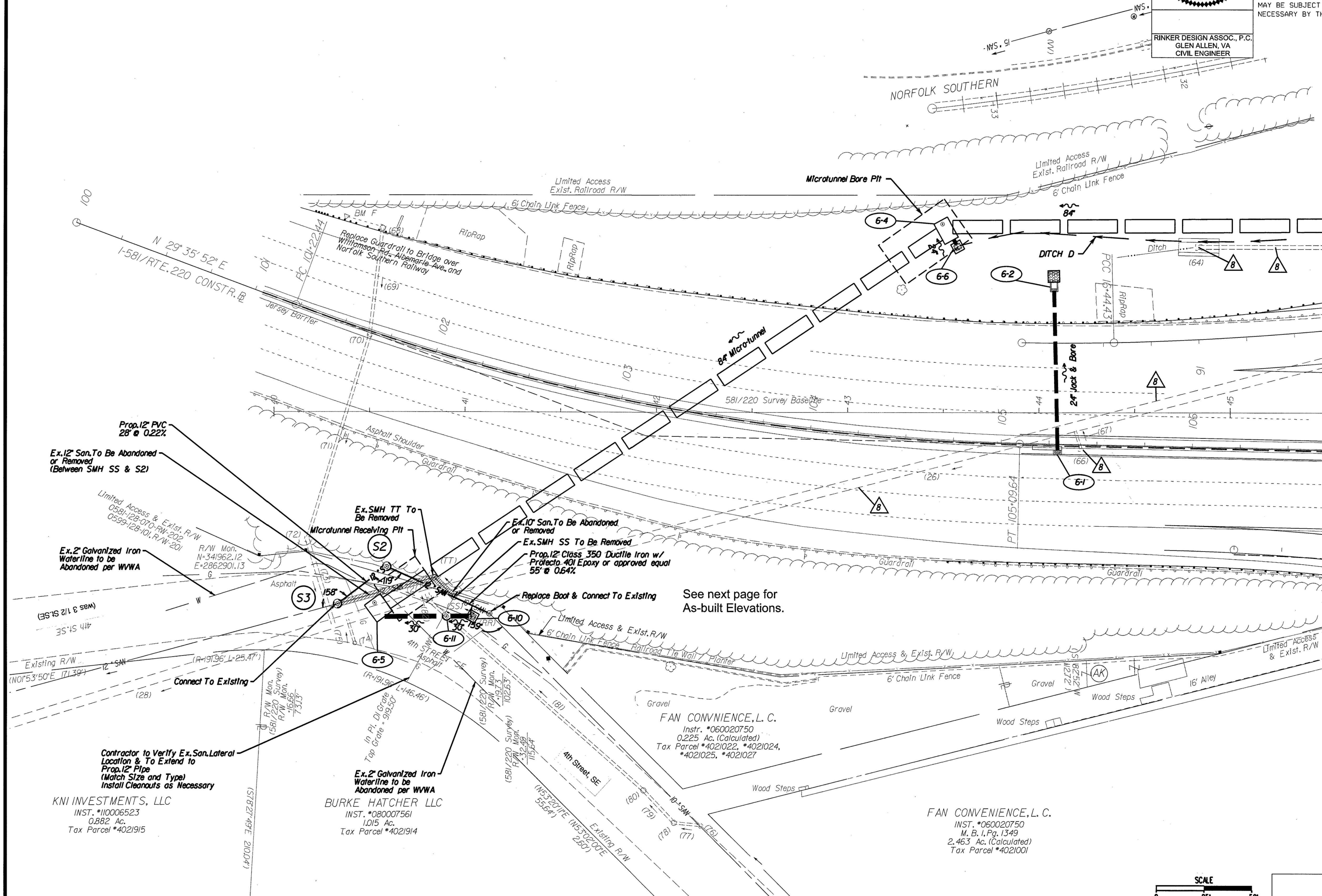
PROJECT MANAGER Robert A. Phagar, P.E. (540) 378-5083
 SURVEYED BY Neil MacLain, L.S. (540) 552-5592 & David L. Jones, L.S. (INX) (804) 664-4600
 DESIGN SUPERVISED BY Darrell L. Elischer, P.E. (804) 612-0665
 DESIGNED BY Bradlan L. Shock, P.E. (804) 612-0665

WATER & SEWER RELOCATION PLAN



REVISED	STATE	ROUTE	PROJECT	SHEET NO.
	VA.	24	0581-128-310, RW-201, C-501	18(6)

DESIGN FEATURES RELATING TO CONSTRUCTION OR TO REGULATION AND CONTROL OF TRAFFIC MAY BE SUBJECT TO CHANGE AS DEEMED NECESSARY BY THE DEPARTMENT

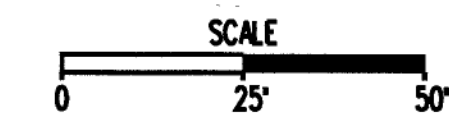


Rinker Design Associates, P.C.
 301 Commerce Boulevard, Suite 100, Glen Allen, VA 23060
 Telephone: (804) 612-0665, Fax: (804) 612-0665
 Training & Consulting into Opportunities

11/22/2013

See next page for As-built Elevations.

REFERENCES (PROFILES, DETAIL & DRAINAGE DESCRIPTION SHEETS, ETC.)	
Right of Way Data	IC
Property Owners Information	IC(1)
E&S Phase I & II	IK(3) & IK(3)
Typical Sections	2A-2A(1)
Drainage Descriptions	2B-2B(2)
Profile Sheets	7A-7B
Signing & Pave. Marking Plan	13(6)
Water & Sewer Details	18(1)-18(2)
Water & Sewer Relocation Profile	18(6A)



PROJECT	SHEET NO.
0581-128-310	18(6)