

SURVEYOR NOTES:

- 1) THIS PLAN WAS PREPARED WITHOUT BENEFIT OF A TITLE REPORT AND IS SUBJECT THERETO. THEREFORE, THERE MAY EXIST ENCUMBRANCES WHICH AFFECT THE PROPERTY NOT SHOWN HEREON.
- 2) THE SUBJECT PROPERTY IS WITHIN THE LIMITS OF ZONE "X" AS SHOWN ON THE FEMA FLOOD INSURANCE RATE MAP NO. 51161C0062 D, EFFECTIVE DATE OCTOBER 15, 1993. THIS DETERMINATION IS BASED ON SAID MAP AND HAS NOT BEEN VERIFIED BY ACTUAL FIELD ELEVATION.
- 3) UTILITIES SHOWN ARE AS LOCATED IN THE FIELD AND AVAILABLE RECORDS AND SHOULD BE CONSIDERED APPROXIMATE. "MISS UTILITY" HAS NOT MARKED ANY UTILITIES. PARKER DESIGN GROUP DOES NOT WARRANT THE LOCATION OF THE UNDERGROUND UTILITIES.
- 4) TOPOGRAPHIC INFORMATION SHOWN IS BASED ON A CURRENT FIELD SURVEY DATED 05-09-06. CONTOURS ARE AT TWO (2) FOOT INTERVALS AND ARE BASED ON AN ASSUMED DATUM. BENCHMARKS ARE AS SHOWN ON PLAN.

GENERAL DEMOLITION NOTES

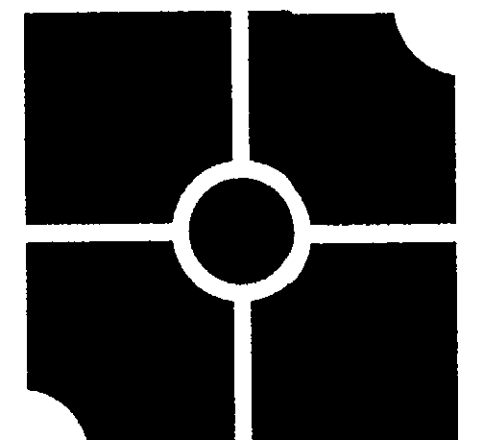
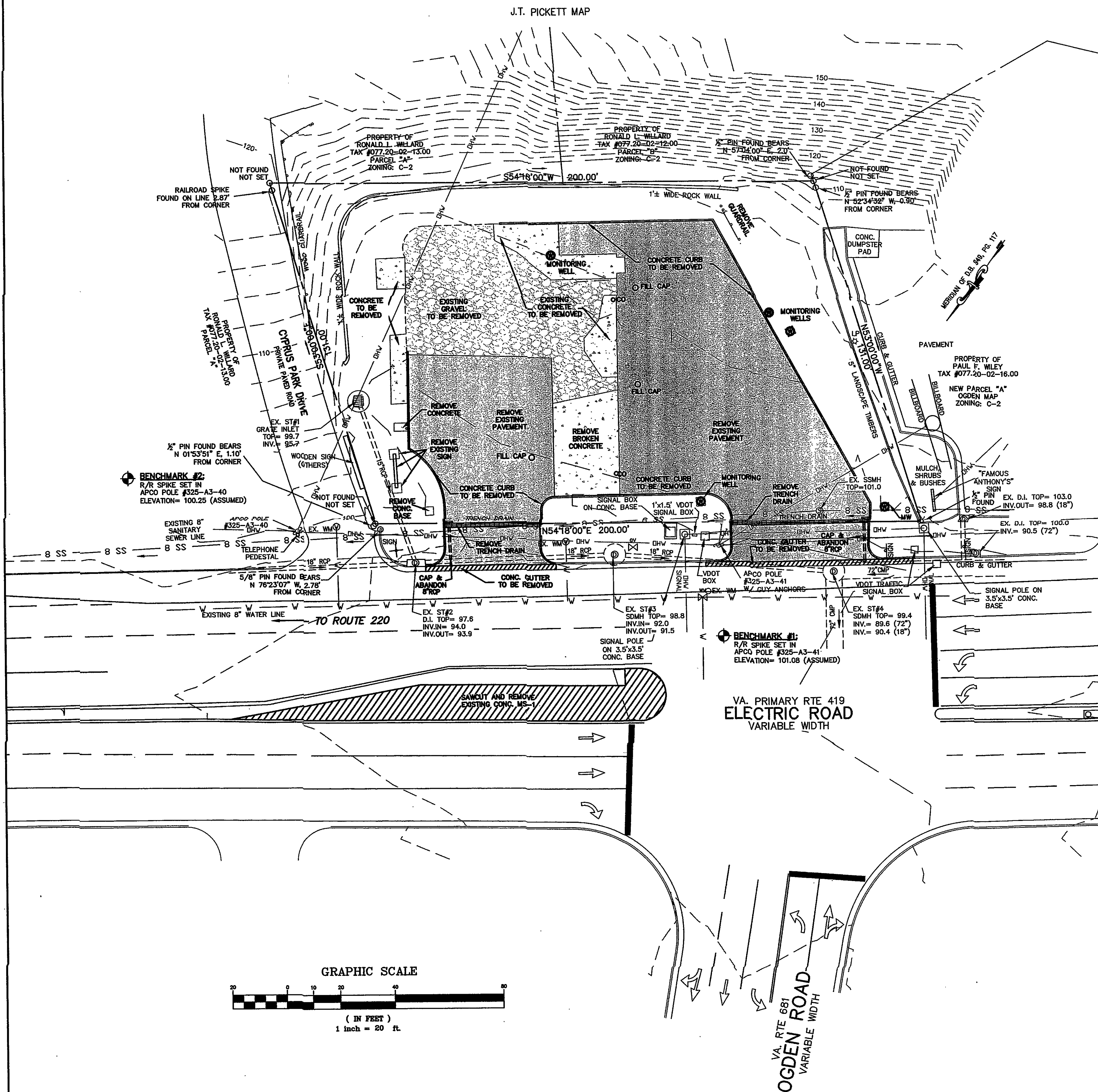
- 1) THE CONTRACTOR SHALL PROVIDE AT LEAST THE FOLLOWING PROTECTIONS AT THE JOB SITE: MAKE ARRANGEMENTS, BEFORE INITIATING DEMOLITION, FOR RELOCATING, ABANDONING, OR SIMILAR ACTION AS MAY BE REQUIRED RELATIVE TO UTILITIES TO PERMIT WORK TO PROCEED WITHOUT DELAY. ARRANGEMENTS SHALL BE MADE IN ACCORDANCE WITH REGULATIONS OF AUTHORITIES OF UTILITIES MENTIONED, SUCH AS OVERHEAD AND UNDERGROUND ELECTRIC, TELEPHONE, GAS, WATER, ETC.
- 2) ENSURE SAFE PASSAGE OF PERSONS AROUND ALL AREAS OF DEMOLITION. CONDUCT OPERATIONS TO PREVENT DAMAGE TO ADJACENT BUILDINGS, STRUCTURES, OTHER FACILITIES, OR INJURY TO PERSONS.
- 3) PROMPTLY REPAIR DAMAGES CAUSED TO ADJACENT FACILITIES BY DEMOLITION OPERATIONS AT NO COSTS TO THE OWNER(S).
- 4) MAINTAIN EXISTING UTILITIES INDICATED TO REMAIN, KEEP IN SERVICE, AND PROTECT AGAINST DAMAGE DURING DEMOLITION OPERATIONS, PREVENT INTERRUPTION OF SERVICES. PROVIDE TEMPORARY SERVICES DURING INTERRUPTIONS TO EXISTING UTILITIES AS ACCEPTABLE TO GOVERNING AUTHORITIES.
- 5) USE WATER SPRINKLING AND OTHER SUITABLE METHODS TO LIMIT DUST AND DIRT POLLUTION TO THE LOWEST PRACTICAL LEVEL.
- 6) COMPLY WITH GOVERNING REGULATIONS PERTAINING TO ENVIRONMENTAL PROTECTION.
- 7) RETURN ADJACENT AREAS TO EXISTING CONDITIONS PRIOR TO THE START OF WORK.
- 8) PERMITS, FEES, AND LICENSES SHALL BE SECURED AND PAID FOR BY THE CONTRACTOR, INCLUDING DISPOSAL CHARGES AS REQUIRED.
- 9) ALL WORK SHALL COMPLY WITH THE REQUIREMENTS OF THE GOVERNING AUTHORITIES IN DEMOLITION OF EXISTING PAVEMENT, CONCRETE, CURB, AND OTHER STRUCTURES AS MAY BE REQUIRED.
4. THE SITE SHALL BE CLEARED AND SELECTED ITEMS REMOVED AS SHOWN WITHIN THE LIMITS OF DISTURBANCE. ALL DEBRIS SHALL BE REMOVED FROM THE SITE. THE CONTRACTOR SHALL SAW-CUT CURB, PAVEMENT, ETC. AT ALL PLACES WHERE NEW CONSTRUCTION JOINS THE EXISTING.

ABBREVIATIONS:

CONC.	CONCRETE
M.B.L.	MINIMUM BUILDING LINE
R.Y.S.	REAR YARD SETBACK
SDMH	STORM DRAINAGE MANHOLE
SSMH	SANITARY SEWER MANHOLE
EX.	EXISTING
MW	MONITORING WELL
CO	CLEANOUT

NOTE:

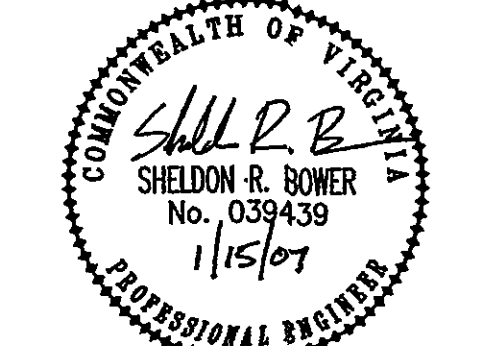
ALL EXISTING MONITORING WELLS, CLEANOUTS, AND FILL CAPS SHALL BE CAPPED AND ABANDONED AT A POINT BELOW FINISHED GRADE.



parker
DESIGN GROUP
ENGINEERS • SURVEYORS • PLANNERS • ARCHITECTS

816 Boulevard
Salem, Virginia 24153
Phone: 540-387-1153
Fax: 540-389-5767
www.parkerdg.com

These documents are the property of Parker Design Group (PDG) and may not be reproduced or used without the express permission of PDG. Any reuse of these documents without authorization of PDG will be at the sole risk of the individual or entity using said documents.



**Comprehensive Site Plan
For FNB - Salem Bank & Trust**
Cave Spring Magisterial District
Roanoke County, Virginia

REVISIONS:

Per County VDOT comments	November 9, 2006
Per County comments	December 20, 2006
Per County comments	January 15, 2007

NB: JR-283

DESIGNED BY: SLR

DRAWN BY: SLR

CHECKED BY: SRB

SCALE: 1" = 20'

DATE: August 10, 2006

SHEET TITLE:

Existing Conditions
& Demolition Plan

C02
02 OF 08
PROJECT NUMBER:
06-0211-03