

- 

## SANITARY SEWER LATERAL

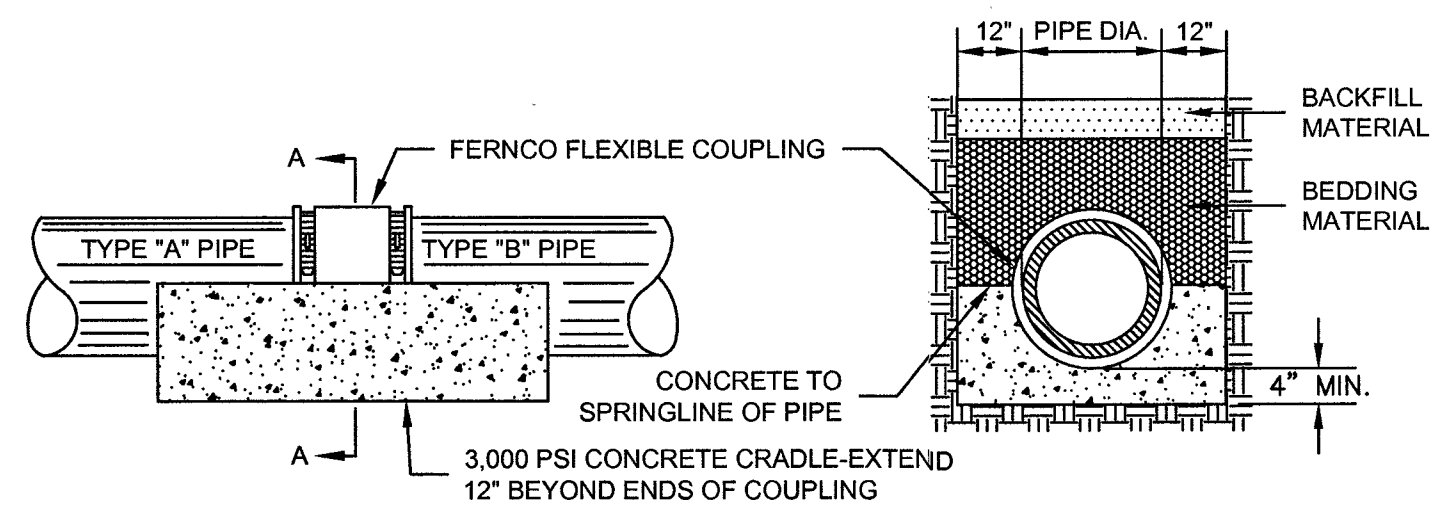
**S-6**

01/01/12

- 
- Diagram illustrating a pipe disconnect method using concrete plugs. The diagram shows a vertical pipe structure with a manhole at the top. A horizontal pipe is shown being disconnected from the main structure. The existing pipe to the manhole connection is to remain. The pipe to be abandoned is shown with a 2" minimum thickness. The disconnect is achieved by using a mechanical plug and ready mix concrete (3000 PSI in 28 days) to seal the pipe. The concrete plug is shown with a minimum thickness of 20" and a minimum width of 20". The existing manhole to remain is shown at the top of the structure.

## SANITARY SEWER PIPE ABANDONMENT AT A MANHOLE

01/01/12



## JOINING DISSIMILAR PIPE FOR USE WITH EXISTING PIPE

**S-11**

- 
- PAVEMENT IN ACCORDANCE WITH GOVERNING JURISDICTIONAL REQUIREMENTS
- REMOVE MANHOLE FRAME AND COVER, RESTORE TO MATCH SURROUNDING AREA AND GRADE
- FINISHED GRADE
- REMOVE MANHOLE TO A MINIMUM OF TWO FEET BELOW FINISHED GRADE (REMOVE ALL GRADE RINGS)
- 18" MINIMUM
- #57 STONE, LEAN CONCRETE, OR FLOWABLE FILL
- FILL MANHOLE SOLID WITH 3,000 PSI CONCRETE
- MECHANICAL PLUG

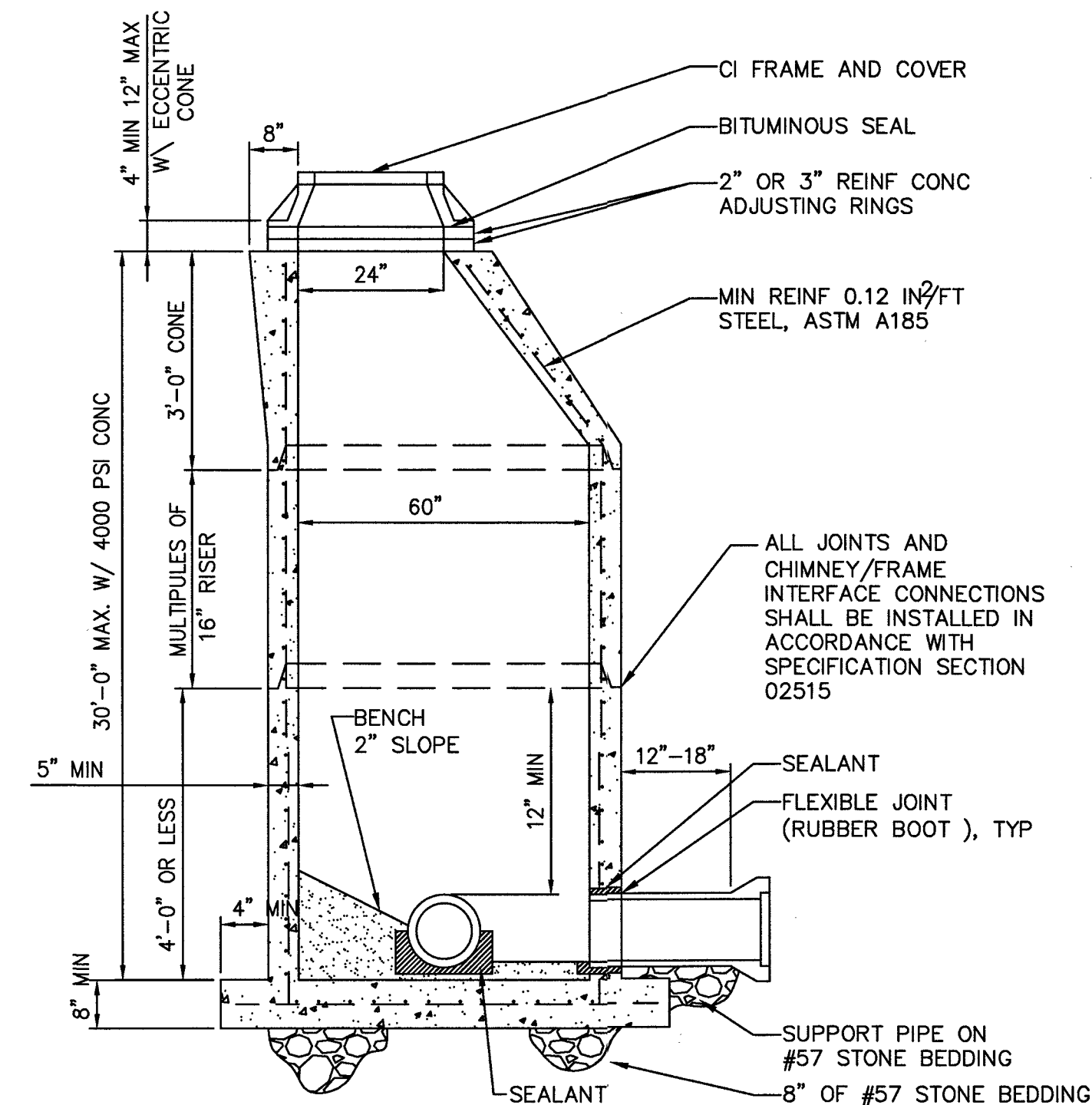
## SANITARY SEWER MANHOLE ABANDONMENT

01/01/12

- 
- SIPHON BOX VENT**
- 4" DIP
- BACKWATER VALVE  
JOSAM SERIES 67100  
OR EQUAL
- HEIGHT 2'  
UNLESS SPECIFIED  
ON PLAN SET
- 4" Ø VENT PIPE
- MANHOLE VENT SUPPORT**
- 8" MAX.
- SS NUTS
- 2" X 1/4" SS CLAMP
- 4" Ø VENT PIPE
- 1/2" Ø SS ALL-THREAD ROD
- THREADED ANCHOR
- NOTE:  
1. ANCHOR HOLES SHALL NOT EXTEND THROUGH MANHOLE WALL.
- MANHOLE VENT SUPPORT**
- BACKWATER VALVE  
JOSAM SERIES 67100  
OR EQUAL
- ALUM. INSECT SCREEN
- HEIGHT 3'  
UNLESS SPECIFIED  
ON PLAN SET
- 1' X 1' X 1' CLASS A CONC. PAD
- MANHOLE VENT SUPPORT  
(SEE ABOVE)
- CORE BORE HOLE (UNLESS  
CAST-IN-PLACE  
BOOT IS USED)
- FLEXIBLE BOOT
- WATERTIGHT  
FRAME & COVER  
(ALL MANHOLES)
- 4" DIP
- 24" MIN.
- 12" MIN.
- MANHOLE VENT SUPPORT**

MANHOLE VENT - ADJACENT

01/01/12



- ## STANDARD 60"Ø PRECAST CONCRETE MANHOLE

NOT TO SCALE

## DETAILS

WESTERN VIRGINIA WATER AUTHORITY FY2011  
VCWRLF COLLECTION SYSTEM PROJECTS

ROANOKE, VIRGINIA

DESIGNED BY:

LMR

DRAWN BY:

BMC

CHECKED BY:

LMR

SCALE:

NO SCA

DATE: \_\_\_\_\_

04/14/

PROJECT NUM

133

B11

---

D-004