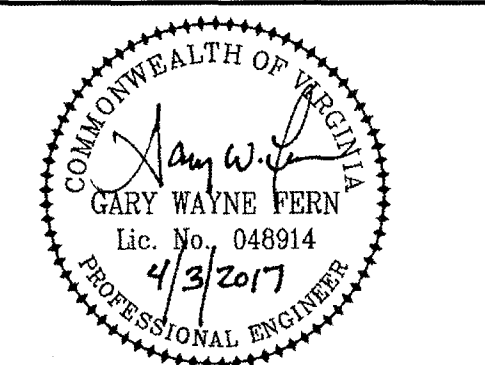
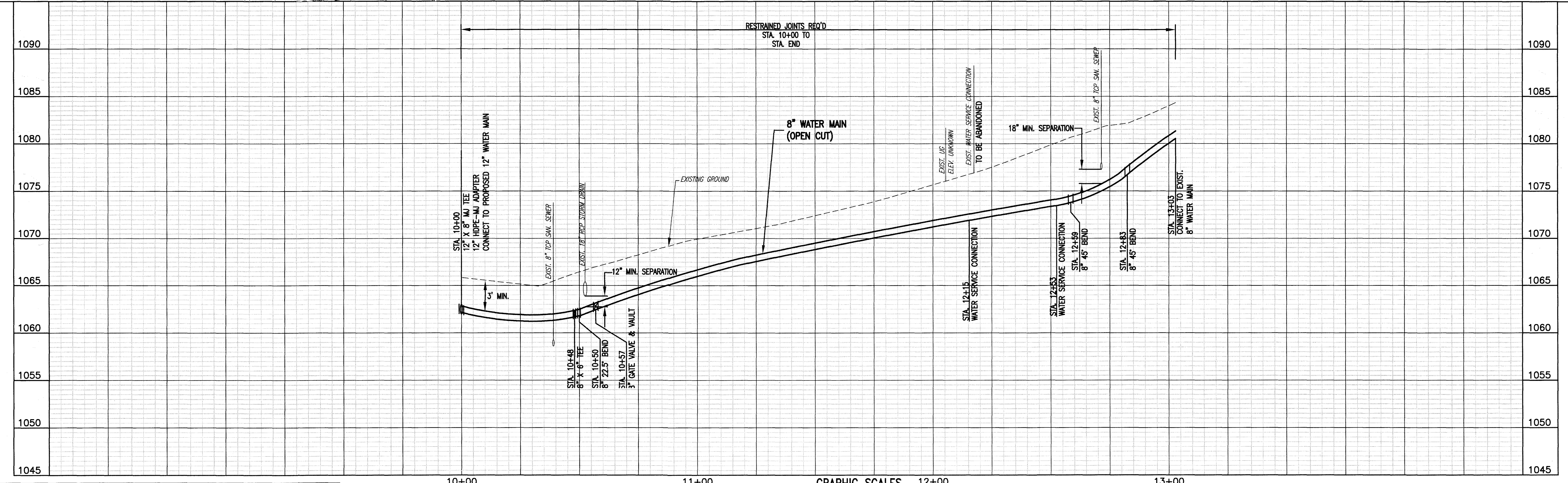


NOTE:
1. FOR CONTINUATION ALONG MELROSE AVENUE NW, SEE SHEET 11.



WESTERN VIRGINIA WATER AUTHORITY
601 South Jefferson Street, Suite 300
Roanoke, Virginia 24011

DES: GRM
DRAWN: JES
CHECK: GWF
DATE: 4/03/17

SCALE: AS SHOWN
HORIZ: 1" = 20'
VERT: 1" = 5'

3. MELROSE AVENUE & COUNTRY CLUB DRIVE
WATER MAIN REPLACEMENT
CHANGE ORDER #1

REV	DATE	DESCRIPTION

COUNTRY CLUB DR. NW
PLAN - PROFILE
STA. 10+00 TO STA. 12+53

DRAWING
-

SHEET
18