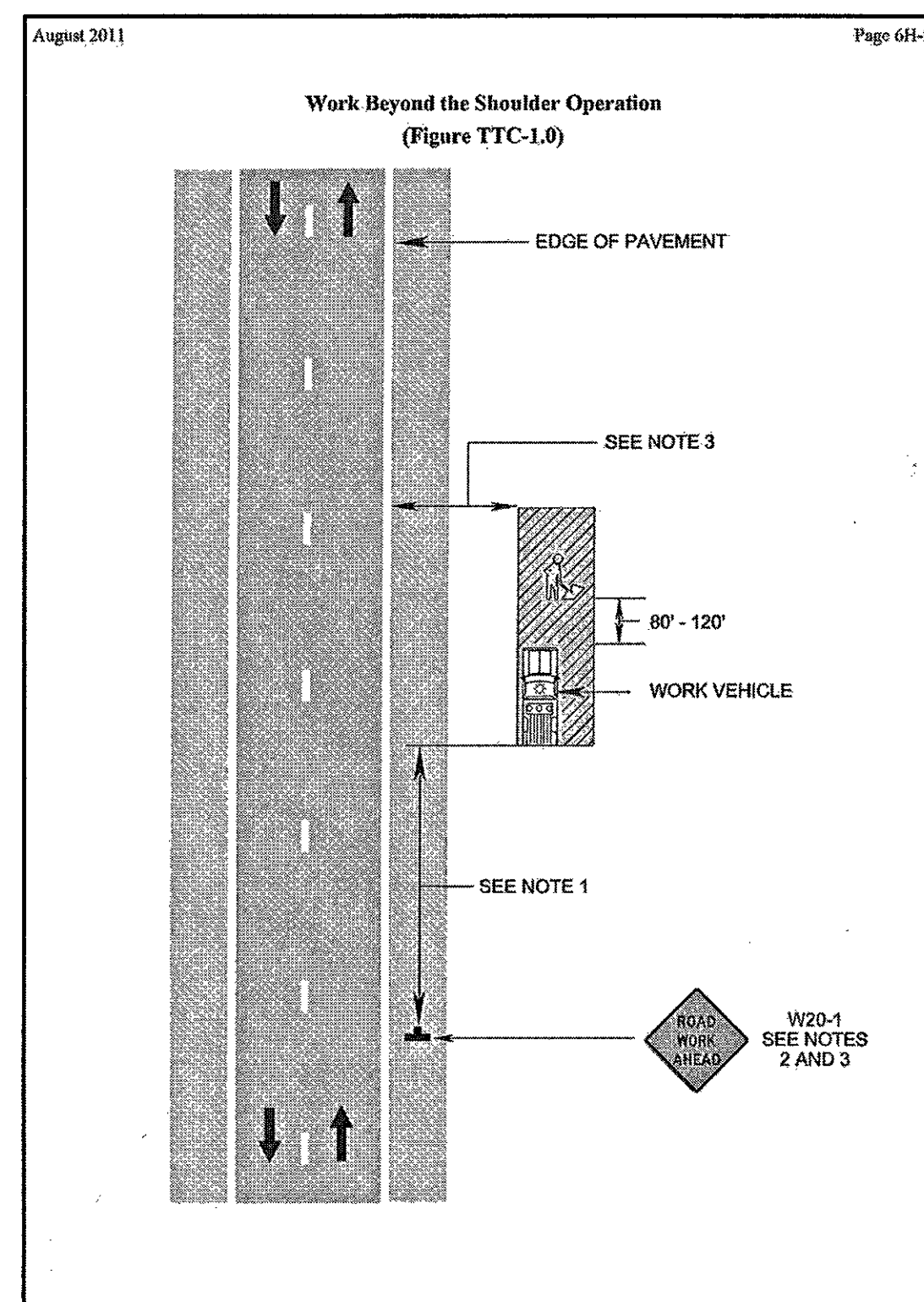
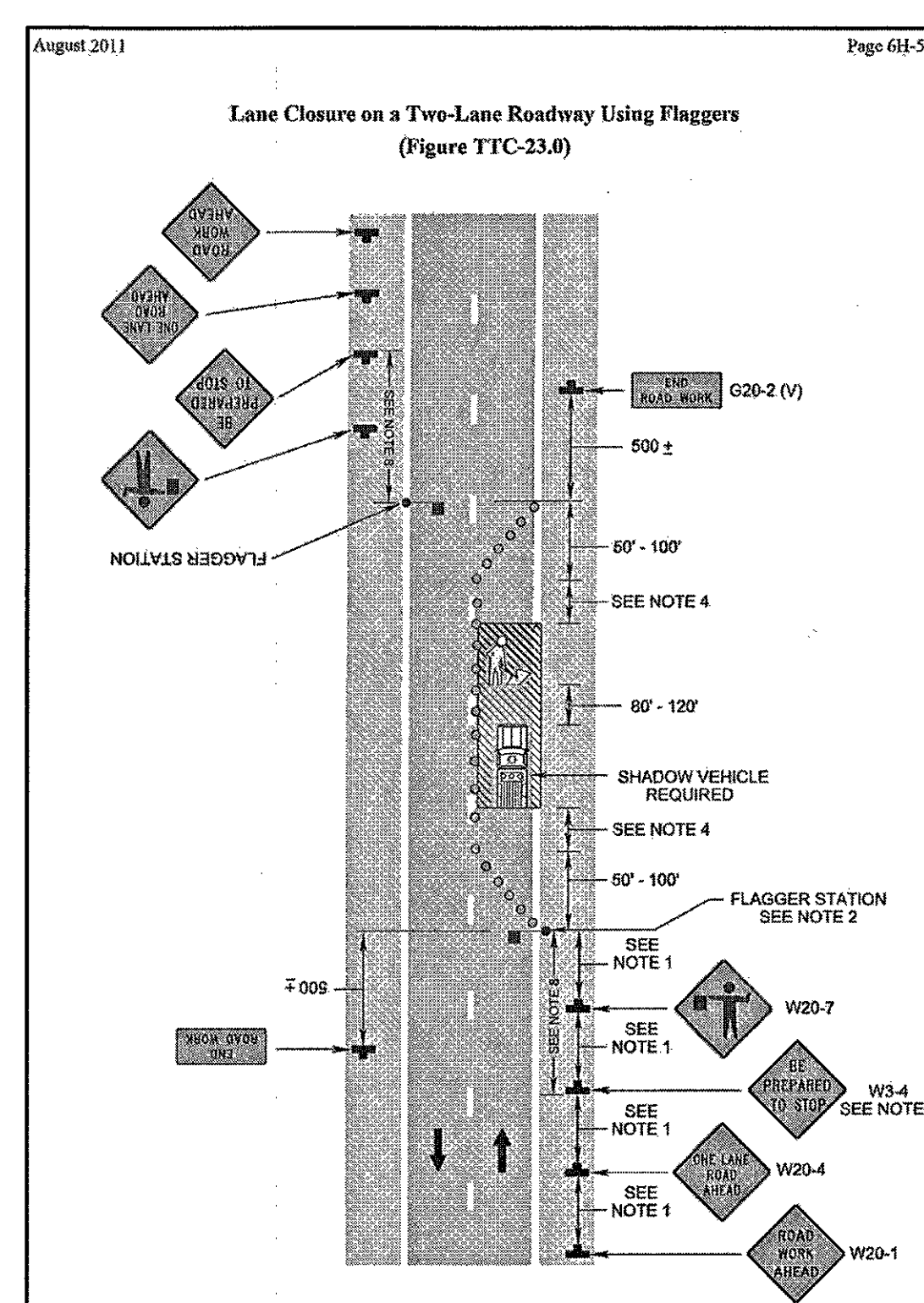


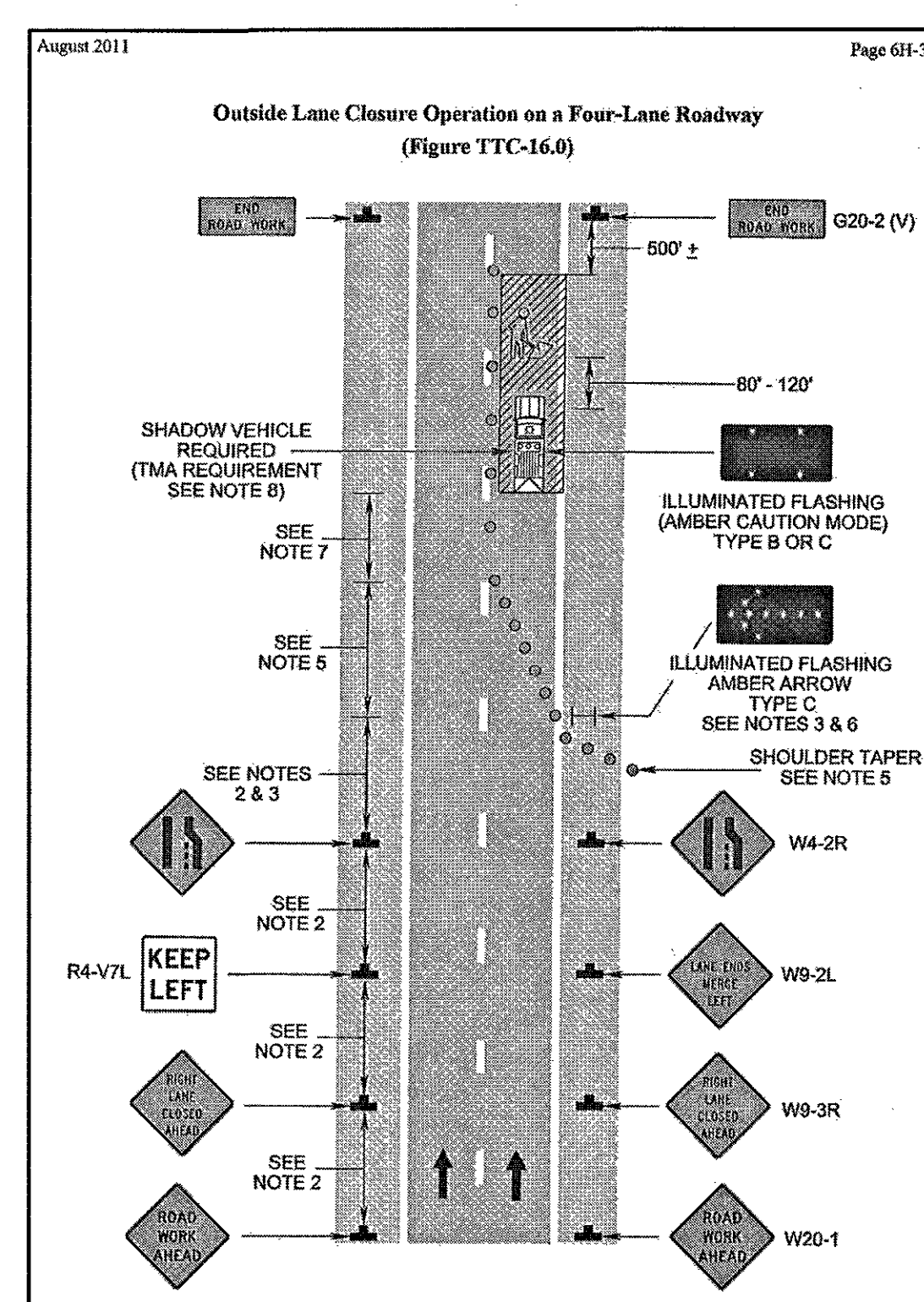
1 MOBILE OR SHORT DURATION SHOULDER OPERATION DETAIL



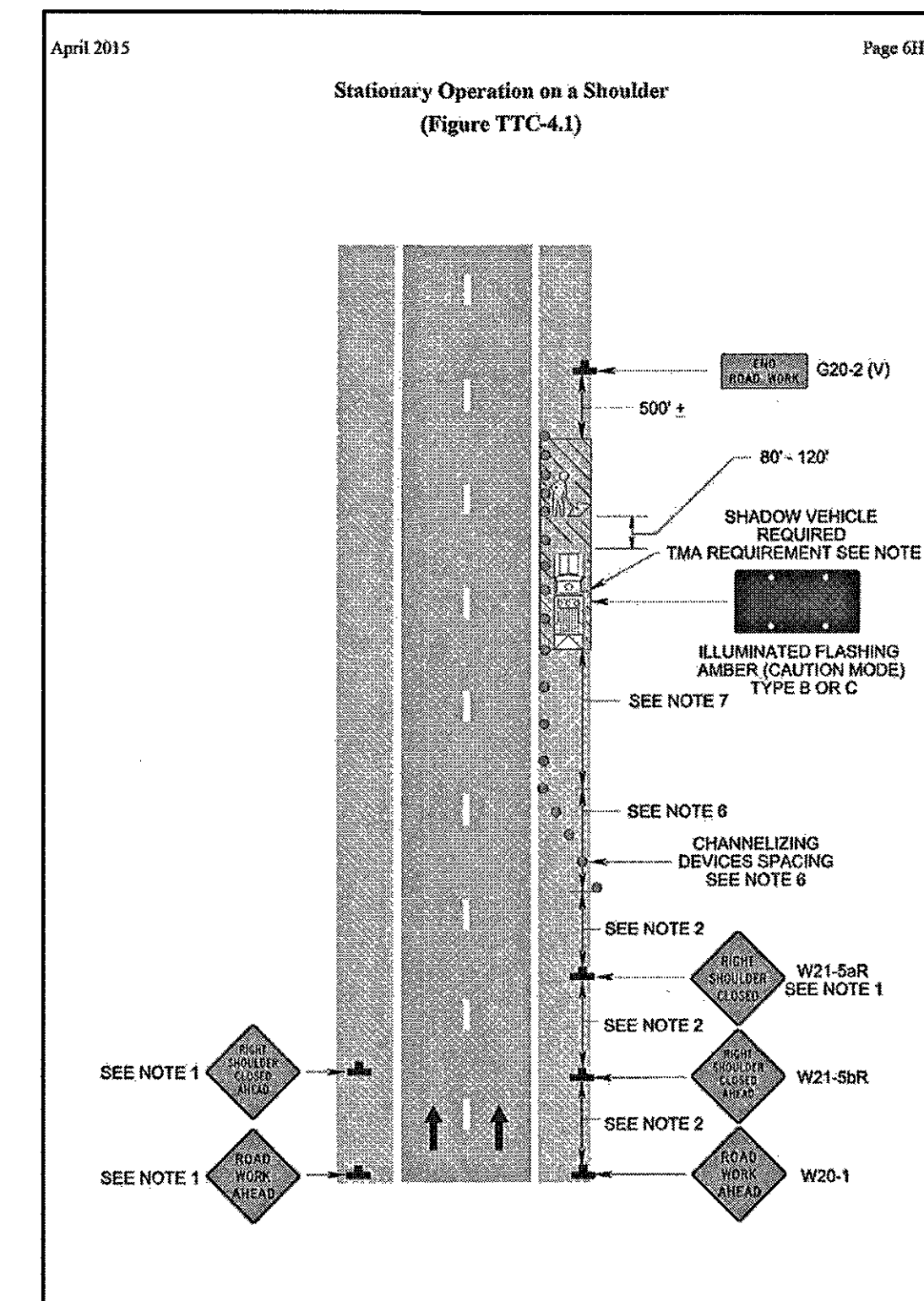
2 WORK BEYOND THE
SHOULDER OPERATION DETAIL
SCALE: N.T.S.



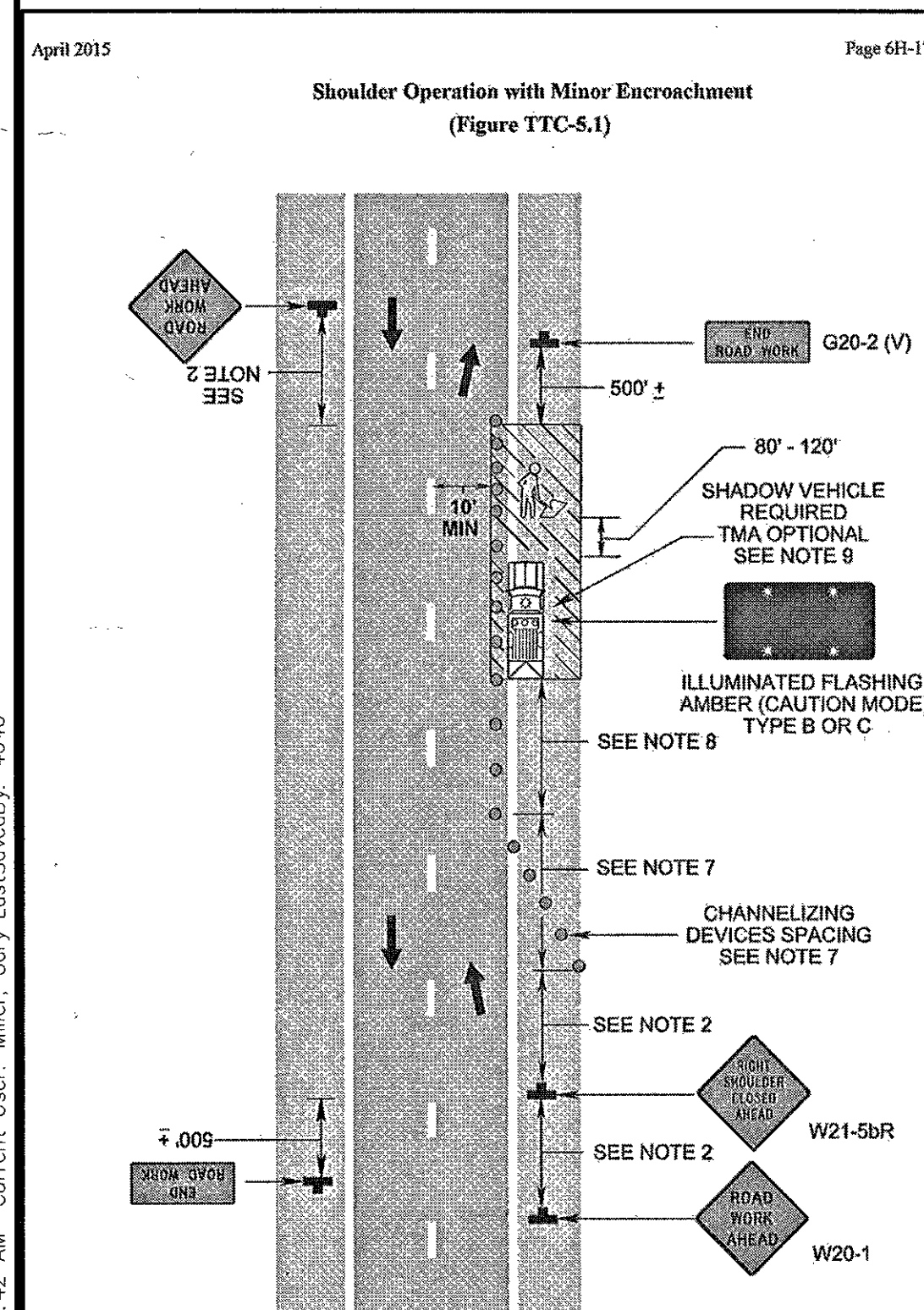
3 LANE CLOSURE ON A TWO-LANE ROADWAY USING FLAGGERS DETAIL



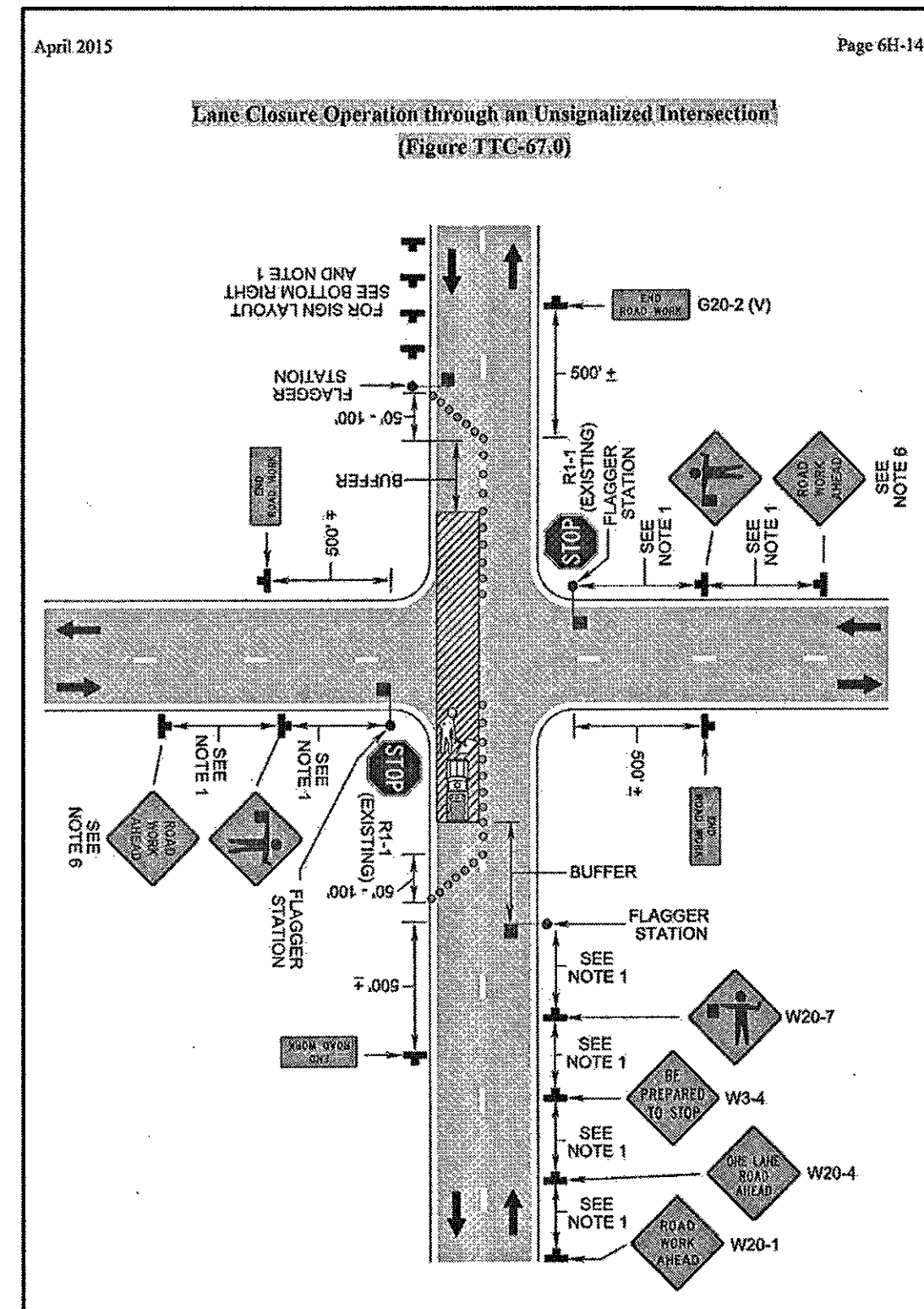
4 OUTSIDE LANE CLOSURE OPERATION ON A FOUR-LANE ROADWAY DETAIL



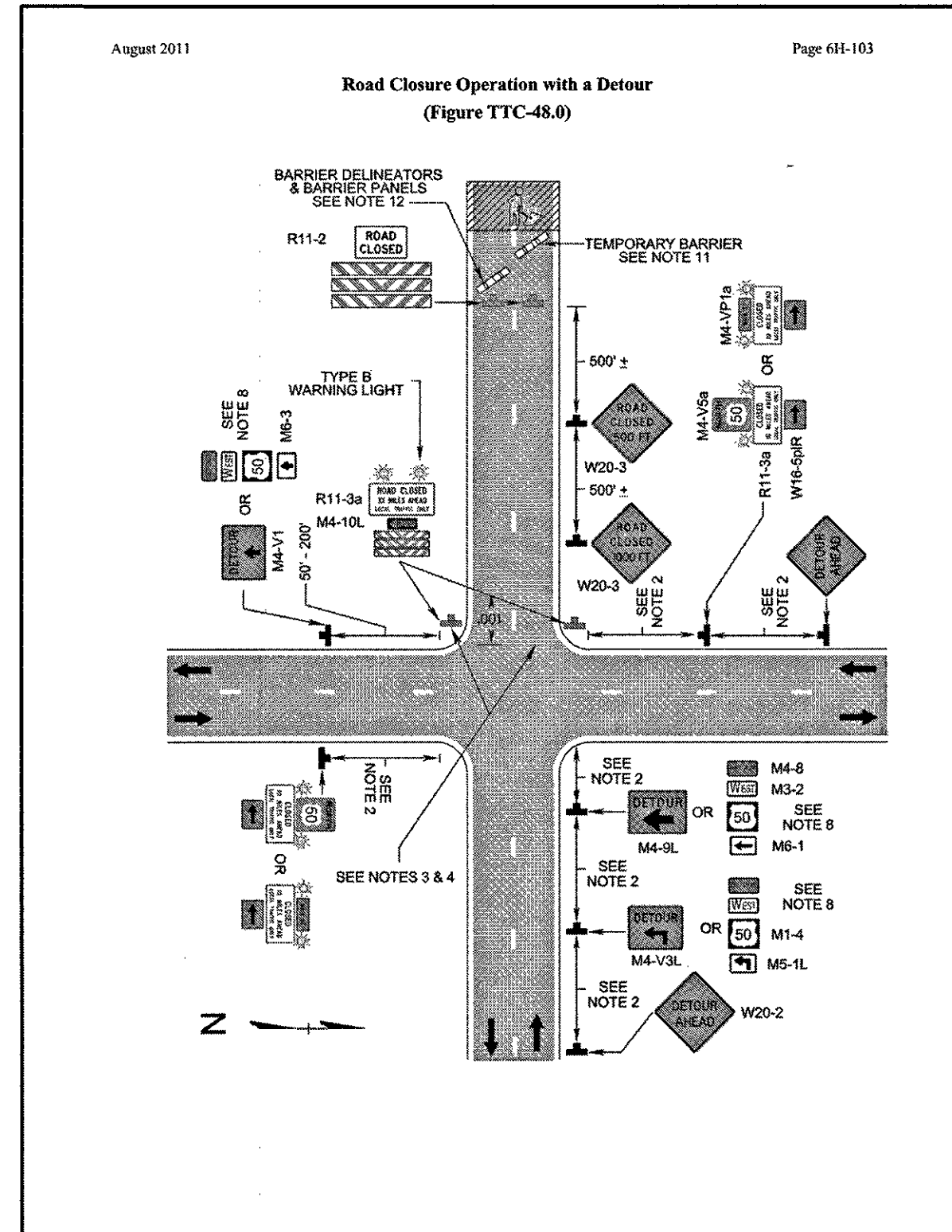
5 STATIONARY OPERATION ON A SHOULDER DETAIL
SCALE: N.T.S.



6 SHOULDER OPERATION
WITH MINOR ENCROACHMENT DETAIL
SCALE: N.T.S.



7 LANE CLOSURE OPERATION THROUGH AN UNSIGNALIZED INTERSECTION DETAIL



8 ROAD CLOSURE WITH A DETOUR DETAIL
SCALE: N.T.S.

NOTES:

1. THE VDOT FIGURES ON THIS DRAWING ARE PROVIDED AS REPRESENTATIVE EXAMPLES AND ARE FOR REFERENCE ONLY. ALL WORK CONDUCTED WITHIN PUBLIC RIGHTS-OF-WAY MAINTAINED BY VDOT SHALL BE IN FULL COMPLIANCE WITH:

- VIRGINIA DEPARTMENT OF TRANSPORTATION (VDOT)
- MANUAL ON UNIFORM TRAFFIC CONTROL DEVICES (MUTCD)
- VIRGINIA WORK AREA PROTECTION MANUAL

STANDARDS AND GUIDELINES FOR TEMPORARY TRAFFIC CONTROL

2. LANE CLOSURES WILL BE TIME OF DAY LIMITED AS REQUIRED BY VDOT.

3. FIELD CONDITIONS MAY CAUSE VARIANCE TO BORE PIT DETAILS. ANY DEVIATIONS WILL BE DETERMINED BY VDOT PRIOR TO CONSTRUCTION.

[illegible]

TRAFFIC CONTROL DETAILS

| | | |
|-------------------------|-----------------------|--------------------|
| Designed By: JRM | Drawn By: GLM | Checked By: DBH |
| Issue Date: 10-14-16 | Project No.: 31237 | Scale: AS SHOWN |