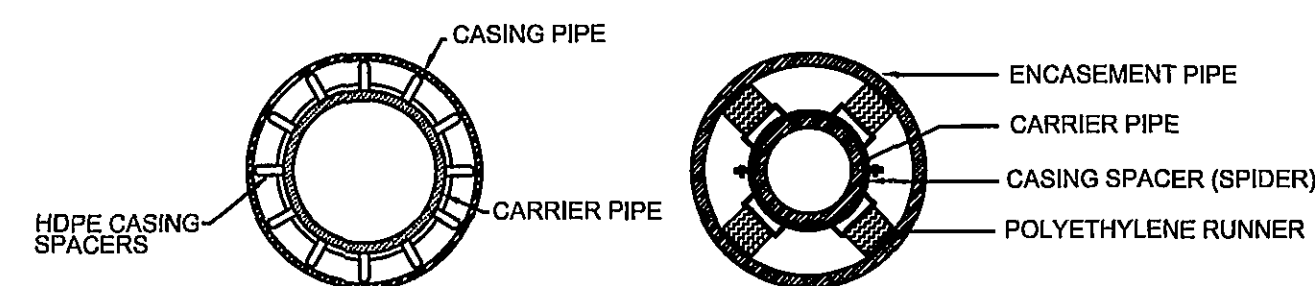


\* ADDITIONAL SPACING ALLOWED AS RECOMMENDED BY PIPE MANUFACTURER.

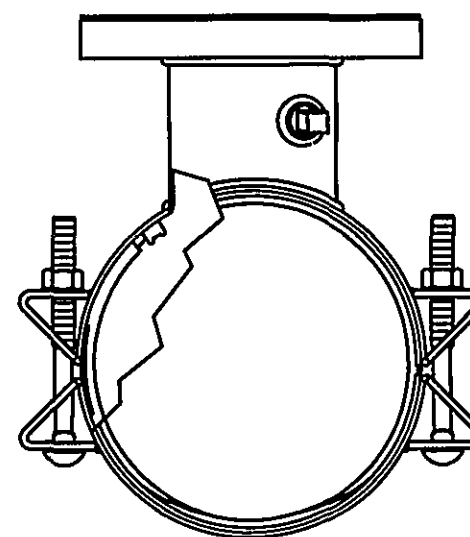
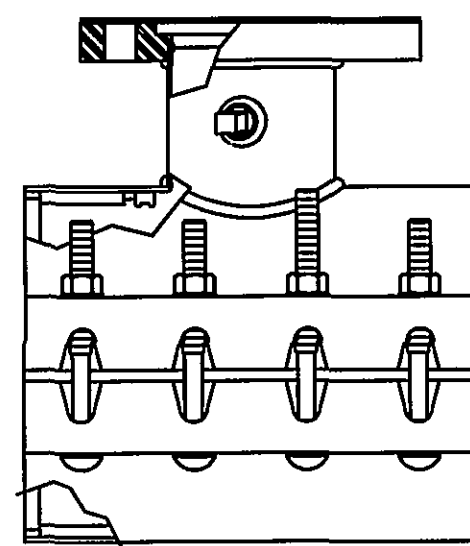


NOTES:

1. A 1" DRAIN WILL BE REQUIRED ON THE LOWER END OF THE CASING IF THE CASING ENDS ARE SEALED WITH MORTAR AND BRICK.
2. SPACERS SHALL BE RACI HDPE, SPIDER OR EQUIVALENT.
3. SPACERS SHALL BE SPACED 6 1/2" ON SEWER PIPE.
4. CARRIER PIPE SHALL BE DUCTILE OR HDPE IN ACCORDANCE WITH THE AUTHORITY STANDARDS.

## WESTERN VIRGINIA WATER AUTHORITY - CONSTRUCTION STANDARDS

REVISION DATE			
<u>07/01/04</u>		PIPE SUPPORT IN CASING PIPE	W-22
<u>03/01/08</u>			



1. TAPPING SLEEVE SHALL BE PERWEAL MODEL 3490 TYPE 304 STAINLESS STEEL WITH CARBON STEEL FLANGE, ROMAC'S MODEL SST III, FORD MODEL FTSS WITH CARBON STEEL FLANGE OR APPROVED EQUIVALENT. SLEEVE SHALL BE RATED AT 250 PSI AND MUST HAVE A TEST PLUG.
2. TAPPING VALVE SHALL BE AVK RESILIENT SEATED GATE VALVE SERIES 25 MJFL OR Mueller T-2360 RESILIENT WEDGE TAPPING VALVE WITH MJFL. VALVE SHALL BE RATED AT 250 PSI.
3. TAPPING SLEEVE AND VALVE SHALL BE FULL PORT TO ACCEPT FULL SIZE SHELL CUTTER.
4. STEEL FLANGE SHALL MEET AWWA C207.

WESTERN VIRGINIA WATER AUTHORITY - CONSTRUCTION STANDARDS

<b>REVISION DATE</b>		TAPPING SLEEVE AND VALVE	W-23
<u>07/01/04</u>			
<u>03/01/06</u>			

COMMONWEALTH OF VIRGINIA  
*Daniel M. Early*  
 DANIEL M. EARLY  
 Lic. No. 031787  
 04/07/09  
 PROFESSIONAL ENGINEER

# ACS DESIGN

**ENGINEERING - SURVEYING**  
**LANDSCAPE ARCHITECTURE**  
**CONSTRUCTION MANAGEMENT**

2203 PETERS CREEK ROAD  
ROANOKE, VIRGINIA 24017  
P 540.562.2345 F 562.2344  
INFO@ACSDSIGNLLC.COM  
WWW.ACSDESIGNLLC.COM

**Fairhope Road Sewer Extension  
Western Virginia Water Authority  
City of Roanoke, Virginia**

© ACS DESIGN, LLC - Material included herein is covered by copyright. Use of this work in whole or in part is strictly forbidden without the expressed written consent of ACS DESIGN, LLC.

DRAWN BY:	KMF/ JSH
DESIGNED BY:	DME
CHECKED BY:	DME
DATE:	17 MAR 2009
JOB NUMBER:	07248B

REVISIONS:	
No. 1	04/07/2009
City of Roanoke Comments	
No. 2	
No. 3	
No. 4	

SHEET NO.:  
C8

## WATER DETAILS