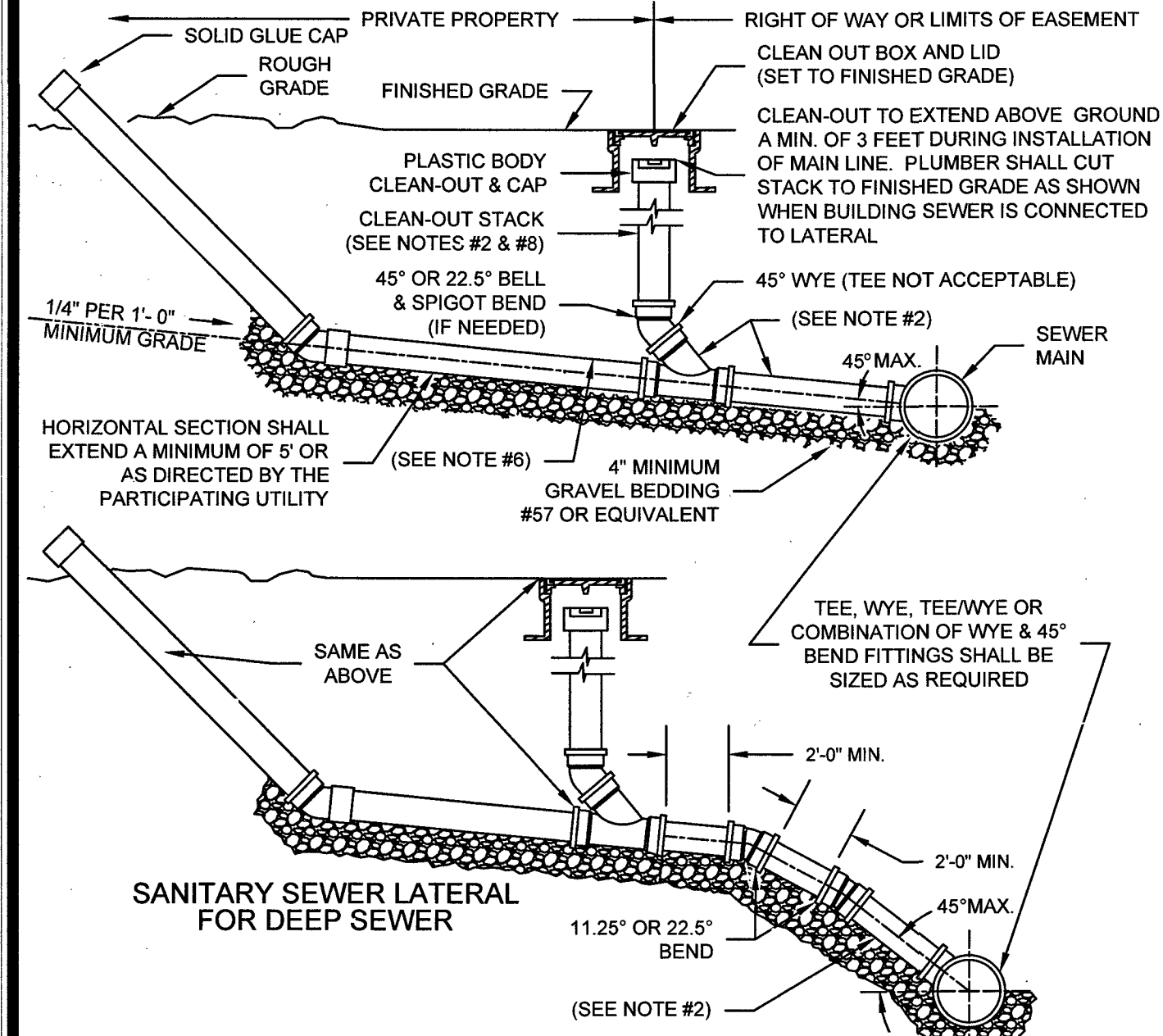


A  
B  
C  
D  
E  
F  
G  
H  
I

1. TRAFFIC BEARING BOX AND LID REQUIRED IN TRAFFIC AREAS (CAPITOL FOUNDRY V8-9'S).
2. SEWER LATERAL AND CLEANOUT PIPING SHALL BE ASTM D3034 SDR 26. SEWER LATERAL FITTINGS SHALL BE OF SAME SDR RATINGS AS THE SEWER MAIN. SCHEDULE 40 SOLVENT WELD PIPE AND FITTINGS MAY BE USED FOR THE SEWER LATERAL AND CLEANOUT ASSEMBLY WITH APPROVAL FROM THE PARTICIPATING UTILITY.
3. ALL PIPE SHALL BE OF SAME SIZE.
4. NO BENDS ARE ALLOWED IN THE LATERAL FROM THE MAIN TO THE CLEANOUT STACK WYE. (EXCEPT FOR DEEP SEWER, AS SHOWN BELOW).
5. ALL MAIN LINE TAPS ON ACTIVE MAINS SHALL BE PERFORMED BY PARTICIPATING UTILITY.
6. PIPING ON PRIVATE SIDE OF CLEANOUT TO BE INSTALLED PER GOVERNING JURISDICTION REQUIREMENTS.
7. MINIMUM LATERAL SIZE: 4" FOR RESIDENTIAL SERVICE, 6" FOR NON-RESIDENTIAL SERVICE.
8. SEWER CLEANOUTS SHALL BE SAME SIZE AS SEWER LATERAL.
9. MINIMUM COVER FOR ALL SEWER LATERALS SHALL BE THREE (3) FEET.
10. PROPERTY OWNER RESPONSIBLE FOR INSTALLING CLEANOUT ON PROPERTY LINE (IN ACCORDANCE WITH THIS DETAIL) WHEN MAINTENANCE OCCURS.
11. LOWEST SERVED FINISHED FLOOR ELEVATION SHALL BE A MINIMUM OF THREE FEET (3') ABOVE THE TOP OF THE MAIN AT THE POINT WHERE THE SERVICE LATERAL CONNECTS TO THE MAIN.
12. WHEN CONNECTING TO EXISTING LATERAL USE FERNOCO FLEXIBLE COUPLING.



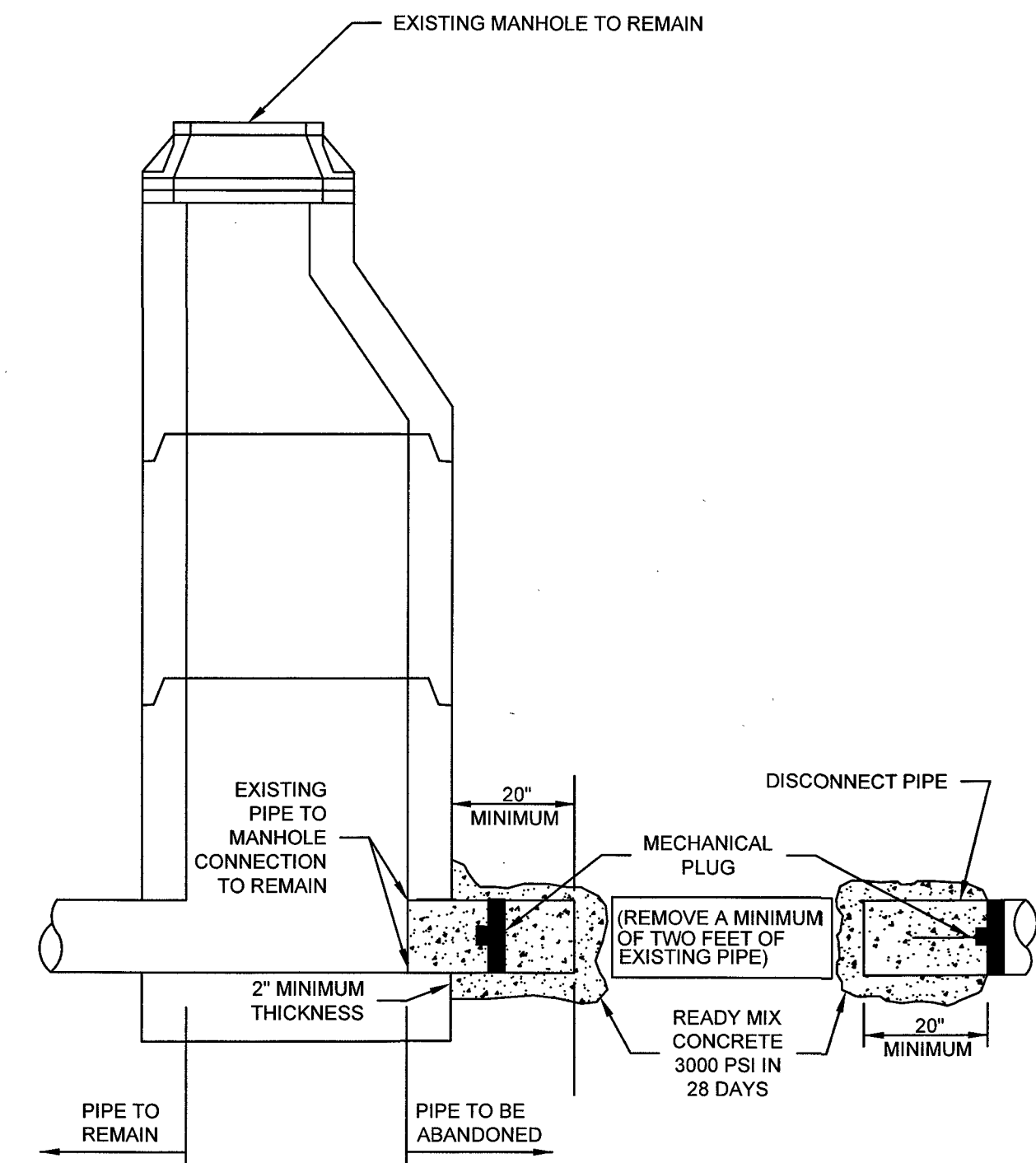
WESTERN VIRGINIA REGIONAL - CONSTRUCTION DETAIL

SANITARY SEWER LATERAL

S-6

01/01/14

1. FOR PIPES 18" AND LARGER PROVIDE A MASONRY BULKHEAD IN LIEU OF MECHANICAL PLUGS.

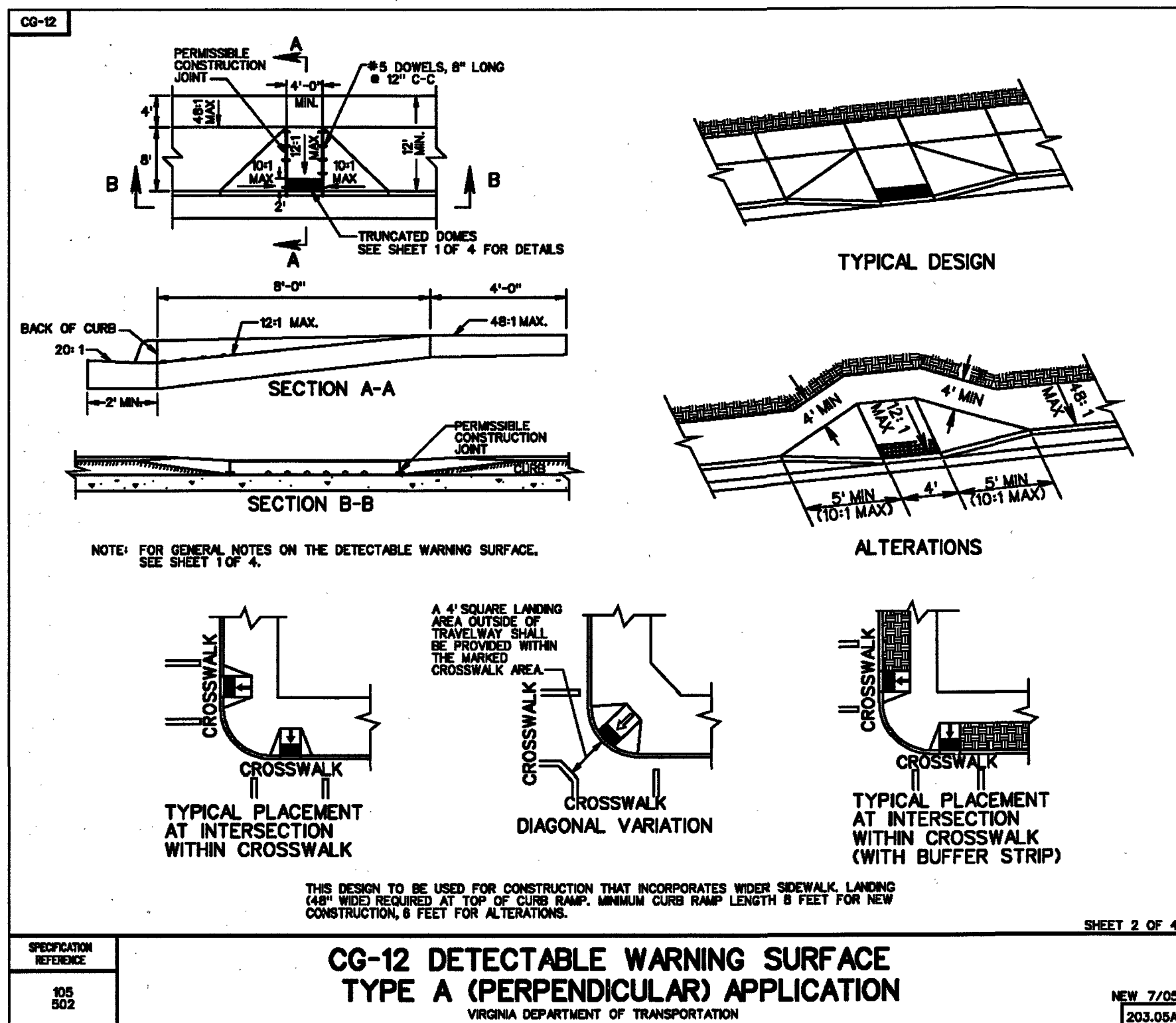


WESTERN VIRGINIA REGIONAL - CONSTRUCTION DETAIL

SANITARY SEWER PIPE ABANDONMENT AT A MANHOLE

S-15

01/01/14

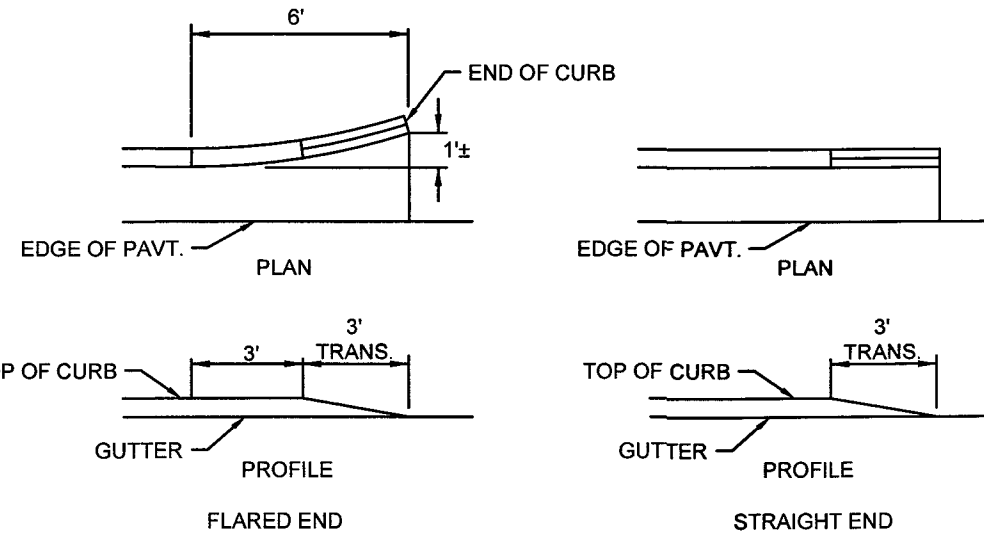


CG-12 DETECTABLE WARNING SURFACE TYPE A (PERPENDICULAR) APPLICATION

VIRGINIA DEPARTMENT OF TRANSPORTATION

SHEET 2 OF 4

NEW 7/05  
203.05A



CURB TRANSITION DETAIL

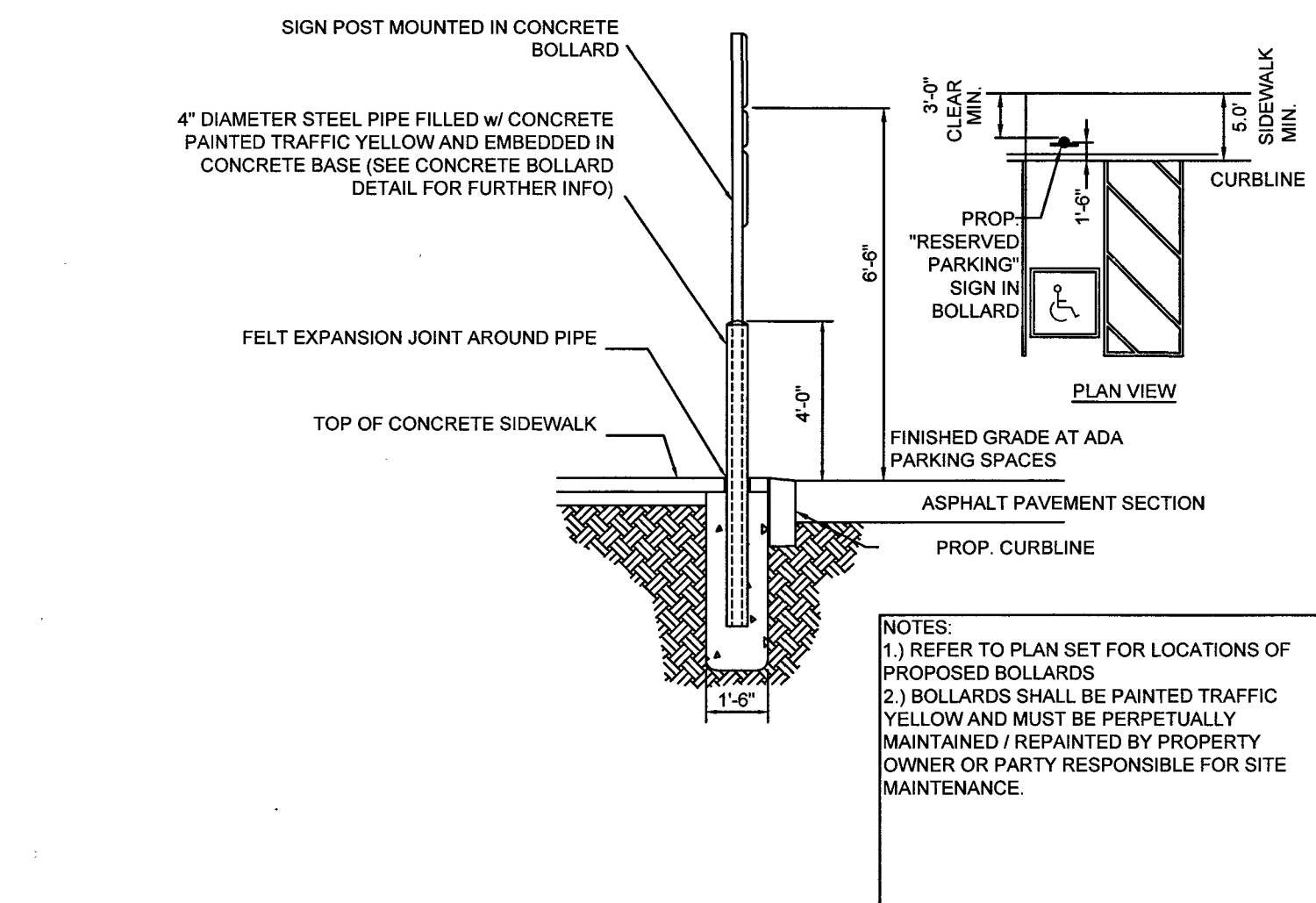
NTS



R1-1  
30"x30"

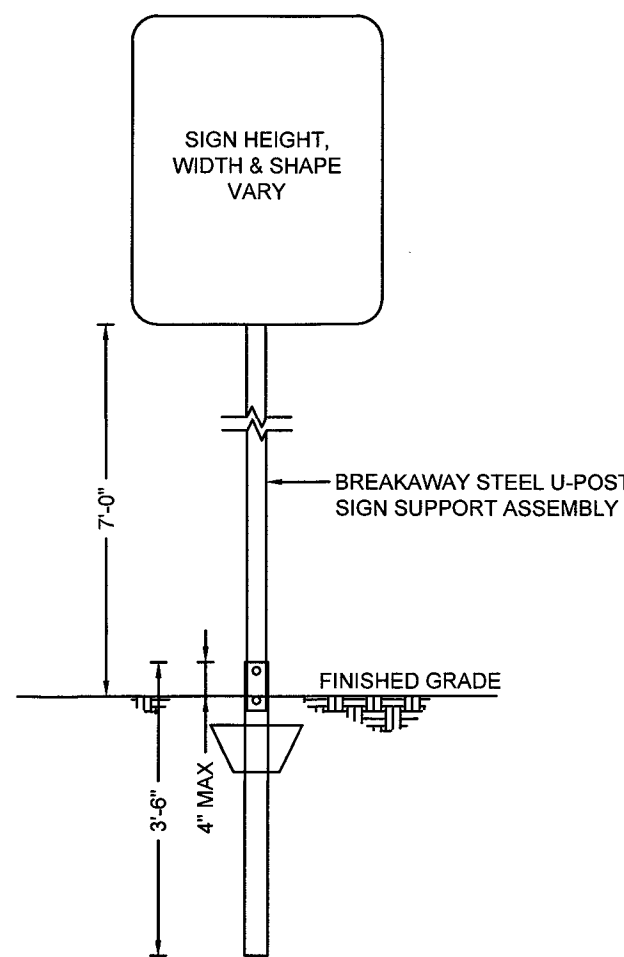
STOP SIGN DETAIL

NTS



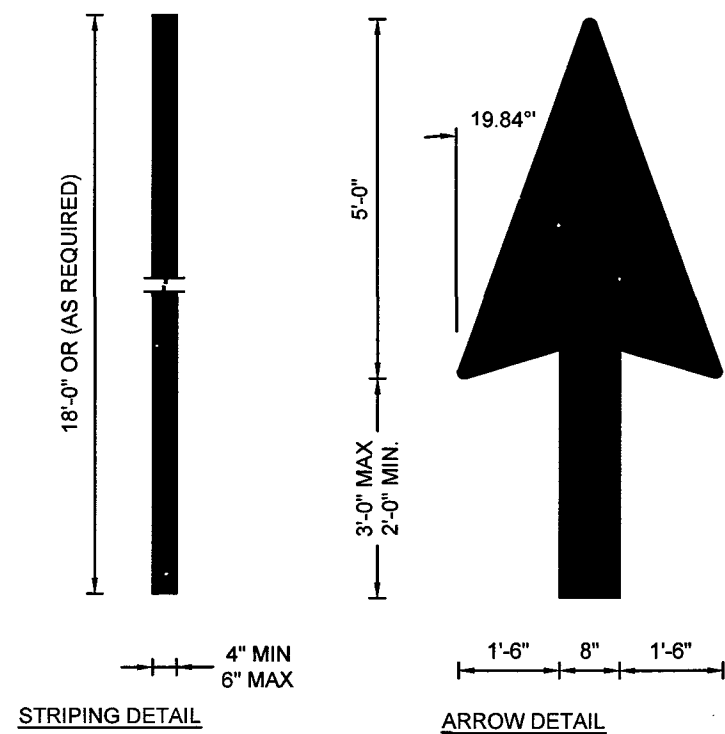
"RESERVED PARKING" SIGN IN BOLLARD DETAIL

NTS



TRAFFIC SIGN POST DETAIL

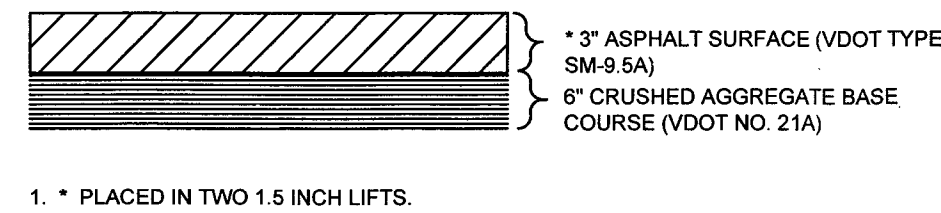
NTS



PAVEMENT STRIPING DETAIL

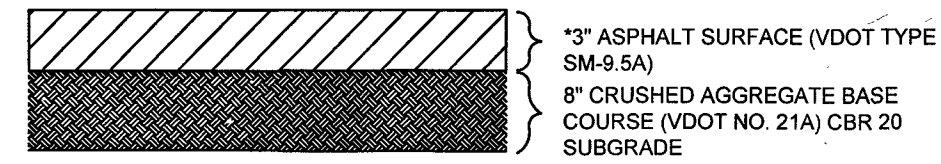
NTS

NOTE: USE NON-REFLECTIVE WHITE PAINT, TYP. BUT USE YELLOW PAINT ON WHEN WHITE PAINT DOES NOT PROVIDE SUFFICIENT CONTRAST.



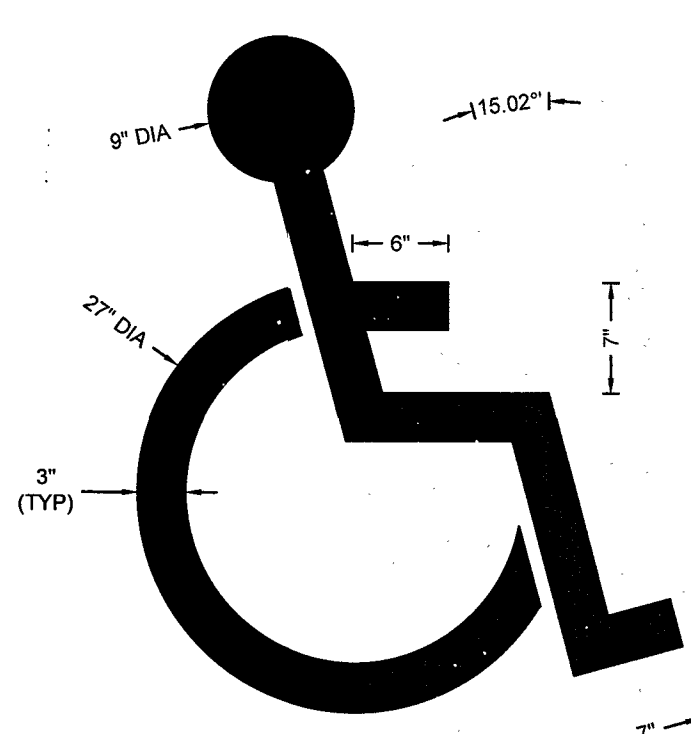
REGULAR DUTY ASPHALT PAVING SECTIONS

NTS



HEAVY DUTY ASPHALT PAVING SECTIONS

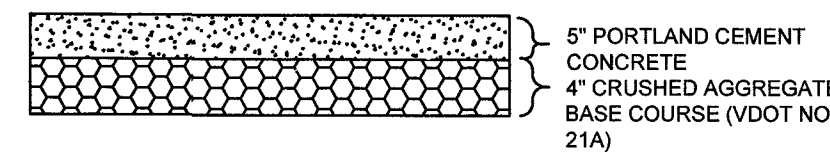
NTS



DETAIL NOTES: COLOR(S) SHALL COMPLY WITH ALL LOCAL REGULATIONS.

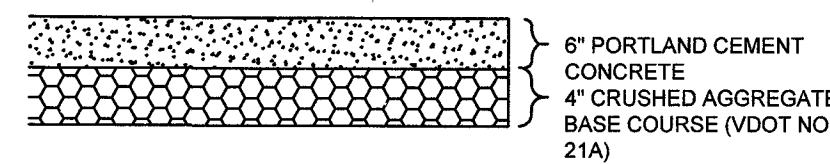
ADA PARKING SYMBOL DETAIL

NTS



LIGHT DUTY CONCRETE PAD SECTIONS

NTS



HEAVY DUTY CONCRETE PAD SECTIONS

NTS

NOTE: PAVEMENT SECTIONS BASED ON GEOTECHNICAL ENGINEERING REPORT DATED JUNE 25, 2014 PREPARED BY TERRACON CONSULTING, INC.

APPROVED  
NOV 10 2015

**CORE STATES GROUP**  
201 S. Maple Avenue  
Anber, PA 19002  
Phone (215) 809-2125  
Fax (215) 809-2124  
Abdenschatz@core-eng.com

DOCUMENTS PREPARED BY CORE STATES, INC., INCLUDING THIS DOCUMENT, ARE TO BE USED ONLY FOR THE SPECIFIC PROJECT AND SPECIFIC USE FOR WHICH THEY WERE INTENDED. ANY EXTENSION OF USE TO ANY OTHER PROJECTS, BY OWNER OR BY ANY OTHER PARTY, WITHOUT THE EXPRESSED WRITTEN CONSENT OF CORE STATES, INC. IS DONE UNLAWFULLY AND AT THE USER'S OWN RISK. IF USED IN A WAY OTHER THAN THAT SPECIFICALLY INTENDED, USER WILL HOLD CORE STATES, INC. HARMLESS FROM ALL CLAIMS AND LOSSES.

**811**  
Know what's below. Call before you dig.  
The contractor is specifically cautioned that the location and location of existing utilities shown on these drawings are based on information provided by the owner. CORE STATES, INC. does not warrant the accuracy of the information provided. THE CONTRACTOR MUST CONTACT THE APPROPRIATE UTILITY COMPANIES TO VERIFY THE LOCATION AND DEPTH OF ALL UTILITIES BEFORE ANY EXCAVATION TO REQUEST EXACT UTILITY LOCATIONS OF UTILITIES.

REV	DATE	COMMENT	BY
1	06-01-15	PER CITY COMMENTS	MV
2	07-15-15	PER CITY COMMENTS	DP/MV

DOCUMENT  
**COMPREHENSIVE DEVELOPMENT PLAN**  
CP150014

PROJECT  
**FAMILY DOLLAR IN ROANOKE, VA**

CLIENT

**BOOS DEVELOPMENT GROUP**

**FAMILY DOLLAR**

SITE LOCATION  
**1626 ORANGE AVENUE NW  
ROANOKE, VA 24017**

ENGINEER SEAL

**COMMONWEALTH OF VIRGINIA**  
AARON D. SCHATZ  
L.P. 041621  
PROFESSIONAL ENGINEER  
SHEET TITLE

**CONSTRUCTION DETAILS**

JOB #:	FAM-16430
DATE:	04-10-15
SCALE:	N/A
DRAWN BY:	KF
CHECKED BY:	AB

SHEET NO.

**C13**  
OF 24