

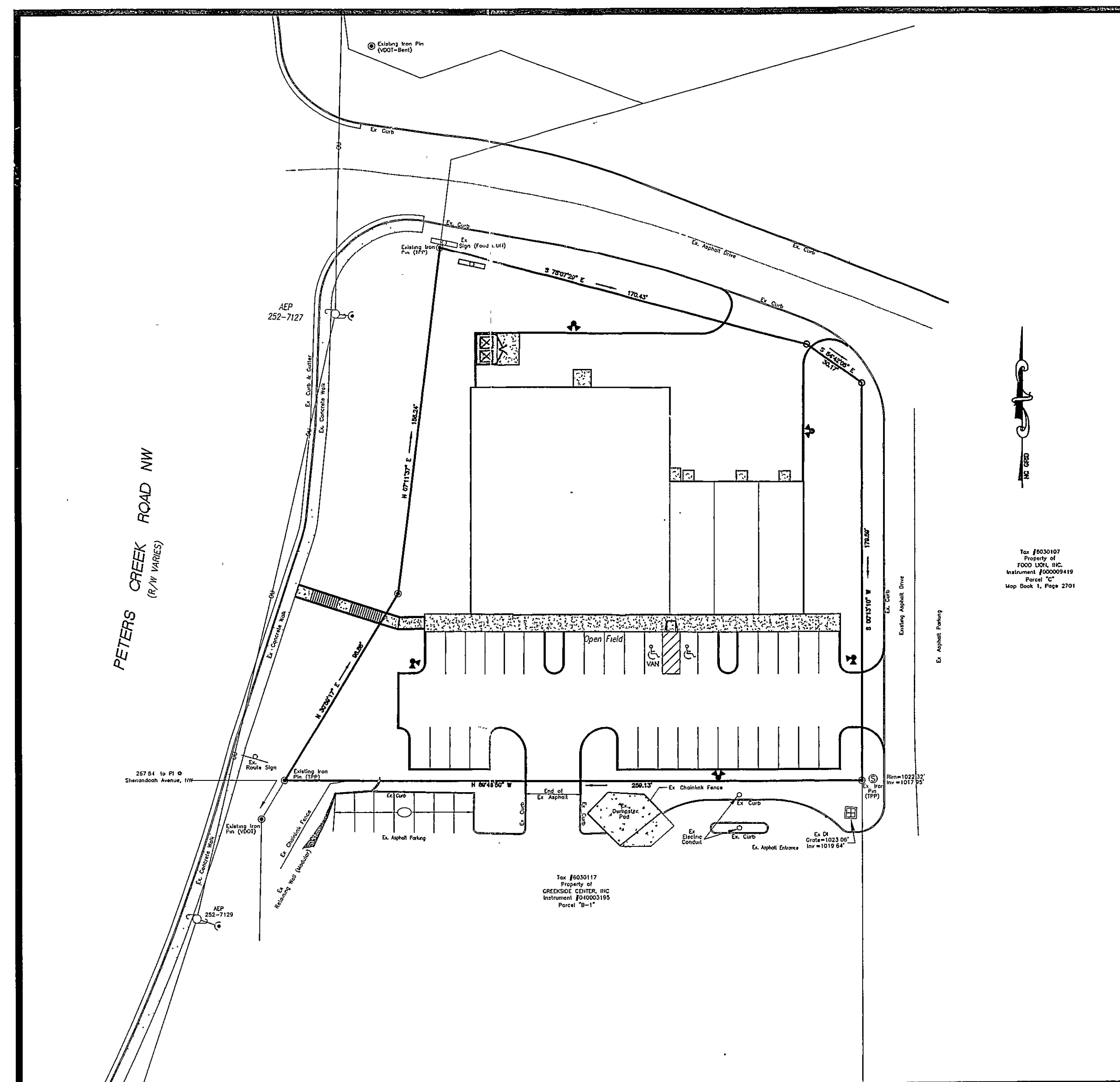
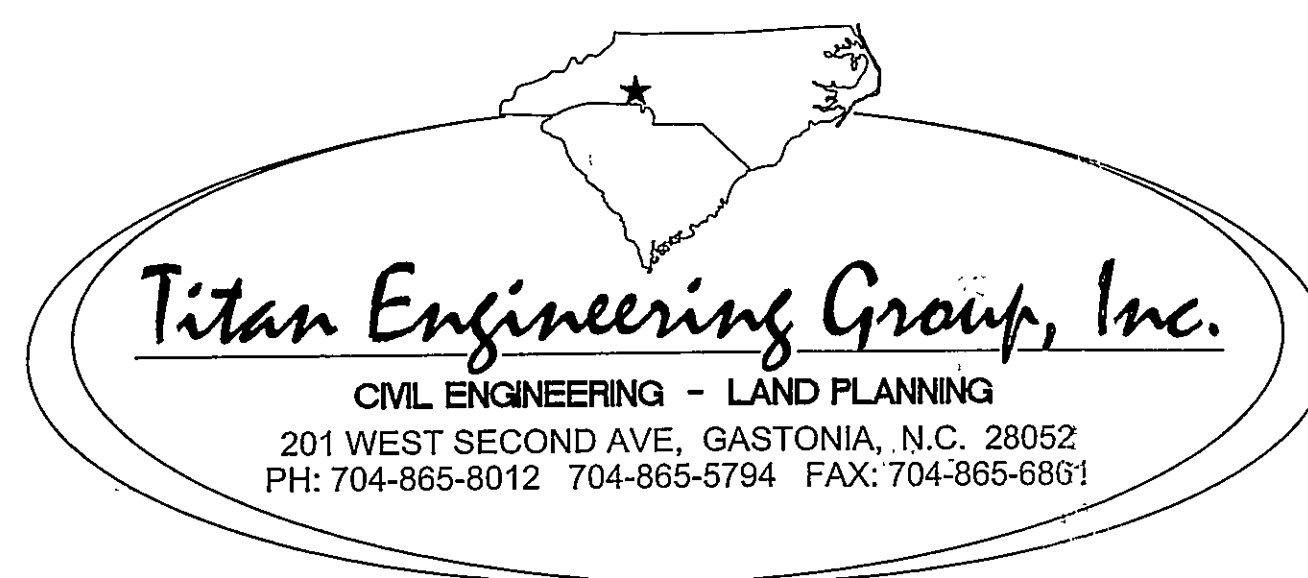
PLANS FOR FAMILY DOLLAR STORE

631 PETERS CREEK ROAD
ROANOKE COUNTY
ROANOKE, VA.

PREPARED FOR:
PREMIER BUILDERS & DEVELOPMENT CO., INC.
103 SOUTH CENTRAL AVE., P.O. BOX 15
LANDIS, N.C. 28088
PHONE: (704)857-4800

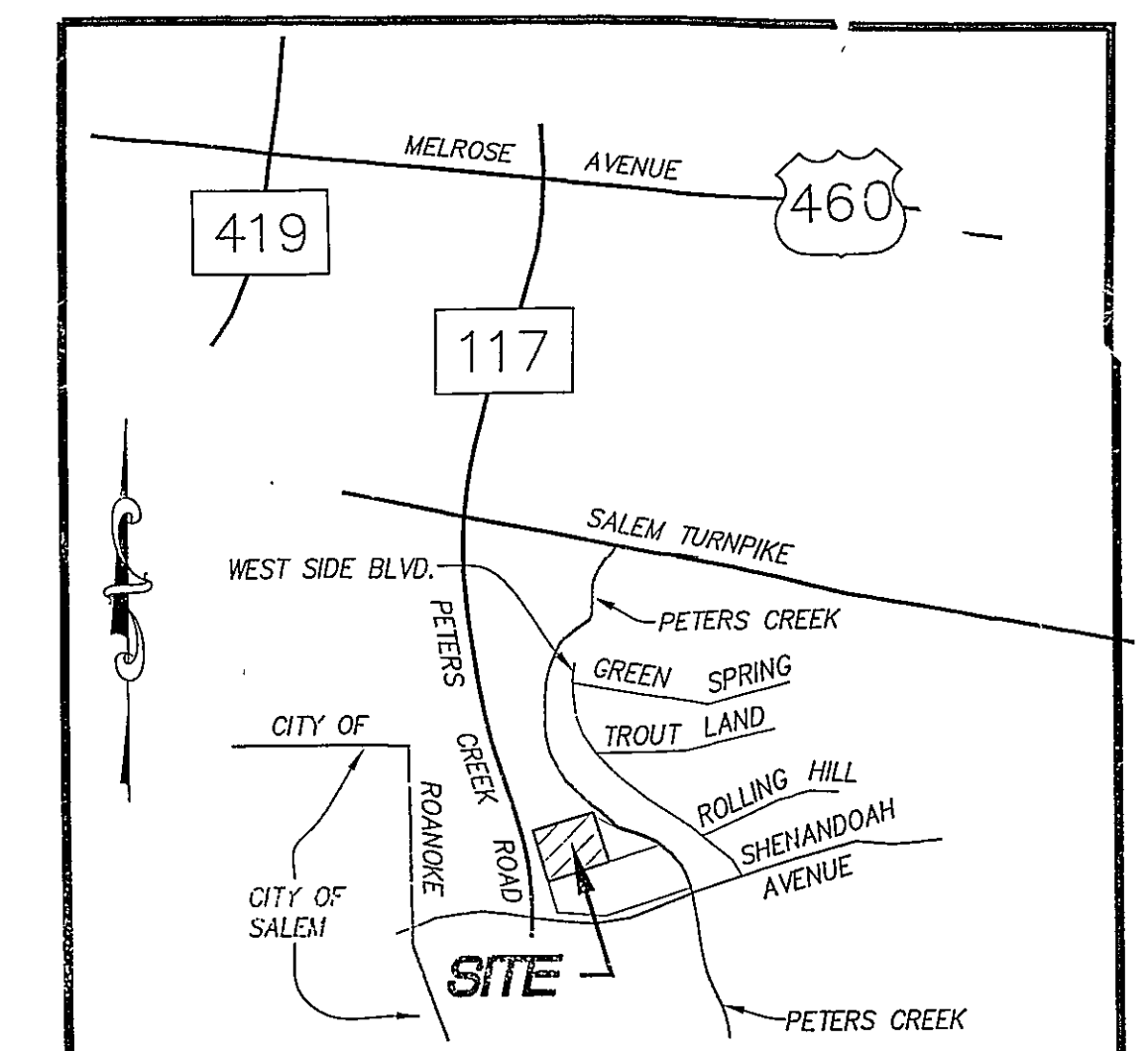
CONSTRUCTION PROCEDURE REQUIREMENTS

- CITY INSPECTIONS** - TO INSURE THE COORDINATION OF TIMELY AND PROPER INSPECTIONS, PRE-CONSTRUCTION CONFERENCE SHALL BE INITIATED BY THE APPLICANT, BUILDING, ETC, WITH THE DEVELOPMENT INSPECTOR. CALL (540) 653-1227 TO ARRANGE A CONFERENCE AT LEAST THREE (3) DAYS PRIOR TO ANTICIPATED CONSTRUCTION.
- RIGHT-OF-WAY EXCAVATION PERMIT** - PRIOR TO THE COMMENCEMENT OF ANY DIGGING, ALTERATION OR CONSTRUCTION WITHIN THE PUBLIC RIGHT-OF-WAY (STREETS, ALLEYS, PUBLIC EASEMENTS), A RIGHT-OF-WAY EXCAVATION PERMIT SHALL BE APPLIED FOR AND OBTAINED BY THE CONTRACTOR FROM THE CITY OF ROANOKE.
- LAND DISTURBANCE PERMIT** - AN APPROVED EROSION AND SEDIMENT CONTROL PLAN FOR ANY BORROW/FILL SITES ASSOCIATED WITH THE PROJECT MUST BE SUBMITTED PRIOR TO THE ISSUANCE OF A LAND DISTURBANCE PERMIT.
- PLANS AND PERMITS** - A COPY OF THE PLANS AS APPROVED BY THE CITY (SIGNED BY THE PROPER CITY OFFICIALS) AND ALL PERMITS ISSUED BY THE CITY SHALL BE AVAILABLE AT THE CONSTRUCTION SITE AT ALL TIMES OF ONGOING CONSTRUCTION.
- LOCATION OF UTILITIES** - THE CONTRACTOR SHALL VERIFY THE LOCATION OF ALL EXISTING UTILITIES PRIOR TO THE COMMENCEMENT OF ANY CONSTRUCTION.
- CONSTRUCTION ENTRANCE** - THE CONTRACTOR SHALL INSTALL AN ADEQUATE CONSTRUCTION ENTRANCE FOR ALL CONSTRUCTION RELATED EGRESS FROM THE SITE. SIZE AND COMPOSITION OF THE CONSTRUCTION ENTRANCE SHALL BE AS SHOWN ON THE PLANS.
- STREETS TO REMAIN CLEAN** - IT SHALL BE THE RESPONSIBILITY OF THE CONTRACTOR TO INSURE THAT THE PUBLIC STREET ADJACENT TO THE CONSTRUCTION ENTRANCE REMAIN FREE OF MUD, DIRT, DUST, AND/OR ANY TYPE OF CONSTRUCTION MATERIALS OR LITTER AT ALL TIMES.
- BARRICADES/DITCHES** - THE CONTRACTOR SHALL MAINTAIN THE INTEGRITY OF ALL EXCAVATED DITCHES AND SHALL FURNISH AND ENSURE THAT ALL BARRICADES PROPER AND NECESSARY FOR THE SAFETY OF THE PUBLIC ARE IN PLACE.
- SEWER AND PAVEMENT REPLACEMENT** - CONSTRUCTION OF SANITARY SEWERS AND THE REPLACEMENT OF PAVEMENT SHALL BE IN ACCORDANCE WITH APPROVED STANDARDS AND SPECIFICATIONS OF THE CITY OF ROANOKE AND THE WESTERN VIRGINIA WATER AUTHORITY.
- APPROVED PLANS/CONSTRUCTION CHANGES** - ANY CHANGE OR VARIATION FROM CONSTRUCTION DESIGN AS SHOWN ON THE OFFICIALLY APPROVED PLANS SHALL BE APPROVED BY THE EROSION AND SEDIMENT CONTROL AGENT PRIOR TO SAID CHANGES OR VARIATION IN CONSTRUCTION BEING MADE.
- FINAL ACCEPTANCE/CITY** - THE OWNER OR DEVELOPER SHALL FURNISH THE CITY OF ROANOKE'S PLANNING BUILDING AND DEVELOPMENT DEPARTMENT WITH A FINAL CORRECT SET OF AS-BUILT PLANS PRIOR TO FINAL ACCEPTANCE BY THE CITY.



OVERALL PLAN
NOT TO SCALE

DEVELOPMENT PLAN APPROVED	
Date	10/4/06
Agent, Planning Commission	P. Stowers
Development Engineer	Conley Taylor
Zoning Administrator	Henry C. Sledge
Any changes to this approved plan must be coordinated with the Agent to the Planning Commission and revisions approved prior to construction.	



VICINITY MAP
NOT TO SCALE

INDEX OF SHEETS

- | | |
|------|-------------------------|
| | COVER SHEET |
| C-1 | SITE PLAN |
| C-2 | GRADING/DRAINAGE PLAN |
| C-2A | EROSION CONTROL PLAN |
| C-3 | UTILITY PLAN |
| C-4 | SITE UTILITY DETAILS |
| C-5 | SITE UTILITY DETAILS |
| C-6 | SITE UTILITY DETAILS |
| C-7 | EROSION CONTROL DETAILS |
| C-8 | STORM DRAIN PROFILES |
| L-1 | LANDSCAPE PLAN |

RECEIVED

OCT 04 2006

CITY OF ROANOKE
PLANNING BUILDING AND DEVELOPMENT

As-Builts 9/28/07
K. Winslow