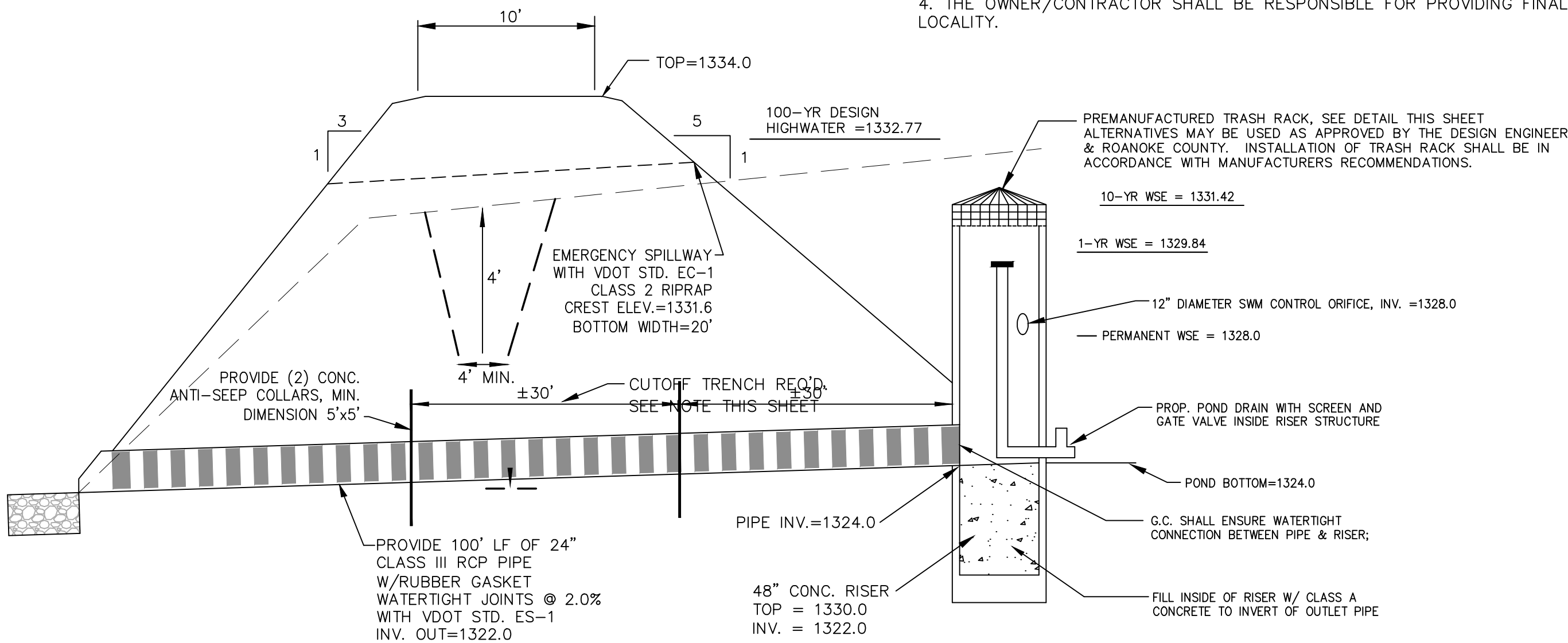
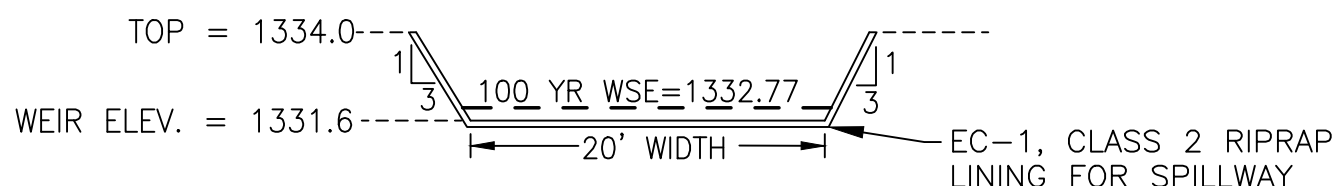


STORM SEWER/STORMWATER MANAGEMENT AS-BUILT NOTES:

1. G.C. SHALL BE RESPONSIBLE FOR COORDINATING ALL REQUIRED AS-BUILTS AT THE APPROPRIATE TIME DURING CONSTRUCTION WITH THE PROJECT ENGINEER/SURVEYOR FOR CONFIRMATION AS REQUIRED BY THE LOCALITY.
2. THE G.C. SHALL BE RESPONSIBLE FOR CONTACTING THE ENGINEER/SURVEYOR TO LOCATE ALL REQUIRED AS-BUILT STORM SEWER IMPROVEMENTS AS REQUIRED BY THE LOCALITY PRIOR TO ANY CURB, STONE, OR ASPHALT PLACEMENT. THIS INFORMATION SHALL BE FORWARDED TO THE LOCALITY FOR REVIEW/APPROVAL.
3. G.C. SHALL BE RESPONSIBLE FOR COORDINATING ANY MANUFACTURER REQUIRED START-UPS & PROVIDING ASSOCIATED PAPERWORK TO THE LOCALITY/ENGINEER ONCE THE MANUFACTURED BMP IS ACTIVE & FUNCTIONAL.
4. THE OWNER/CONTRACTOR SHALL BE RESPONSIBLE FOR PROVIDING FINAL AS-BUILTS REQUIRED BY THE LOCALITY.



RETENTION POND DETAIL  
NO SCALE  
\*SEE SHEET C-13 FOR SEDIMENT BASIN DETAILS.



OUTLET WEIR/EMERGENCY SPILLWAY DETAIL

