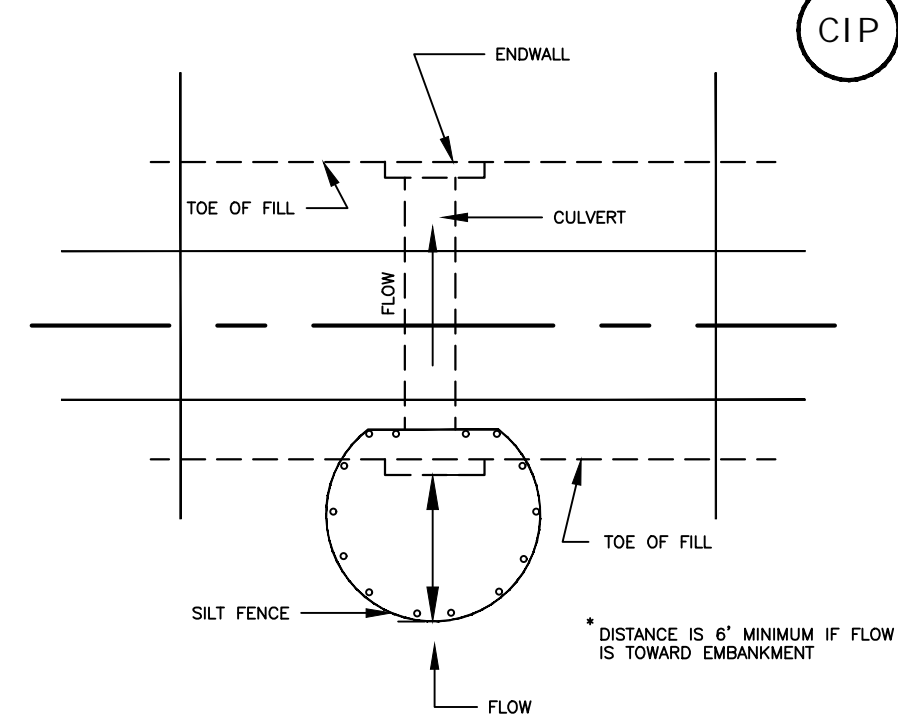
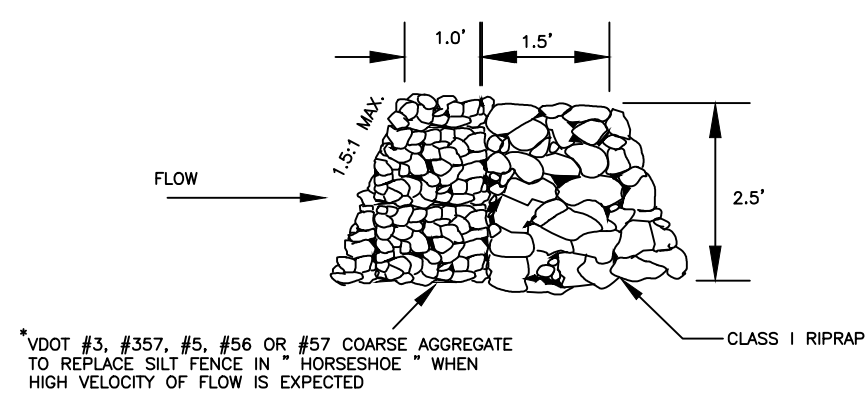


SILT FENCE CULVERT INLET PROTECTION

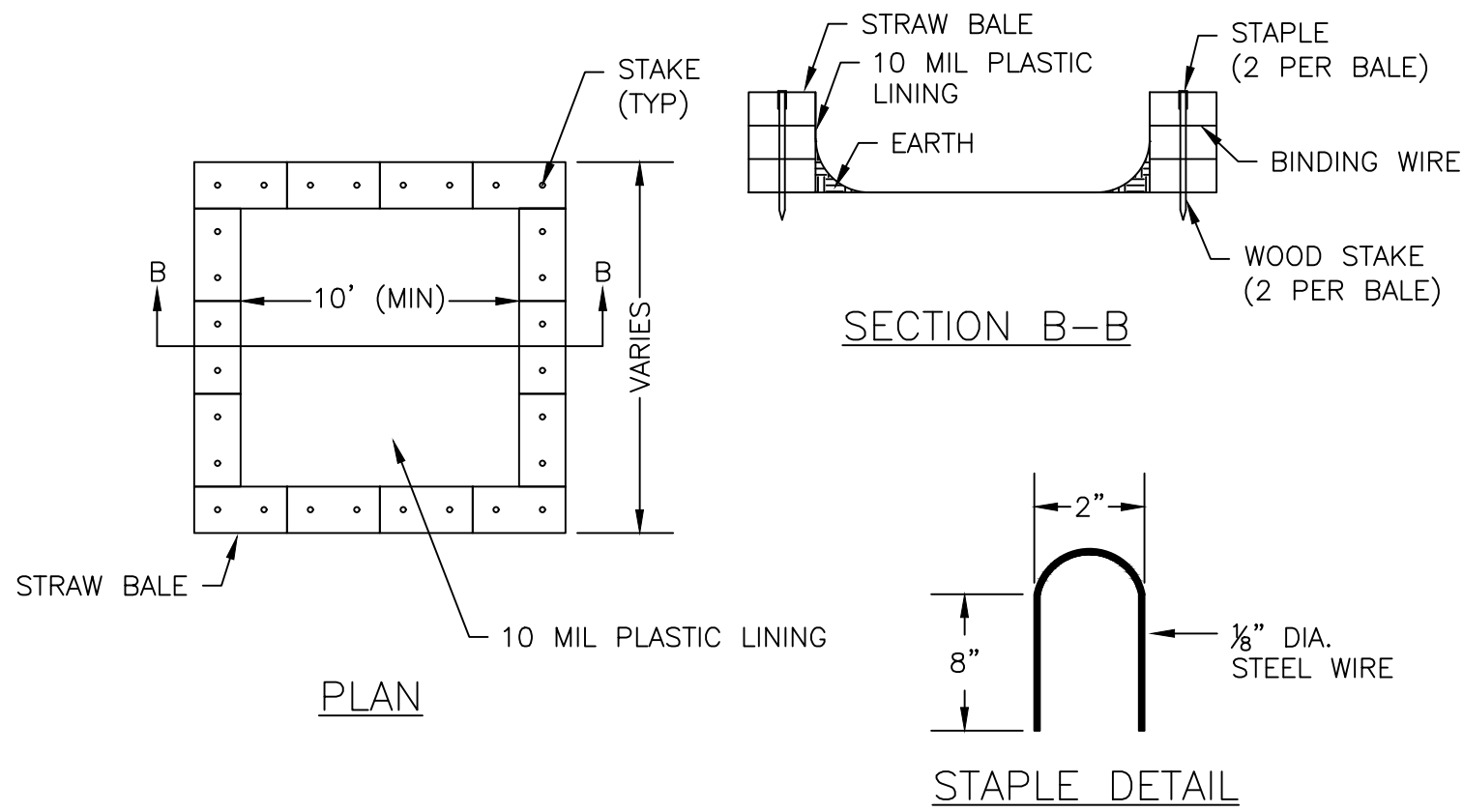


OPTIONAL STONE COMBINATION



SOURCE: ADAPTED FROM VDOT STANDARD SHEETS AND VA DSWC

PLATE 3.08-1



CONCRETE TRUCK WASHOUT DETAIL

GENERAL NOTES:

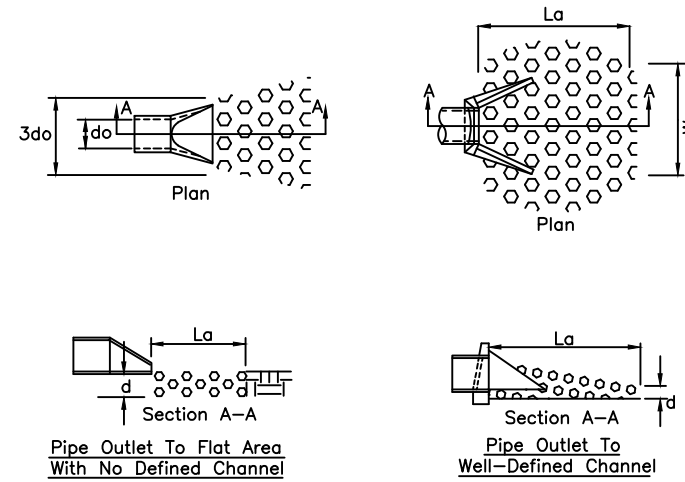
1. ACTUAL SIZE TO BE DETERMINED IN FIELD. A MINIMUM OF 10' WIDE BY 10' LONG AND SIZED TO CONTAIN ALL LIQUID AND SOLID WASTE. A MINIMUM OF 12" FREEBOARD SHALL BE INCLUDED.
2. THE CONCRETE WASHOUT SHALL NOT BE PLACED WITHIN 50' OF STORM DRAINS.
3. EXCESS AND SLUMP TEST SOLIDS SHALL BE PLACED ON PLASTIC LINER UNTIL HARDENED. CONTRACTOR MAY CONSIDER INSTALLING WIRE OR REBAR HOOD FOR LATER PICKUP REMOVAL.
4. INSPECTORS SHALL USE THE WASHOUT FACILITY OR PLASTIC FOR CLEANING OF THEIR TOOLS.

MAINTENANCE NOTES:

1. CHECK ALL CONCRETE WASHOUT FACILITIES DAILY TO DETERMINE IF THEY HAVE BEEN FILLED TO 75% CAPACITY. THE FACILITY SHALL BE CLEANED OUT OR CHANGED WHEN 75% FULL.
2. INSPECT LINERS DAILY TO ENSURE THAT LINERS ARE INTACT AND SIDEWALLS HAVE NOT BEEN DAMAGED BY CONSTRUCTION ACTIVITIES. LINERS SHALL BE REPLACED IF THERE ARE HOLES OR TEARS OBSERVED.
3. CONCRETE WASTE SHALL BE WASHED INTO THE DESIGNATED AREA AND ALLOWED TO HARDEN. THE HARDENED CONCRETE SHALL BE BROKEN UP AND DISPOSED OF OFFSITE PER APPLICABLE VA DEQ RULES AND REGULATIONS. LIQUIDS SHALL NOT BE DISCHARGED DIRECTLY INTO WATERWAYS, STORM DRAINS, SWALES, OR DIRECTLY ONTO THE GROUND.
4. REMOVE LIQUIDS OR COVER STRUCTURE BEFORE PREDICTED STORMS TO PREVENT OVERFLOWS.
5. INSTALL A NEW PLASTIC LINER AFTER EVERY CLEANING.

TABLE 3.32-C (Revised June 2003) PERMANENT SEEDING SPECIFICATIONS FOR APPALACHIAN/MOUNTAIN AREA		
LAND USE	SEED <sup>1</sup> SPECIES	APPLICATION RATES
Minimum Care Lawn (Commercial or Residential)	Tall Fescue <sup>1</sup> Perennial Ryegrass <sup>2</sup> Kentucky Bluegrass <sup>3</sup>	90-100% 0-10% 0-10% TOTAL: 200-250 lbs.
High-Maintenance Lawn	Minimum of three (3) up to five (5) varieties of Kentucky Bluegrass from approved list for use in Virginia <sup>1</sup>	TOTAL: 125 lbs.
General Slope (3:1 or less)	Tall Fescue <sup>1</sup> Red Top Grass or Creeping Red Fescue Seasonal Nurse Crop <sup>3</sup>	125 lbs. 2 lbs. 20 lbs. TOTAL: 150 lbs.
Low-Maintenance Slope (Steeper than 3:1)	Tall Fescue <sup>1</sup> Red Top Grass or Creeping Red Fescue Seasonal Nurse Crop <sup>3</sup> Crownvetch <sup>4</sup>	100 lbs. 2 lbs. 20 lbs. 20 lbs. TOTAL: 150 lbs.
1 - When selecting varieties of turfgrass, use the Virginia Crop Improvement Association (VCIA) recommended turfgrass variety list. Quality seed will bear a label indicating that they are approved by VCIA. A current turfgrass variety list is available at the local County Extension office or through VCIA at 804-746-4884 or at <a href="http://pubs.ces.vt.edu/hm/Turf/turfpublicationspublications2.html">http://pubs.ces.vt.edu/hm/Turf/turfpublicationspublications2.html</a>		
2 - Perennial Ryegrass will germinate faster and at lower soil temperatures than Tall Fescues, thereby providing cover and erosion resistance for seedbed.		
3 - Use seasonal nurse crop in accordance with seeding dates as stated below:		
March, April - May 15 <sup>th</sup> ..... Annual Rye		
May 16 <sup>th</sup> - August 15 <sup>th</sup> ..... Foxtail Millet		
August 16 <sup>th</sup> - September, October..... Annual Rye		
November - February..... Winter Rye		
4 - All legume seed must be properly inoculated. If Flatpea is used, increase to 30 lbs/acre. If Weeping Lovegrass is used, include in any slope or low maintenance mixture during warmer seeding periods, increase to 30-40 lbs/acre.		
FERTILIZER & LIME		
● Apply 10-20-10 fertilizer at a rate of 500 lbs. / acre (or 12 lbs. / 1,000 sq. ft.)		
● Apply Pulverized Agricultural Limestone at a rate of 2 tons/acre (or 90 lbs. / 1,000 sq. ft.)		
NOTE: - A soil test is necessary to determine the actual amount of lime required to adjust the soil pH of site. - Incorporate the lime and fertilizer into the top 4 - 6 inches of the soil by disking or by other means. - When applying Slowly Available Nitrogen, use rates available in Erosion & Sediment Control Technical Bulletin # 4, 2003 Nutrient Management for Development Sites at <a href="http://www.dor.state.va.us/esw/eds.htm#rules">http://www.dor.state.va.us/esw/eds.htm#rules</a>		

PERMANENT SEEDING SPECIFICATIONS



OUTLET PROTECTION STRUCTURE DATA:

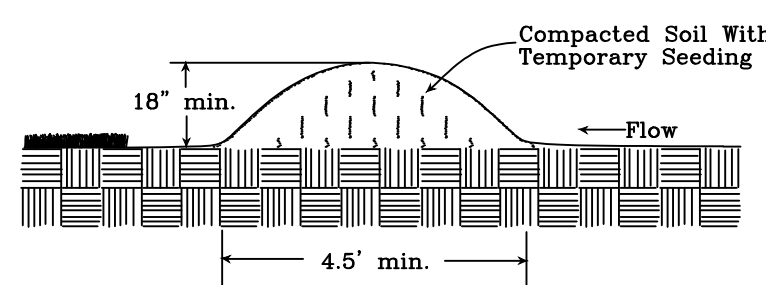
OUTLET PROTECTION #1  
EC-1 CLASS 1 RIP RAP  
LENGTH OF APRON=16' (La)  
WIDTH OF APRON=18' (Wa)  
MIN. STONE SIZE=6"

OUTLET PROTECTION #2  
EC-1 CLASS 1 RIP RAP  
LENGTH OF APRON=13' (La)  
WIDTH OF APRON=14.25' (Wa)  
MIN. STONE SIZE=6"

OUTLET PROTECTION #3  
EC-1 CLASS 1 RIP RAP  
LENGTH OF APRON=5' (La)  
WIDTH OF APRON=6.25' (Wa)  
MIN. STONE SIZE=6"

OUTLET PROTECTION

NOTES:  
1. Apron lining may be rip-rap, grouted rip-rap, or concrete.  
2. La is the length of the rip-rap apron as calculated using plates 1.36d and 1.36e.  
3. d = 1.5 times the maximum stone diameter, but not less than 6".



TEMPORARY DIVERSION DIKE

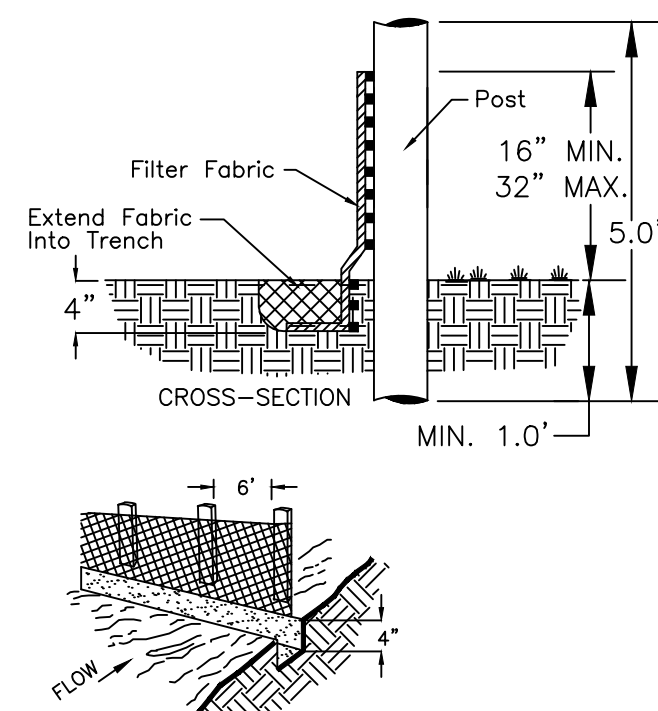
Erosion & Sediment Control Technical Bulletin No. 4  
Nutrient Management for Development Sites

C. When applying maintenance fertilizer on established sod,

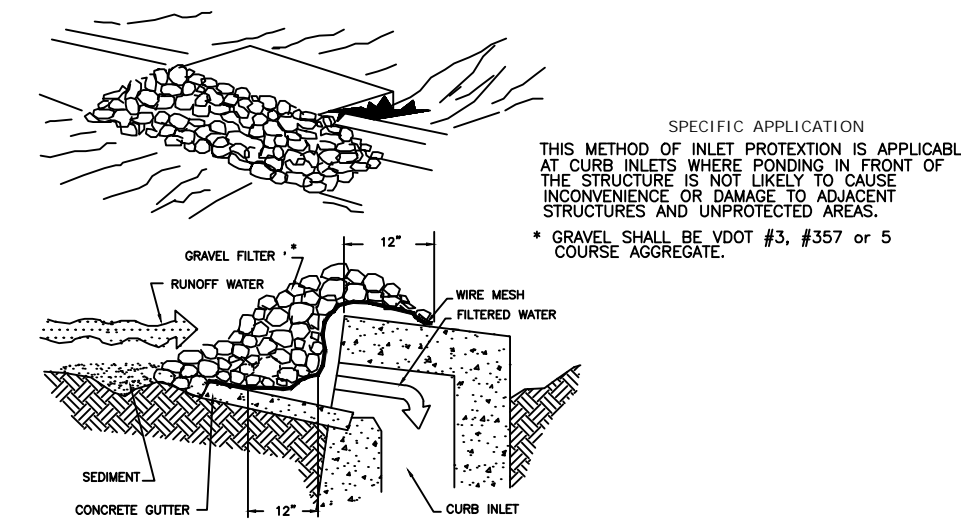
Pounds of nitrogen per 1,000 sq. ft. if the fertilizer is less than 50 percent WIN				
Month	Tall Fescue Perennial Rye	Kentucky Bluegrass	Bermudagrass	Zoysiagrass
September	1	1	0	0
October	1	1	0	0
Early November	0	0	0	0
April	0	0	0	0
May	0-0.5	0-0.05	1	1
June	0	0	1	0
July/August	0	0	0	1
Yearly Lbs. N/1000 sf	2.5	2.5	2	2

Pounds of nitrogen per 1,000 sq. ft. if the fertilizer is more than 50 percent WIN				
Month	Tall Fescue Perennial Rye	Kentucky Bluegrass	Bermudagrass	Zoysiagrass
August 15	1.5	1.5	0	0
October 1	1.5	1.5	0	0
April	0	0	1.5	1.5
May 15	0	0	0	0
June	0	0	1.5	1.5
Yearly Lbs. N/1000 sf	3	3	3	3

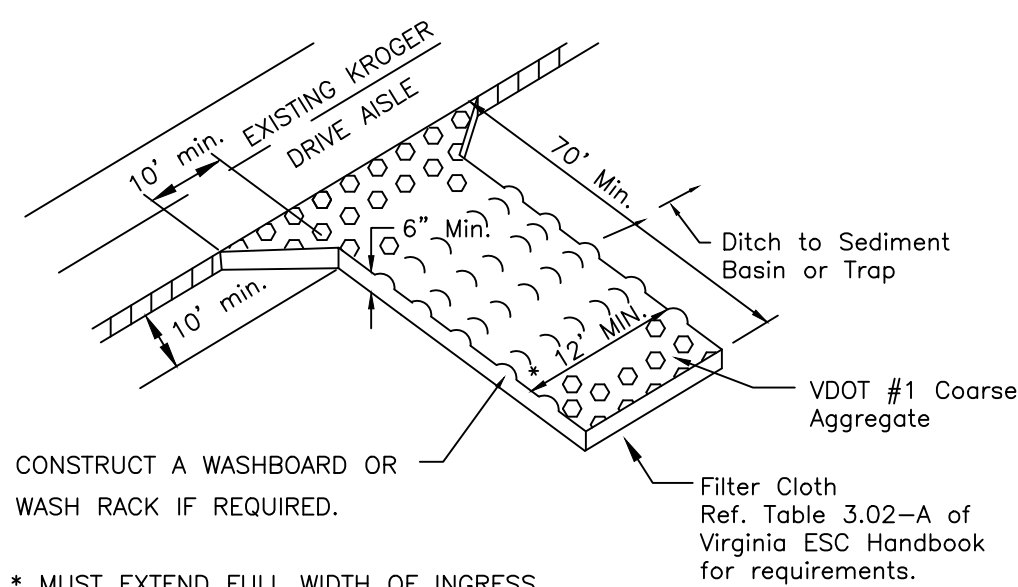
FERTILIZER SPECIFICATIONS AND RATES FOR MANAGEMENT



CONSTRUCTION OF A SILT FENCE  
EROSION AND SEDIMENT CONTROL STANDARD - 3.05



GRAVEL CURB INLET SEDIMENT FILTER

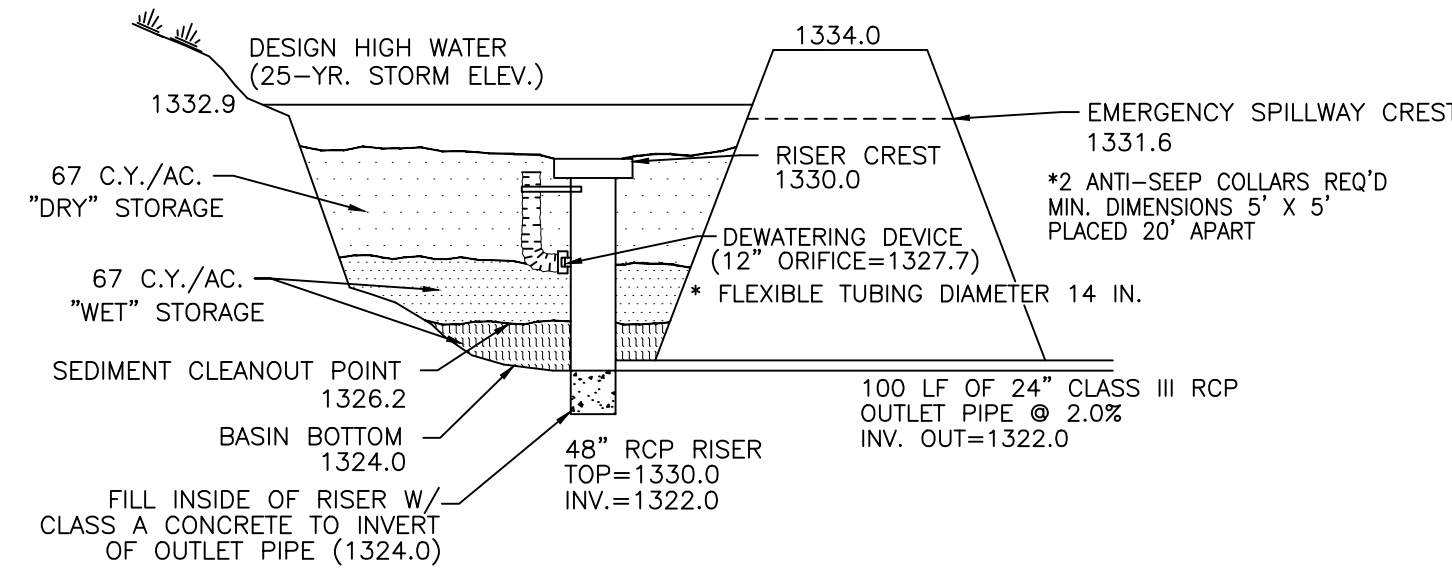


TEMPORARY GRAVEL CONSTRUCTION ENTRANCE

TABLE 3.31-B (Revised June 2003) TEMPORARY SEEDING SPECIFICATIONS QUICK REFERENCE FOR ALL REGIONS		
APPLICATION DATES	SEED SPECIES	APPLICATION RATES
Sept. 1 - Feb. 15	50/50 Mix of Annual Ryegrass (olium multi-florum) & Cereal (Winter) Rye (Secale cereale)	50 - 100 (lb/acre)
Feb. 16 - Apr. 30	Annual Ryegrass (olium multi-florum)	60 - 100 (lb/acre)
May 1 - Aug. 31	German Millet	50 (lb/acre)
FERTILIZER & LIME		
● Apply 10-10-10 fertilizer at a rate of 450 lbs. / acre (or 10 lbs. / 1,000 sq. ft.)		
● Apply Pulverized Agricultural Limestone at a rate of 2 tons/acre (or 90 lbs. / 1,000 sq. ft.)		
NOTE: 1 - A soil test is necessary to determine the actual amount of lime required to adjust the soil pH of site. 2 - Incorporate the lime and fertilizer into the top 4 - 6 inches of the soil by disking or by other means. 3 - When applying Slowly Available Nitrogen, use rates available in Erosion & Sediment Control Technical Bulletin # 4, 2003 Nutrient Management for Development Sites at <a href="http://www.dor.state.va.us/esw/eds.htm#rules">http://www.dor.state.va.us/esw/eds.htm#rules</a>		

TEMPORARY SEEDING SPECIFICATIONS

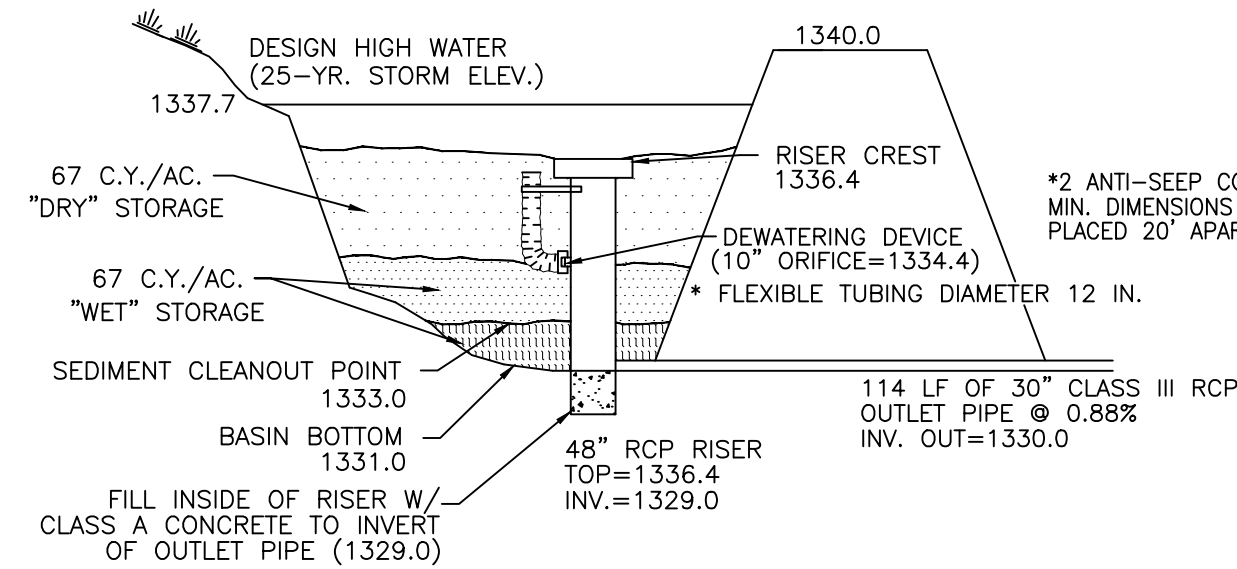
SEDIMENT BASIN SCHEMATIC ELEVATIONS



DESIGN ELEVATIONS WITH EMERGENCY SPILLWAY  
(RISER PASSES 2-YR. EVENT)

SEDIMENT BASIN #1

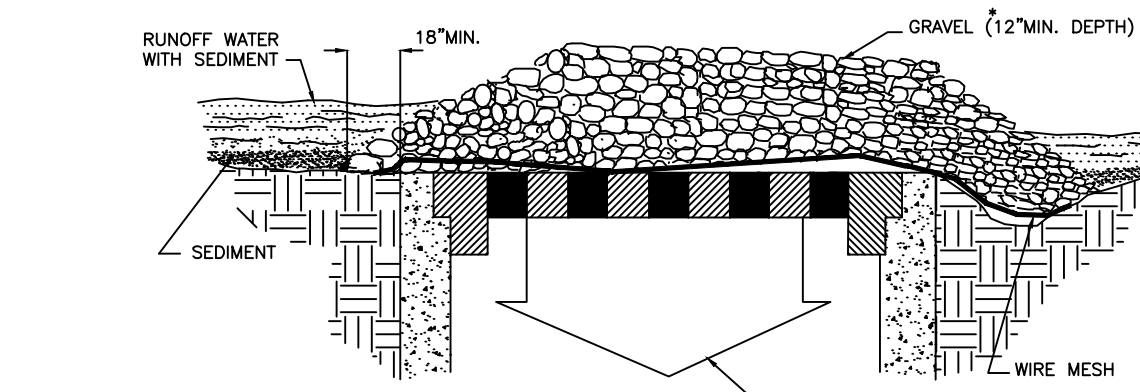
N.T.S.



DESIGN ELEVATIONS WITHOUT EMERGENCY SPILLWAY  
(RISER PASSES 25-YR. EVENT)

SEDIMENT BASIN #2

N.T.S.



SPECIFIC APPLICATION  
This method of inlet protection is applicable where heavy concentrated flows are expected, but not where ponding around the structure might cause excessive inconvenience or damage to adjacent structures and unprotected areas.

\* Gravel shall be VDOT #3, #357 or #5 coarse aggregate.

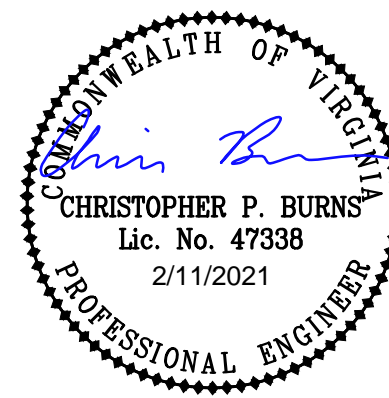
GRAVEL AND WIRE MESH DROP INLET SEDIMENT FILTER



**BALZER & ASSOCIATES**  
PLANNERS / ARCHITECTS  
ENGINEERS / SURVEYORS

Roanoke / Richmond  
New River Valley / Staunton  
Harrisonburg / Lynchburg  
**www.balzer.cc**

1208 Corporate Circle  
Roanoke, VA 24018  
540.772.9580



FIELDSTONE PHASE I

E.S.C. DETAILS

AMSTERDAM DISTRICT  
BOYD COUNTY, VIRGINIA

DRAWN BY: CLL  
DESIGNED BY: CPB  
CHECKED BY: CPB  
DATE: 1/25/2019  
SCALE: AS SHOWN  
REVISIONS:  
4/30/2019  
10/8/2019  
12/5/2019  
10/14/2020  
2/11/2021

**C13**  
PROJECT NO. 04170078.01