

UTILITY OWNERS
ELECTRIC:
APPALACHIAN POWER
40 FRANKLIN ROAD SOUTHWEST
ROANOKE, VIRGINIA 24011
PHONE: 1-800-956-4237
COMMUNICATIONS:
VERIZON
4843 OAKLAND BOULEVARD
ROANOKE, VIRGINIA 24012
PHONE: 1-434-942-8192
GAS:
ROANOKE GAS
519 KIMBLE AVE. N. E.
ROANOKE, VIRGINIA 24030
PHONE: 1-540-938-3800
WATER AND SEWER:
WESTERN VIRGINIA WATER AUTHORITY
3322 HOLLINS RD. N.E.
ROANOKE, VIRGINIA 24012
PHONE: 1-540-853-5641

BENCHMARK:

CHISELED SQUARE ON SOUTHWEST CORNER OF DROP INLET
ELEV. = 968.54'

SURVEY CONTROL:

PT #1 Δ N: 3623890.7970 E: 11054070.3250 ELEV: 967.983
BEARING: S 64° 53' 01" W DIST: 302.969'
PT #2 Δ N: 3623762.1988 E: 11053796.0030 ELEV: 969.638
BEARING: S 72° 23' 35" E DIST: 393.297'
PT #3 Δ N: 3623643.2322 E: 11054170.8761 ELEV: 984.264

NOTES:

- THIS LOCATION SURVEY OF ROANOKE FIRE STATION NO. 7, CITY OF ROANOKE, VA, WAS COMPLETED UNDER THE DIRECT AND RESPONSIBLE CHARGE OF TIMOTHY W. CALDWELL, L.S. FROM AN ACTUAL GROUND SURVEY MADE UNDER MY DIRECT SUPERVISION; THAT THE IMAGERY AND/OR ORIGINAL DATA WAS OBTAINED ON MARCH 5 THRU 14, 2018; THAT THIS PLAT, MAP, OR DIGITAL GEOSPATIAL DATA INCLUDING METADATA MEETS MINIMUM ACCURACY STANDARDS UNLESS OTHERWISE NOTED.
- PROPERTY INFORMATION IS BASED ON DEEDS AND PLATS OF RECORD AND PHYSICAL EVIDENCE FOUND.
- HORIZONTAL AND VERTICAL CONTROL WAS ESTABLISHED USING ROANOKE CITY CONTROL MONUMENTS "WASENA" AND "105 V001".
- CONTOURS AS SHOWN HEREON ARE AT 1-FOOT INTERVALS.
- UNDERGROUND UTILITIES LOCATED BASE ON DESIGNATION BY MISS UTILITY TICKET NO'S. A806100683, A806100692, AND A806100700.

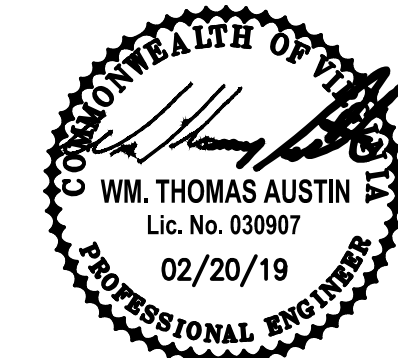
Existing Sanitary Sewer Schedule:

S1	Sewer Manhole Top of Rim = 975.64' Inv. Lateral = 968.93' 10" Inv. In = 970.97' 10" Inv. Out = 968.89'
S2	Sewer Manhole Top of Rim = 970.77
S3	Sewer Manhole Top of Rim = 969.22'
S4	Sewer Manhole Top of Rim = 969.34' 8" Inv. In = 966.20' 8" Inv. Out = 966.06'
S5	Sewer Manhole Top of Rim = 968.64' 8" Inv. In (S4) = 963.56' 10" Inv. In (S1) = 963.17' 10" Inv. In (S9) = 963.27' 10" Inv. Out (S7) = 962.95'
S6	Sewer Manhole Top of Rim = 968.02'
S7	Sewer Manhole Top of Rim = 968.44' 10" Inv. In (S5) = 960.27' 10" Inv. In = 961.24' 12" Inv. Out = 960.14'
S8	Sewer Manhole Top of Rim = 968.29' 18" Inv. In = 961.24' 12" Inv. In (S7) = 959.04' 18" Inv. Out = 958.70'
S9	Sewer Manhole Top of Rim = 977.81' 8" Inv. In (S10) = 974.10' 10" Inv. In (S11) = 974.17' 10" Inv. Out = 974.06'
S10	Sewer Manhole Top of Rim = 984.32' 8" Inv. In = 982.16' 8" Inv. Out = 979.51'
S11	Sewer Manhole Top of Rim = 995.06' 8" Inv. In = 991.18' 10" Inv. In = 990.13' 10" Inv. Out = 989.92'

Existing Storm Drain Schedule:

D1	Curb Inlet Top of Rim = 975.48' 15" Inv. Out (D2) = 967.06'
D2	Storm Drain Manhole Top of Rim = 968.81' 15" Inv. In (D1) = 965.04' 24" Inv. Out (D4) = 964.58' *Closed Sewer Pipe in Manhole
D3	Curb Inlet Top of Rim = 968.20' 18" Inv. Out = 965.15'
D4	Curb Inlet Top of Rim = 968.05' Inv. Lat. from FH = 965.26' Inv. Lat. from FH = 965.36' 24" Inv. In (D2) = 962.60' 24" Inv. Out (D5) = 962.51'
D5	Curb Inlet Top of Rim = 968.40' 24" Inv. In (D4) = 961.88' 43" x 27" Arch Pipe Inv. In (D7) = 959.29' 6" x 4" Box Culvert Inv. Out (D6) = 959.54'
D6	Storm Drain Manhole Top of Rim = 968.07' Box Culvert Flow = 957.57'
D7	Storm Drain Manhole Top of Rim = 968.39' 30" Inv. In (D8) = 959.62' 43" x 27" Arch Pipe Inv. Out (D5) = 959.44'
D8	Storm Drain Manhole Top of Rim = 968.30' 30" Inv. In (D10) = 961.60' 30" Inv. Out (D7) = 961.02'
D9	Curb Inlet Top of Rim = 968.52' 18" Inv. Out = 964.74'
D10	Storm Drain Manhole Top of Rim = 984.09' 18" Inv. In (D11) = 974.81' 30" Inv. In (D13) = 973.87' 30" Inv. Out (D8) = 973.48'
D11	Curb Inlet Top of Rim = 984.93' 18" Inv. Out (D10) = 976.44'
D12	Curb Inlet Top of Rim = 985.95' 18" Inv. Out = 981.41'
D13	Storm Drain Manhole Top of Rim = 1002.22' 18" Inv. In = 997.32' 30" Inv. In = 994.47' 30" Inv. Out (D10) = 994.01'
D14	Trench Drain Top of Grate @ Inv. = 968.94' 6" Inv. Out = 967.94'

GENERAL NOTES



PROJECT TITLE

**ROANOKE FIRE-EMS
STATION #7**

BID SET

SFC S

SFCS Inc. • 305 South Jefferson Street
Roanoke, Virginia 24011.2003
540.344.6664 • Fax 540.343.6925
www.sfcs.com

PROJECT DESIGNER	:	
PROJECT ARCHITECT	:	
PROJECT ENGINEER	:	WTA
DRAWN BY	:	ARB
CHECKED BY	:	WTA
APPROVED BY	:	WTA
NO.	REVISION DESCRIPTION	DATE

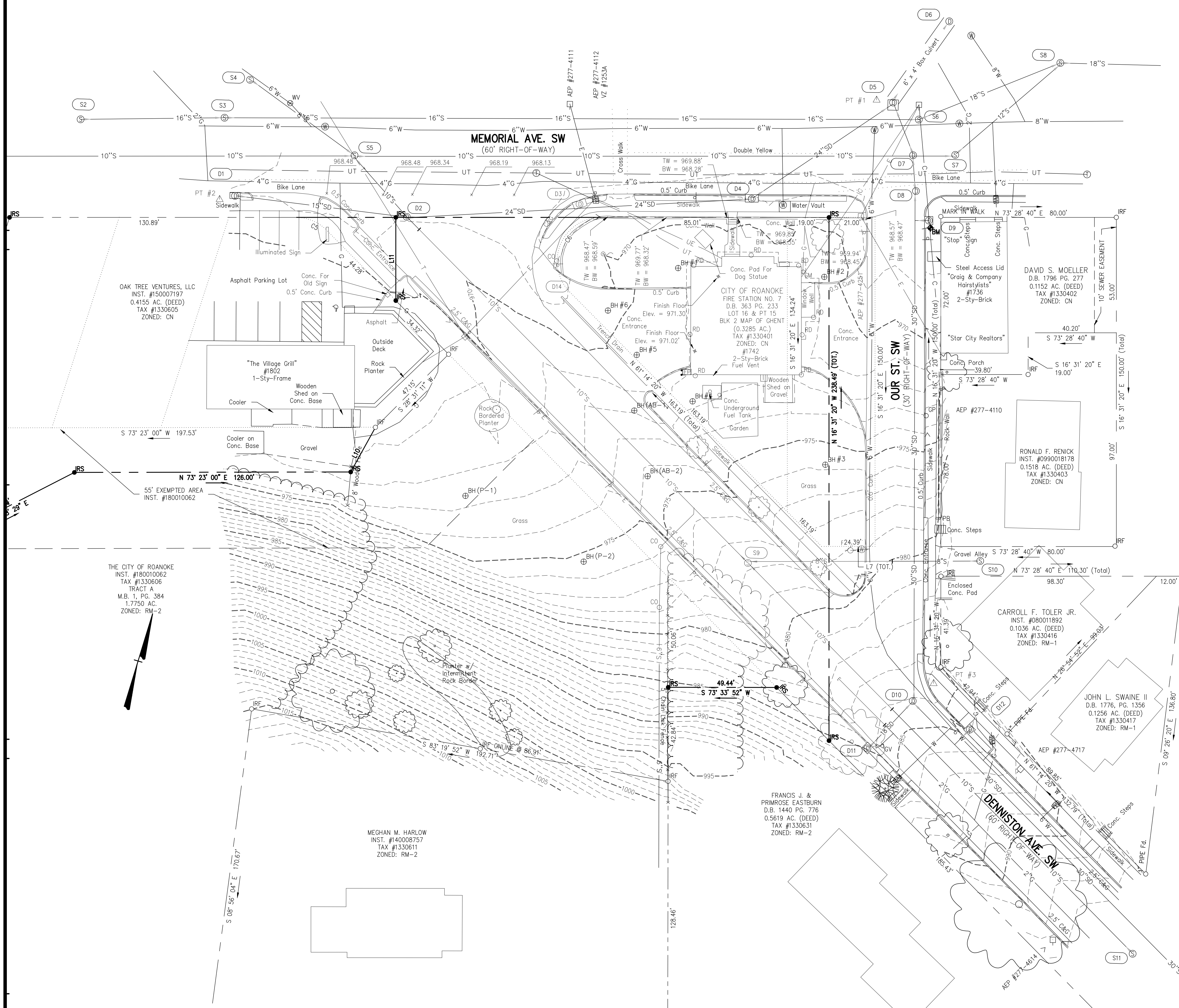
DRAWING TITLE

**EXISTING CONDITIONS /
SITE SURVEY**

COMM. NO. 17503.00	DATE FEBRUARY 20, 2019
DRAWING	SHEET

C1.1

OF



CITY PLAN NO.: CP19-0003

