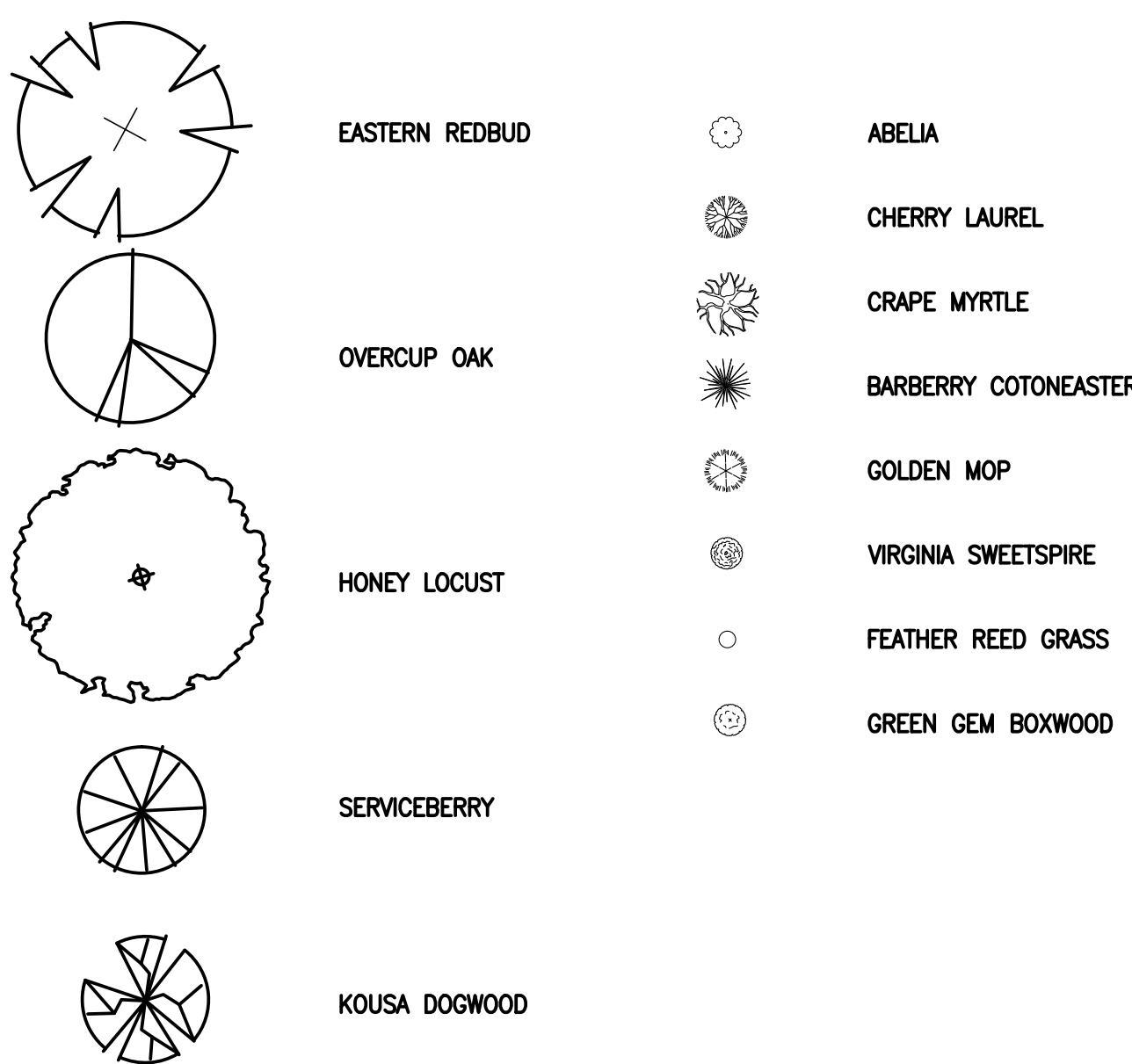


PLANT SCHEDULE

TREES		KEY	CATEGORY	SCIENTIFIC NAME	COMMON NAME	SIZE (MIN.)	QUANTITY	TYPE	NOTES	SF CANOPY (20 YR)
DW	ORNAMENTAL	OR	ORNAMENTAL	Cornus kousa	KOUSSA DOGWOOD	2" caliper	3	DECIDUOUS	B&B	531
CM	ORNAMENTAL	CR	ORNAMENTAL	Lagerstroemia indica 'Hopi'	CRAPE MYRTLE	5'-6'	4	DECIDUOUS	Multi-stemmed	452
ER	ORNAMENTAL	ER	ORNAMENTAL	Cercis canadensis	EASTERN REDBUD	2" caliper	9	DECIDUOUS	B&B	1593
OO	LARGE SHADE	OO	LARGE SHADE	Quercus lyrata	OVERCUP OAK	2" caliper	6	DECIDUOUS	B&B	1524
HL	LARGE SHADE	HL	LARGE SHADE	Calidictia tricanthos	HONEYLOCUST 'IMPERIAL SEEDLESS'	2" caliper	8	DECIDUOUS	B&B	2512
IV	SMALL TREE	IV	SMALL TREE	Alnancher grandiflora	SERVICEBERRY	5'	4	DECIDUOUS	Multi-stemmed	804
TOTAL										7416
SHRUBS		A	SHRUB	Abelia 'Edward Goucher'	ABELIA	18"	9	DECIDUOUS	Flowering	
CL	SHRUB	CL	SHRUB	Prunus laurocerasus 'Otto Luyken'	CHERRY LAUREL	18"	15	EVERGREEN	Flowering	
BC	SHRUB	BC	SHRUB	Cotoneaster dammeri 'Coral Beauty'	BARBERRY COTONEASTER	18"	9	EVERGREEN		
CP	SHRUB	CP	SHRUB	Chamaecyparis pisifera 'Golden Mop'	GOLDEN MOP	18"	9	EVERGREEN		
VS	SHRUB	VS	SHRUB	Itea virginica 'Henry's Garnet'	VIRGINIA SWEETSPIRE	18"	4	DECIDUOUS	Flowering	
GB	SHRUB	GB	SHRUB	Buxus 'Green Gem'	GREEN GEM BOXWOOD	12'x18"	23	EVERGREEN		
GRASSES		RG	GRASS	Calamagrostis x acutiflora 'Karl Foerster'	FEATHER REED GRASS	12" MIN	20	ORNAMENTAL		

PLANTING LEGEND



PLANTING SOIL SPECIFICATION:

1. SHALL BE A FERTILE, FRIABLE SOIL TYPICAL OF THE LOCALITY. IT SHALL BE WELL DRAINED WITHOUT MIXTURE OF SUBSOIL. IT SHALL BE CLEAN AND FREE OF CLAY LUMPS, STONES, ROOTS, AND DELETERIOUS SUBSTANCES TWO INCHES OR MORE IN DIAMETER. IT SHALL BE A MIXTURE OF THE FOLLOWING MATERIALS IN QUANTITIES SPECIFIED:
 - a. FOR TREE PLANTING PITS USE PLANTING SOIL 'A'. IT SHALL BE A MIXTURE OF THE FOLLOWING MATERIALS IN QUANTITIES SPECIFIED: ONE PART LOAM, AND THREE PARTS SOIL FROM THE HOLE, AND ONE PART ORGANIC SOIL AMENDMENTS. IT WILL HAVE A 'PH' FACTOR BETWEEN 5.5 AND 7.0. IN HOLES WHICH WERE IN ROCK, REPLACE ROCK WITH TOPSOIL FROM PROJECT AREA.
 - b. PIT PLANTED SHRUBS SHALL RECEIVE THE SAME SOIL MIX AS TREES. USE PLANTING SOIL 'A'. IN HOLES WHICH WERE IN ROCK, FILL WITH TOPSOIL FROM PROJECT AREA.
 - c. FOR SHRUB BEDS AND FLOWER BEDS, USE PLANTING SOIL 'B'. THIS SOIL SHALL BE MIXTURE OF: FIVE PARTS TOPSOIL, ONE PART ORGANIC SOIL AMENDMENTS. IT WILL HAVE A 'PH' FACTOR BETWEEN 6.0 AND 7.0.

TREE CANOPY REQUIREMENTS TABULATIONS:

OVERALL TREE CANOPY REQUIREMENTS (SEC. 36.2-644):
MINIMUM TREE CANOPY REQUIRED (SEC. 36.2-328) = 10-PERCENT OF LOT AREA

DETERMINED TO BE 10-PERCENT OF DEVELOPED AREA)
- DEVELOPED AREA 0.99 ACRES (43,124 S.F.)
- 10% OF DEVELOPED AREA = 4,312 S.F.

PROVIDED TREE CANOPY:

LARGE TREES:
- 6 @ 254 SF/EA = 1,524 SF
- 8 @ 314 SF/EA = 2,512 SF

SMALL TREES:
- 12 @ 177 SF/EA = 2,124 SF
- 4 @ 113 SF/EA = 452 SF
- 4 @ 201 SF/EA = 804 SF

EXISTING TO REMAIN: N/A
TOTAL = 7,416 S.F. (17.2 PERCENT)

PARKING AREA LANDSCAPING (SEC. 36.2-648):

TREE CANOPY REQUIRED:
- FOR 21 OR MORE PARKING SPACES = 20-PERCENT (TABLE 648-1)
- PROPOSED PARKING AREA = 9,785 S.F. (0.2246 ACRES)
- REQUIRED PARKING AREA TREE CANOPY (20-PERCENT) = 1,957 S.F.

PROVIDED:

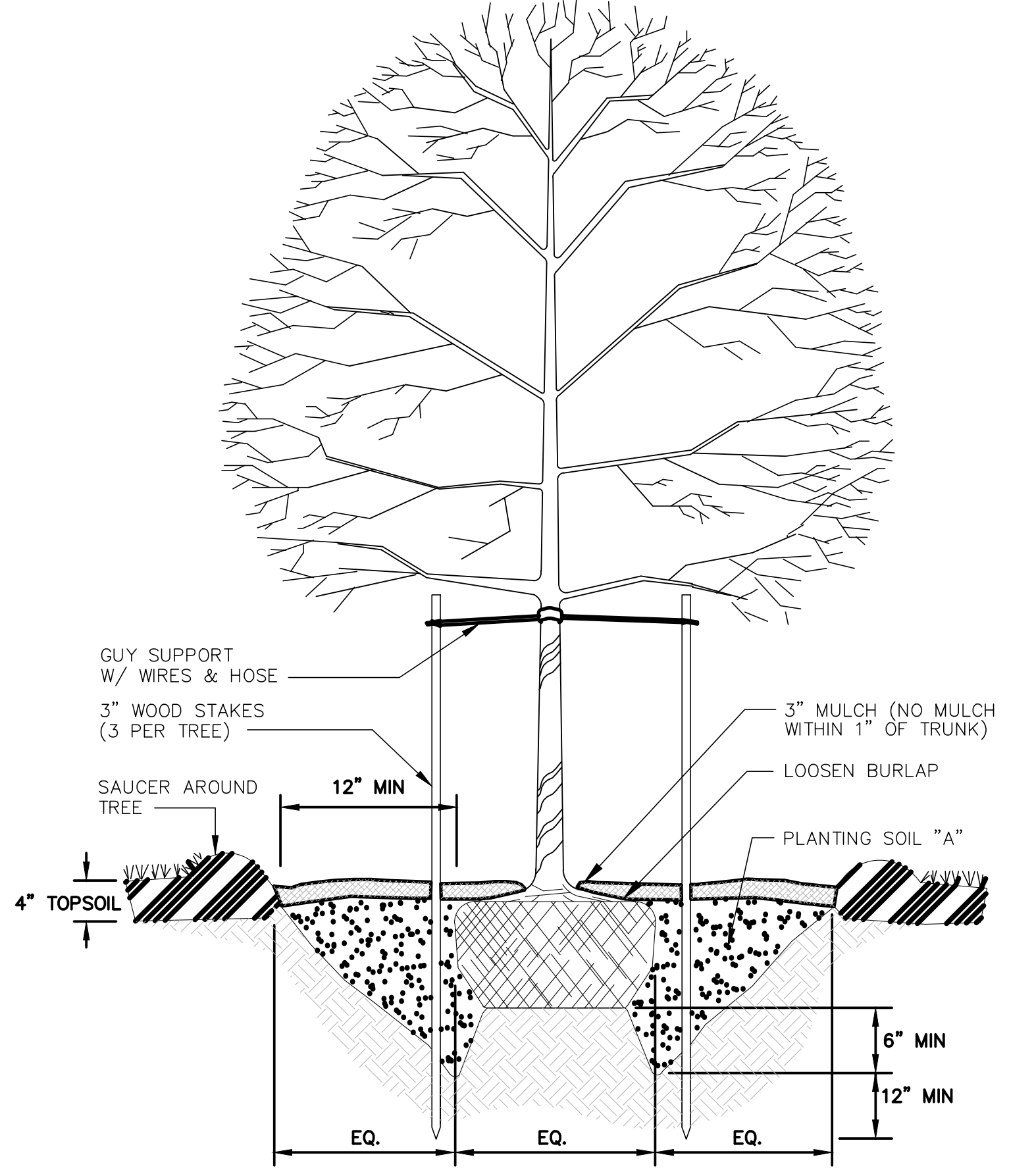
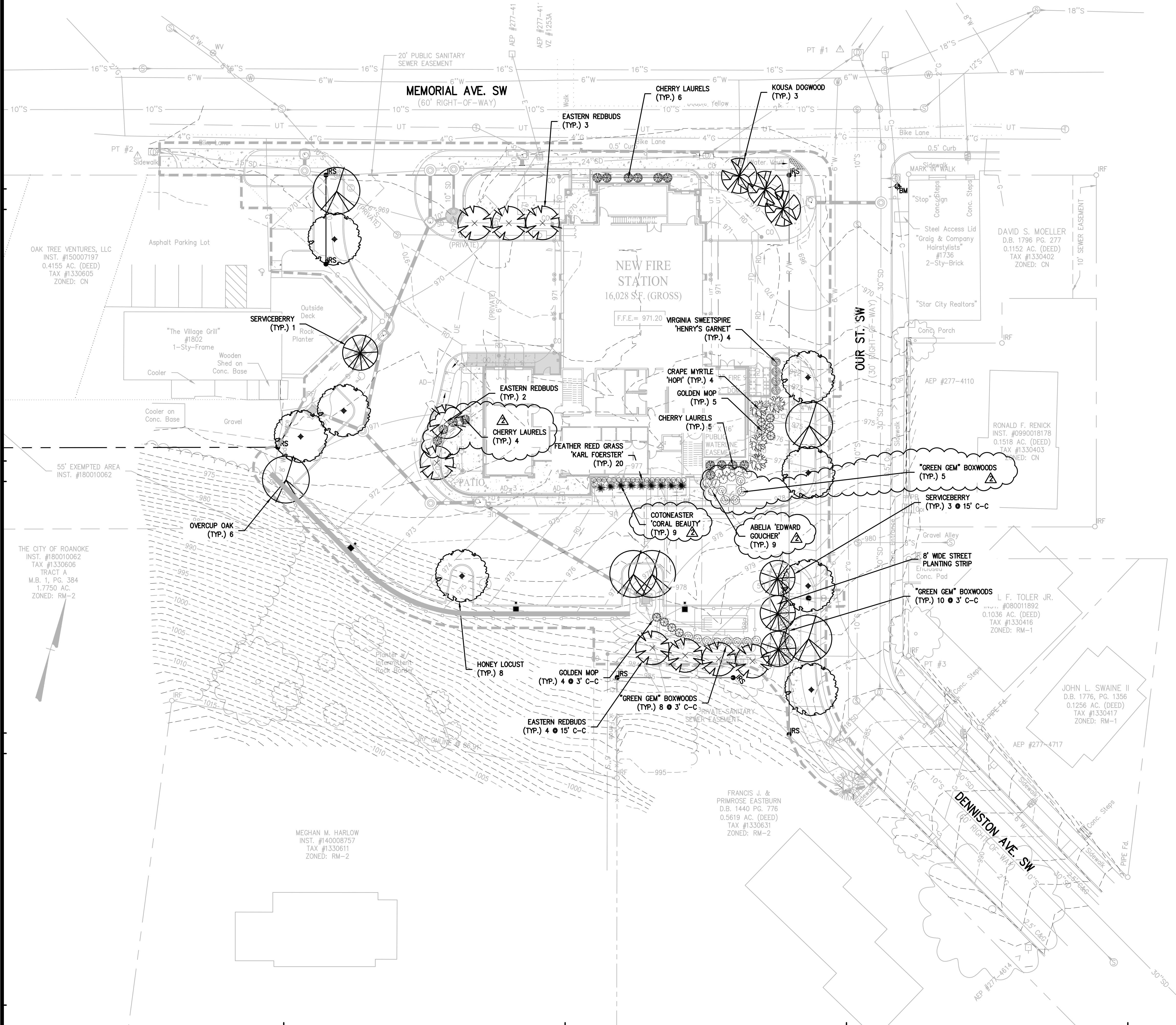
PROVIDED IN "INTERIOR OF PARKING AREA":
- 3 @ 254 SF/EA = 762 SF
- 3 @ 314 SF/EA = 942 SF
- SUB-TOTAL = 1,704 SF

PROVIDED IN "PERIMETER OF PARKING AREA":
- 2 @ 177 SF/EA = 354 SF
- 3 @ 201 SF/EA = 603 SF
- SUB-TOTAL = 957 SF

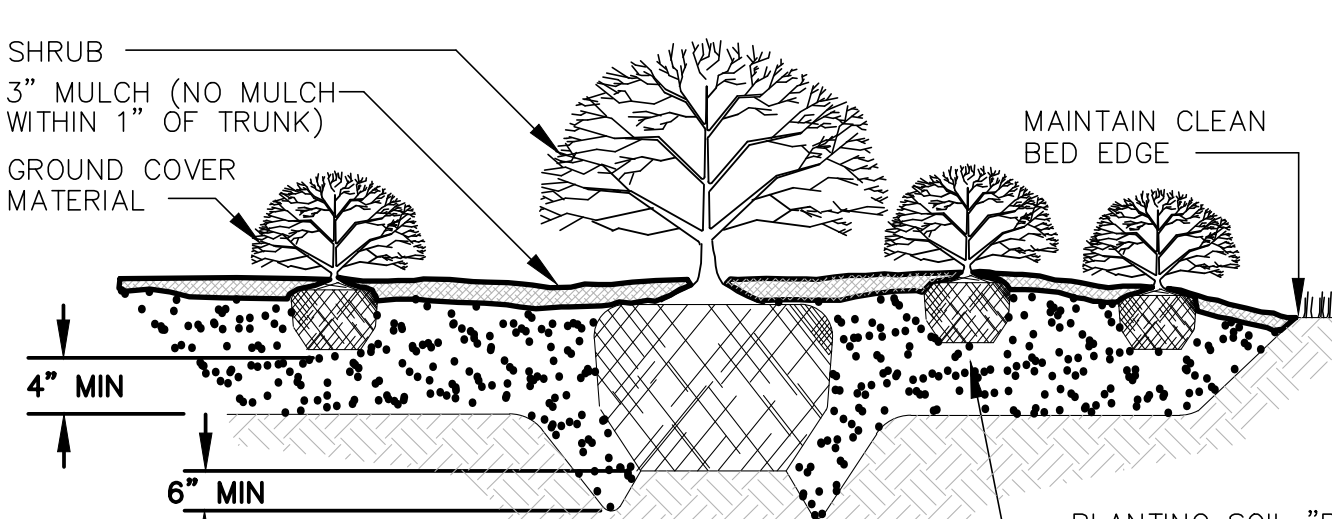
TOTAL = 2,661 S.F. (27.2-PERCENT)

PARKING BUFFER: REQUIRED ALONG OUR STREET
PROVIDED:
3 SMALL DECIDUOUS TREES AT 15' C-C
10 EVERGREEN SHRUBS AT 3' C-C
GENERATOR SCREENING REQUIRED AT S.E. CORNER
PROVIDED:
4 SMALL DECIDUOUS TREES AT 15' C-C
12 EVERGREEN SHRUBS AT 3' C-C

Mattern & Craig
ENGINEERS/SURVEYORS
701 FIRST STREET, S.W.
ROANOKE, VIRGINIA 24016
(540) 345-9342
FAX (540) 345-7691

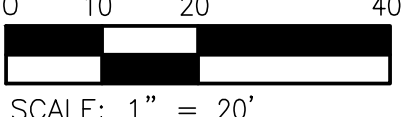


TYPICAL TREE PLANTING DETAIL UNDER 2-1/2" CALIPER

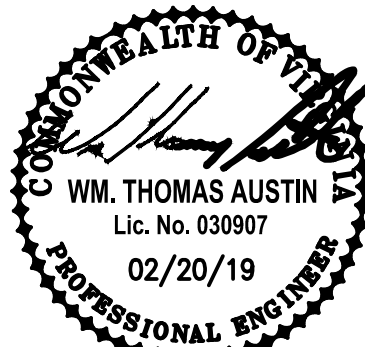


TYPICAL GROUND COVER & SHRUB BED DETAIL

CITY PLAN NO.: CP19-0003



GENERAL NOTES



**ROANOKE FIRE-EMS
STATION #7**

BID SET

SFCS
Architecture
Engineering
Planning
Interiors
SFCS Inc. • 305 South Jefferson Street
Roanoke, Virginia 24011.2003
540.344.6664 • Fax 540.343.6925
www.sfcs.com

PROJECT DESIGNER	:	
PROJECT ARCHITECT	:	
PROJECT ENGINEER	:	WTA
DRAWN BY	:	ARB
CHECKED BY	:	WTA
APPROVED BY	:	WTA
NO.	REVISION DESCRIPTION	DATE
1	Addendum No. 4	3/22/19
2	Addendum No. 5	7/11/19

DRAWING TITLE
**LANDSCAPE
PLAN**

COMM. NO. 17503.00	DATE FEBRUARY 20, 2019
DRAWING	SHEET

C8.1