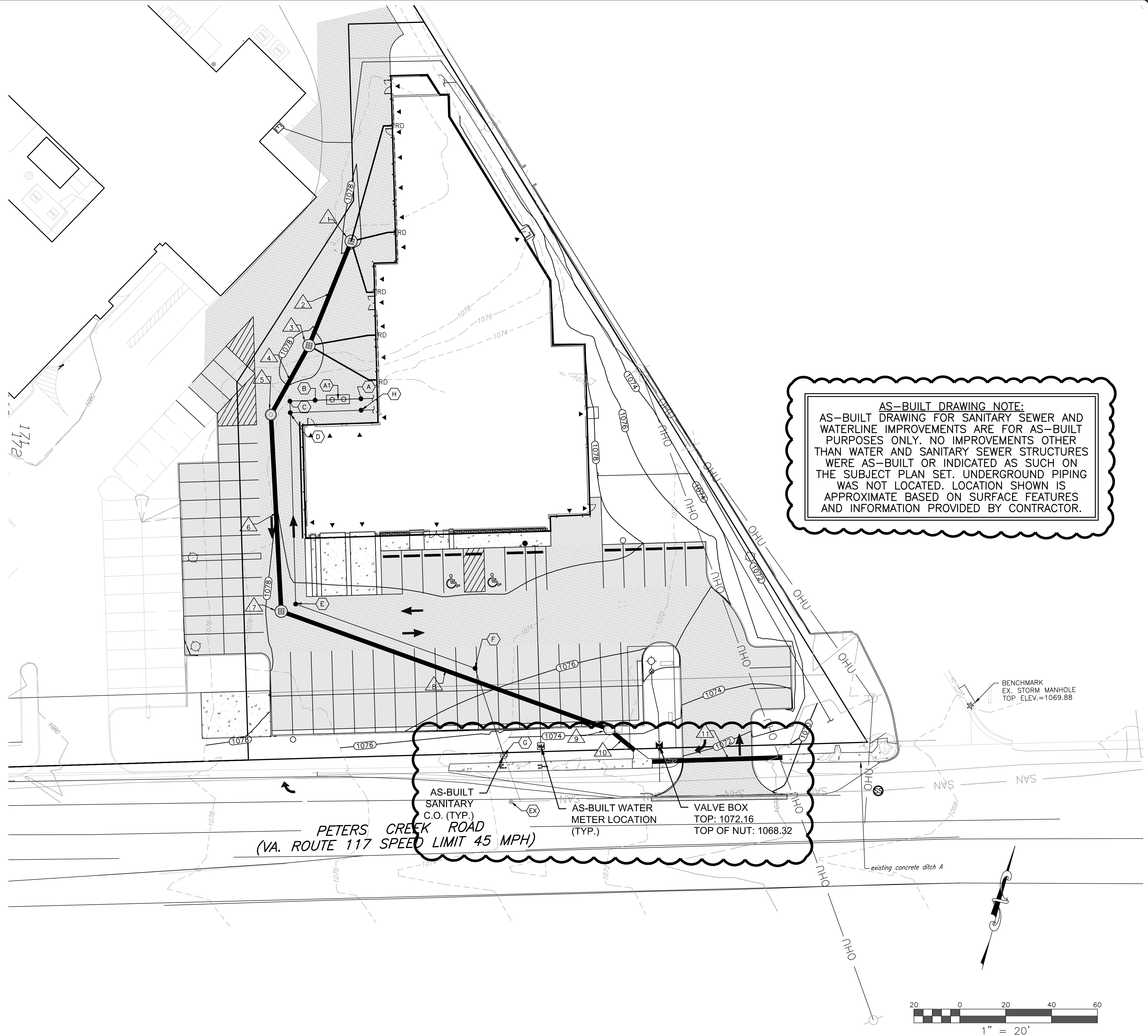


SANITARY SEWER SCHEDULE:

- A 6" S.S. CLEANOUT - PRIVATE W/ TRAFFIC BEARING LID
TOP=1078.37
INV.=1074.2
- A A1 5' OF 6" SDR-35 @ 1.50%
- A1 OIL/WATER SEPARATOR W/ WATER LOADING TOPS
TOP=1078.32
INV.=1074.15
- A1 B 5' OF 6" SDR-35 @ 4.6%
- B 6" S.S. CLEANOUT - PRIVATE W/ TRAFFIC BEARING LID
TOP=1078.26
INV.=1073.90
- B C 11' OF 6" SDR-35 @ 1.50%
- C 6" S.S. CLEANOUT - PRIVATE W/ TRAFFIC BEARING LID
TOP=1078.19
INV.=1073.74
- C D 5' OF 6" SDR-35 @ 1.04%
- D 6" S.S. CLEANOUT - PRIVATE W/ TRAFFIC BEARING LID
TOP=1078.33
INV.=1073.69
- D E 84' OF 6" SDR-35 @ 1.04%
- E 6" S.S. CLEANOUT - PRIVATE W/ TRAFFIC BEARING LID
TOP=1077.83
INV.=1072.81
- E F 83' OF 6" SDR-35 @ 1.67%
- F 6" S.S. CLEANOUT - PRIVATE W/ TRAFFIC BEARING LID
TOP=1076.63
INV.=1071.42
- F G 39' OF 6" SDR-35 @ 3.26%
- G 6" S.S. CLEANOUT - PUBLIC
TOP=1073.83
INV.=1070.15
- G EX 22' OF 6" SDR-35 @ 2.19%
- EX 6" S.S. CLEANOUT - PUBLIC
TOP=1073.66
INV.=1069.66
- H 6" S.S. CLEANOUT - PRIVATE
TOP=1078.41
INV.=1074.15
- H D 36' OF 6" SDR-35 @ 1.27%

(G.C. TO CONFIRM & COORDINATE ALL TIE IN LOCATIONS W/M.E.P. & ARCH. DRAWINGS PRIOR TO ANY INTERIOR OR EXTERIOR S.S. PIPE BEING INSTALLED. NOTIFY ENGINEER IMMEDIATELY IF DISCREPANCIES ARE DISCOVERED PRIOR TO ANY CONSTRUCTION)



AS-BUILT DRAWING NOTE:
AS-BUILT DRAWING FOR SANITARY SEWER AND WATERLINE IMPROVEMENTS ARE FOR AS-BUILT PURPOSES ONLY. NO IMPROVEMENTS OTHER THAN WATER AND SANITARY SEWER STRUCTURES WERE AS-BUILT OR INDICATED AS SUCH ON THE SUBJECT PLAN SET. UNDERGROUND PIPING WAS NOT LOCATED. LOCATION SHOWN IS APPROXIMATE BASED ON SURFACE FEATURES AND INFORMATION PROVIDED BY CONTRACTOR.



BALZER & ASSOCIATES
PLANNERS / ARCHITECTS
ENGINEERS / SURVEYORS

Roanoke / Richmond
New River Valley / Staunton
Harrisonburg / Lynchburg
www.balzer.cc

1208 Corporate Circle
Roanoke, VA 24018
540.772.9580



FIRST TEAM VOLKSWAGEN

WATER & SEWER AS-BUILT PLAN
6614 PETERS CREEK ROAD

HOLINS DISTRICT
ROANOKE COUNTY, VIRGINIA

DRAWN BY EJP
DESIGNED BY CPB
CHECKED BY CPB
DATE 10/12/2020
SCALE 1" = 20'
REVISIONS

AS-BUILT
PROJECT NO. 03190030.00