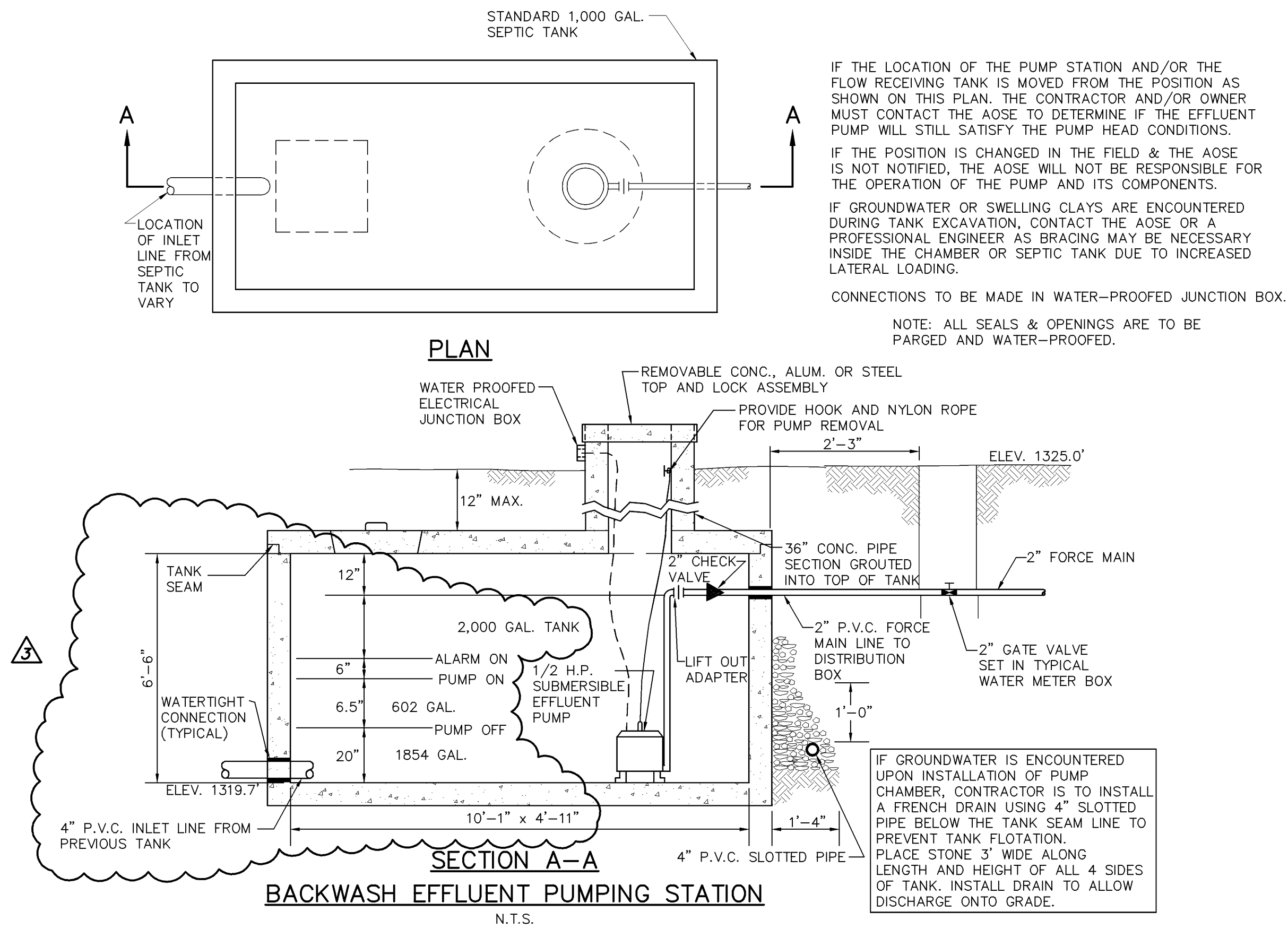


TANKS MUST BE CONSTRUCTED USING A CONCRETE MIXTURE THAT ACHIEVES A FINAL COMPRESSIVE STRENGTH OF NO LESS THAN 3,000 PSI IN A 28 DAY CURING PERIOD.



EFFLUENT SPECIFICATIONS

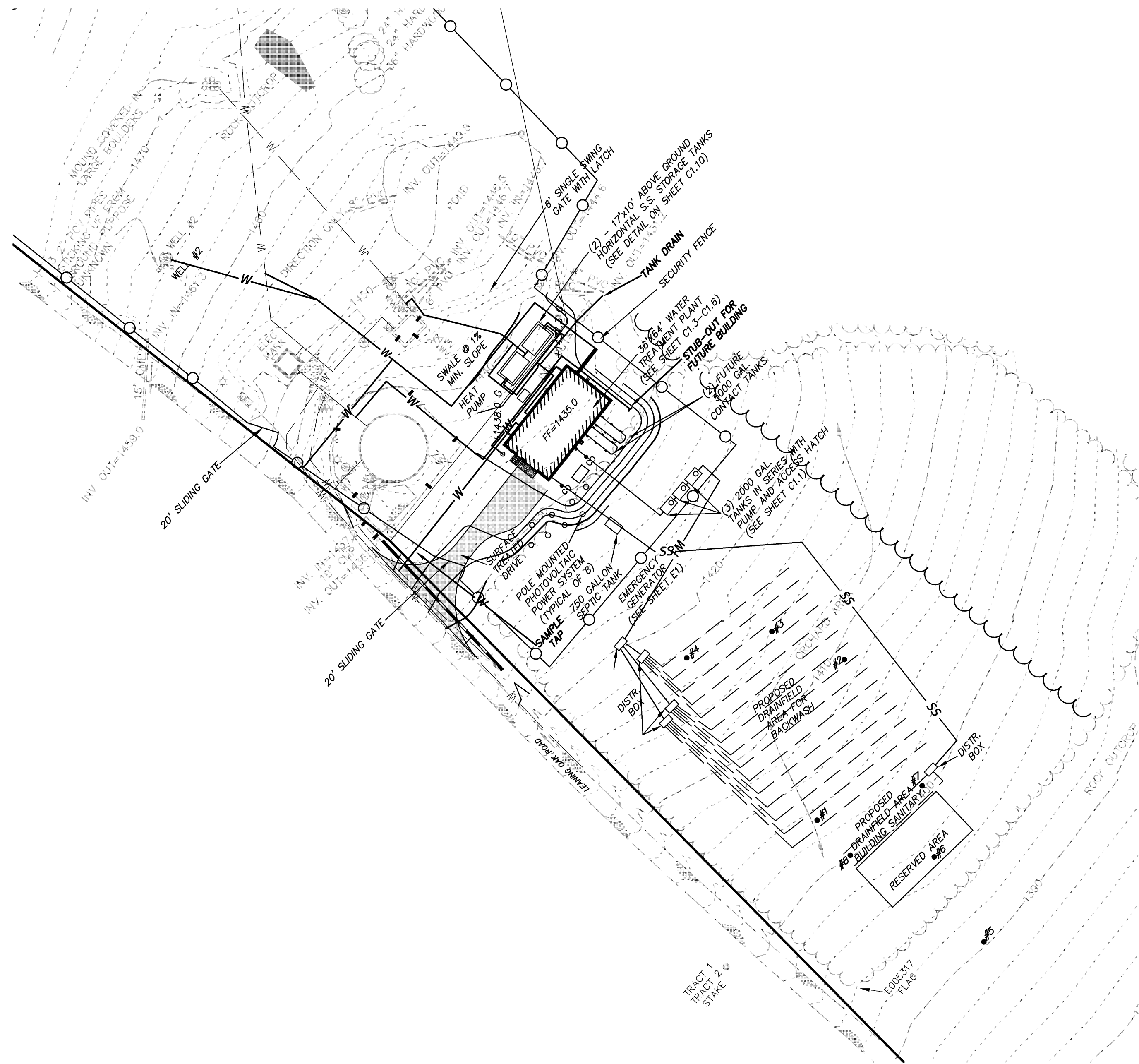
EFFLUENT PUMP: THE EFFLUENT PUMP SHALL BE EQUAL TO GOULDS SUBMERSIBLE EFFLUENT PUMP MODEL 3885 - WE0511H CAPABLE OF DELIVERING 45 GALLONS PER MINUTE AGAINST A TOTAL DYNAMIC HEAD OF 20 FEET. THE MOTOR SHALL BE SINGLE PHASE, 115 VOLTS, 3,450 R.P.M., 1/2 H.P.

CONTROL PANEL: THE CONTROL PANEL SHALL BE AN ORENCO MVP-S2 SERIES OR AQUAWORX BY INFILTRATOR OR EQUIVALENT. THE TIMER SHALL BE SET TO OPERATE THE PUMP FOR APPROX. 13.5 MINUTES (PUMPING 602 GAL. PER CYCLE @ 45 GPM) THE PUMP SHALL OPERATE 2 TIMES PER DAY (TOTAL RUN TIME OF 27 MIN. PER DAY), TOTAL PUMPED PER DAY IS 1204 GALLONS. A FLOAT SHALL BE SET 1" BELOW THE 'PUMP OFF' POSITION TO DEACTIVATE THE PUMP, SHOULD THE TIMER MALFUNCTION OR THE EFFLUENT LEVEL DROP TOO LOW. A SINGLE FLOAT SET AT THE 'ALARM ON' POSITION SHALL ACTIVATE THE ALARM. THE TIMER SHALL AUTOMATICALLY RESET TO NORMAL OPERATION WHEN LIQUID LEVELS RETURN TO NORMAL LEVELS.

PIPING & VALVE: ALL PIPING WITHIN THE PUMP STATION SHALL BE SCHEDULE 40 P.V.C. WITH FITTINGS. THE FORCE MAIN SHALL HAVE A LIFT-OUT ADAPTER PLACED JUST BEYOND THE 90° ELBOW ON THE RISER PIPE. ON THE OUTLET SIDE OF THE ADAPTER SHALL BE A 2" CHECK VALVE. THE CHECK VALVE SHALL BE GOULDS MODEL A9-2L. THE P.V.C. FORCE MAIN SHALL BE SCHEDULE 40 WITH PRESSURE RATED JOINTS. ALL FORCE MAIN PIPING SHALL BE 2" DIAMETER. THE LIFT-OUT ADAPTER SHALL BE GOULDS MODEL AF-20. THE CONTRACTOR SHALL PROVIDE CONCRETE ANCHOR BLOCKS AT ALL BENDS IN FORCE MAIN.

PUMP STATION CHAMBER & FLOW RECEIVING TANK: THE PUMP STATION CHAMBER SHALL BE A 2,000 GALLON SEPTIC TANK WITH A 36" DIAMETER CONCRETE PIPE SET OVER ONE ACCESS HOLE. THE 36" DIAMETER ACCESS SHALL HAVE A FITTED ALUM. TOP SET ON THE PIPE. THE FLOW RECEIVING TANK SHALL BE A STANDARD DISTRIBUTION BOX WITH ONLY AN INLET AND OUTLET PORT OPENED. ALL ELECTRICAL CONNECTIONS SHALL BE MADE IN A GOULDS JUNCTION BOX, MODEL 8J-1J. ALL ELECTRICAL CONNECTIONS SHALL BE IN ACCORDANCE WITH ALL APPLICABLE LOCAL CODES. THE CONTRACTOR SHALL BE RESPONSIBLE FOR OBTAINING ANY BUILDING PERMITS THAT ARE APPLICABLE. THE ALUM. OR CONC. TOP SHALL HAVE A FITTED RING ANCHORED TO THE END OF THE CONC. ENTRY TUBE. THE TOP SHALL BE REMOVABLE WITH A LOCK ASSEMBLY PROVIDED.

*THIS IS NOT A PERMIT.
REFER TO PERMIT DRAWING (BY OTHERS) FOR COMPLETE DRAINFIELD LOCATIONS DIMMENSIONS AND SPECIFICATIONS.



EFFLUENT PUMP PLAN DETAILS-ASBUILT
FOR
TOWN OF BOONES MILL WATER SYSTEM REPLACEMENT, VOLUME 2
TOWN OF BOONES MILL, BOONE DISTRICT, FRANKLIN COUNTY, VA

PROJECT NO. 20080815
G.L. NO. 297-03-A3.9
FILE NO. G-12675
DATE: 7/31/09
DRAWN BY: ASK
CHECKED BY: BLC