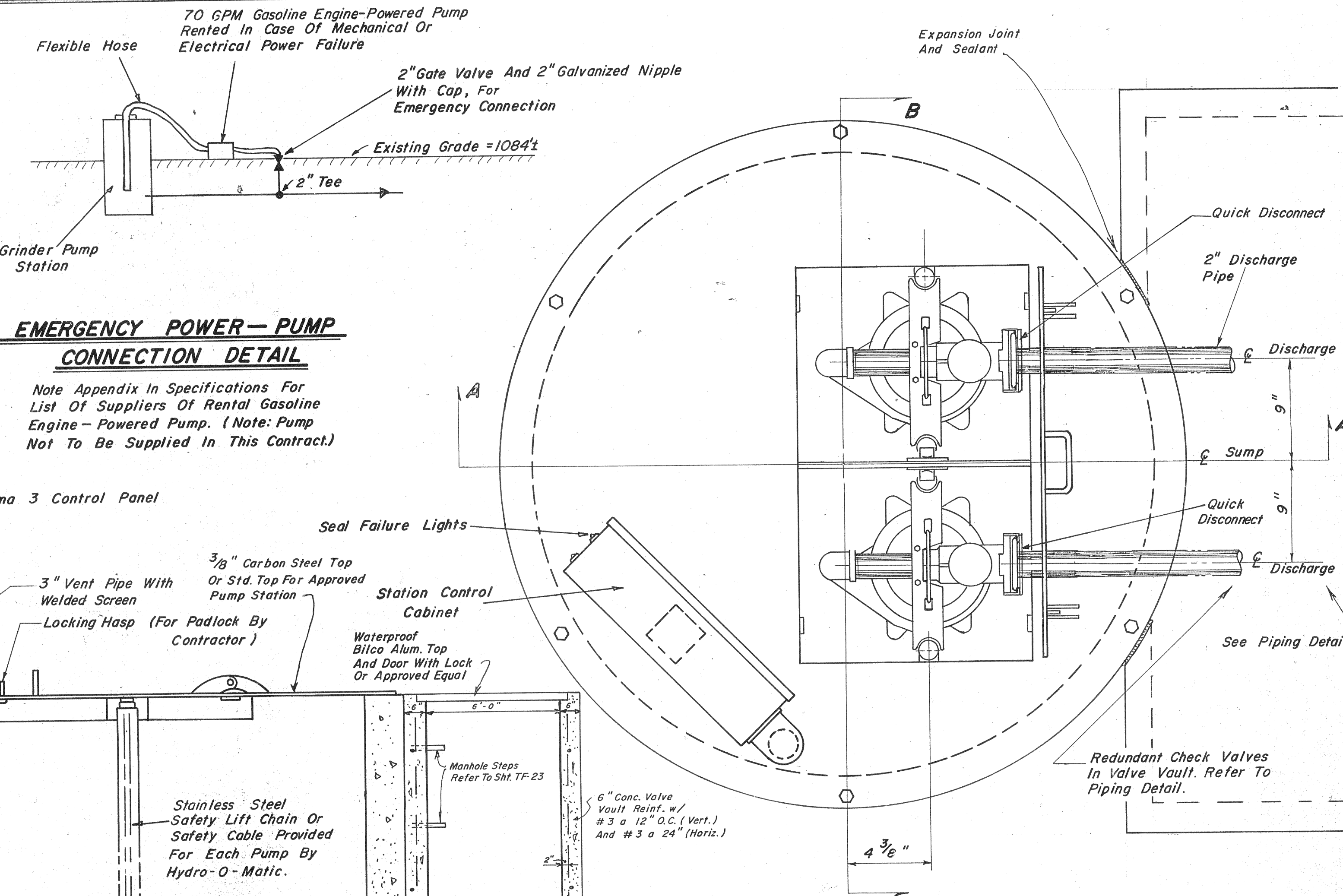
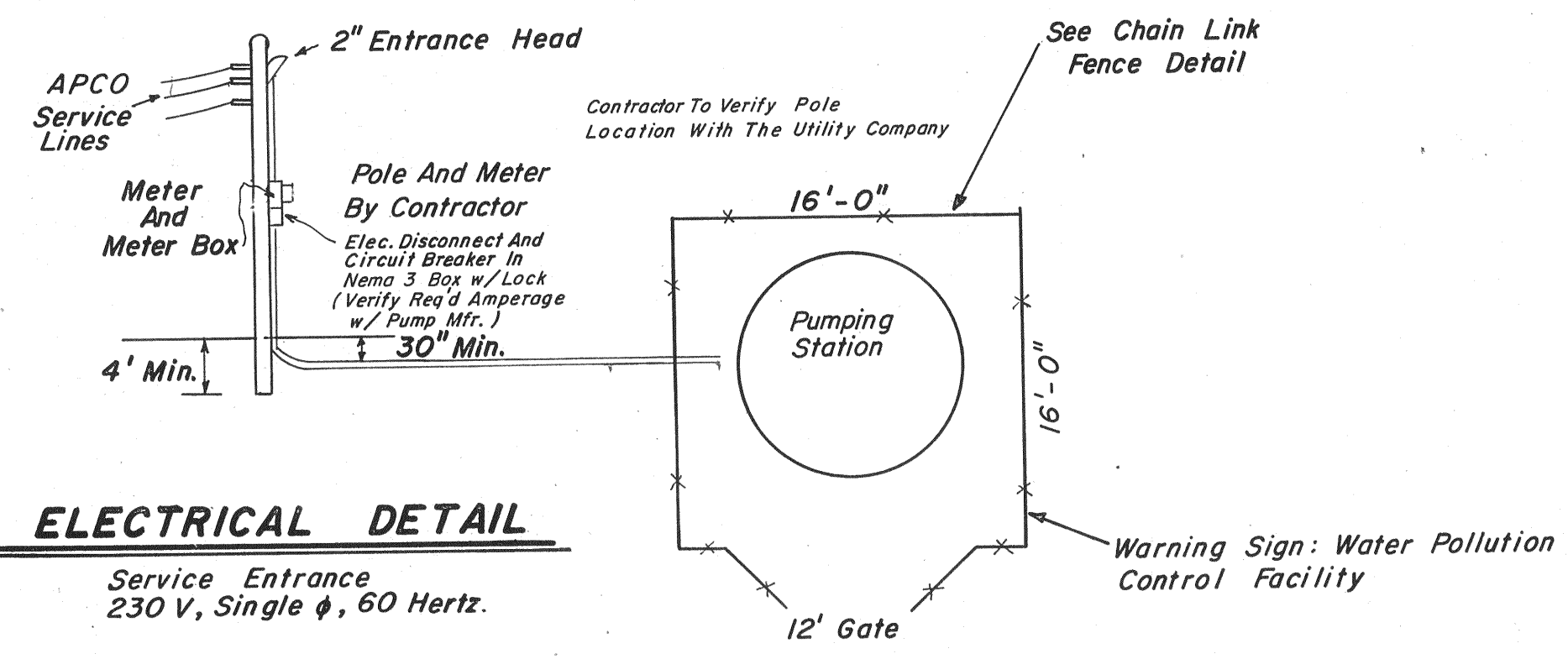
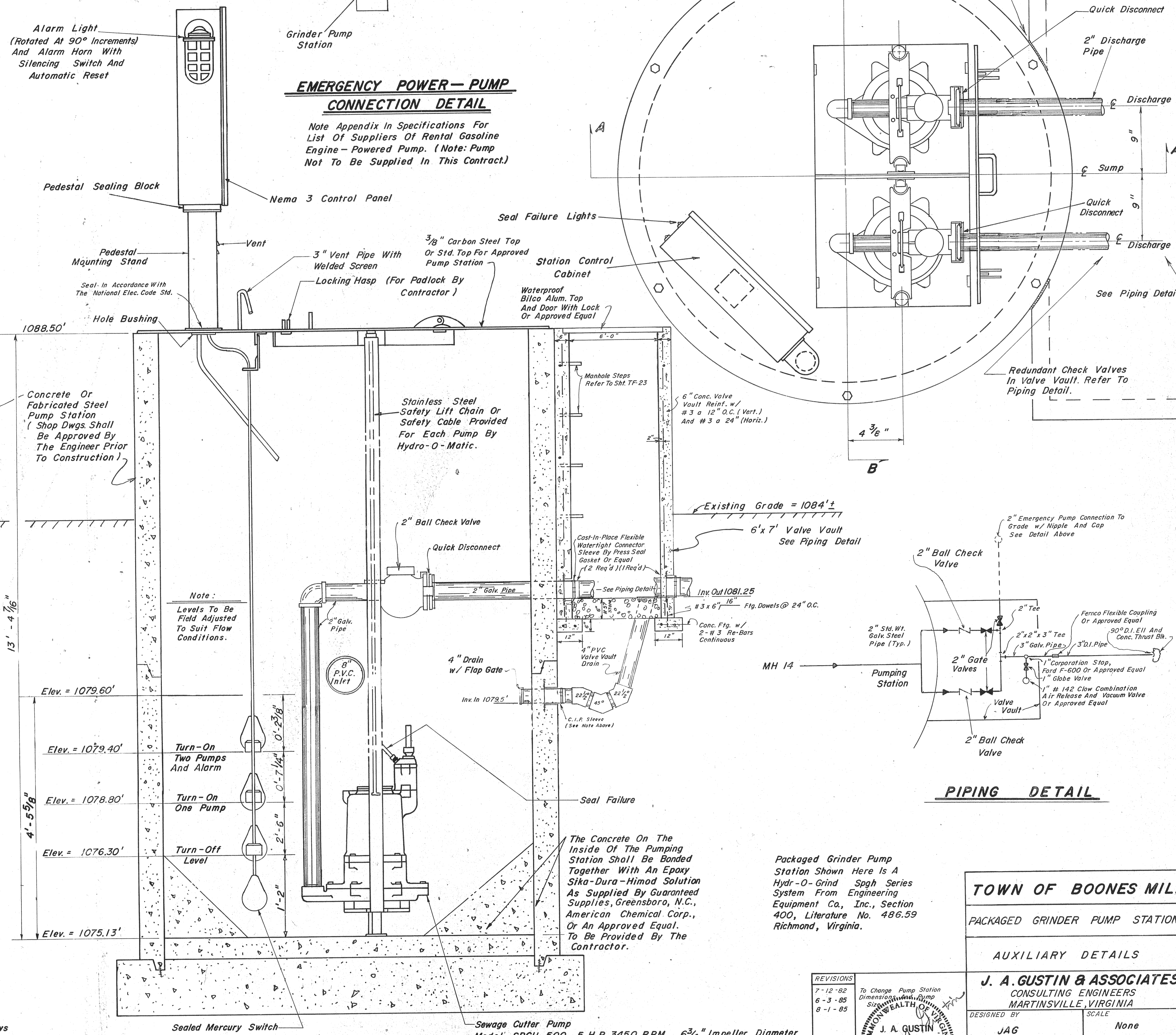
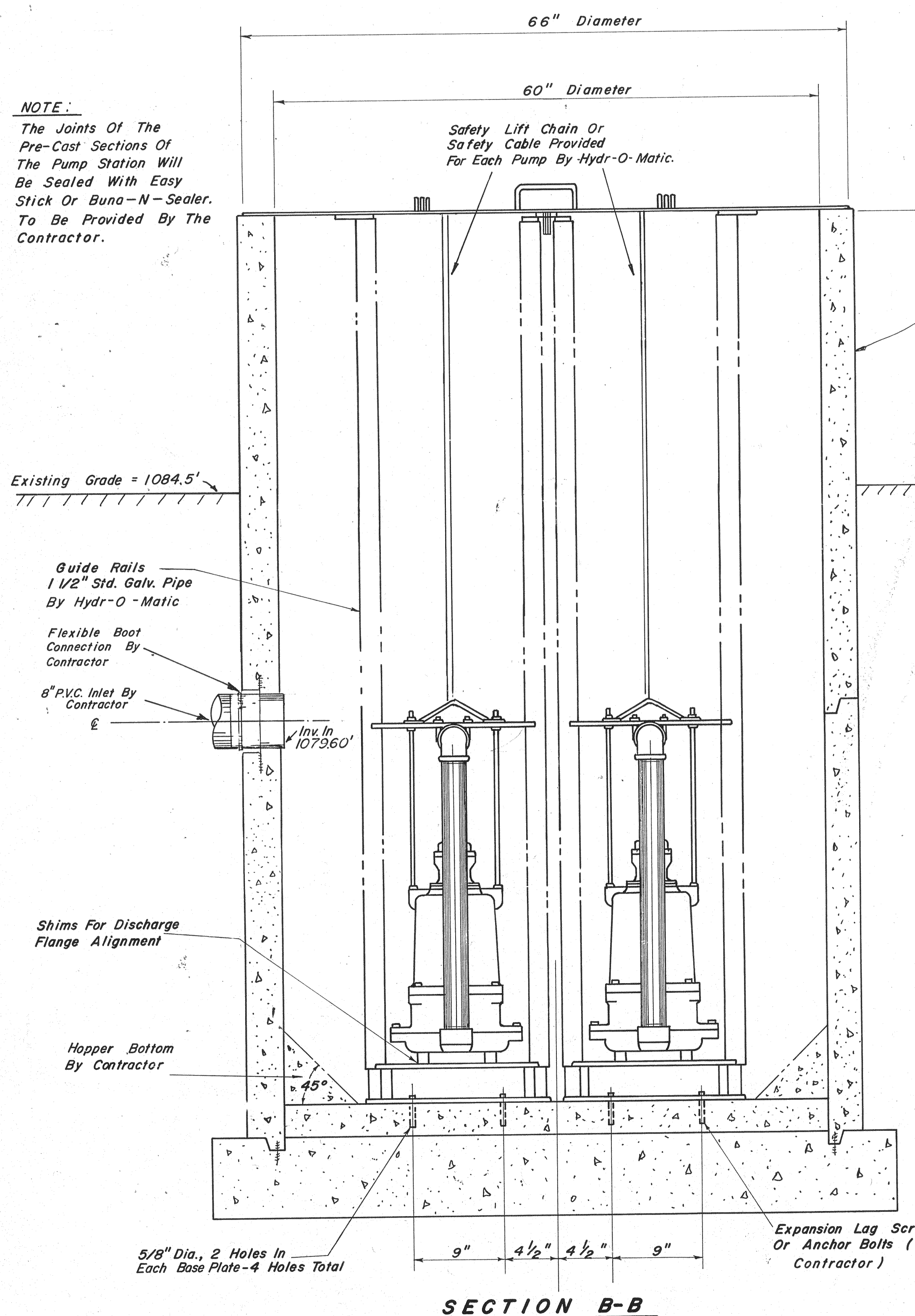


100-YEAR FLOOD ELEVATION AT PUMPING STATION = 1087.50'



NOTE:
The Joints Of The Pre-Cast Sections Of The Pump Station Will Be Sealed With Easy Stick Or Buna-N-Sealer. To Be Provided By The Contractor.



PIPING DETAIL

Packaged Grinder Pump Station Shown Here Is A Hydr-O-Grind Sgph Series System From Engineering Equipment Co., Inc., Section 400, Literature No. 486.59 Richmond, Virginia.

TOWN OF BOONES MILL	
PACKAGED GRINDER PUMP STATION	
AUXILIARY DETAILS	
J. A. GUSTIN & ASSOCIATES CONSULTING ENGINEERS MARTINSVILLE, VIRGINIA	
DESIGNED BY	SCALE
JAG	None
DRAWN BY	DATE
TAW	11-23-81
CHECKED BY	SHEET NO.
JAG	TF-19

REVISIONS

7-12-82	To Change Pump Station Dimension
6-3-85	Dimension
8-1-85	Dimension

J. A. GUSTIN
CIVIL ENGINEER
CERTIFICATE NO. 2052

SECTION A-A

"AS BUILT PLANS"