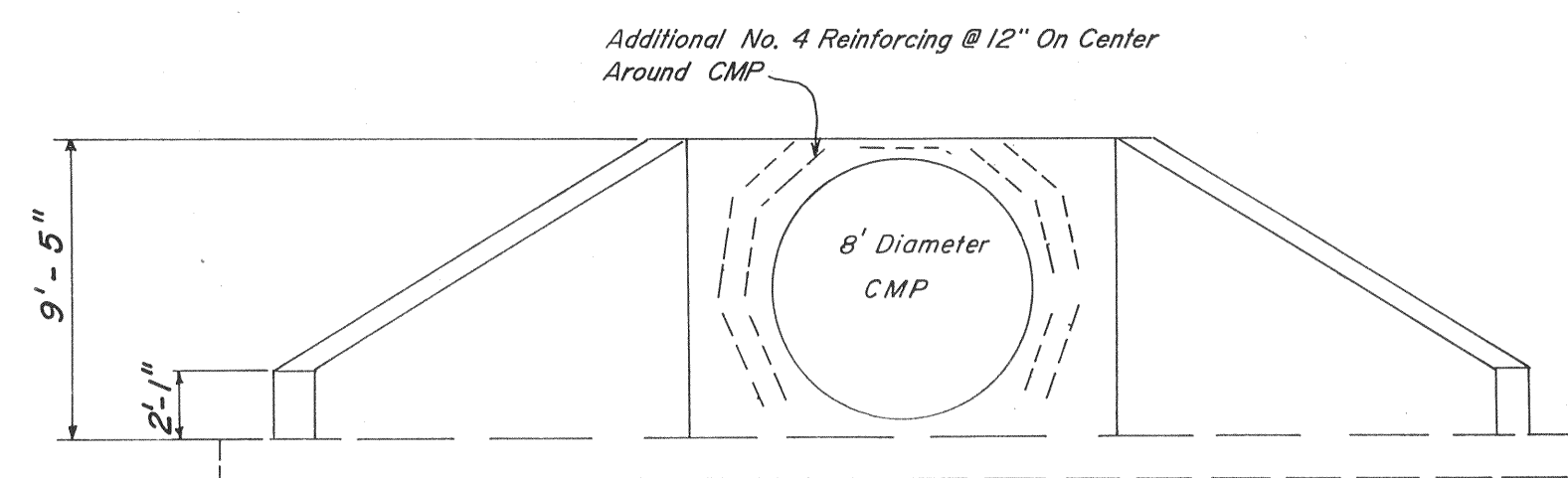
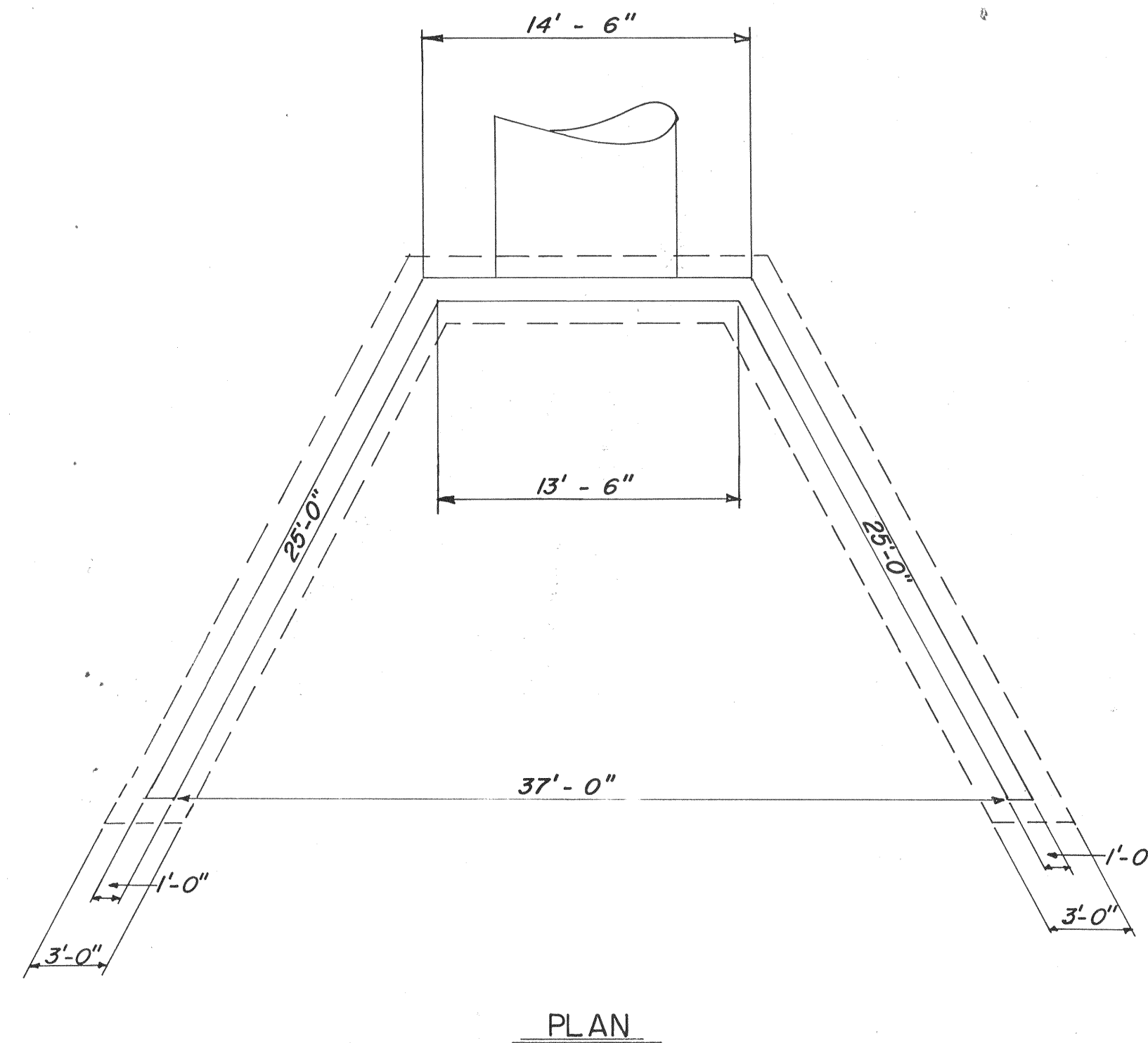
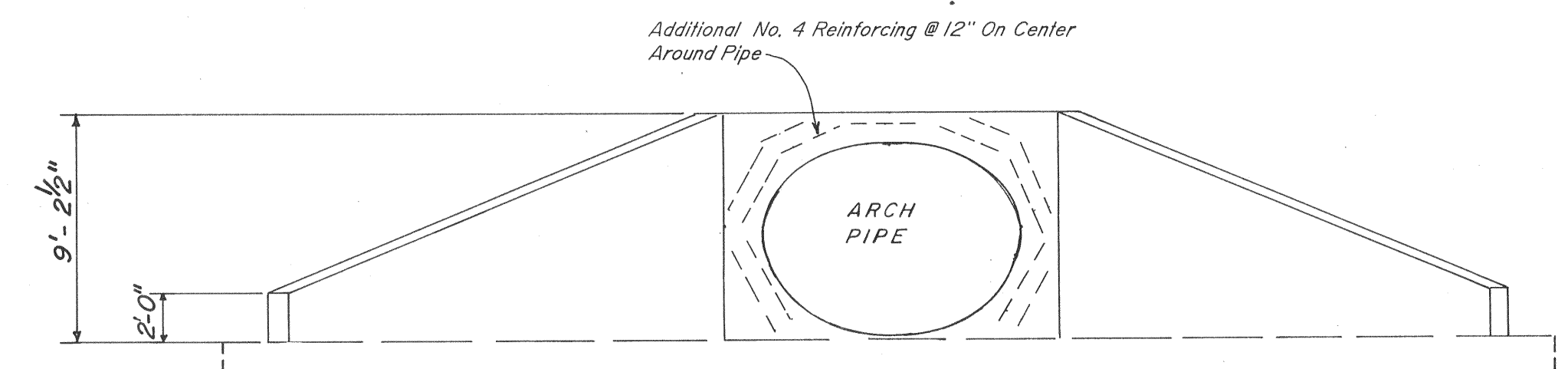
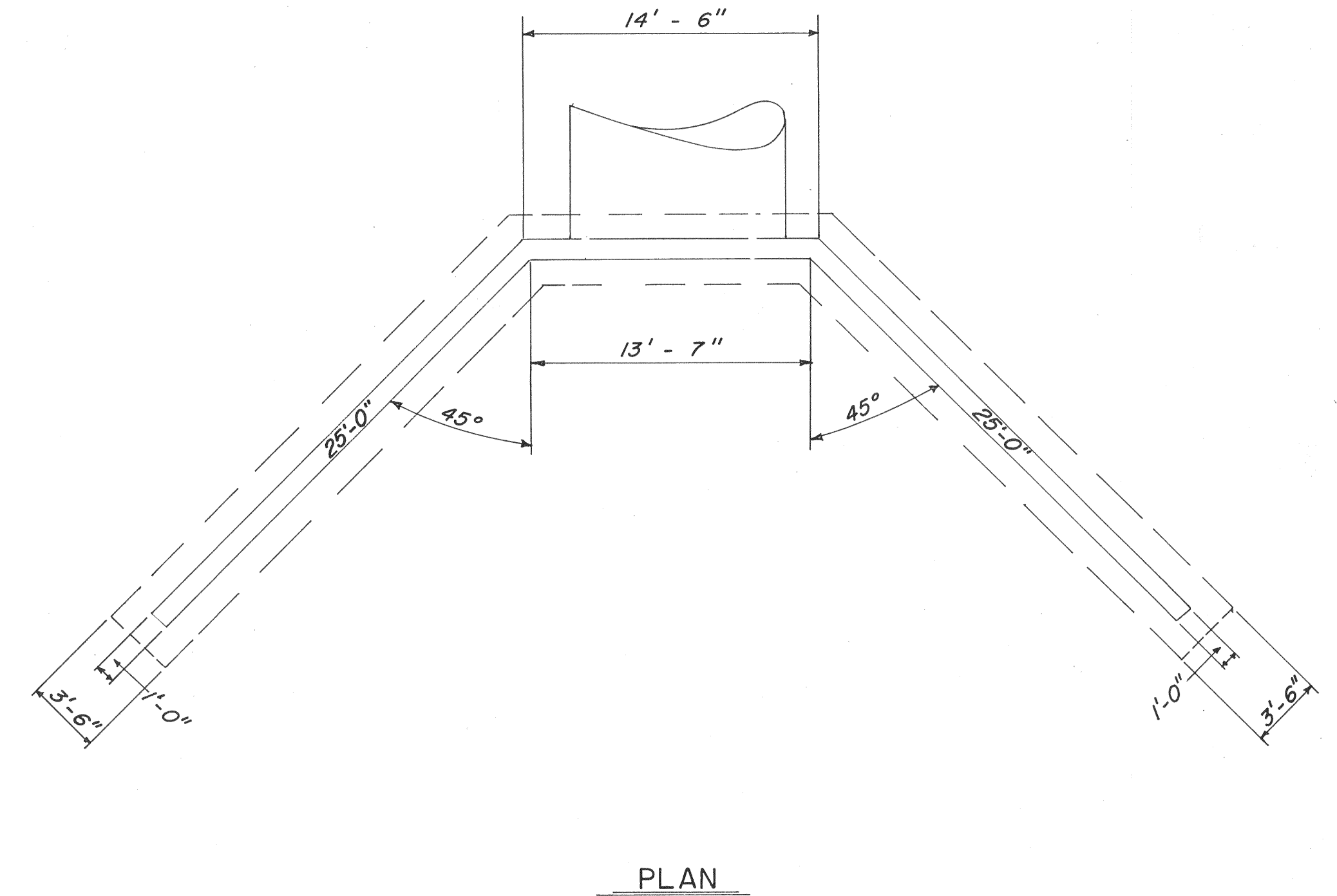


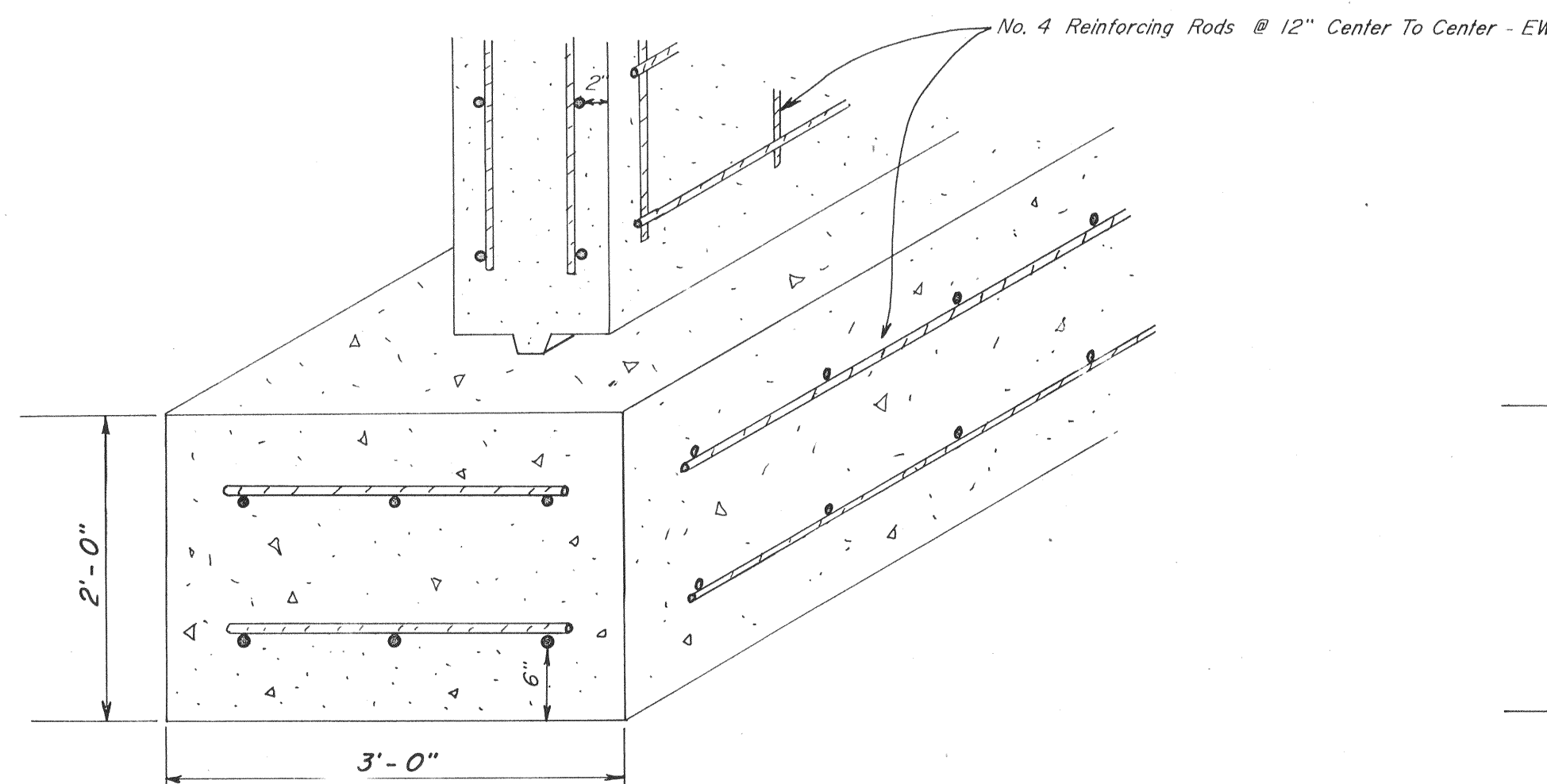
**CONCRETE ENDWALL No. 3**  
Scale: 1" = 6'  
REFER TO SHEET TF-17C



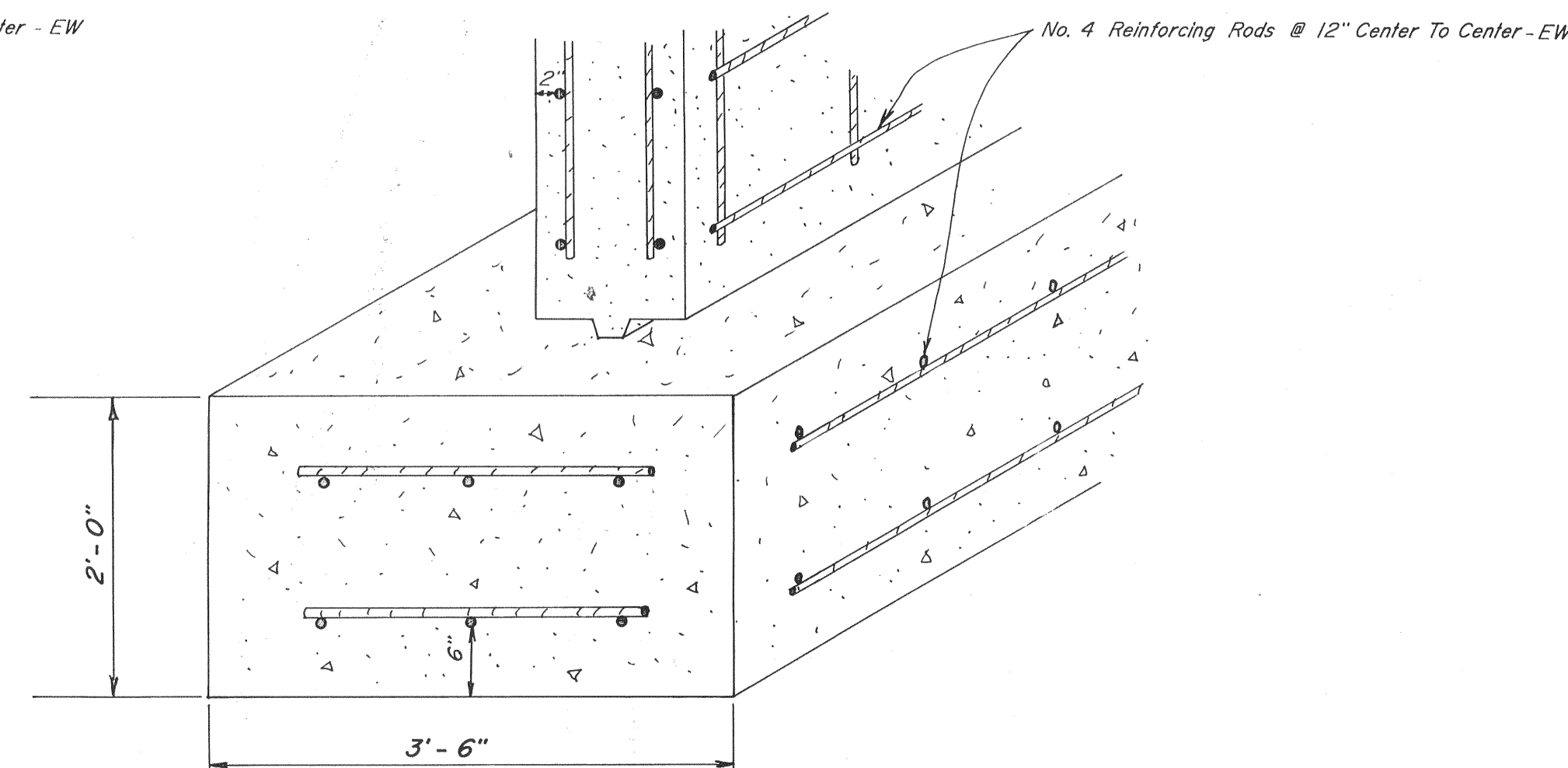
**CONCRETE ENDWALL No. 2**  
Scale: 1" = 6'  
REFER TO SHEETS TF-17B AND TF-17C  
OUTLET END



**CONCRETE ENDWALL No. 1**  
Scale: 1" = 6'  
REFER TO SHEETS TF-17B AND TF-17C  
INLET END



**TYPICAL FOOTING - DISCHARGE END**  
Scale: 1" = 1'-0"



**TYPICAL FOOTING - INLET END**  
Scale: 1" = 1'-0"

**"AS BUILT PLANS"**

**NOTE:**

Refer To Article 24, "Concrete", Of The Specifications  
And Contract Documents For A Sanitary Sewerage System  
To Serve The Town Of Boones Mill, Franklin County, Virginia,  
For The Concrete Specifications.

**TOWN OF BOONES MILL**

STABILIZATION POND

AUXILARY DETAILS

**J. A. GUSTIN & ASSOCIATES**  
CONSULTING ENGINEERS  
MARTINSVILLE, VIRGINIA

DESIGNED BY JAG SCALE As Shown

DRAWN BY KPJ DATE

CHECKED BY NRC & JAG SHEET NO. TF-22R

