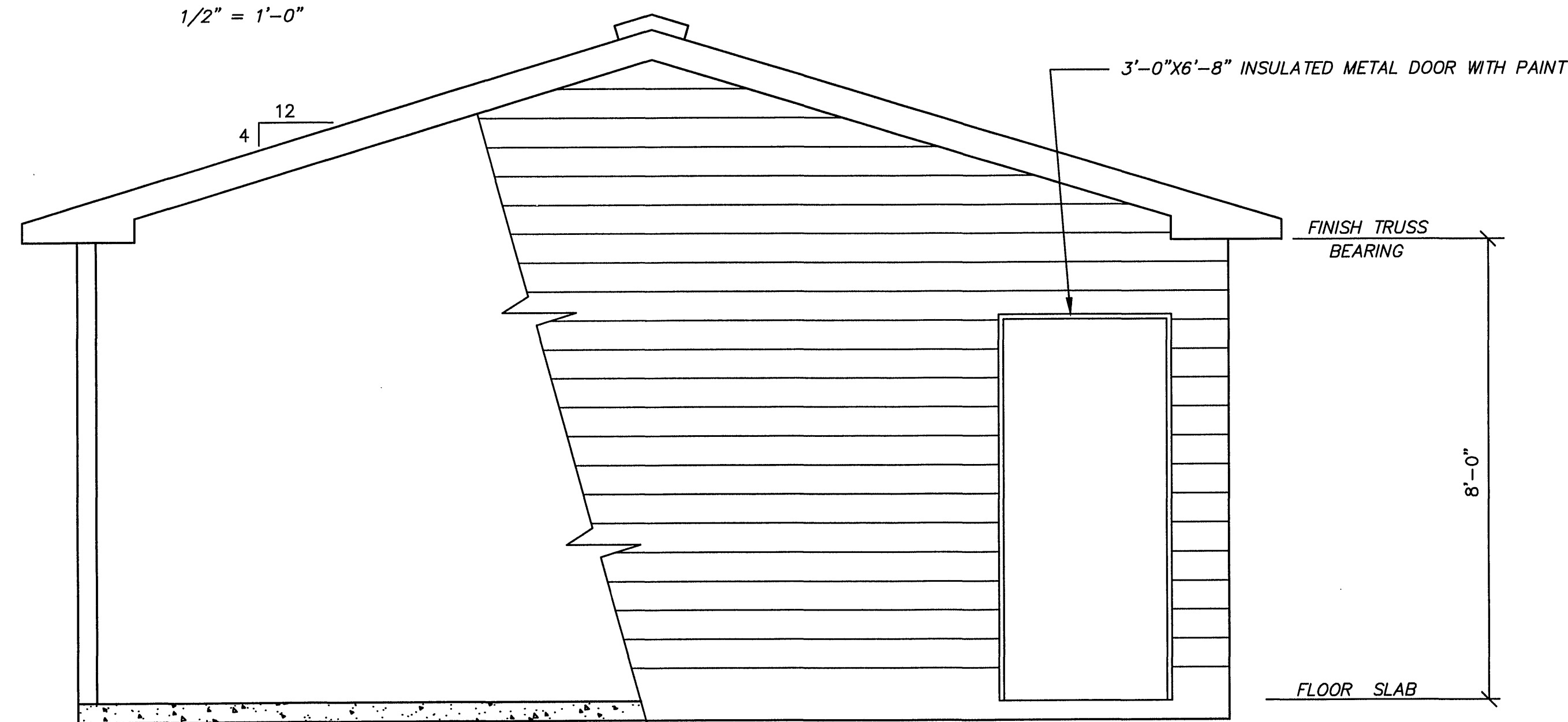
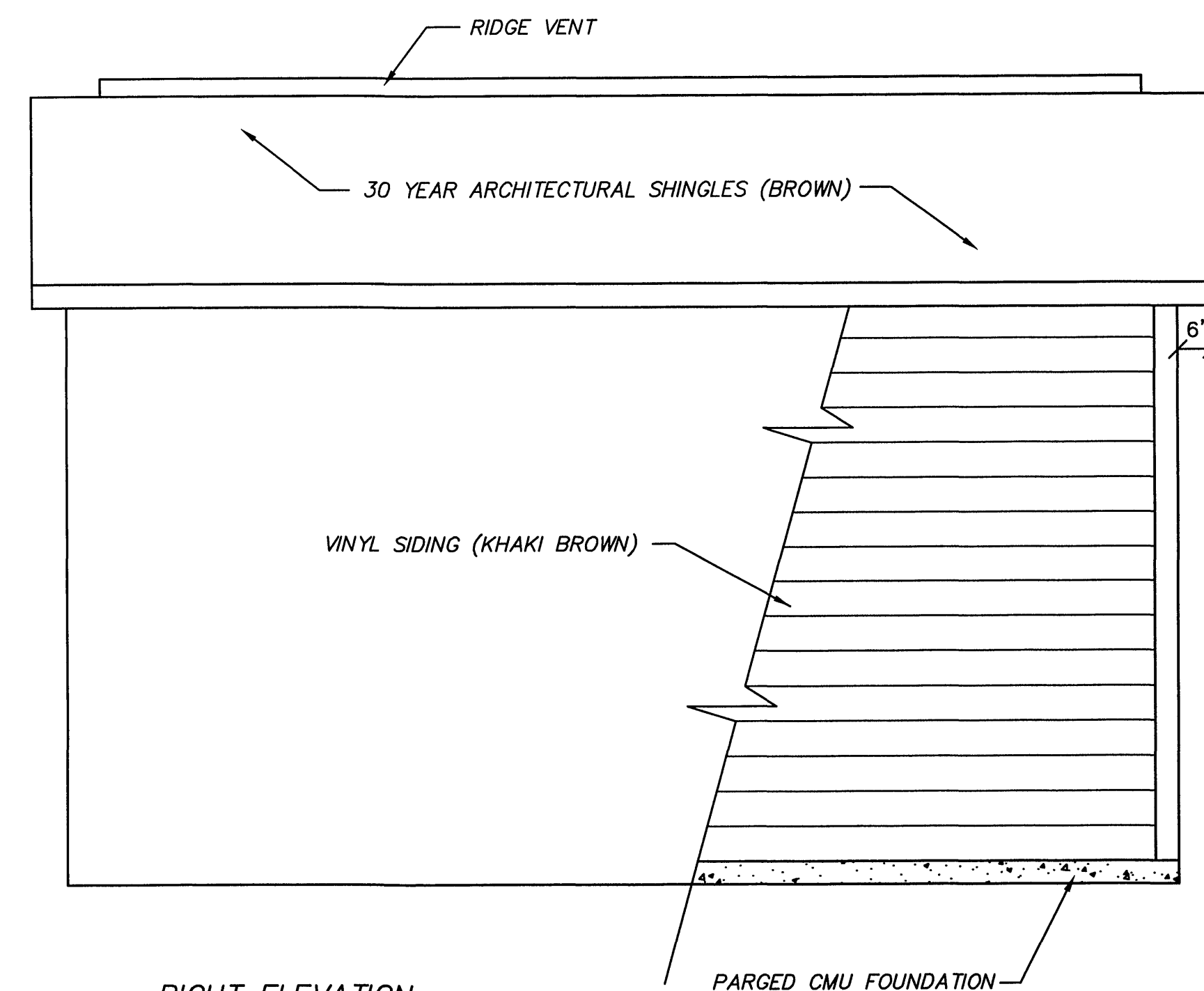


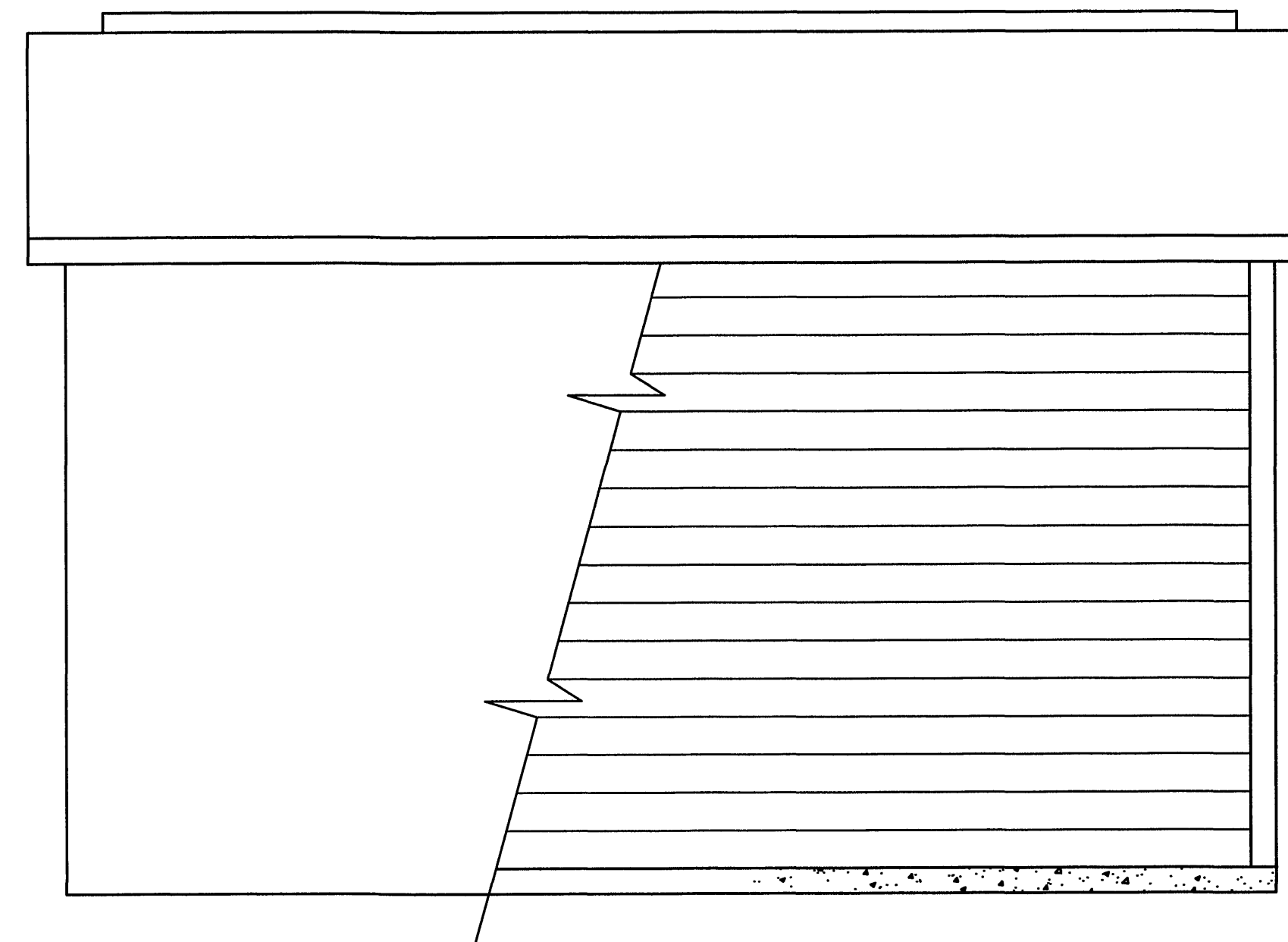
REAR ELEVATION  
1/2" = 1'-0"



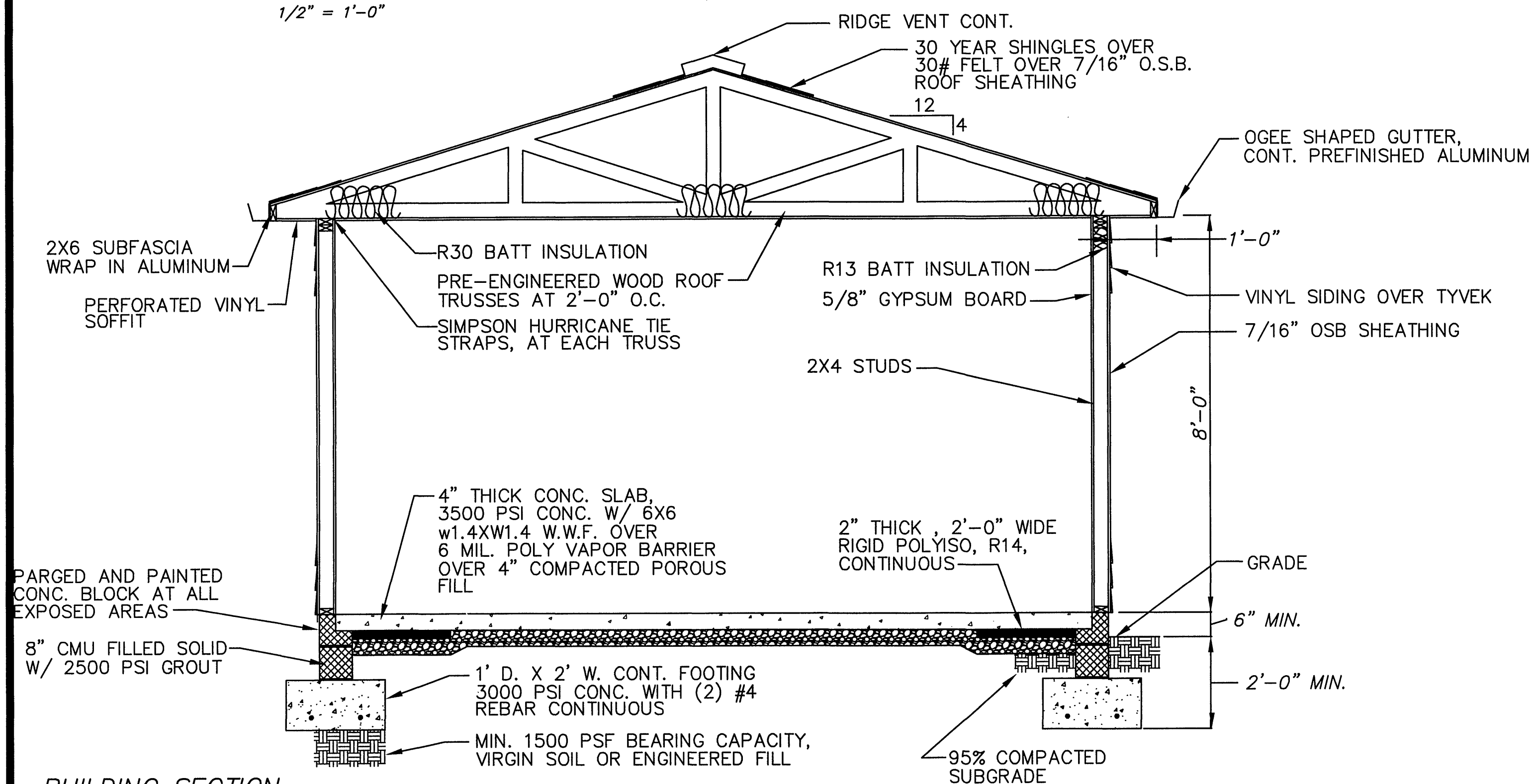
FRONT ELEVATION  
1/2" = 1'-0"



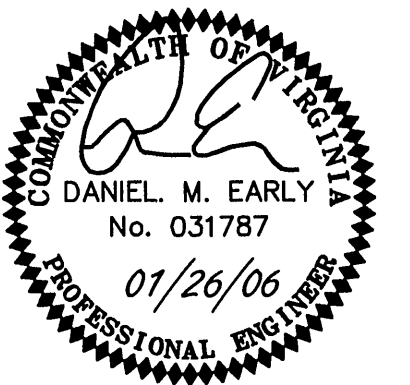
RIGHT ELEVATION  
1/2" = 1'-0"



LEFT ELEVATION  
1/2" = 1'-0"



BUILDING SECTION  
1/2" = 1'-0"



**ACS  
DESIGN**

Engineering-Planning-Surveying  
Construction Management

2203 Peters Creek Road, NW  
Roanoke, Virginia 24017  
Phone: 540 562 2345  
Fax: 540 562 2344  
Email: info@acsdesignllc.com  
www.acsdesignllc.com

**LAKEWATCH PLANTATION  
COMMUNITY SEWER SYSTEM  
PHASE 1  
FRANKLIN COUNTY, VIRGINIA**

DRAWN BY: C.E.K.

DESIGNED BY: C.E.K.

CHECKED BY:

DATE: JAN. 26, 2006

SCALE: AS SHOWN

REVISIONS

| DATE | REVISION | COMMENT |
|------|----------|---------|
|      |          |         |
|      |          |         |
|      |          |         |
|      |          |         |
|      |          |         |
|      |          |         |
|      |          |         |
|      |          |         |
|      |          |         |

SHEET No.

**C1.20**

EFFLUENT METER  
BUILDING ELEVATIONS AND  
TYPICAL CROSS-SECTION  
JOB No. 05076