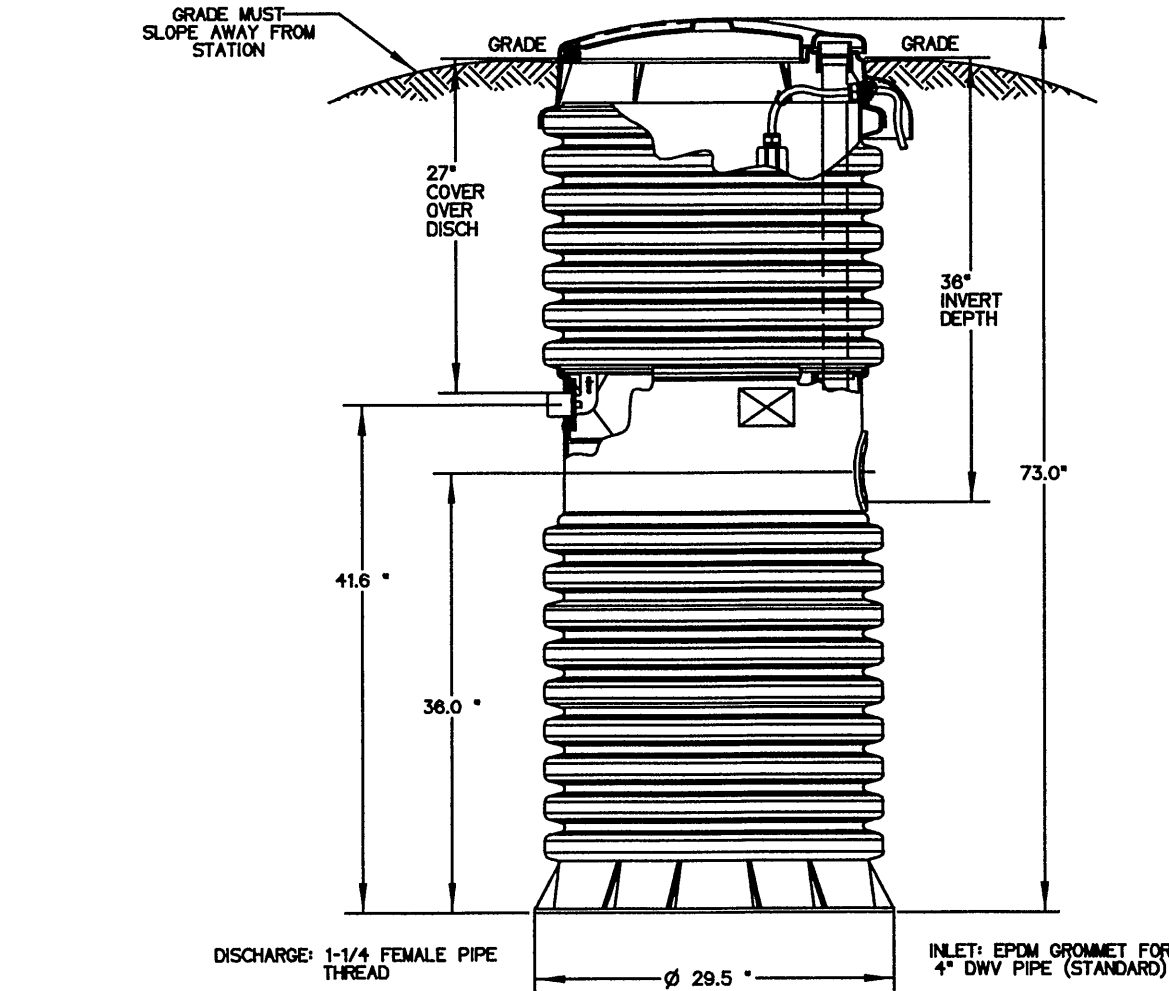


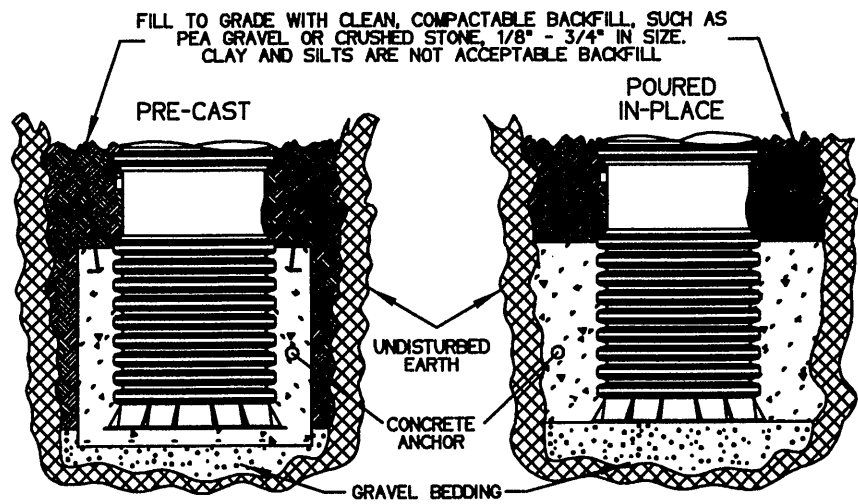
PUMP STATION GENERAL CONFIGURATION



\*\*SEE INSTALLATION INSTRUCTIONS FOR FURTHER DETAILS

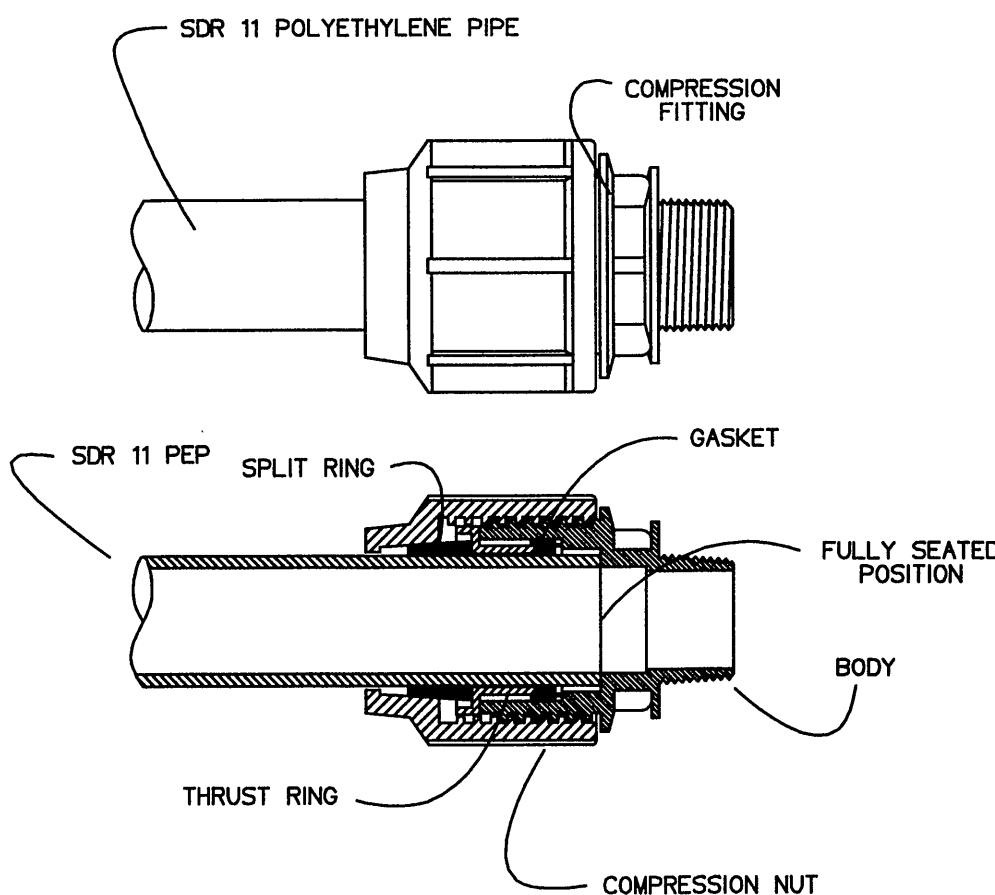
MODEL 2010-74

NOTE: A CONCRETE ANCHOR OF 2000 lbs (13.2 cu ft) IS REQUIRED ON ALL MODEL 2010 74" STATIONS.



E-ONE MODEL  
2010-74

COMPRESSION FITTING DETAIL

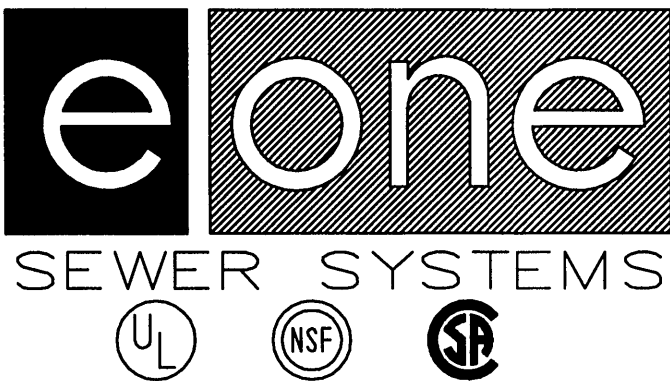
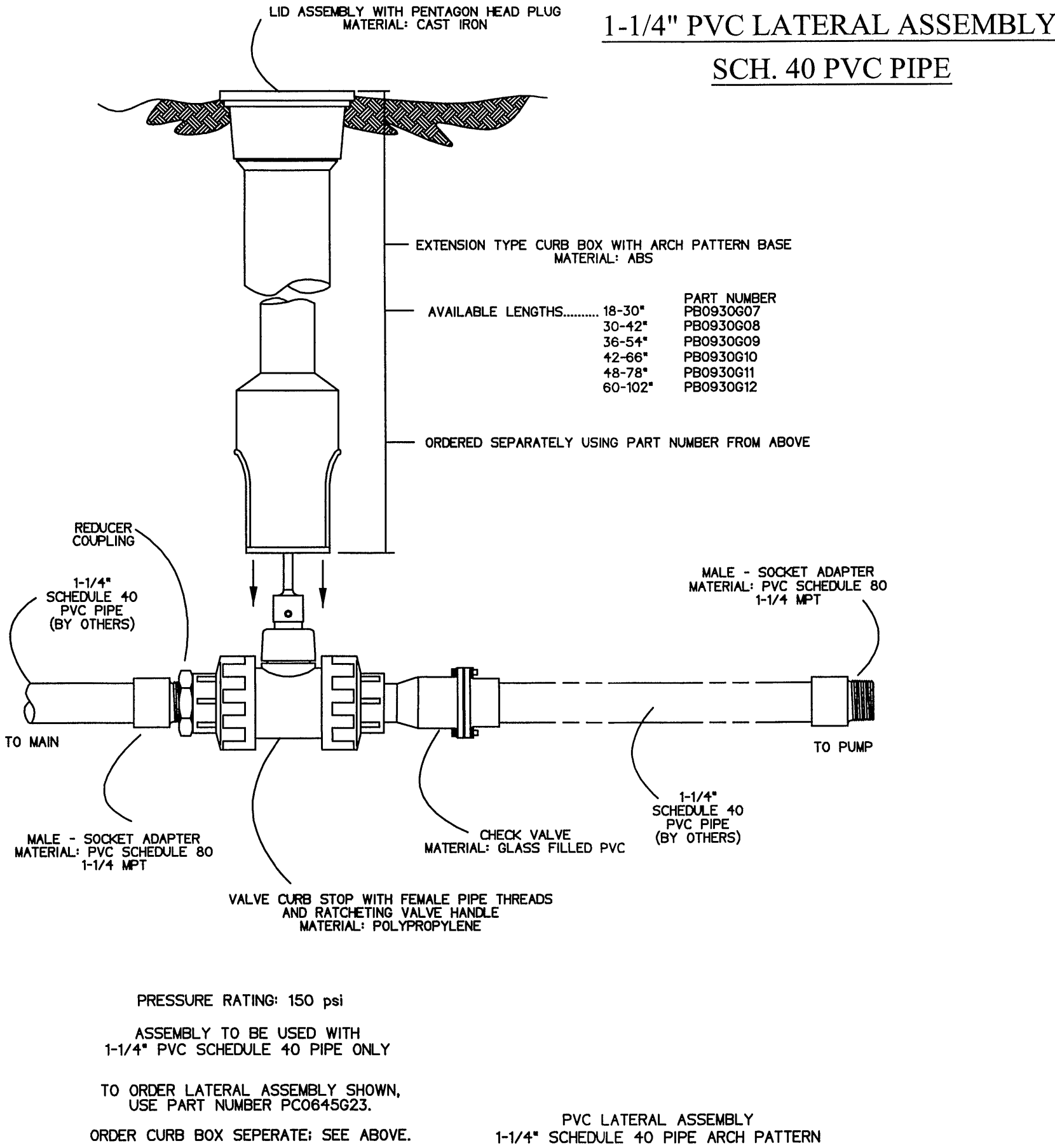


INSTALLATION STEPS

- 1- CUT PIPE SQUARE.
- 2- MAKE SURE PIPE IS ROUND, NOT FLATTENED. CLEAN OFF ANY DIRT SO THAT THE SURFACE IS SMOOTH.
- 3- INSERT PIPE THROUGH COMPRESSION NUT. POSITION SPLIT RING ON THE END OF PIPE WITH THE TAPERED END TOWARD THE COMPRESSION NUT.
- 4- SLIDE COMPRESSION NUT OVER SPLIT RING AND ALIGN IT WITH THE THREADS ON THE BODY.
- 5- INSERT PIPE INTO THE BODY OF THE FITTING UNTIL FIRMLY SEATED.
- 6- TIGHTEN COMPRESSION NUT SECURELY TO THE FITTING BODY.

PRECAUTIONS

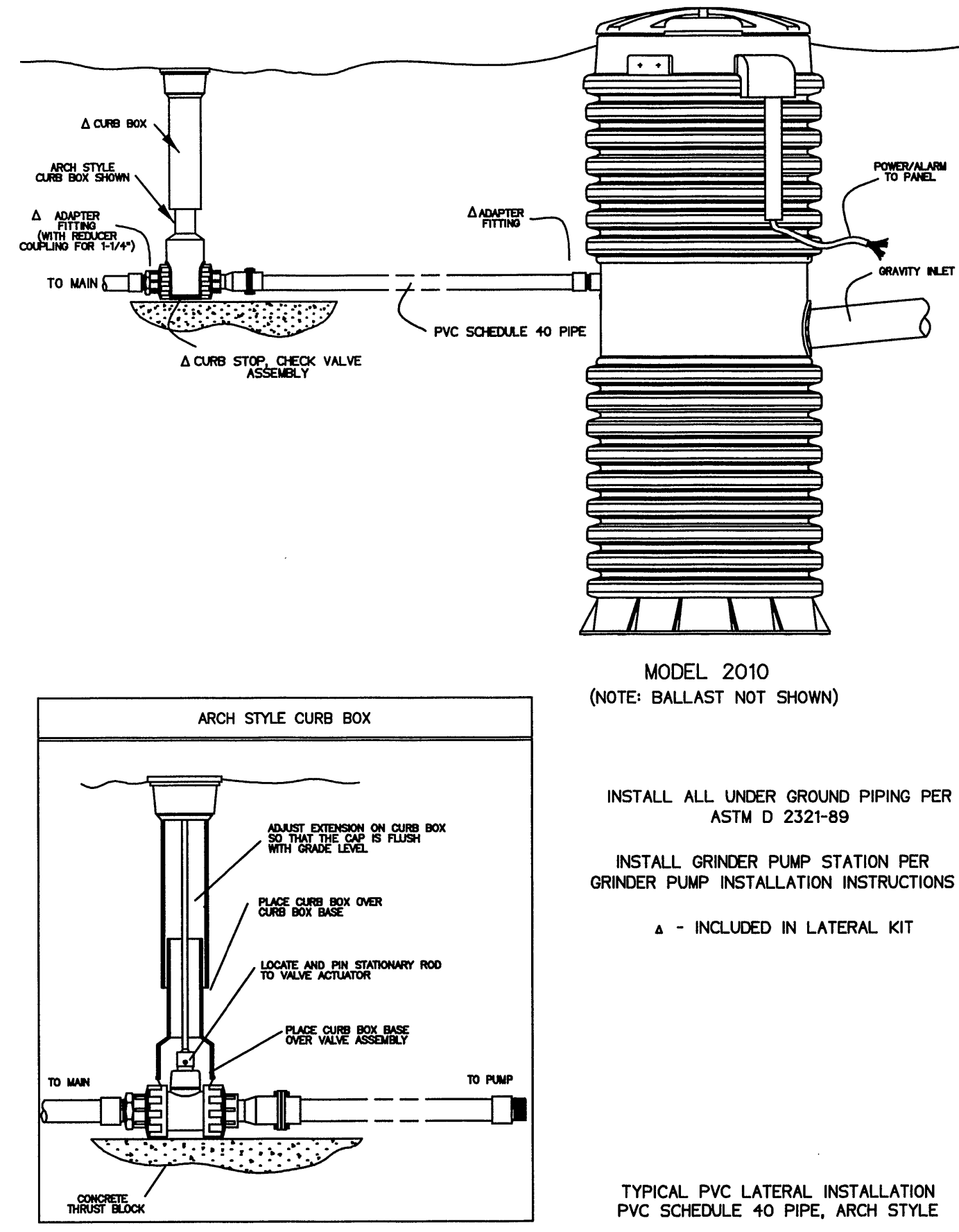
- 1- ALWAYS PRESSURE TEST FOR LEAKS PRIOR TO BACKFILLING.
- 2- FITTINGS CAN BE DAMAGED BY IMPROPER HANDLING. PROTECT THREADS. DO NOT DROP. BACKFILL AND COMPACT CAREFULLY PER ASTM D2321 SO THAT FITTINGS ARE NOT STRESSED BY THE WEIGHT OF THE EARTH.
- 3- PROTECT BALL VALVE ASSEMBLIES FROM FREEZING. ATTEMPTING TO FORCIBLY OPEN OR CLOSE A FROZEN VALVE WILL DESTROY THE VALVE.



LOW PRESSURE SYSTEM FORCE MAIN

1. THE LOW PRESSURE COMMON FORCEMAIN SYSTEM SHOWN HEREON IS DESIGNED TO PROVIDE PRESSURIZED SEWER SERVICE FOR THE 64 RESIDENTIAL LOTS LOCATED ALONG THE SHORELINE OF SMITH MOUNTAIN LAKE WITHIN LAKEWATCH PLANTATION. THE SYSTEM HAS BEEN SPECIFICALLY DESIGNED SUCH THAT EACH RESIDENTIAL LOT WILL UTILIZE A STANDARDIZED E-ONE 2010-74 GRINDER PUMP STATION.
2. THE DEVELOPER AND OR RESIDENTIAL LOT OWNER WILL BE REQUIRED TO OBTAIN A COPY OF SHEET C1.26, OF THE LAKEWATCH PLANTATION COMMUNITY SEWER SYSTEM IN ORDER TO PROCURE A SEWER SYSTEM PERMIT FROM FRANKLIN COUNTY HEALTH DEPARTMENT AND BUILDING PERMIT FROM FRANKLIN COUNTY. COPIES OF SHEET 1.26 AND CONSTRUCTION SPECIFICATIONS SHALL BE OBTAINED FROM ACS DESIGN, PROJECT ENGINEER AND WASTEWATER CONSULTANT.
3. INSTALLATION OF THE E-ONE GRINDER PUMP SYSTEM AND SERVICE CONNECTION SHALL ADHERE TO THE MINIMUM STANDARDS SET FORTH WITHIN THESE CONSTRUCTION DRAWINGS AND AS SPECIFIED BY THE MANUFACTURER. THE DEVELOPER, BUILDER OR LOT OWNER SHALL REFER TO THE CONSTRUCTION DRAWINGS CONTAINED HEREIN FOR SPECIFIC LOCATION AND INSTRUCTIONS FOR CONNECTION TO THE COMMON LOW PRESSURE FORCEMAIN.
4. AUDIO AND VISUAL ALARMS SHALL BE LOCATED WITHIN EACH RESPECTIVE RESIDENCE.
5. INSTALLATION OF THE PACKAGED GRINDER PUMP STATION AND PRESSURE FORCEMAIN SERVICE CONNECTION SHALL BE PERFORMED BY A LICENSED PLUMBER AND ELECTRICIAN AS DICTATED AND ENFORCED BY FRANKLIN COUNTY BUILDING DEPARTMENT.
6. AFTER INSTALLATION, THE BUILDER OR DEVELOPER SHALL CONTACT ACS DESIGN TO SCHEDULE AN ON-SITE INSPECTION OF THE GRINDER PUMP STATION INSTALLATION. PRIOR TO INSTALLATION, THE SYSTEM SHALL BE FULLY COMPLETE AND TESTED BY THE CONTRACTOR. ALL PUMPS, ALARMS, AND CONTROLS SHALL BE VERIFIED AS TO PROPER FUNCTION. AFTER VERIFICATION, THE CONTRACTOR SHALL DEACTIVATE THE PUMP STATION AND FILL IT WITH WATER. THE CONTRACTOR SHALL CONTACT ACS DESIGN TO SCHEDULE AN INSPECTION. INSPECTION SHALL INCLUDE VERIFICATION THAT ALL ALARMS, CONTROLS, AND THE PUMP ARE FUNCTIONING CORRECTLY.
7. THE GRINDER PUMP STATION SHALL NOT BE INSTALLED WITHIN ANY RESIDENTIAL STRUCTURE. THE GRINDER STATION SHALL BE LOCATED SUCH THAT IT'S TOP ELEVATION IS LOWER THAN THE LOWEST FINISHED FLOOR ELEVATION WITHIN THE RESIDENCE.
8. ACS DESIGN SHALL FURNISH AN INSPECTION CERTIFICATION TO THE FRANKLIN COUNTY HEALTH DEPARTMENT AND THE CONTRACTOR AFTER COMPLETION OF THE SITE INSPECTION.

TYPICAL PVC SCH. 40 LATERAL INSTALLATION

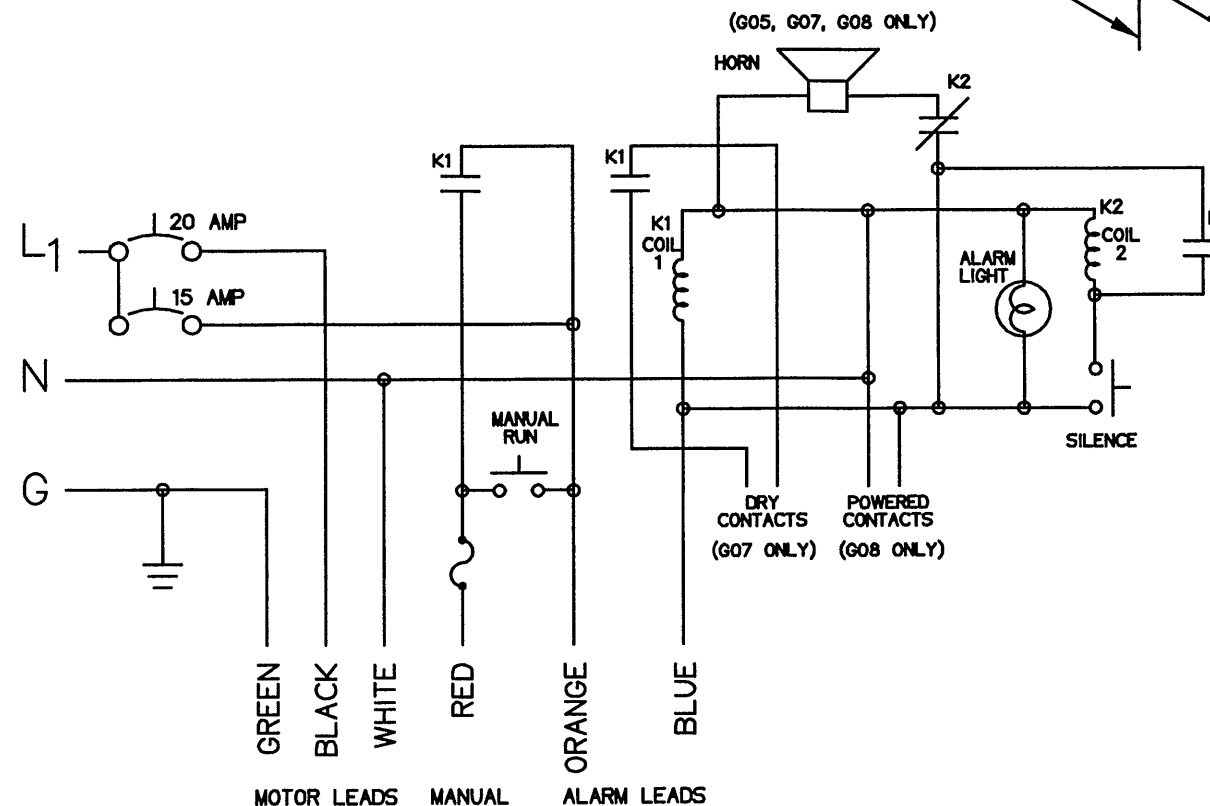
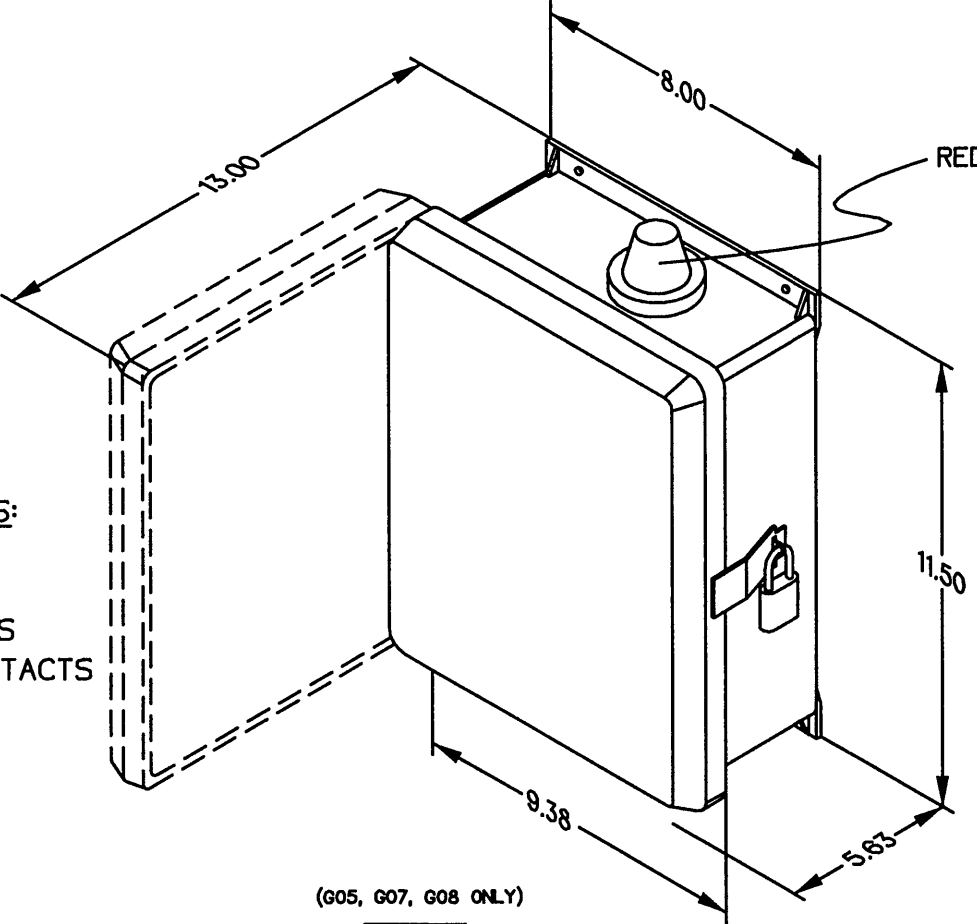


PUMP STATION CONTROL BOX

SIMPLEX MOD 250

REDUNDANT RUN (HIGH LEVEL)  
VISUAL & AUDIBLE ALARM  
MANUAL SILENCE  
MANUAL RUN  
120VAC  
4X FIBERGLASS ENCLOSURE

- AVAILABLE CONFIGURATIONS:
- G05 - STANDARD
  - G06 - WITHOUT HORN
  - G07 - WITH DRY CONTACTS
  - G08 - WITH POWERED CONTACTS



CONTROL CABLE:  
TYPE TC: DIRECT BURIAL, 12AWG,  
SIX CONDUCTOR.

PANEL, 4X SIMPLEX, 120V



ACS DESIGN

Design-Engineering-Planning  
Construction Management

2203 Peters Creek Road, NW  
Roanoke, Virginia 24017  
Phone: 540 562 2345  
Fax: 540 562 2344  
Email: info@acsdesignllc.com  
www.acsdesignllc.com

LAKEWATCH PLANTATION  
COMMUNITY SEWER SYSTEM  
PHASE 1  
FRANKLIN COUNTY, VIRGINIA

DRAWN BY: CEK  
DESIGNED BY: CEK  
CHECKED BY: DME  
DATE: JAN. 26, 2006  
SCALE: NOT TO SCALE

REVISIONS
DATE
COMMENT
REVISION

SHEET No.

C1.26

E ONE  
DETAILS

JOB No. 05076