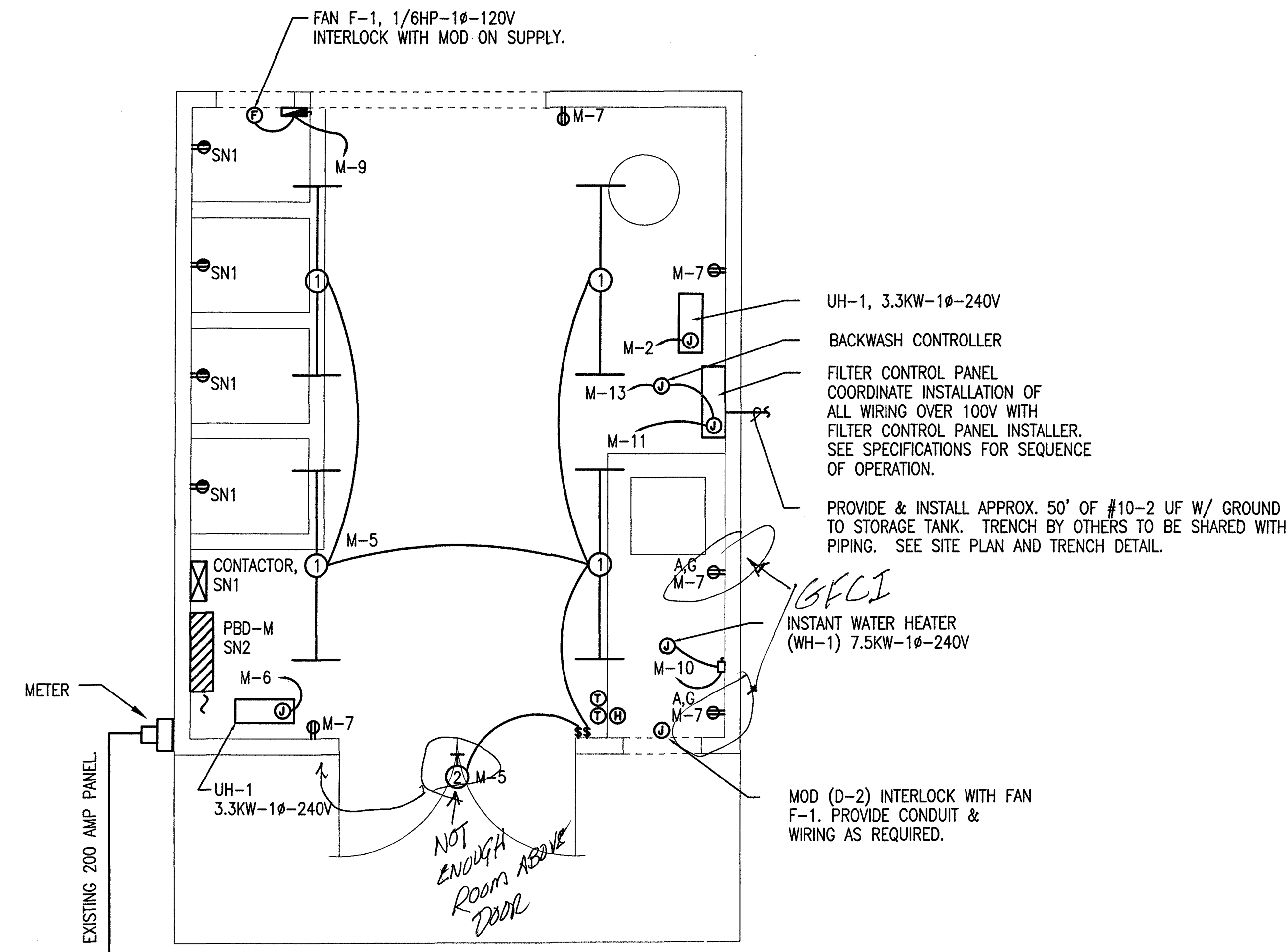


SHEET NOTES:

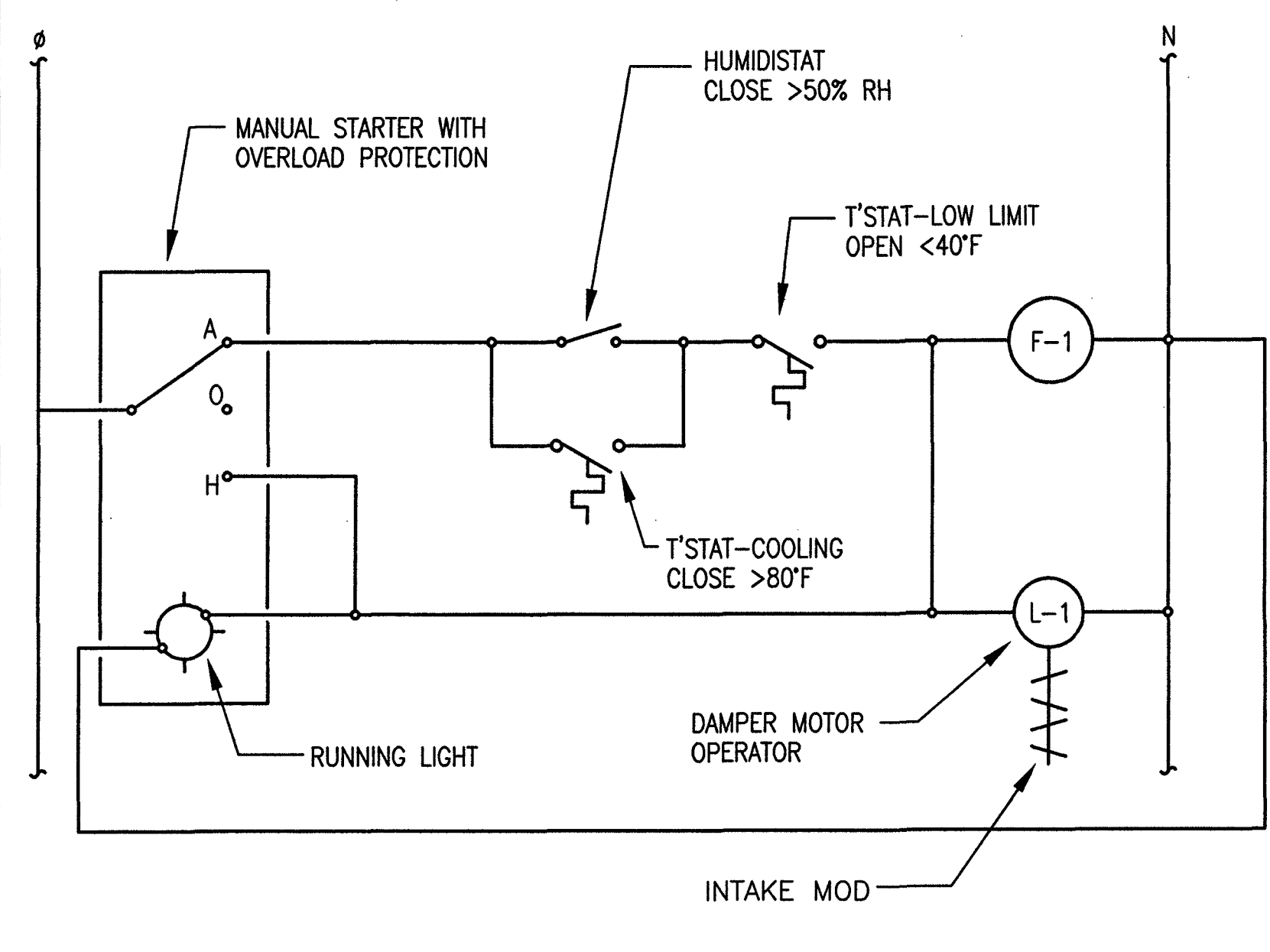
- SN1 TOP HALF OF DUPLEX RECEPTACLES TO BE SWITCHED THROUGH LIGHTING CONTACTOR TO BE ENERGIZED WHENEVER PUMP IN WELL HOUSE IS OPERATING, CIRCUIT M-1. BOTTOM HALF OF DUPLEX RECEPTACLES SHALL BE ON NORMAL UNSWITCHED CIRCUIT M-3. PROVIDE & INSTALL SQUARE-D LXG20, (OR EQUAL) LIGHTING CONTACTOR, TWO (2) POLE, MECHANICALLY HELD IN NEMA-1 ENCLOSURE WITH REQUIRED COIL VOLTAGE AND RELAYS TO INTERLOCK WITH FILTER CONTROL PANEL TO PROVIDE SEQUENCE OF OPERATION AS DESCRIBED ABOVE. CONNECT CONTACTOR CONTROLS TO CIRCUIT M-15
- SN2 PROVIDE & INSTALL PANEL MOUNT TVSS ABOVE PBD-M, SEE POWER RISER.

LEGEND

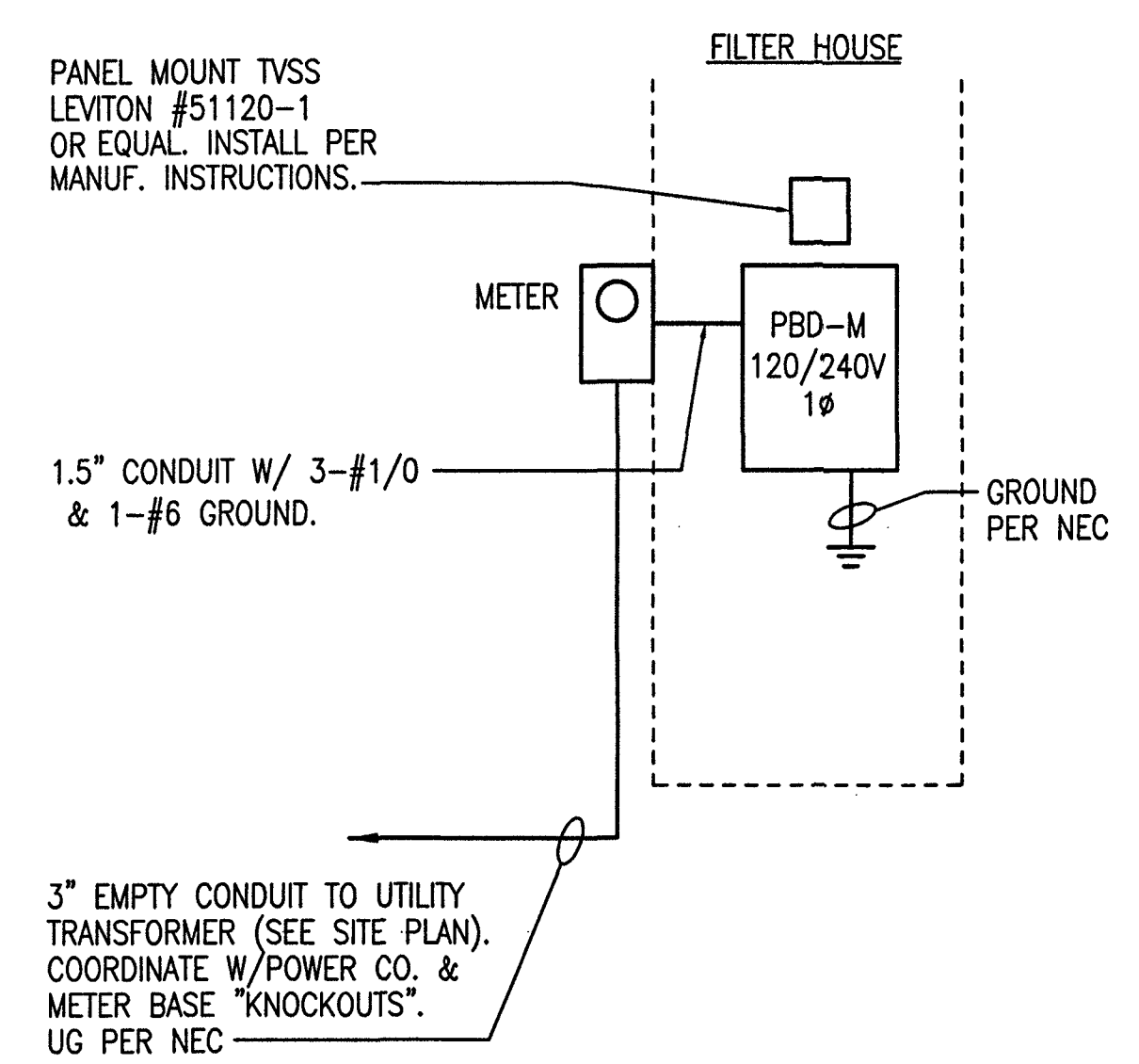
⊕	SINGLE POLE LIGHT SWITCH
⊕ ^G	DUPLEX RECEPTACLE, MOUNT @ 48" UNLESS NOTED OTHERWISE
⊕ ^A	DUPLEX RECEPTACLE WITH GROUND FAULT INTERRUPTER
⊕ [⊖]	DUPLEX RECEPTACLE - ABOVE COUNTER BACKSPASH
⊕ [⊕]	DUPLEX RECEPTACLE - TOP HALF SWITCHED
⊕ [⊕]	WIRING JUNCTION BOX OR EQUIP. JUNCTION
⊕	CONTACTOR
PBD	PANELBOARD
▨	PANELBOARD
F	FAN
⊕	COMBINATION MOTOR CONTROLLER
⊕	SAFETY DISCONNECT SWITCH
⊕	HOMERUN TO PANELBOARD
⊕	WIRERUN
⊕	ELECTRICAL GROUND
UF	UNDERGROUND FEEDER CABLE
SN3	SHEET NOTE
SN3	SHEET NOTE
MOD	MOTOR OPERATED DAMPER
UG	UNDERGROUND PER NEC
TVSS	TRANSIENT VOLTAGE SURGE SUPPRESSOR
EGC	EQUIPMENT GROUNDING CONDUCTOR
⊕	FLUORESCENT STRIP LIGHT FIXTURE - LITHONIA SERIES C W/ TWO 32 WATT T-8 LAMPS, COLD WEATHER BALLAST, 120 V OR EQUAL.
⊕	SECURITY LIGHT FIXTURE - LITHONIA SERIES TW, W/ 50W, HIGH PRESSURE SODIUM LAMP AND COLD WEATHER BALLST 120 V. OR EQUAL.
⊕	THERMOSTAT
⊕	HUMIDISTAT



FILTER HOUSE PLAN
SCALE: 1/2" = 1'-0"



F-1 CONTROL SCHEMATIC
NO SCALE



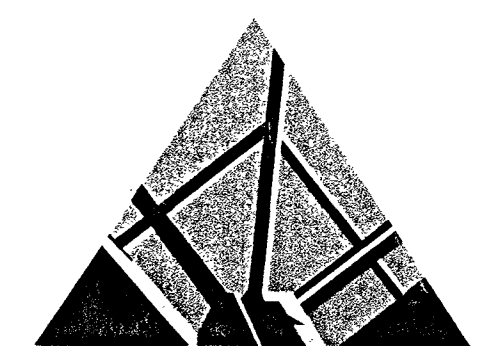
ELECTRICAL POWER RISER
NO SCALE

PANELBOARD (PBD) "M"

150 AMPS MCB, 120/240 VOLT, 1 PHASE, 3 WIRE, 30 SPACES, NEMA 1, SURFACE MOUNTED ENCLOSURE.

CIRC. NO.	DESCRIPTION OF LOAD	SPACE #	AMP/POLES	WIRE SZ.	PHASE AMPS		WIRE SZ.	AMP/POLES	SPACE #	DESCRIPTION OF LOAD	CIRC. NO.	
					A	C						
1	CHEM FEED METERING PUMPS	1	20/1	12	9.2		12	20/2	2	UH-1, 3.3KW	2	
3	AGITATOR MOTORS	3	20/1	12		6.0	12	20/2	4			
5	LIGHTING	5	20/1	12	3.3		12					
7	GENERAL, RECEPTACLES	7	20/1	12	13.8		12		6	UH-1, 3.3KW	6	
9	FAN F-1 AND MOD D-2	9	20/1	12	5.0		12		8			
11	FILTER PUMP CONTROL PANEL CONTROLS	11	20/1	12	31.3		8	40/2	10	WH-1, 7.5KW	10	
13	BACKWASH CONTROLLER	13	20/1	12		4.0	8		12			
15	CONTACTOR CONTROLS	15	20/1	12		31.3	8		14	SPACE ONLY	14	
17	SPARE	17	20/1			3.0			16	SPACE ONLY	16	
19	SPARE	19	20/1						18	SPACE ONLY	18	
21	SPARE	21	20/1						20	SPACE ONLY	20	
23	SPACE ONLY	23							22	SPACE ONLY	22	
25	SPACE ONLY	25							24	SPACE ONLY	24	
27	SPACE ONLY	27							26	SPACE ONLY	26	
29	SPACE ONLY	29							28	SPACE ONLY	28	
									30	SPACE ONLY	30	
TOTAL LOAD					77.9	79.4						

GENERAL NOTES



SPECTRUM DESIGN

325 MOUNTAIN AVE. ROANOKE, VIRGINIA 24016 540.345.8020
ROANOKE • MARION • VIRGINIA BEACH

Iron & Manganese Removal Filter
LONG ISLAND ESTATES

SPECTRUM DESIGN PROJECT NO. 99007



DATE: 25 February 2000
DESIGN ARCHITECT: RACHEL E. FOFE
PROJECT ARCHITECT: No. 031548
CHECKED BY: GAS/RCF
DRAWN BY: RCF
REVISIONS: GMR
NUMBER: DATE:

SHEET TITLE
ELECTRICAL PLAN