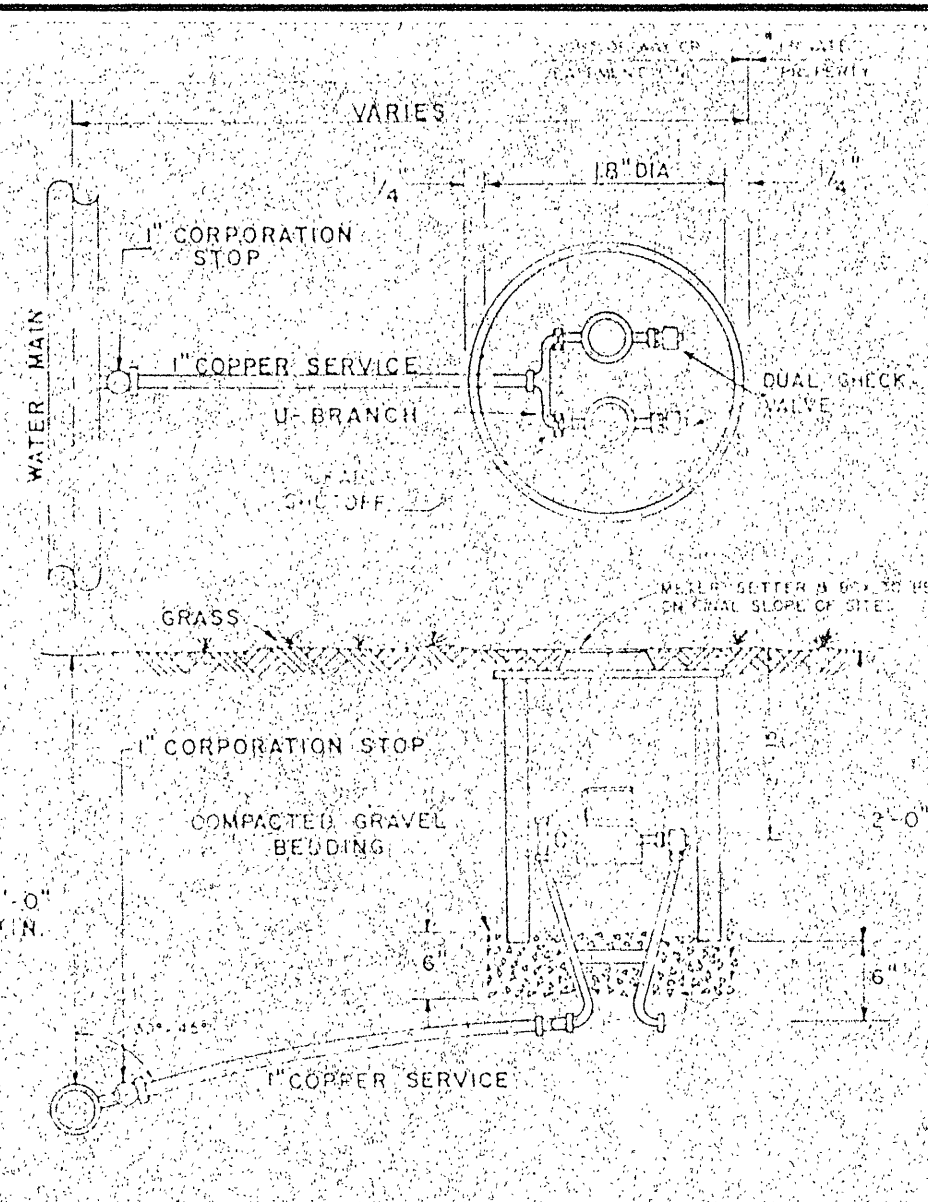
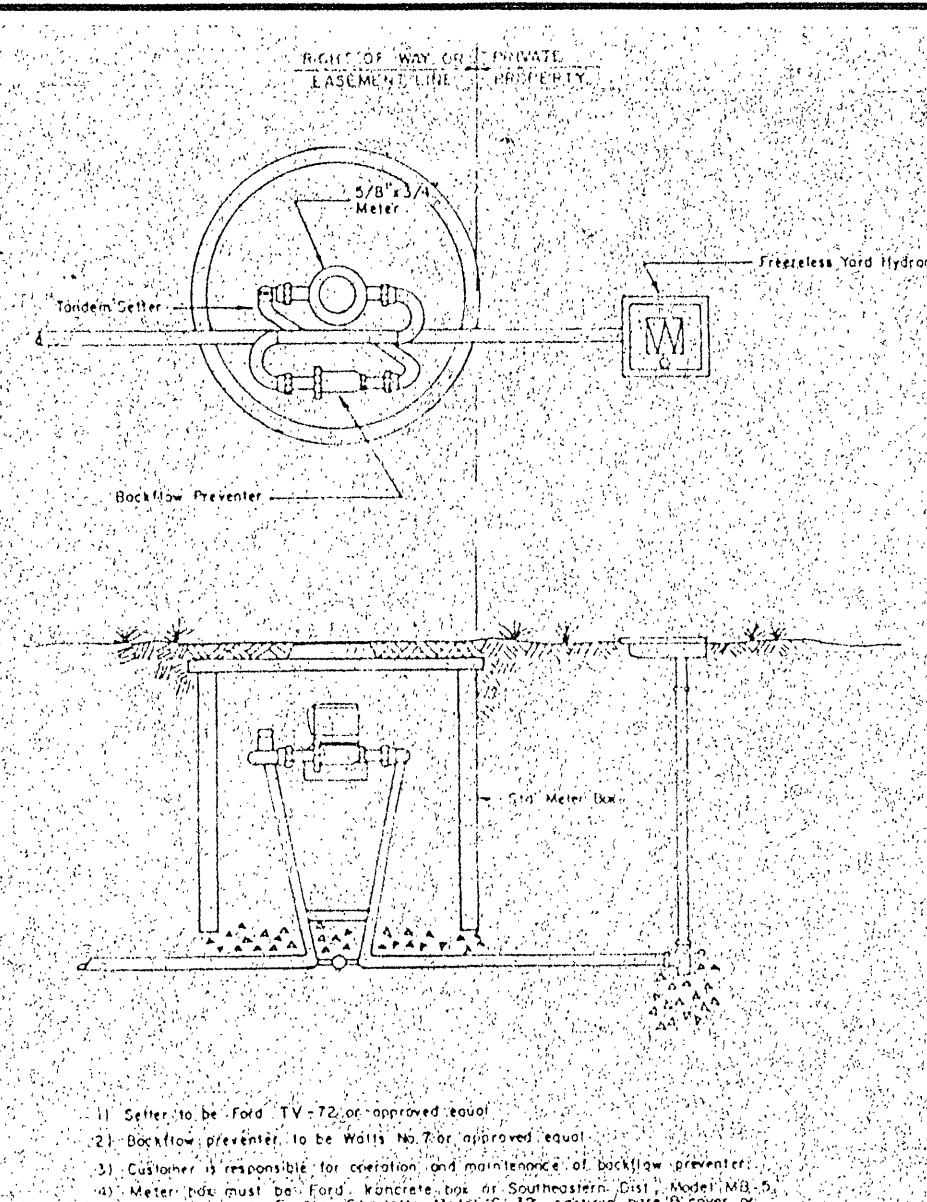


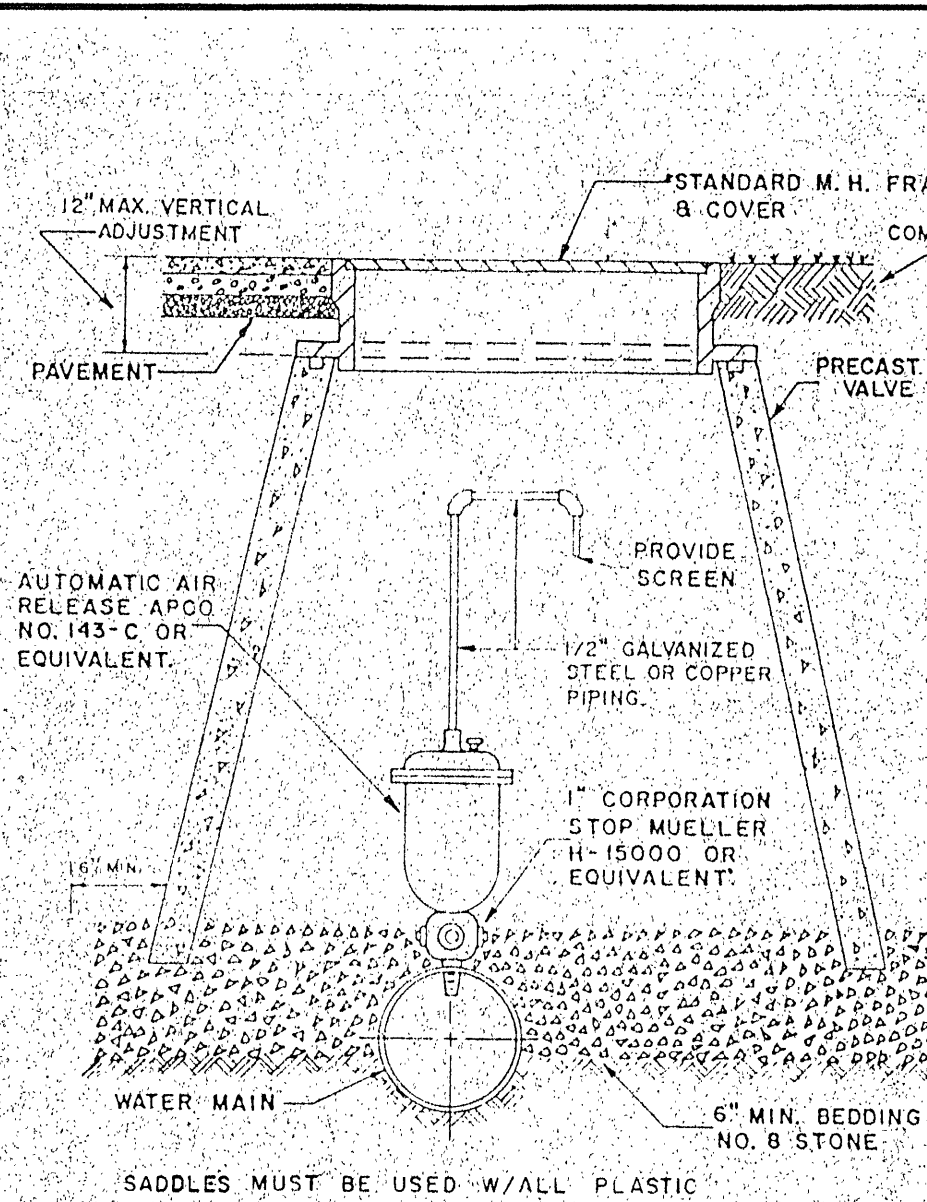
SINGLE RESIDENTIAL WATER SERVICE



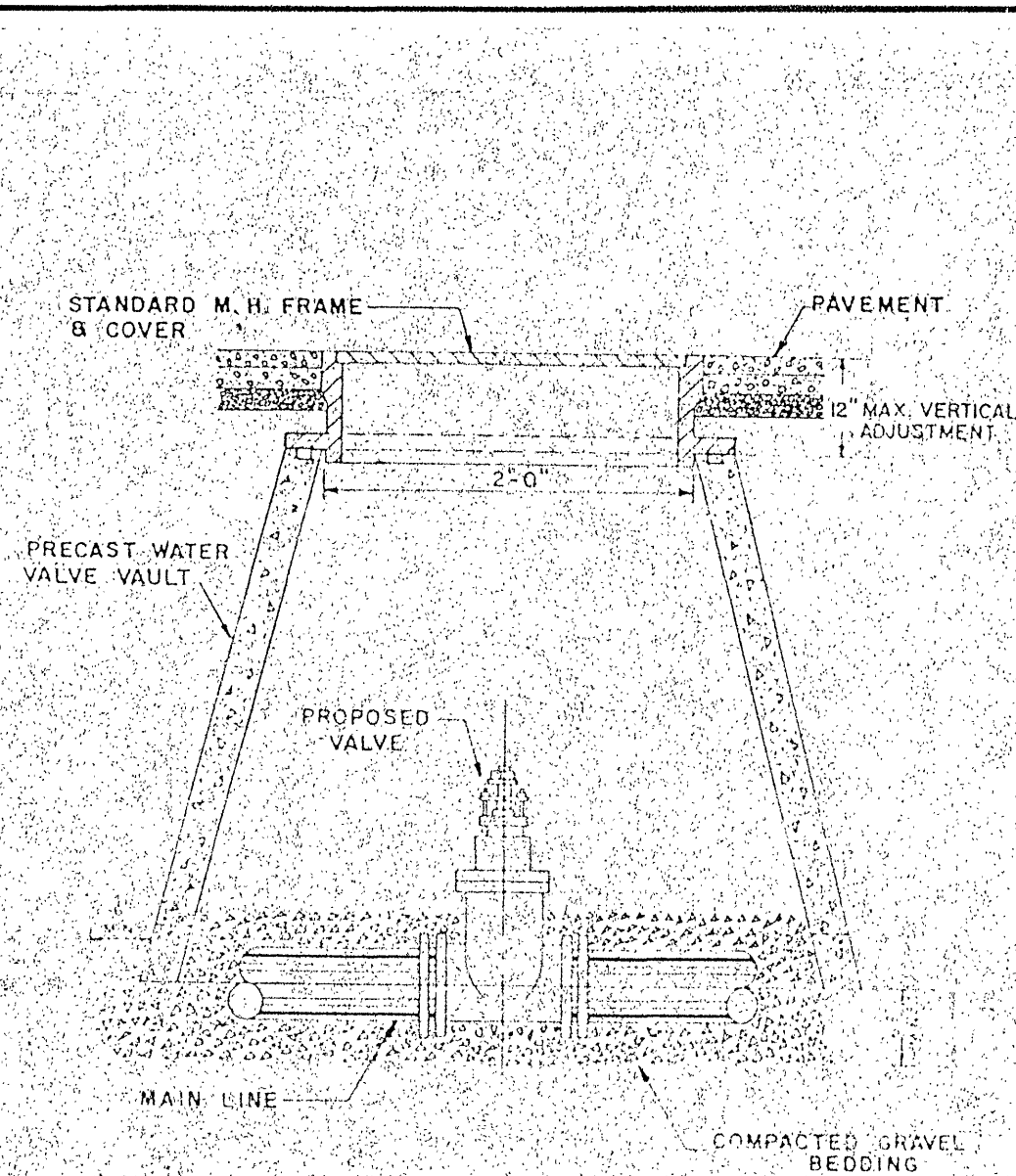
DOUBLE RESIDENTIAL WATER SERVICE



TYPICAL SPRINKLER SERVICE



AUTOMATIC AIR RELEASE ASSEMBLY



WATER LINE VALVE INSTALLATION

GENERAL WATER NOTES

A MINIMUM COVER OF THREE (3) FEET IS REQUIRED OVER PROPOSED LINES.

CONTRACTOR SHALL BE RESPONSIBLE FOR LOCATING AND UNCOVERING VALVE VAULTS AFTER PAVING AND ADJUSTMENT TO FINAL GRADE IF NECESSARY.

ALL EXISTING UTILITIES MAY NOT BE SHOWN OF MAY NOT BE SHOWN THE EXACT LOCATION. THE CONTRACTOR SHALL COMPLY WITH STATE WATER WORKS REGULATIONS, SECTION 12.05.03, WHERE LINES CROSS.

ALL TRENCHES IN EXISTING OR FUTURE HIGHWAY RIGHTS OF WAY SHALL BE COMPACTED ACCORDING TO V.D.H.&T. STANDARDS.

LINES SHALL BE STAKED PRIOR TO CONSTRUCTION.

WATER MAIN SHALL BE MINIMUM CLASS 52 DUCTILE IRON IN ACCORDANCE TO AWWA C151 OR DR-14 PVC IN ACCORDANCE TO AWWA C-900.

VAULT & WATER STANDARDS FOR CONSTRUCTION

1. Vaults, manhole bases, risers, tapers and grade rings shall be precast reinforced concrete manufactured in accordance to Virginia Department of Transportation, Road and Bridge Specifications, Section 503.
2. Manhole base and riser sections construction shall be vertical with maximum 1" in 4' tilt.
3. A maximum of 2 construction grade rings or maximum of 1' of grade rings and frame and cover adjustment are allowable.
4. Final adjustment of frame and cover shall be in accordance to frame and cover adjustment detail using non shrink concrete with maximum of 4 bricks or concrete blocks for grade control. Frame and cover are to be set at finish grade or 1/4" above finish grade in pavement and yard areas and minimum 6" above finish grade in other areas. Manhole frames and covers are not to be set in drainage swale, valley gutter, etc.
5. Joints and openings in manhole units shall be made watertight by using butyl sealants, "O" ring gaskets or mastic. The concrete surface shall be cleaned prior to use of sealant.
6. Frame and Covers
 - a) Dewey Brothers Inc. MH - RCR - 56.
 - b) Approved equal.
7. All lift holes, openings around pipe, etc. shall be filled from inside and outside to thickness of structure.
8. All units used in manhole and vault construction shall be securely connected by interlocking between units, concrete collars or other approved methods.
9. Area around meter box at a radius of 4' to be on finish grade and unobstructed except for road construction.

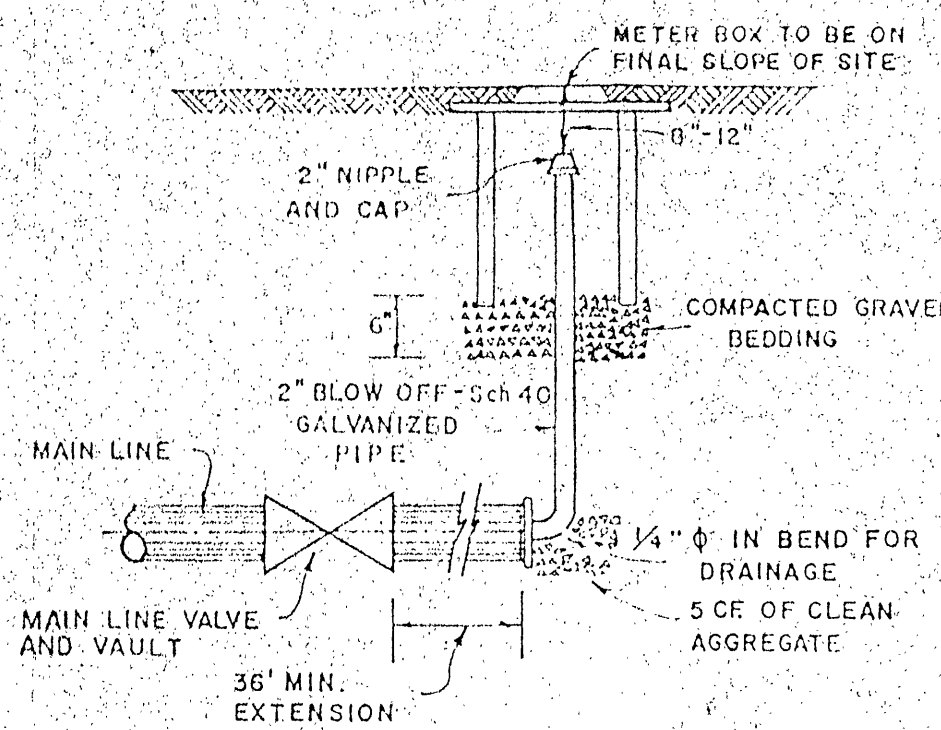
APPROVED MATERIALS

1. Meter Boxes
 - a) Ford Ironcrete meter box with No. 2 ironcrete top or approved equal.
 - b) Southeastern Distributor Model MB-5 Plastic box with Ford or Charlotte Model C-32 cast iron base and cover (Not approved for roadway area).
 - c) Approved equal.
2. Meter Setter (including inlet riser valve and double check valve on outlet)
 - a) Ford VBH 72-15-MD
 - b) Approved equal.
3. Meter Setter Extender or Riser
 - a) Not Allowed unless approved by the Utility Director.
4. Corporation Stop
 - a) Mueller Model H-1500.
 - b) Ford Model F-600.
 - c) Approved equal.
5. U-Branch
 - a) Ford Model U28-43.
 - b) Mueller Model H 15362.
 - c) Approved equal.
6. Service Saddles (for PVC pipe)
 - a) Ford Model PS 202 and PC 202 with stainless steel band and bolts.
 - b) Approved equal.

Pipe Size	Tee or Dead End			90° Bend			45° Bend			22.5° Less Bend		
	A	B	C	A	B	C	A	B	C	A	B	C
6"	1.2	3.0	1.0	1.5	3.3	2.0	1.2	2.3	1.0	1.2	2.0	1.0
8"	1.7	3.8	1.5	2.0	4.5	2.0	1.3	3.6	1.5	1.3	2.0	1.0
10"	2.0	4.9	2.0	3.0	4.7	2.0	1.7	4.5	2.0	1.5	2.6	1.5
12"	2.5	5.7	2.0	3.5	5.8	2.5	2.2	5.0	2.5	1.7	3.3	1.5
15"	1.5	7.0	3.0	4.5	8.0	3.5	3.0	6.5	3.0	2.5	4.0	2.0

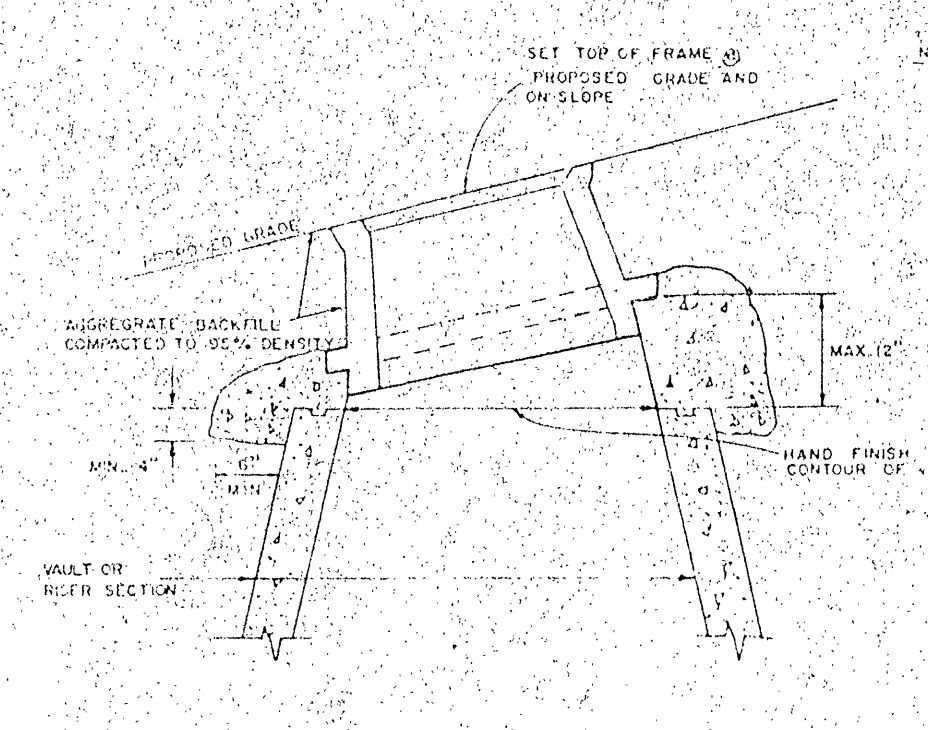
1. The above noted dimensions are minimum based on concrete anchor extending to undisturbed soil, water pressure not to exceed 150 psi and, minimum soil bearing capacity of 2,500 psf/unsatisfactory soil bearing or excess pressure will require additional design.
2. Concrete shall not be poured on joints or bolts.
3. Concrete to be minimum 3,000 psi - 28 day compressive strength.

THRUST BLOCK FOR HORIZONTAL & LOWER VERTICAL BENDS



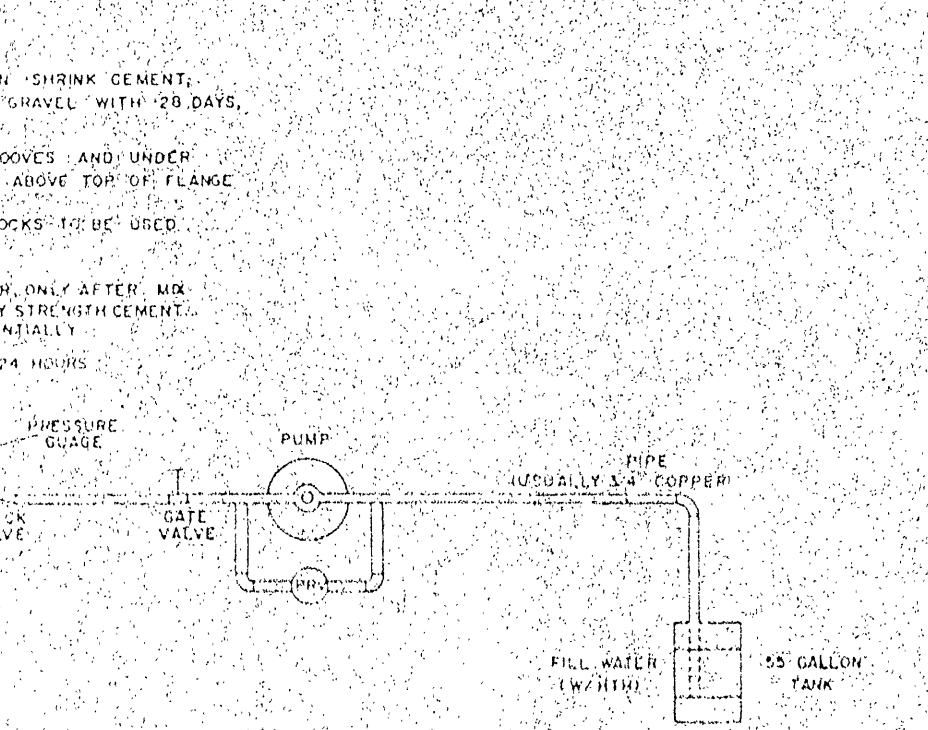
BLOW OFF ASSEMBLY FOR MAIN LINE TEMPORARY TERMINATION

ALTERNATE VALVE VAULT (MANHOLE)



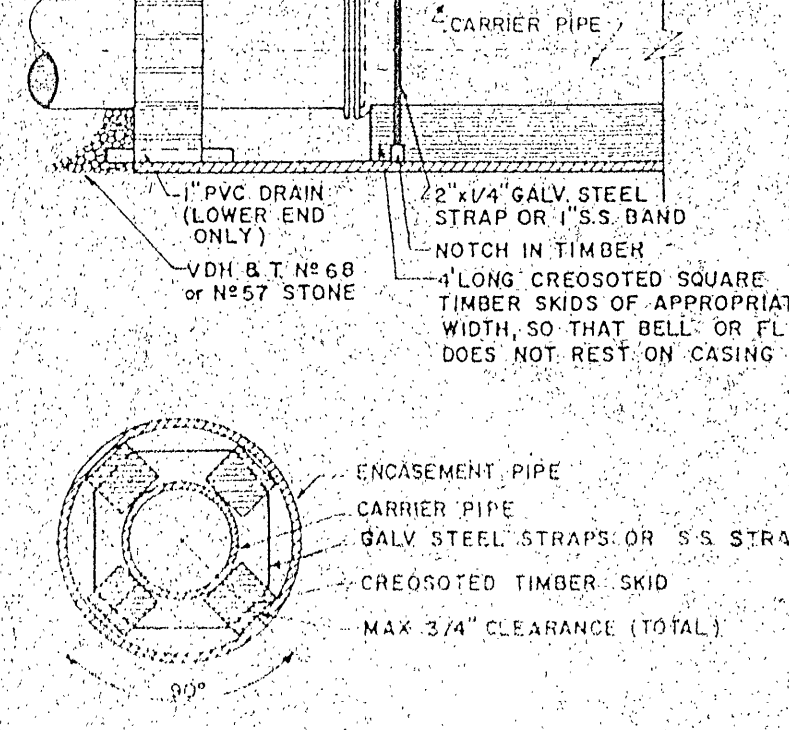
MANHOLE FRAME & COVER ADJUSTMENT

FIRE HYDRANT SETTING



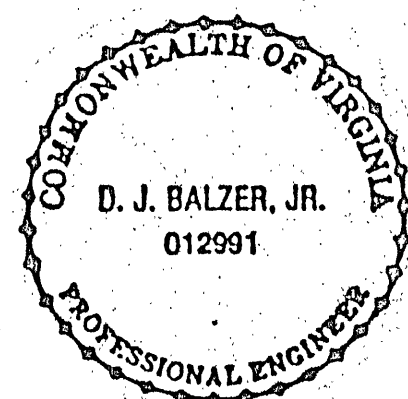
TYPICAL WATER PRESSURE TEST RIG

MANHOLE FRAME AND COVER



PIPE SUPPORT IN CASING PIPE

- ① ADDED EOC MEASURES, REV. IN ACCORDANCE W/ VDOT & CO. COMMENTS.
- ② REV. WATERLINE EASEMENT AT CUL-DE-SAC.
- ③ ADDED SANITARY SEWER EASEMENT.
- ④ REV. IN ACCORDANCE W/ VDOT COMMENTS.



BALZER AND ASSOCIATES, INC.
D.J. BALZER, JR.
012991
PROFESSIONAL ENGINEER

PLANNERS ARCHITECTS
ENGINEERS SURVEYORS

16 S. College Avenue
Salem, Virginia 24153
Phone: 703/389-7323
FAX: 703/389-5042

501 Branchway Road
Suite 100
Richmond, Virginia 23236
Phone: 804/794-0571
FAX: 804/794-2635

FAIRWAY BAY
WATER DETAILS
FRANKLIN COUNTY, VIRGINIA

DRAWN BY CCB
DESIGNED BY PMT
CHECKED BY DJB
DATE FEBRUARY 10, 1989

REVISIONS
① 3/14/89
② 3/30/89
③ 4/1/89
④ 4/10/89

SCALE: N.T.S.
SHEET NO.

3 OF 3

JOB NO. 1035