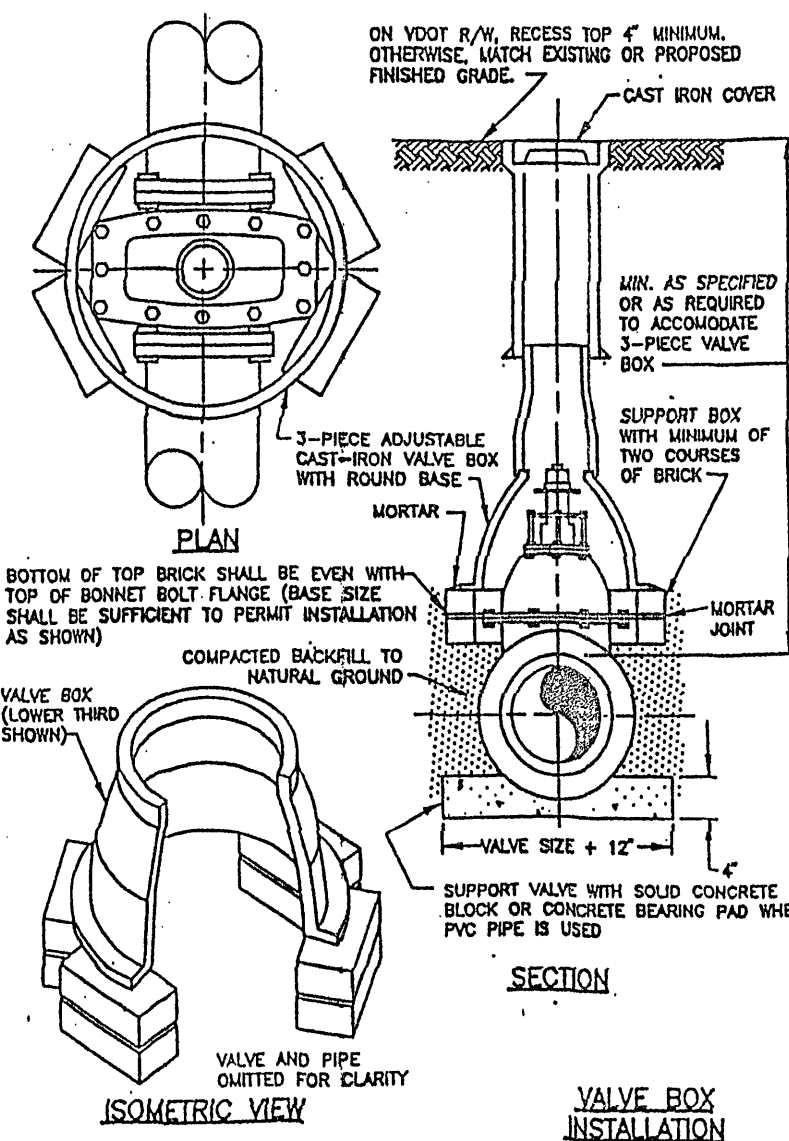
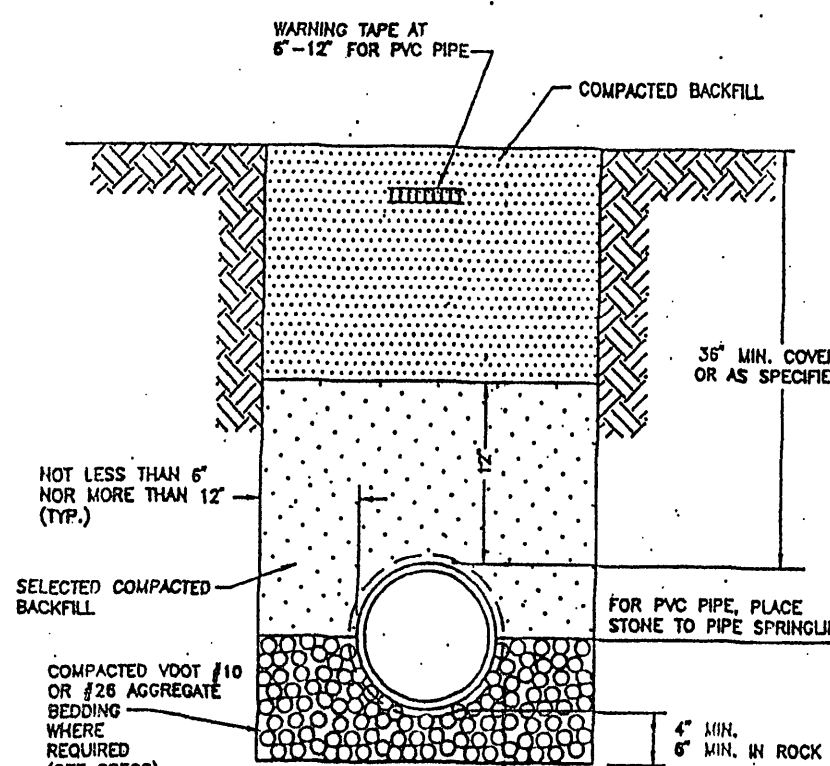


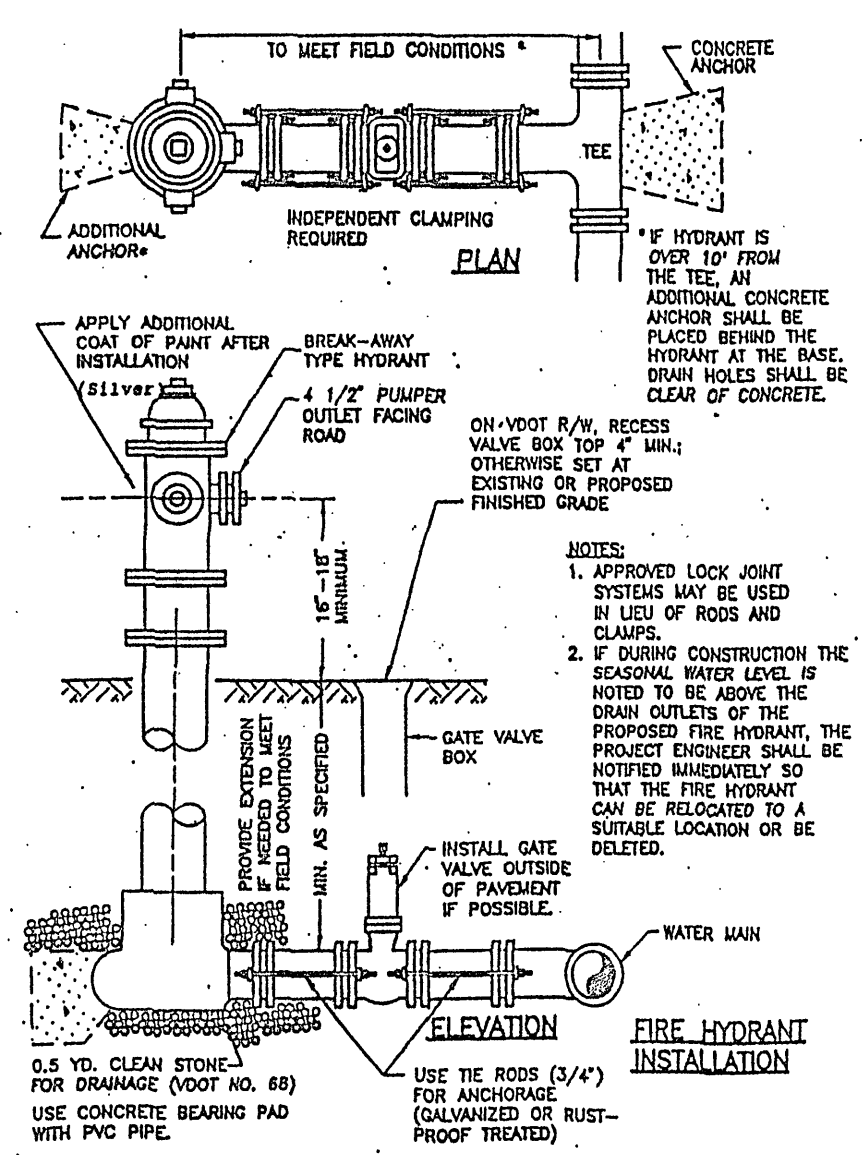
WATERLINE - SANITARY SEWER CROSSING



VALVE BOX INSTALLATION

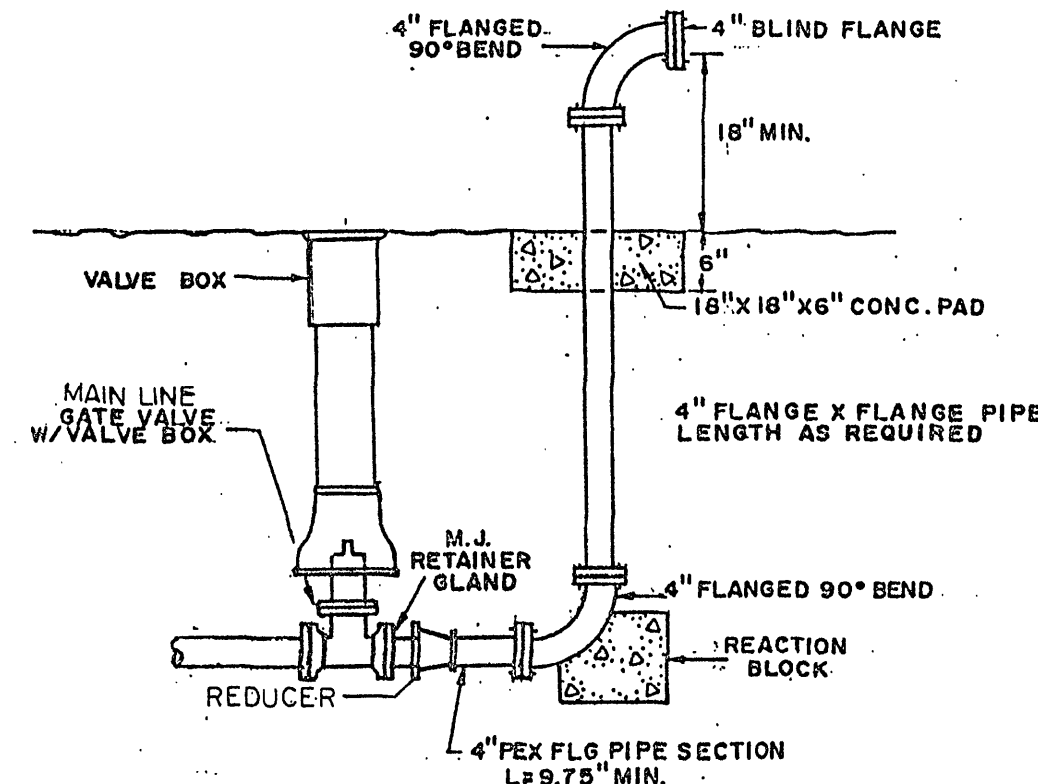


WATER MAIN TRENCH BED

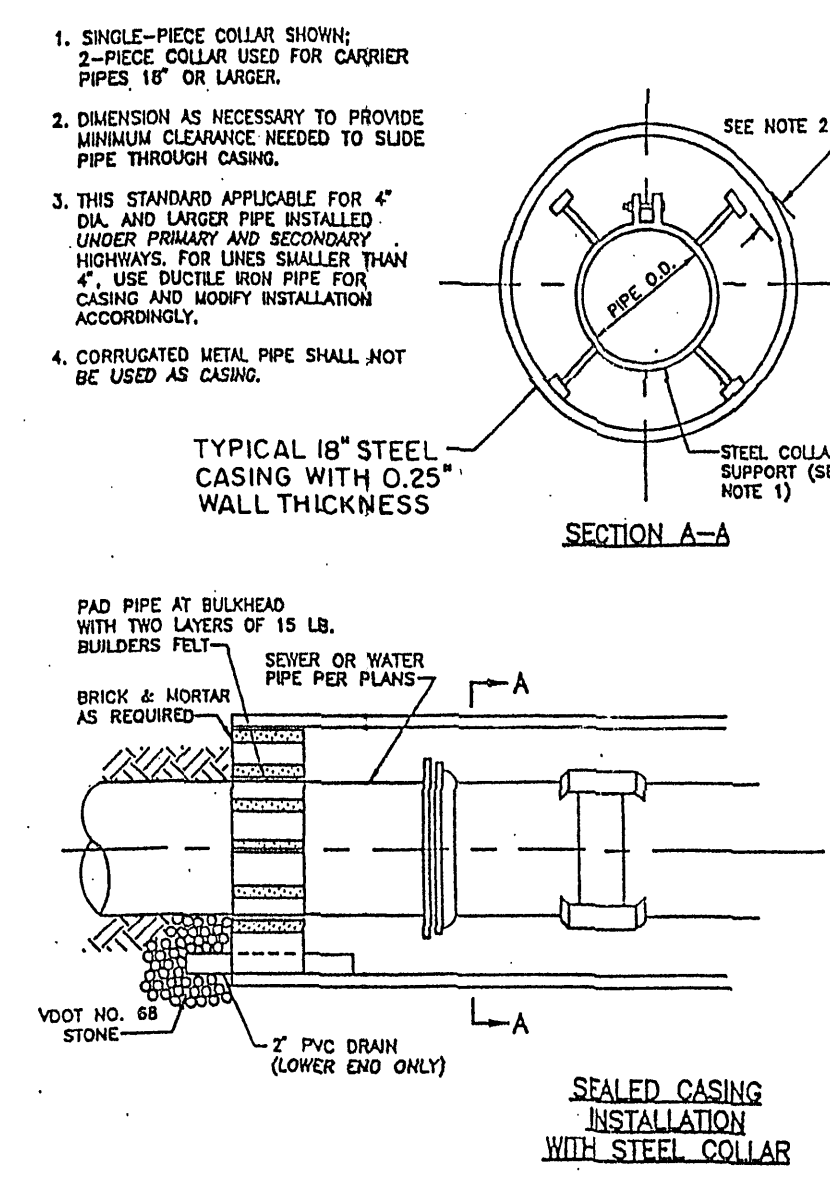


FIRE HYDRANT INSTALLATION

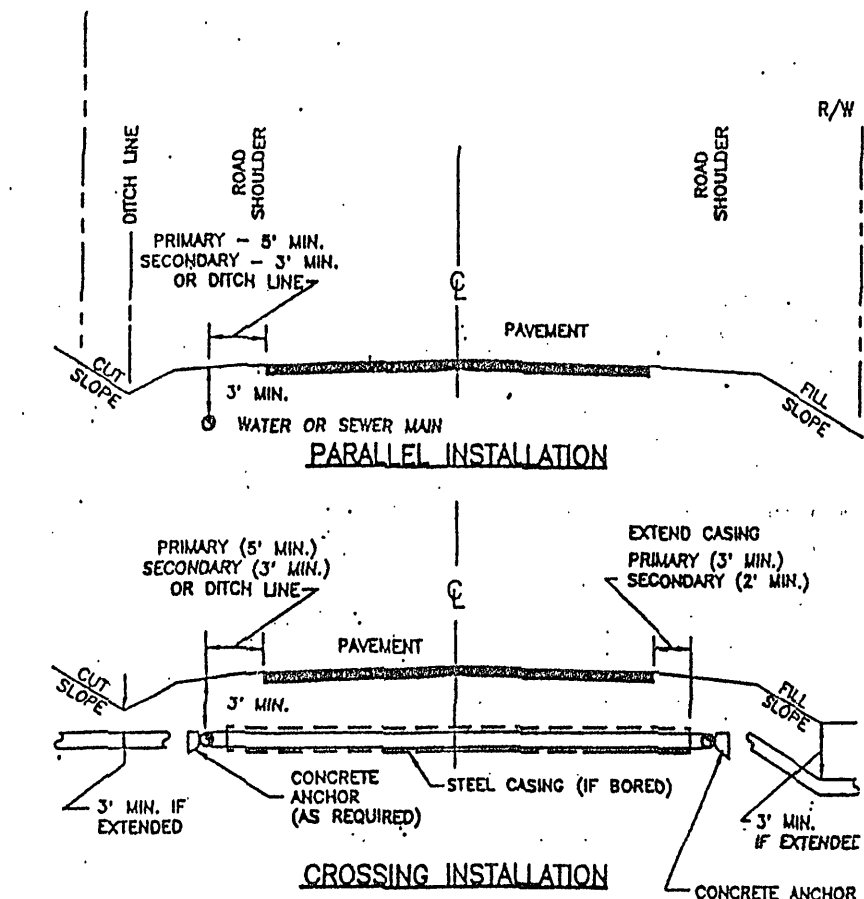
THE FIRE HYDRANT IS NOT REQUIRED TO BE INSTALLED AT THIS TIME. CONTRACTOR TO INSTALL PLUG JUST PAST VALVE.



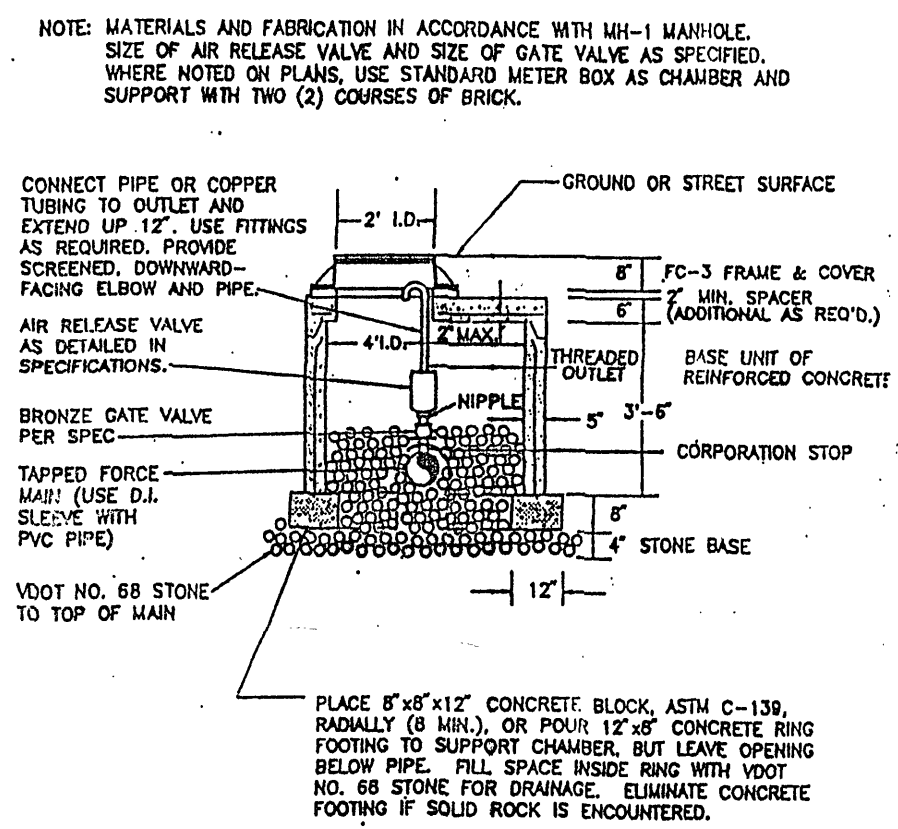
FOUR (4) INCH BLOW OFF ASSEMBLY N.T.G.



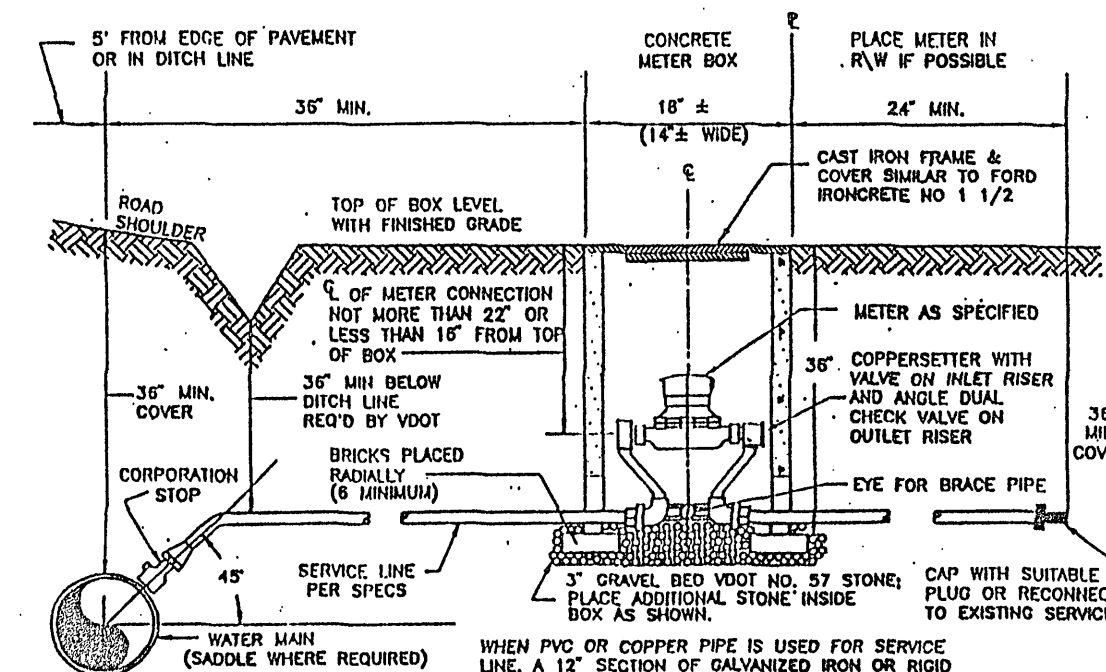
SEALED CASING INSTALLATION WITH STEEL COLLAR



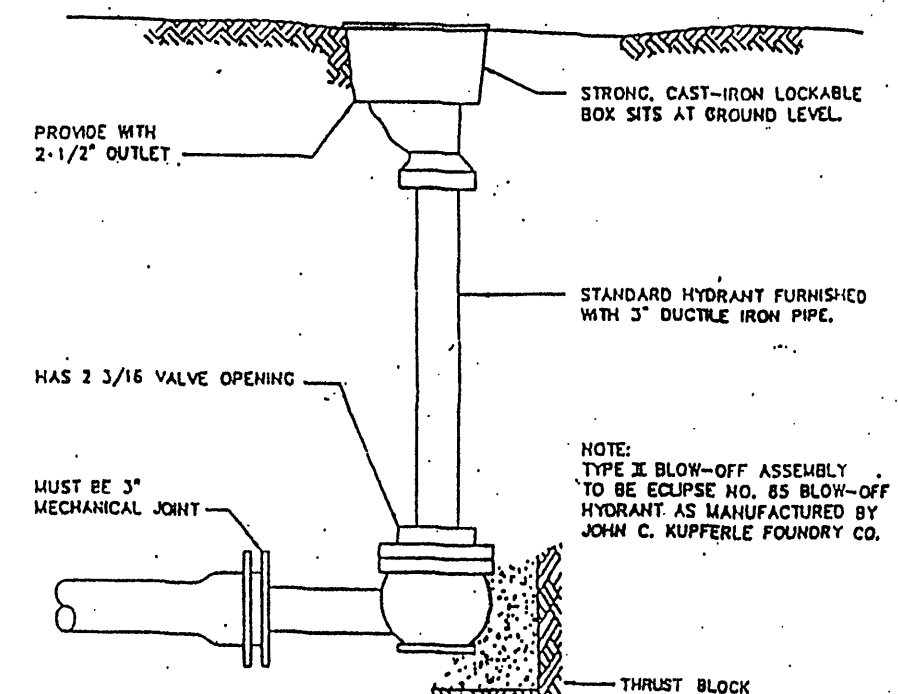
TYPICAL WATER OR SEWER MAIN LOCATION WITHIN VDOT RIGHT-OF-WAY



PRECAST CHAMBER FOR AIR RELEASE VALVE



WATER SERVICE CONNECTION TYPE 1 CONTRACTOR TO VERIFY SERVICE CONNECTION LOCATIONS PRIOR TO CONSTRUCTION.



LINE TERMINATION AND BLOWOFF ASSEMBLY 2\"/>

BERKLEY HOWELL & ASSOC., P.C.
ENGINEERS • SURVEYORS • PLANNERS
306 ENTERPRISE DRIVE, SUITE 200
FOREST, VIRGINIA 22551
PH: (434) 385-7548 FAX: (434) 385-8178

COMMONWEALTH OF VIRGINIA
JUL 10 2019
PROFESSIONAL

PARK PLACE WATER SYSTEM
IMPROVEMENTS FOR
ADDITION OF MONTEGO BAY
GILLS CREEK DISTRICT - FRANKLIN CO., VA.

MISC. DETAILS

DATE: 3-9-04

TECHNICIAN:

CHECKED BY:

REVISIONS

NO.	DATE

SCALES AS SHOWN

PROJ. NO. 030192 DIV.

SHEET NO. 10 OF 10

DRAWING NO.