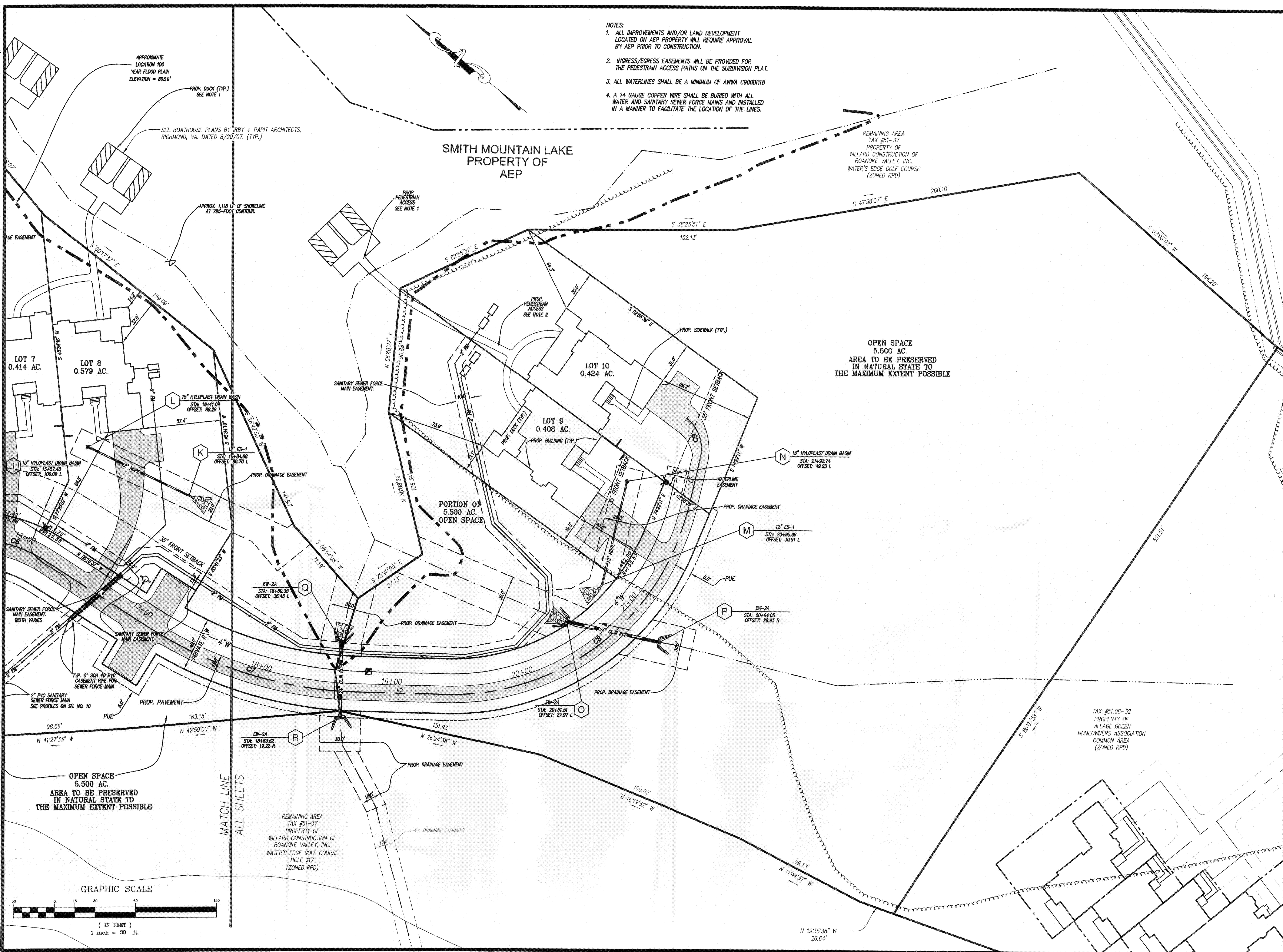


07037 comp01-05-dm02.plt
w:\drawings\2007\07037\eng\07037 comp01.dwg



- NOTES:
1. ALL IMPROVEMENTS AND/OR LAND DEVELOPMENT LOCATED ON AEP PROPERTY WILL REQUIRE APPROVAL BY AEP PRIOR TO CONSTRUCTION.
 2. INGRESS/EGRESS EASEMENTS WILL BE PROVIDED FOR THE PEDESTRAIN ACCESS PATHS ON THE SUBDIVISION PLAT.
 3. ALL WATERLINES SHALL BE A MINIMUM OF AWWA C900DR18
 4. A 14 GAUGE COPPER WIRE SHALL BE BURIED WITH ALL WATER AND SANITARY SEWER FORCE MAINS AND INSTALLED IN A MANNER TO FACILITATE THE LOCATION OF THE LINES.

LUMSDEN ASSOCIATES, P.C.
ENGINEERS-SURVEYORS-PLANNERS
ROANOKE, VIRGINIA

PHONE: (540) 774-4411
FAX: (540) 772-9445
E-MAIL: MAIL@LUMSDENPC.COM

4664 BRIMBLETON AVENUE
P.O. BOX 20669
ROANOKE, VIRGINIA 24018

DIMENSIONAL LAYOUT

GRANDE VILLAS AT THE WATER'S EDGE
PREPARED FOR
RKL HOLDINGS, LLC
UNION HALL MAGISTERIAL DISTRICT
FRANKLIN COUNTY, VIRGINIA

REVISIONS	
NO.	DESCRIPTION
1	REV. LOT 8 SEPTIC & PUMP TANK LOC.
2	
3	
4	
5	

DATE: **OCTOBER 17, 2007**

SCALE: **1"=30'**

COMMISSION NO.: **07-037**

SHEET **5 OF 11**