

# SITE SPECIFIC ESC NOTES AND OPTIONS (ESC NOTES):

ESC-1. PREVIOUS PLANS SHOW STORM INLETS PLANNED AT CERTAIN LOCATIONS; HOWEVER, NO INLETS WERE LOCATED, AND NO EVIDENCE OF INLETS WERE VISIBLE DURING A SITE INSPECTION OF NOVEMBER 2010. CONTRACTOR SHALL INSTALL TEMPORARY LEVEL SPREADER AS SHOWN.

ESC-2. (SEE SHEET C3) TWO EXISTING STORM PIPES ARE NOT CONNECTED. PRIOR TO MATERIAL PLACEMENT IN "MATERIAL PLACEMENT AREA #2", THE CONTRACTOR SHALL EXTEND THE EXISTING PIPE UTILIZING A CONCRETE COLLAR TO CONNECT THE PIPES, AND INSTALL A STORM STRUCTURE TO CONNECT THE TWO EXISTING PIPES.

## INITIAL EROSION AND SEDIMENT CONTROL MEASURES: PROVIDE THE FOLLOWING:

- (SAF) SAFETY FENCE MEETING VA ESCH STD. & SPEC. 3.01
- (CE) CONSTRUCTION ENTRANCE MEETING VA ESCH STD. & SPEC. 3.02
- (SF) SILT FENCE MEETING VA ESCH STD. & SPEC. 3.05
- (IP) INLET PROTECTION MEETING VA ESCH STD. & SPEC 3.07
- (DD) DIVERSION DIKE MEETING VA ESCH STD. & SPEC 3.09
- (LS) LEVEL SPREADER MEETING VA ESCH STD. & SPEC. 3.21
- (TO) TOPSOILING MEETING VA ESCH STD. & SPEC 3.30

## ADDITIONAL NOTES AND COMMENTS ON ITEM DN-3:

ITEM DN-3 IS AN ITEM NECESSARY TO COMPLETE THE TOTAL PROJECT SCOPE, BUT IS BEYOND THE SCOPE OF SERVICES IN CONJUNCTION WITH "SMITH MOUNTAIN LAKE SHORING PLAN (PREPARED BY HAYWARD BAKER, INC). THE WORK SHALL BE PERFORMED BY A LOCAL GRADING CONTRACTOR. ONCE ACTUAL MEANS AND METHODS FOR THIS AREA ARE FINALIZED, BASED ON DISCUSSIONS WITH THE SELECTED GRADING CONTRACTOR, ADDITIONAL NOTES AND DOCUMENTATION WILL BE PROVIDED TO THE LOCALITY FOR REVIEW AND COMMENT ON THE SPECIFIC MEASURES TO BE UTILIZED IN ORDER TO REMOVE THE MATERIAL AS WELL AS KEEP SEDIMENT FROM SMITH MOUNTAIN LAKE.

# GENERAL DEMOLITION AND SLOPE REMEDIATION NOTES:

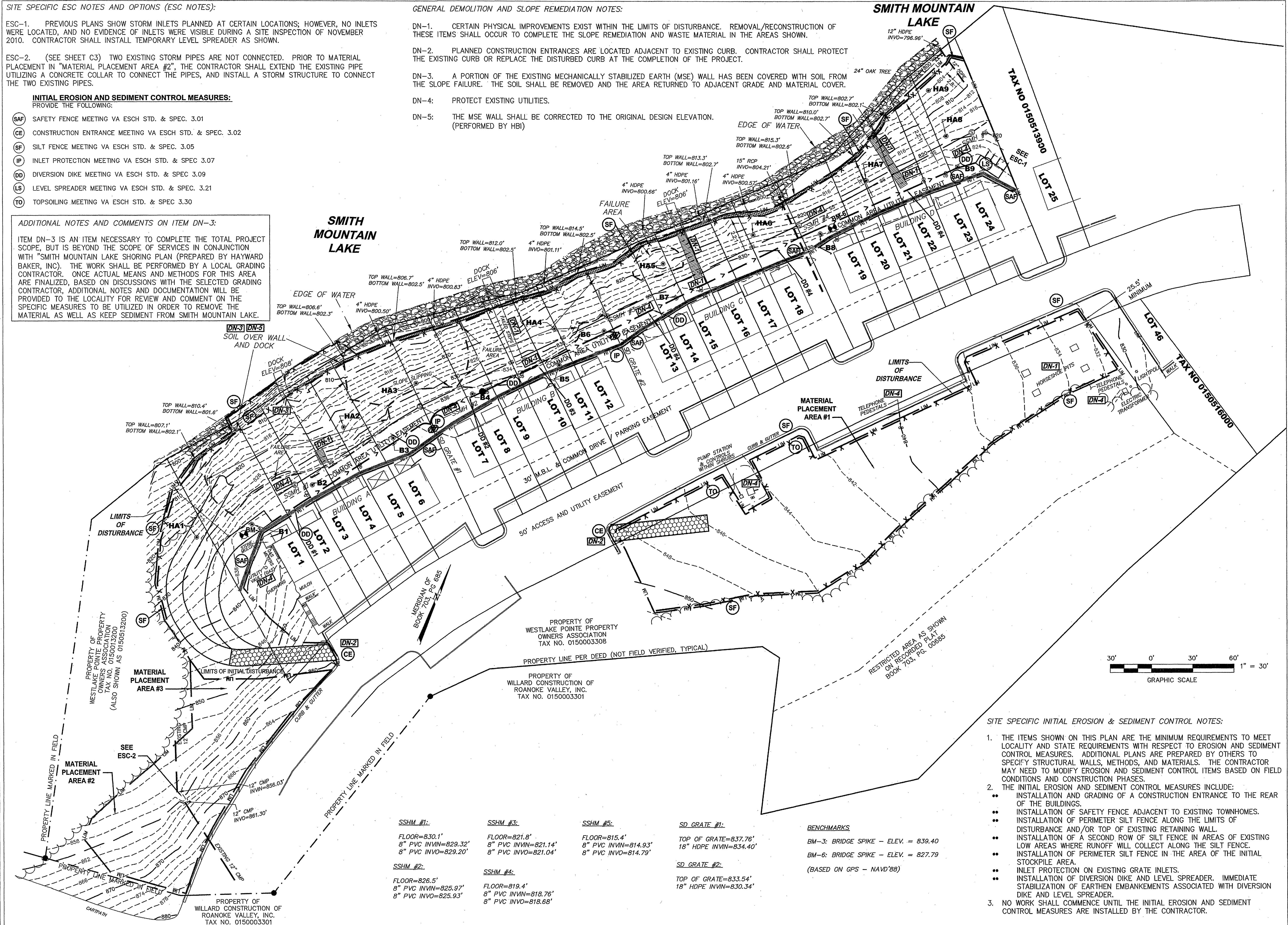
DN-1. CERTAIN PHYSICAL IMPROVEMENTS EXIST WITHIN THE LIMITS OF DISTURBANCE. REMOVAL/RECONSTRUCTION OF THESE ITEMS SHALL OCCUR TO COMPLETE THE SLOPE REMEDIATION AND WASTE MATERIAL IN THE AREAS SHOWN.

DN-2. PLANNED CONSTRUCTION ENTRANCES ARE LOCATED ADJACENT TO EXISTING CURB. CONTRACTOR SHALL PROTECT THE EXISTING CURB OR REPLACE THE DISTURBED CURB AT THE COMPLETION OF THE PROJECT.

DN-3. A PORTION OF THE EXISTING MECHANICALLY STABILIZED EARTH (MSE) WALL HAS BEEN COVERED WITH SOIL FROM THE SLOPE FAILURE. THE SOIL SHALL BE REMOVED AND THE AREA RETURNED TO ADJACENT GRADE AND MATERIAL COVER.

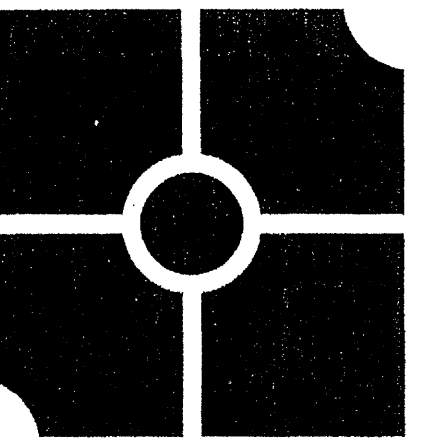
DN-4: PROTECT EXISTING UTILITIES.

DN-5: THE MSE WALL SHALL BE CORRECTED TO THE ORIGINAL DESIGN ELEVATION. (PERFORMED BY HBI)



## SITE SPECIFIC INITIAL EROSION & SEDIMENT CONTROL NOTES:

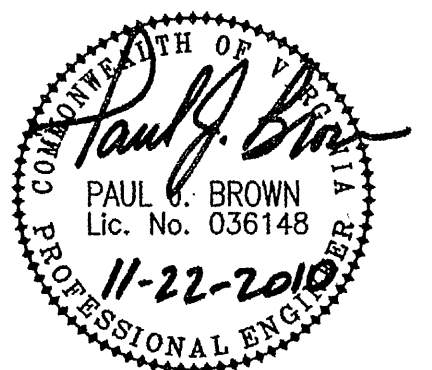
- THE ITEMS SHOWN ON THIS PLAN ARE THE MINIMUM REQUIREMENTS TO MEET LOCALITY AND STATE REQUIREMENTS WITH RESPECT TO EROSION AND SEDIMENT CONTROL MEASURES. ADDITIONAL PLANS ARE PREPARED BY OTHERS TO SPECIFY STRUCTURAL WALLS, METHODS, AND MATERIALS. THE CONTRACTOR MAY NEED TO MODIFY EROSION AND SEDIMENT CONTROL ITEMS BASED ON FIELD CONDITIONS AND CONSTRUCTION PHASES.
- THE INITIAL EROSION AND SEDIMENT CONTROL MEASURES INCLUDE:
  - INSTALLATION AND GRADING OF A CONSTRUCTION ENTRANCE TO THE REAR OF THE BUILDINGS.
  - INSTALLATION OF SAFETY FENCE ADJACENT TO EXISTING TOWNHOMES.
  - INSTALLATION OF PERIMETER SILT FENCE ALONG THE LIMITS OF DISTURBANCE AND/OR TOP OF EXISTING RETAINING WALL.
  - INSTALLATION OF A SECOND ROW OF SILT FENCE IN AREAS OF EXISTING LOW AREAS WHERE RUNOFF WILL COLLECT ALONG THE SILT FENCE.
  - INSTALLATION OF PERIMETER SILT FENCE IN THE AREA OF THE INITIAL STOCKPILE AREA.
  - INLET PROTECTION ON EXISTING GRATE INLETS.
  - INSTALLATION OF DIVERSION DIKE AND LEVEL SPREADER. IMMEDIATE STABILIZATION OF EARTHEN EMBANKMENTS ASSOCIATED WITH DIVERSION DIKE AND LEVEL SPREADER.
- NO WORK SHALL COMMENCE UNTIL THE INITIAL EROSION AND SEDIMENT CONTROL MEASURES ARE INSTALLED BY THE CONTRACTOR.



**parker**  
DESIGN GROUP

816 Boulevard  
Salem, Virginia 24153  
Phone: 540-387-1153  
Fax: 540-389-5767  
www.parkerdg.com

These documents are the property of Parker Design Group (PDG) and may not be reproduced or used without the express permission of PDG. Any reuse of these documents without authorization of PDG will be at the sole risk of the individual or entity utilizing said documents.



## Erosion & Sediment Control Plan for Westlake Pointe Slope Remediation Gills Creek Magisterial District Franklin County, Virginia

## REVISIONS:

Review Comments & Wall at Lot 1  
PJB 2010-11-22

DESIGNED BY: REC/PJB  
DRAWN BY: REC/PJB  
CHECKED BY: SRB/PJB  
SCALE: 1" = 30'  
DATE: 12 November 2010

N.B.: JR282

DESIGNED BY: REC/PJB

DRAWN BY: REC/PJB

CHECKED BY: SRB/PJB

SCALE: 1" = 30'

DATE: 12 November 2010

## SHEET TITLE:

Existing Conditions  
and Initial  
ESC Measures

**C02**

02 OF 05

PROJECT NUMBER:

09-0209-03