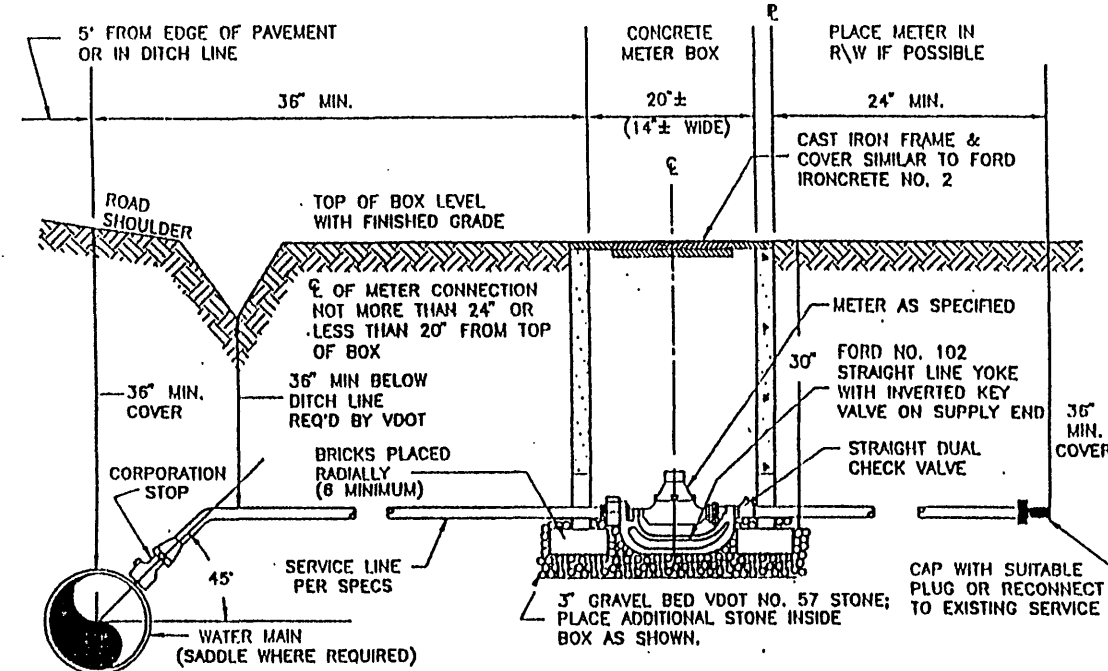
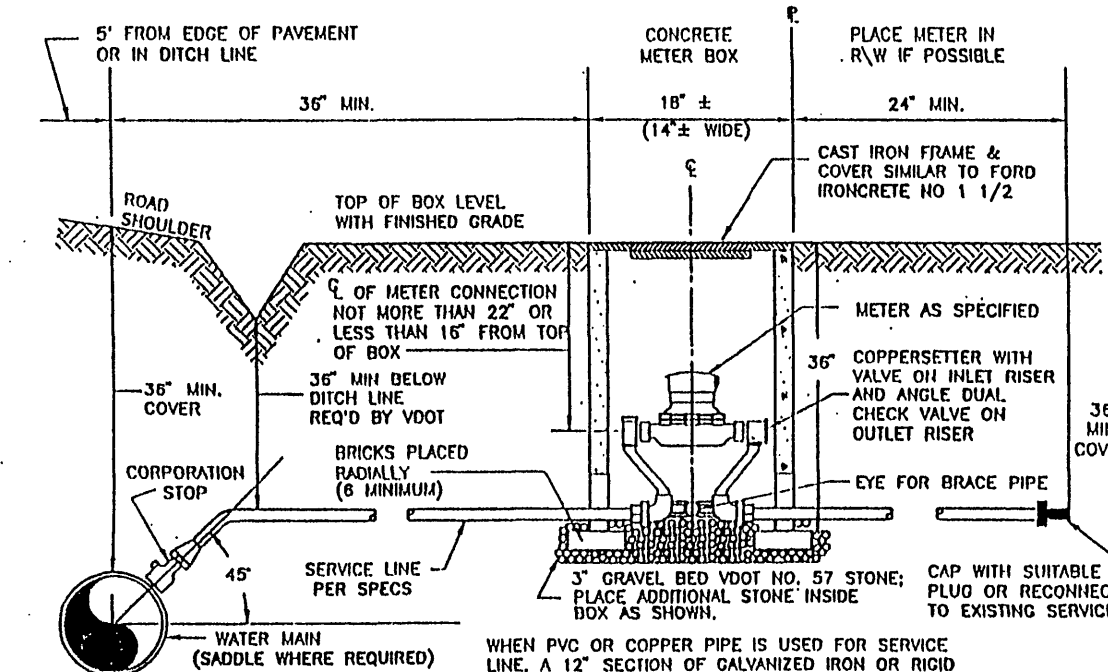


WATER MAIN TRENCH BED

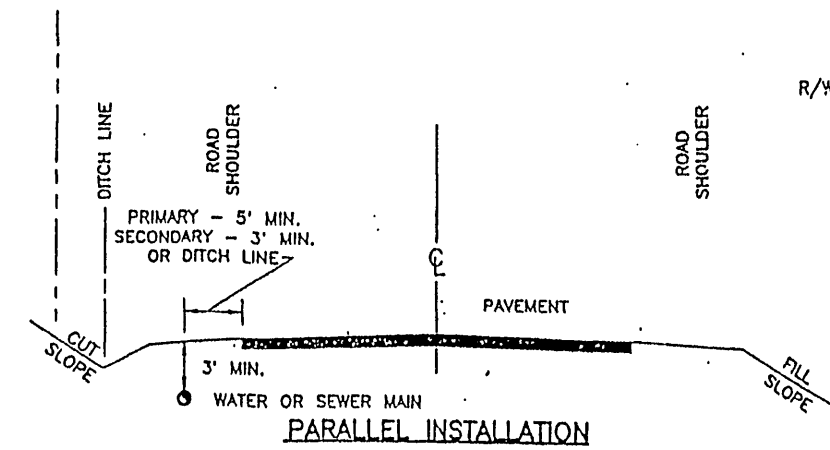


WATER SERVICE CONNECTION TYPE 2

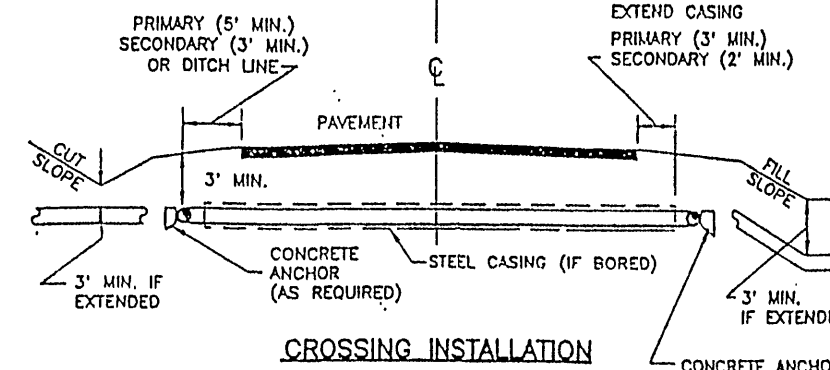


WATER SERVICE CONNECTION TYPE 1

Meters for Franklin County must be:
Model SR11 (3/4" & 1")
Model SR (1 1/2" & 2")
Model SRH Compound (3" & 6")
Note - All meters shall be supplied with touch read equipment and an internal strainer.



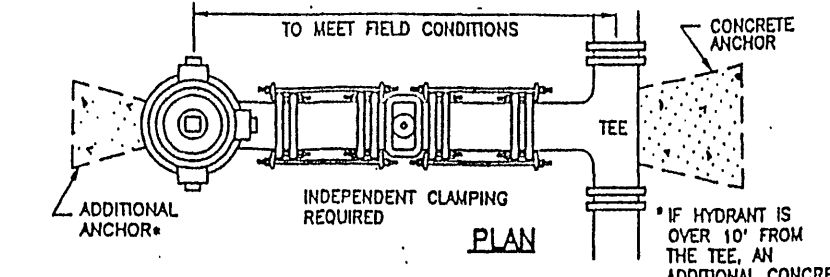
PARALLEL INSTALLATION



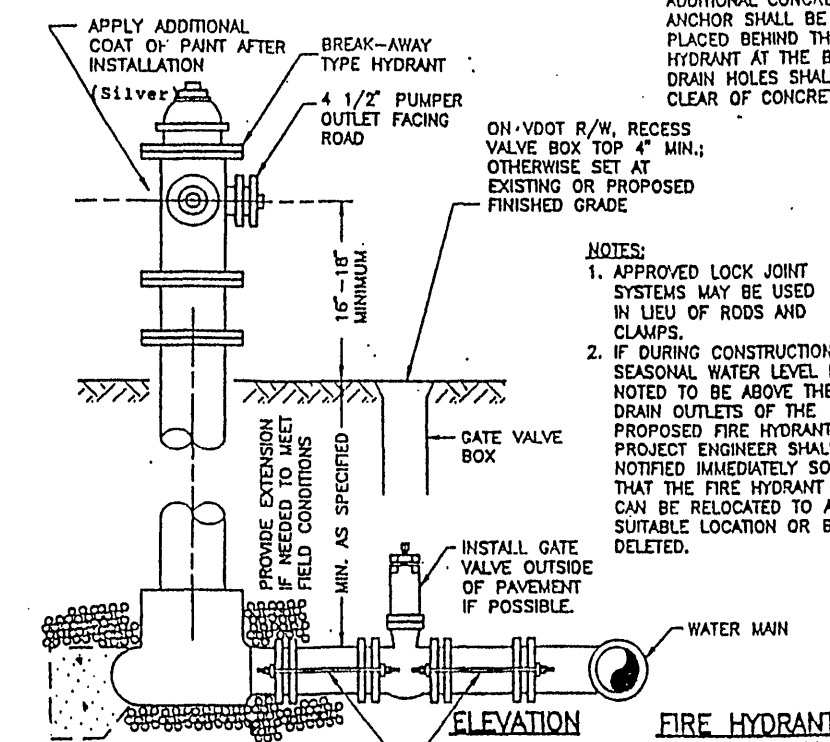
CROSSING INSTALLATION

NOTES:
1. PLACE VALVES AS NOTED ON PLAN.
2. VERIFY LOCAL REQUIREMENTS WITH VDOT RESIDENCY.

TYPICAL WATER OR SEWER MAIN LOCATION WITHIN VDOT RIGHT-OF-WAY



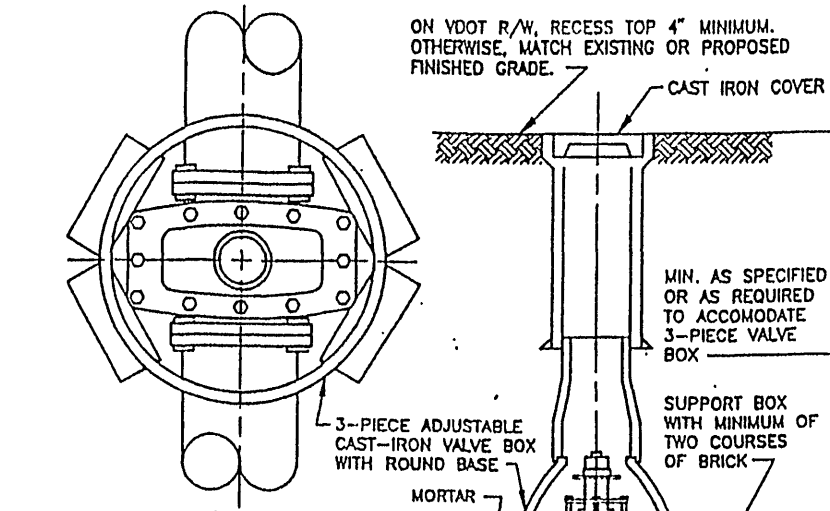
PLAN



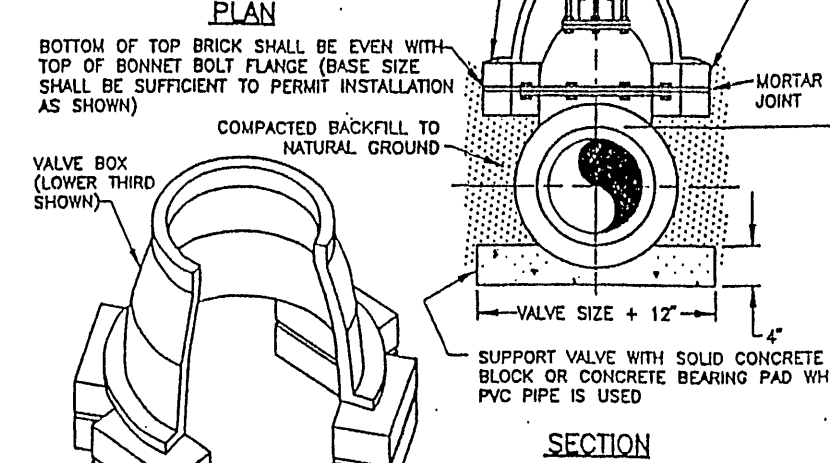
ELEVATION

NOTES:
1. APPROVED LOCK JOINT SYSTEMS MAY BE USED IN LIEU OF ROADS AND CLAMPS.
2. IF DURING CONSTRUCTION THE PROPOSED FIRE HYDRANT IS NOTED TO BE ABOVE THE PROPOSED FINISHED GRADE, THE PROPOSED FIRE HYDRANT SHALL BE NOTIFIED IMMEDIATELY SO THAT THE FIRE HYDRANT CAN BE RELOCATED TO A SUITABLE LOCATION OR BE DELETED.

FIRE HYDRANT INSTALLATION



PLAN



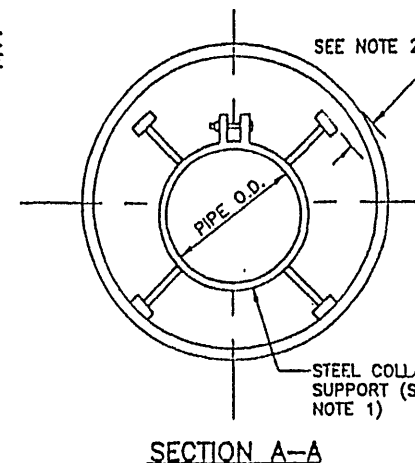
SECTION

NOTES:
1. VALVE AND PIPE QUANTITY FOR CLARITY.
2. VALVE SIZE + 12".
3. SUPPORT VALVE WITH SOLID CONCRETE BLOCK OR CONCRETE BEARING PAD WHEN PVC PIPE IS USED.

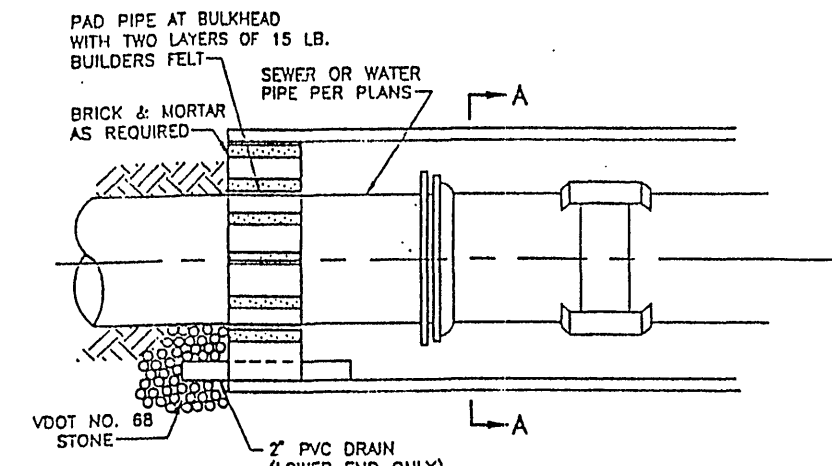
ISOMETRIC VIEW

VALVE BOX INSTALLATION

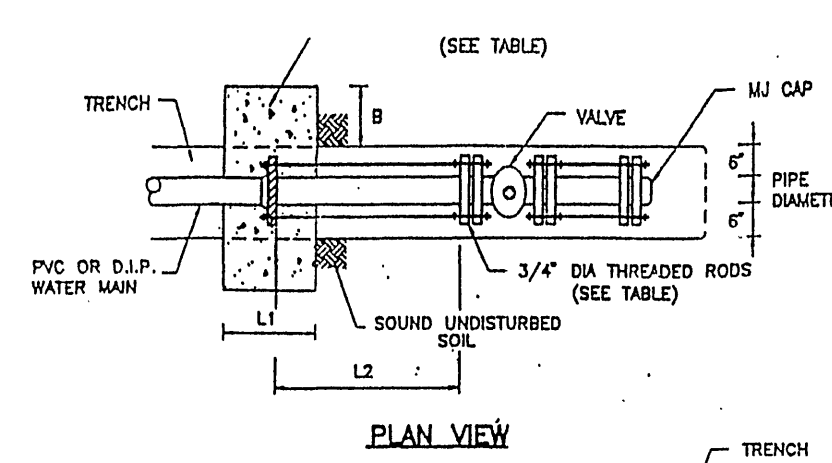
1. SINGLE-PIECE COLLAR SHOWN:
2-PIECE COLLAR USED FOR CARRIER PIPES 16" OR LARGER.
2. DIMENSION AS NECESSARY TO PROVIDE MINIMUM CLEARANCE NEEDED TO SLIDE PIPE THROUGH CASING.
3. THIS STANDARD APPLICABLE FOR 4" DIA. AND LARGER PIPE INSTALLED UNDER PRIMARY AND SECONDARY HIGHWAYS FOR LINES SHALLOWER THAN 4". USE DUCTILE IRON PIPE FOR CASING AND MODIFY INSTALLATION ACCORDINGLY.
4. CORRUGATED METAL PIPE SHALL NOT BE USED AS CASING.



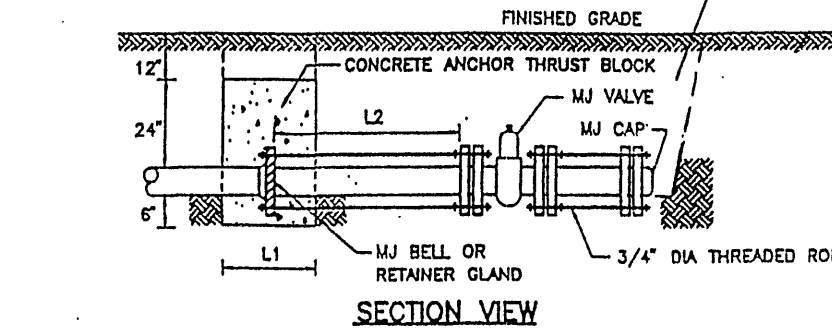
SECTION A-A



SEALING CASING INSTALLATION WITH STEEL COLLAR



PLAN VIEW



SECTION VIEW

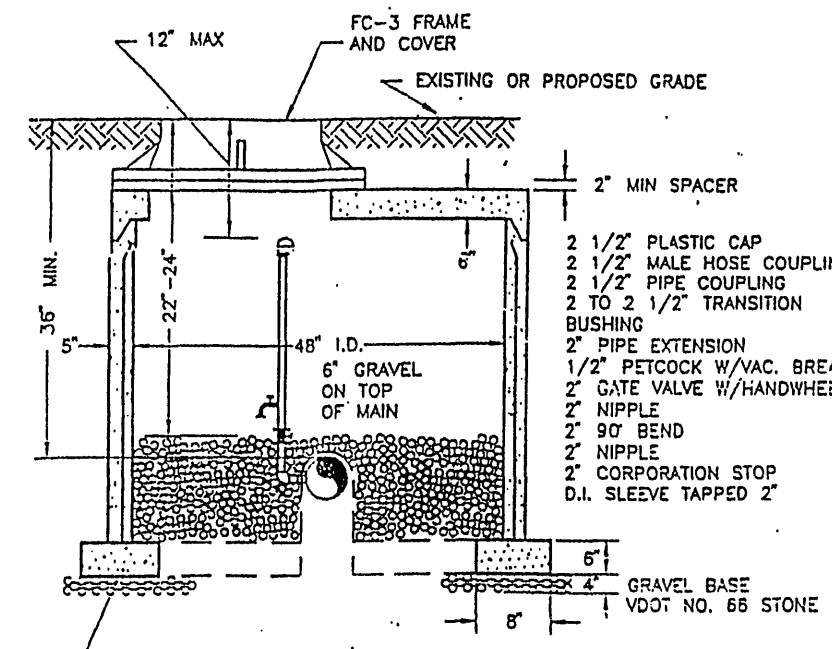
RETAINER GLAND FOR PVC PIPE SHALL BE SERIES 2000 PV, AND FOR DIP PIPE SERIES 100, BY EBAA IRON SALES, INC. "MEGA-LUG" OR APPROVED EQUAL.

PIPE DIAMETER (in)	B min (in)	L1 min (in)	NUMBER OF BOLTS PER RETAINER	L2 min (in)
4-8	12	18	4	27
10-12	27	33	6	50
14-16	44	50	8	75

NOTE: FOR USE WITH TEST OR WORKING PRESSURES LESS THAN 200 PSI

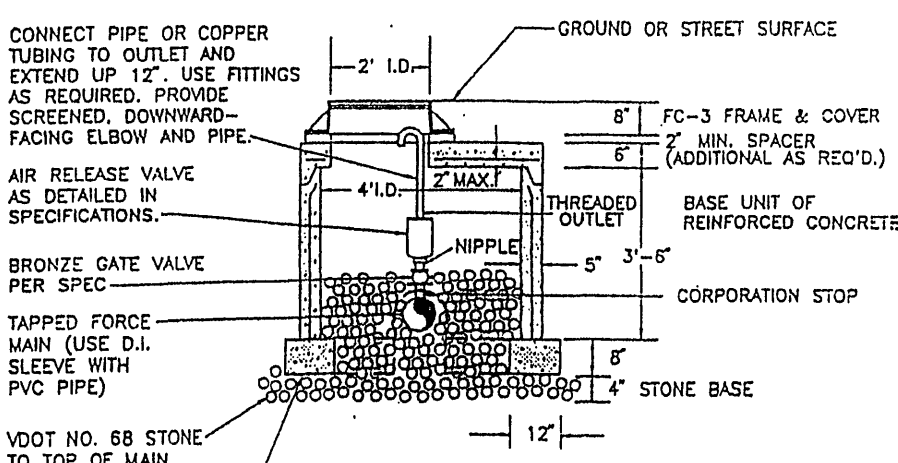
WATERLINE BULKHEAD ANCHOR DETAIL

1. WHERE NOTED ON PLANS USE STANDARD METER BOX AS CHAMBER AND SUPPORT WITH TWO (2) COURSES OF BRICK WITH MORTAR.
2. USE TEFLON TAPE ON ALL PIPE JOINTS, CAP AND PETCOCK.

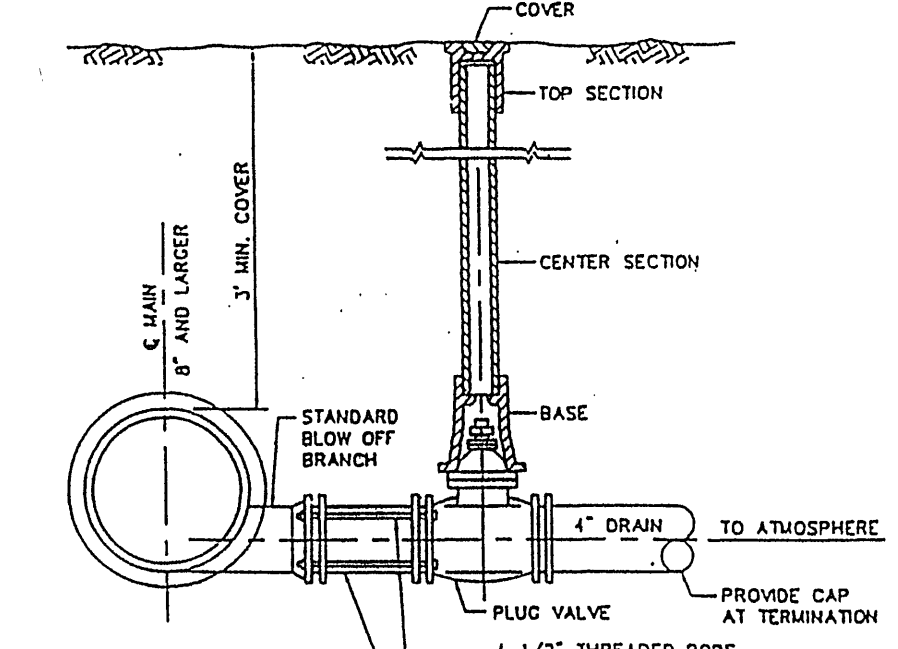


BLOW-OFF CHAMBER

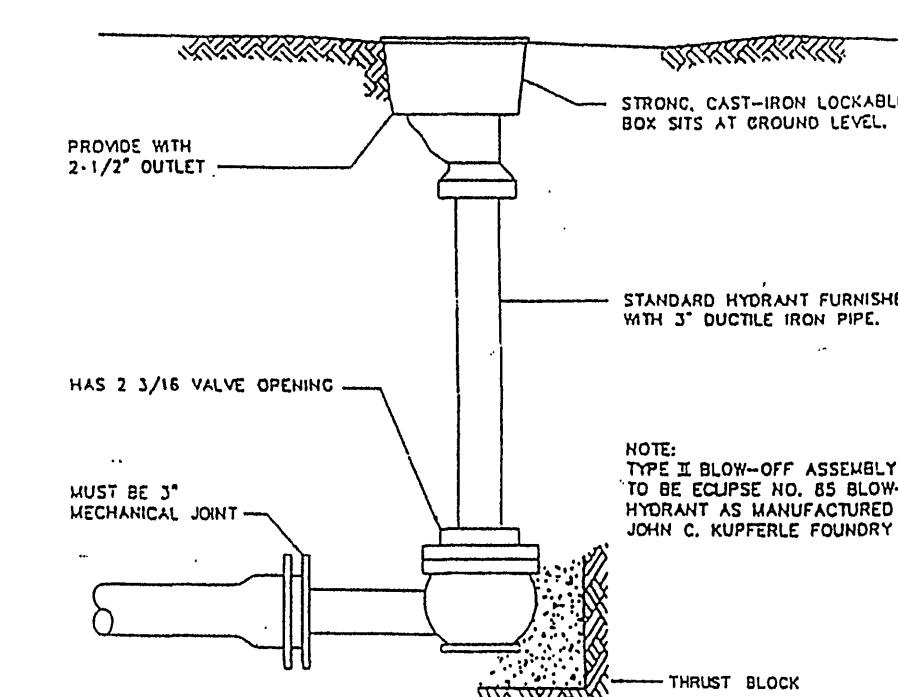
NOTE: MATERIALS AND FABRICATION IN ACCORDANCE WITH MH-1 MANHOLE. SIZE OF AIR RELEASE VALVE AND SIZE OF GATE VALVE AS SPECIFIED, WHERE NOTED ON PLANS, USE STANDARD METER BOX AS CHAMBER AND SUPPORT WITH TWO (2) COURSES OF BRICK.



PRECAST CHAMBER FOR AIR RELEASE VALVE



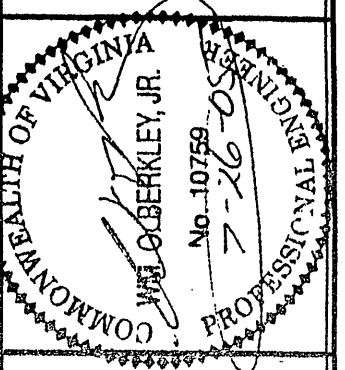
BLOW-OFF ASSEMBLY TYPE I



LINE TERMINATION AND BLOWOFF ASSEMBLY

AS BUILT
7-26-05

BERKLEY HOWELL & ASSOC., P.C.
ENGINEERS • SURVEYORS • PLANNERS
306 ENTERPRISE DRIVE, SUITE C
FOREST, VIRGINIA 24551
PH: (434) 385-7548 FAX: (434) 385-6178



WESTLAKE VILLAGE
BUSINESS PARK
PHASE I
WATER SYSTEM
GILLS CREEK DISTRICT FRANKLIN CO., VA.

MISC. DETAILS

DATE: 7-15-04

TECHNICIAN:

CHECKED BY:

REVISIONS

NO. DATE

SCALES AS SHOWN

PROJ. NO. 030066 DIV.

SHEET NO. 6 OF 6

DRAWING NO.

SURVEY DATUM USED:

FIELDBOOK IDENTIFICATION:

VIEWS TO CREATE THIS DRAWING:

MANUSCRIPT DRAWING NUMBER: