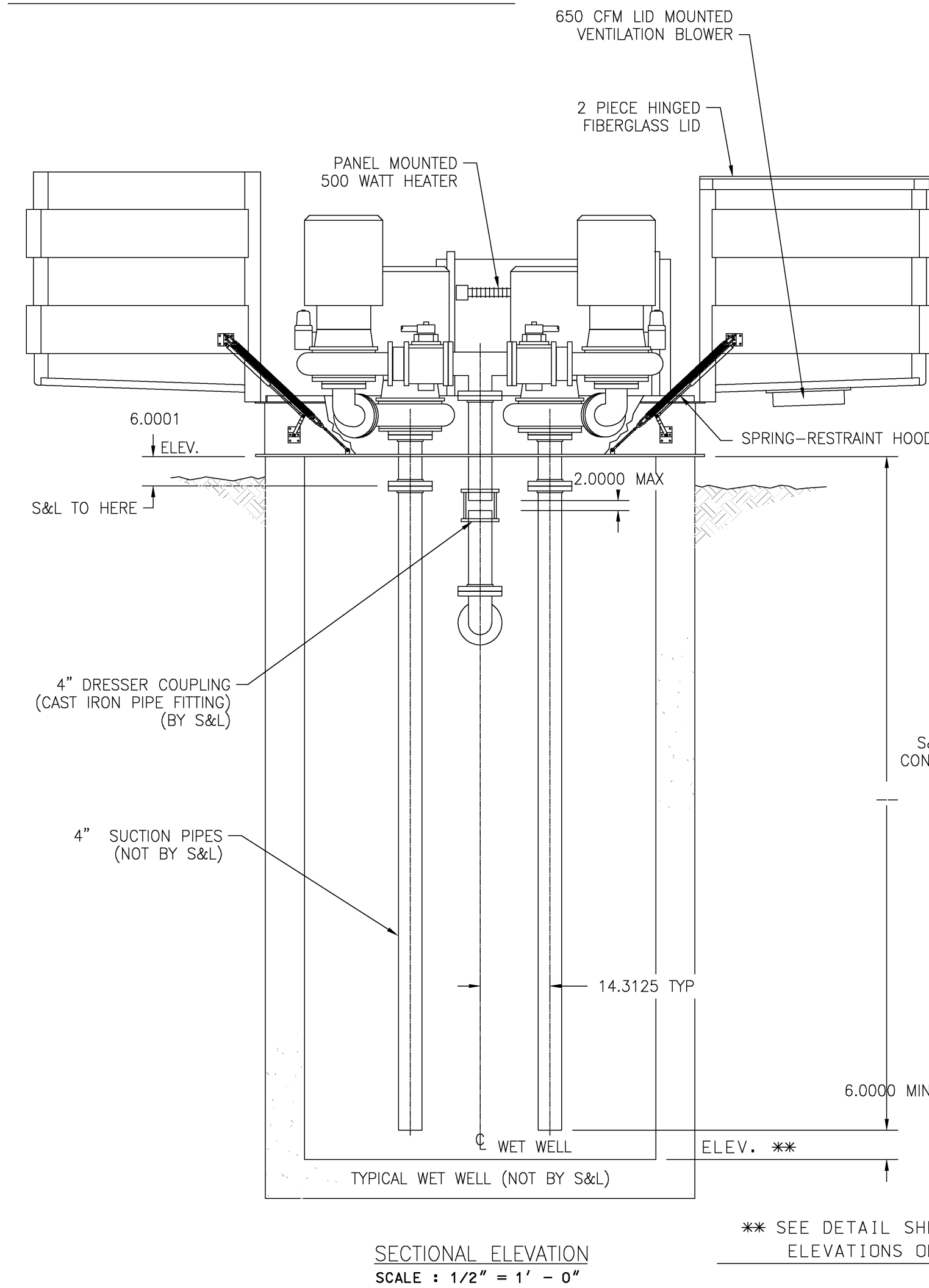
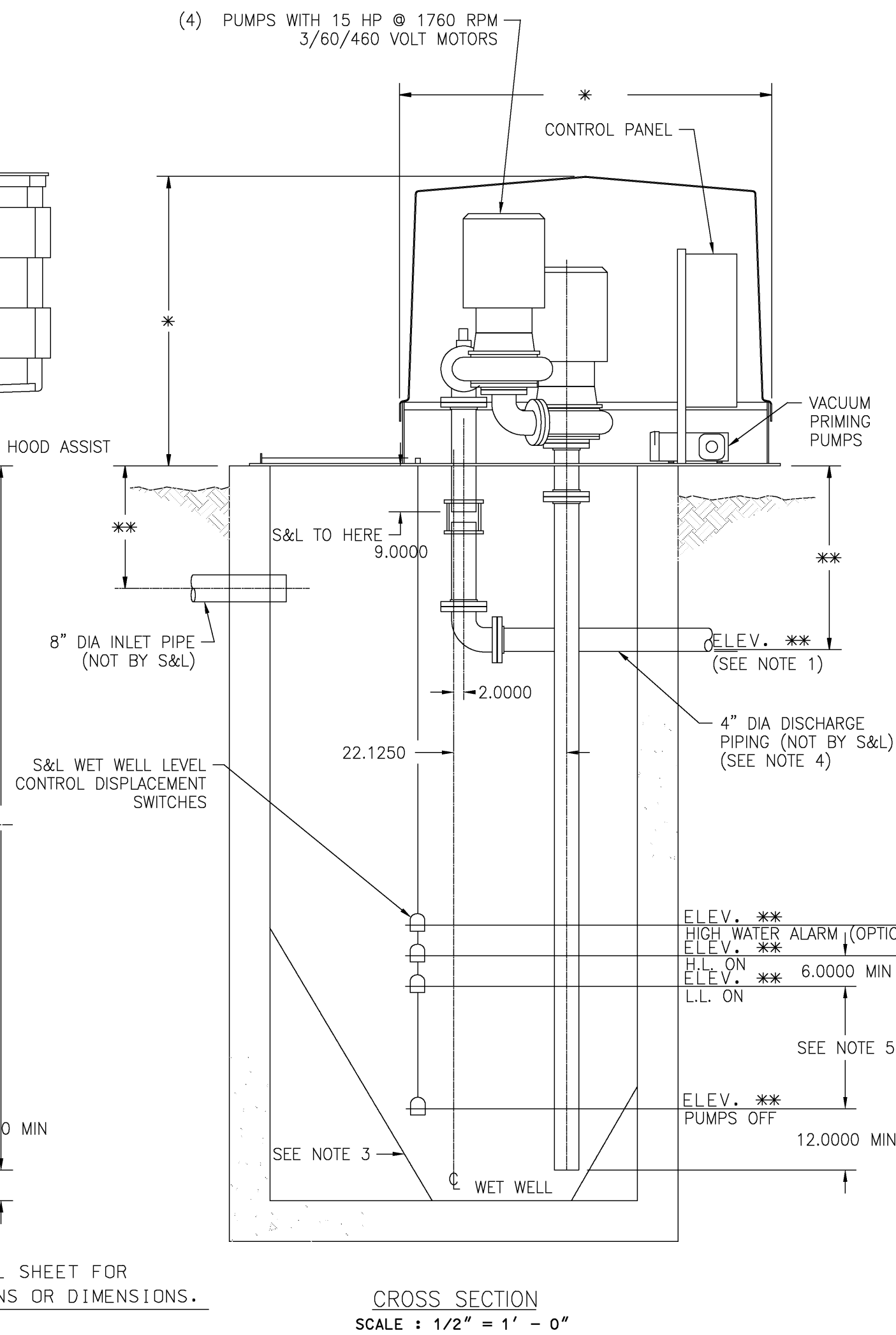


\* REVISE DIMENSION AS NECESSARY  
TO ADJUST FOR 96" DIA. (I.D.) WET WELL

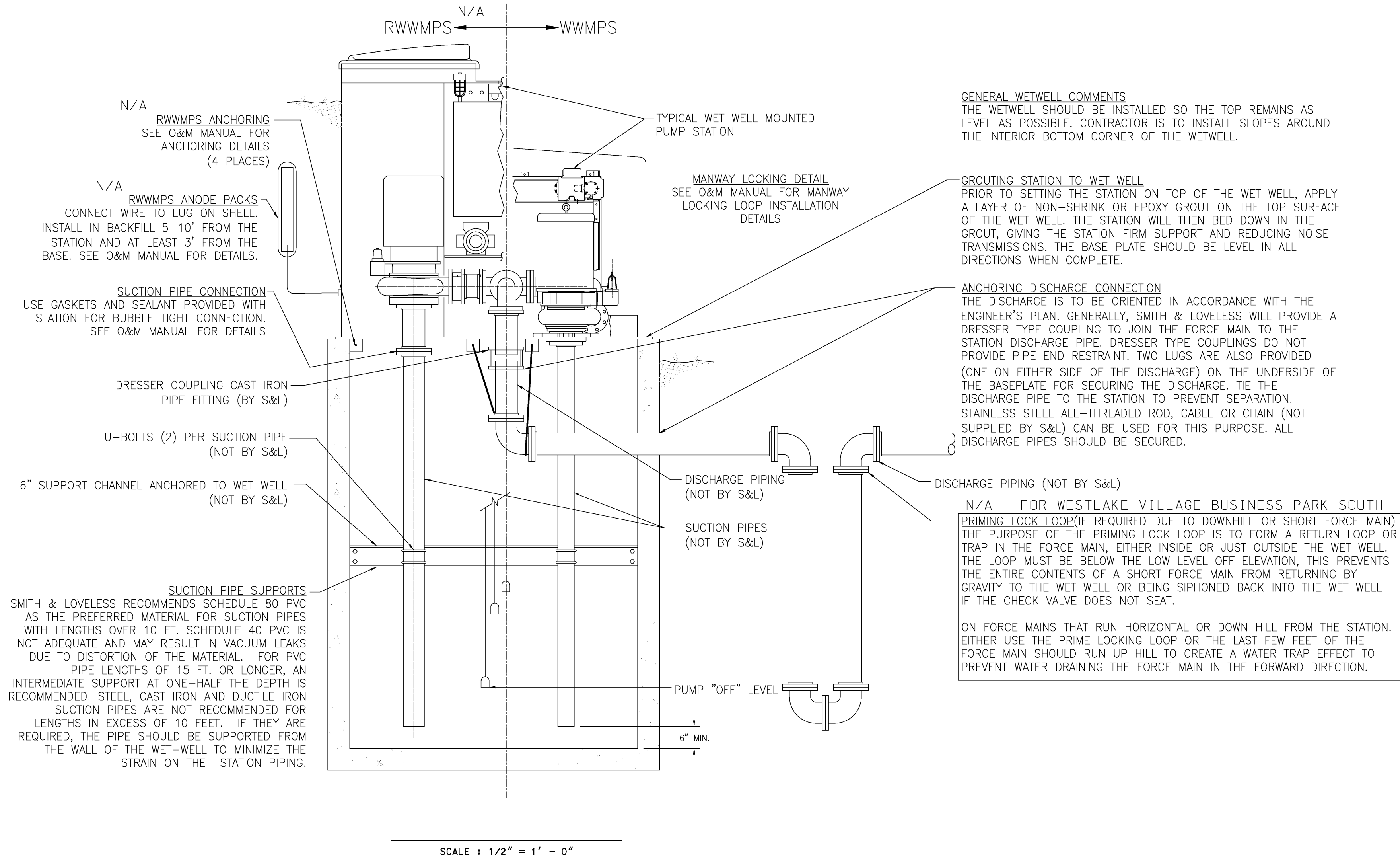


\*\* SEE DETAIL SHEET FOR  
ELEVATIONS OR DIMENSIONS.



\*\* SEE DETAIL SHEET FOR  
ELEVATIONS OR DIMENSIONS.

## INSTALLATION DETAILS



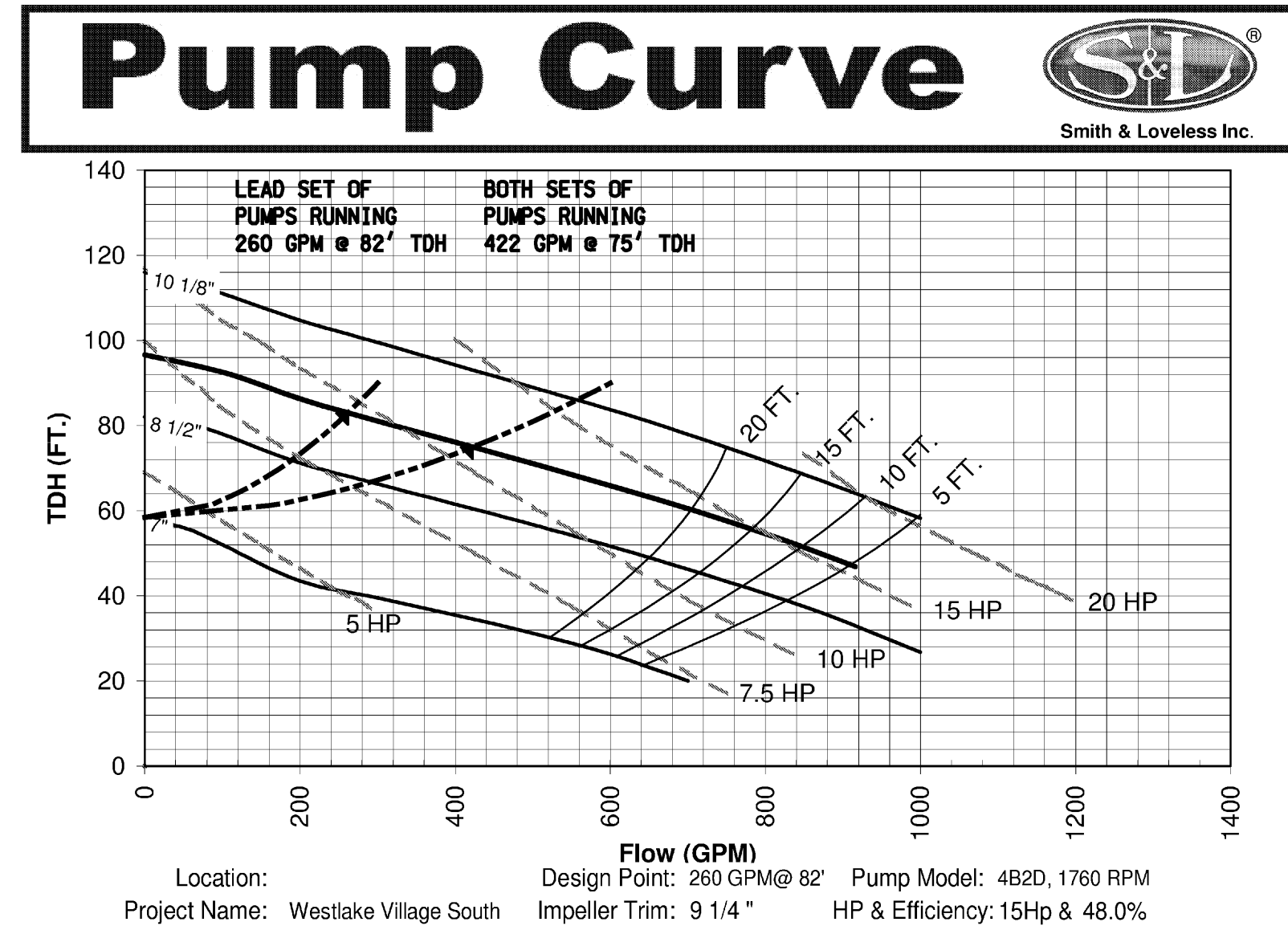
GENERAL WETWELL COMMENTS  
THE WETWELL SHOULD BE INSTALLED SO THE TOP REMAINS AS LEVEL AS POSSIBLE. CONTRACTOR IS TO INSTALL SLOPES AROUND THE INTERIOR BOTTOM CORNER OF THE WETWELL.

GROUTING STATION TO WET WELL  
PRIOR TO SETTING THE STATION ON TOP OF THE WET WELL, APPLY A LAYER OF NON-SHRINK OR EPOXY GROUT ON THE TOP SURFACE OF THE WET WELL. THE STATION WILL THEN BED DOWN IN THE GROUT, GIVING THE STATION FIRM SUPPORT AND REDUCING NOISE TRANSMISSIONS. THE BASE PLATE SHOULD BE LEVEL IN ALL DIRECTIONS WHEN COMPLETE.

ANCHORING DISCHARGE CONNECTION  
THE DISCHARGE IS TO BE ORIENTED IN ACCORDANCE WITH THE ENGINEER'S PLAN. GENERALLY, SMITH & LOVELESS WILL PROVIDE A DRESSER TYPE COUPLING TO JOIN THE FORCE MAIN TO THE STATION DISCHARGE PIPE. DRESSER TYPE COUPLINGS DO NOT PROVIDE PIPE END RESTRAINT. TWO LUGS ARE ALSO PROVIDED (ONE ON EITHER SIDE OF THE DISCHARGE) ON THE UNDERSIDE OF THE BASEPLATE FOR SECURING THE DISCHARGE. TIE THE DISCHARGE PIPE TO THE STATION TO PREVENT SEPARATION. STAINLESS STEEL ALL-THREADED ROD, CABLE OR CHAIN (NOT SUPPLIED BY S&L) CAN BE USED FOR THIS PURPOSE. ALL DISCHARGE PIPES SHOULD BE SECURED.

N/A - FOR WESTLAKE VILLAGE BUSINESS PARK SOUTH  
PRIMING LOCK LOOP (IF REQUIRED DUE TO DOWNHILL OR SHORT FORCE MAIN) THE PURPOSE OF THE PRIMING LOCK LOOP IS TO FORM A RETURN LOOP OR TRAP IN THE FORCE MAIN, EITHER INSIDE OR JUST OUTSIDE THE WET WELL. THE LOOP MUST BE BELOW THE LOW LEVEL OFF ELEVATION, THIS PREVENTS THE ENTIRE CONTENTS OF A SHORT FORCE MAIN FROM RETURNING BY GRAVITY TO THE WET WELL OR BEING SIPHONED BACK INTO THE WET WELL IF THE CHECK VALVE DOES NOT SEAT.

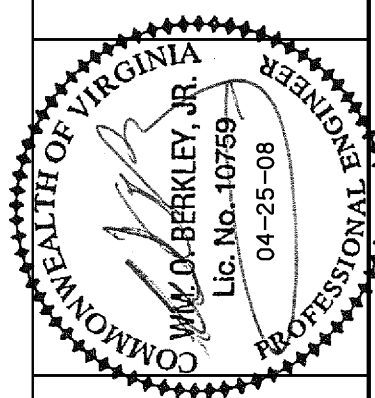
ON FORCE MAINS THAT RUN HORIZONTAL OR DOWN HILL FROM THE STATION. EITHER USE THE PRIME LOCKING LOOP OR THE LAST FEW FEET OF THE FORCE MAIN SHOULD RUN UP HILL TO CREATE A WATER TRAP EFFECT TO PREVENT WATER DRAINING THE FORCE MAIN IN THE FORWARD DIRECTION.



- NOTES:
1. IF END OF DISCHARGE LINE IS BELOW ELEVATION OF DISCHARGE LINE AT POINT OF LEAVING WET WELL A PRIMING LOCK LOOP MAY BE REQUIRED, CONSULT FACTORY.
  2. IF DISCHARGE LINE IS LESS THAN 200 FEET IN LENGTH, AN ADDITIONAL CHECK VALVE OR PRIMING LOCK LOOP MAY BE REQUIRED, CONSULT FACTORY.
  3. PROVIDE 60' SLOPE IN WET WELL, AS REQUIRED.(SEE DETAIL SHEET)
  4. DISCHARGE PIPING ARRANGEMENTS BELOW THE BASE PLATE WILL VARY AND MAY NOT BE SHOWN ACCORDING TO CUSTOMER'S SPECIFICATIONS.
  5. VOLUME IN GALLONS BETWEEN LL ON AND LL OFF SHOULD BE EQUAL TO OR GREATER THAN THE PUMPING RATE IN GPM.
  6. COPYRIGHT (C) 2007 SMITH & LOVELESS, INC. ; PUMP STATION DETAILS SHOWN ON THIS SHEET WITH PERMISSION FROM SMITH & LOVELESS, INC.

LEGEND  
N/A NOT APPLICABLE

**BERKLEY HOWELL & ASSOC., P.C.**  
ENGINEERS • SURVEYORS • PLANNERS  
306 ENTERPRISE DRIVE, SUITE C  
FREDERICKSBURG, VIRGINIA 22451  
PHONE: (434) 385-7548 FAX: (434) 385-6178



**WESTLAKE VILLAGE  
BUSINESS PARK SOUTH  
SEWERAGE FACILITIES**  
FRANKLIN CO., VA.  
GILLS CREEK DISTRICT

SEWAGE PUMP STATION  
ABOVE GROUND SUCTION LIFT  
GENERAL SPECIFICATIONS AND DETAILS

DATE:	01-10-08
DRAWN:	
CHECKED:	
REVISIONS	
NO.	DATE
1	03-04-08
2	03-31-08
3	04-14-08
4	04-25-08

SCALES  
HORIZ: AS SHOWN  
VERT: AS SHOWN  
COMM. NO.  
030066  
SHEET NO.  
10 OF 19