

**EROSION CONTROL AND LANDSCAPING:**

Care must be taken during construction to prevent erosion, dust and mud from damaging adjacent property, clogging ditches, tracking public streets and otherwise creating a public or private nuisance to surrounding areas.

The entire construction area back of curbs and/or pavement to be backfilled and seeded together with ditches and channels at the earliest possible time after final grading.

Drainage easements must be defined by excavated ditches or channels for their full length to well defined existing natural watercourses.

This road will be reviewed during construction for the need of paved gutters. If erosion is encountered in any drainage easement, it will be the responsibility of the developer to sod, riprap, grout, pave, or do whatever is necessary to correct the problem.

All vegetation and overburden to be removed from shoulder to shoulder prior to the conditioning (cutting and/or preparation) of the subgrade.

**QUALITY CONTROL:**

Streets to be graded, paved and all structural components erected in accordance with the most current Virginia Department of Transportation Road and Bridge Specifications and Road Design Standards. All materials used shall be tested in accordance with standard policies. The developer must contact VDOT prior to beginning any construction at which time an Inspection and Testing Procedure Policy will be drawn. The developer will produce test reports from approved independent laboratories at the developer's expense.

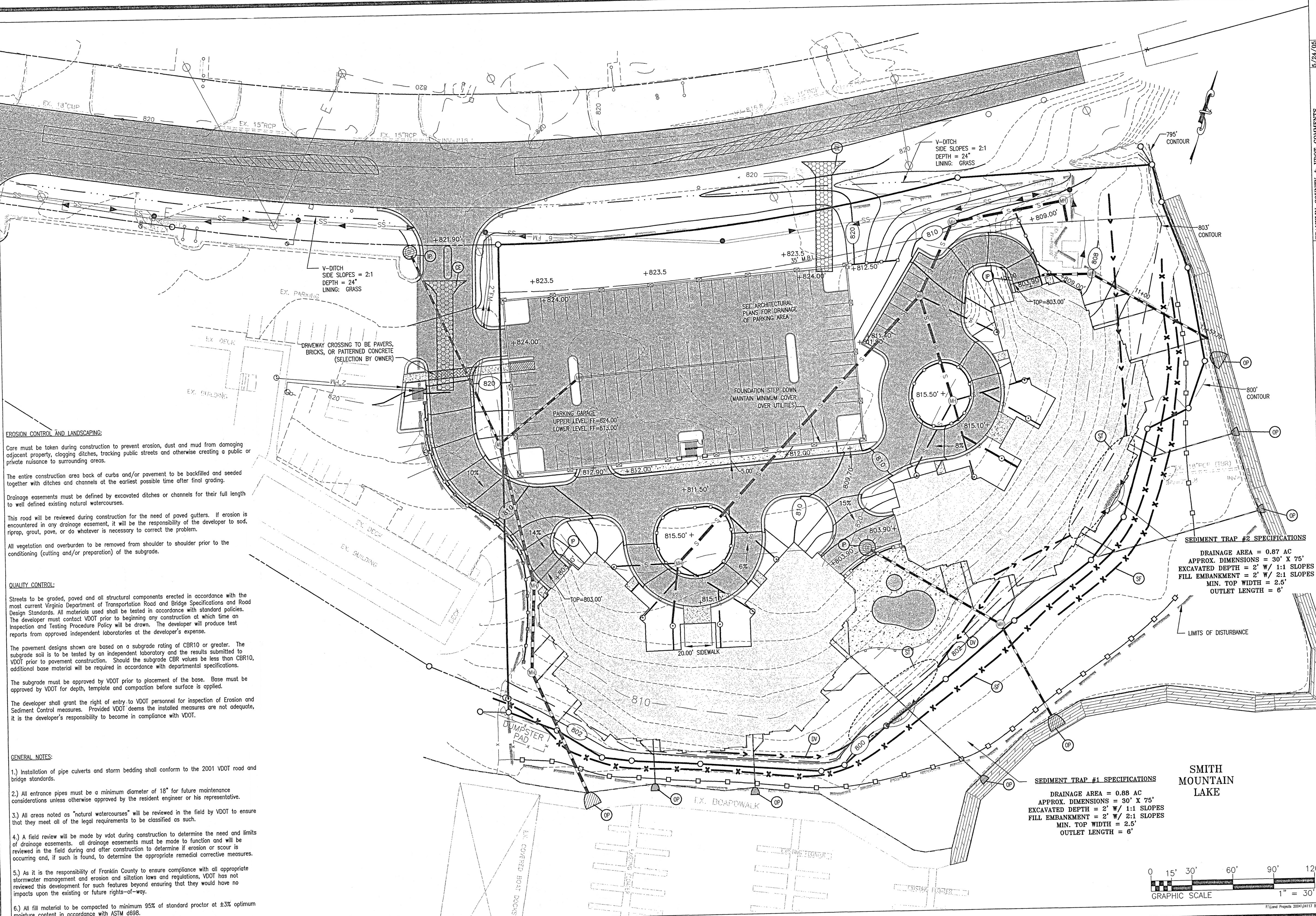
The pavement designs shown are based on a subgrade rating of CBR10 or greater. The subgrade soil is to be tested by an independent laboratory and the results submitted to VDOT prior to pavement construction. Should the subgrade CBR values be less than CBR10, additional base material will be required in accordance with departmental specifications.

The subgrade must be approved by VDOT prior to placement of the base. Base must be approved by VDOT for depth, template and compaction before surface is applied.

The developer shall grant the right of entry to VDOT personnel for inspection of Erosion and Sediment Control measures. Provided VDOT deems the installed measures are not adequate, it is the developer's responsibility to become in compliance with VDOT.

**GENERAL NOTES:**

- 1.) Installation of pipe culverts and storm bedding shall conform to the 2001 VDOT road and bridge standards.
- 2.) All entrance pipes must be a minimum diameter of 18" for future maintenance considerations unless otherwise approved by the resident engineer or his representative.
- 3.) All areas noted as "natural watercourses" will be reviewed in the field by VDOT to ensure that they meet all of the legal requirements to be classified as such.
- 4.) A field review will be made by vdot during construction to determine the need and limits of drainage easements. All drainage easements must be made to function and will be reviewed in the field during and after construction to determine if erosion or scour is occurring and, if such is found, to determine the appropriate remedial corrective measures.
- 5.) As it is the responsibility of Franklin County to ensure compliance with all appropriate stormwater management and erosion and siltation laws and regulations, VDOT has not reviewed this development for such features beyond ensuring that they would have no impacts upon the existing or future rights-of-way.
- 6.) All fill material to be compacted to minimum 95% of standard proctor at  $\pm 3\%$  optimum moisture content in accordance with ASTM d698.



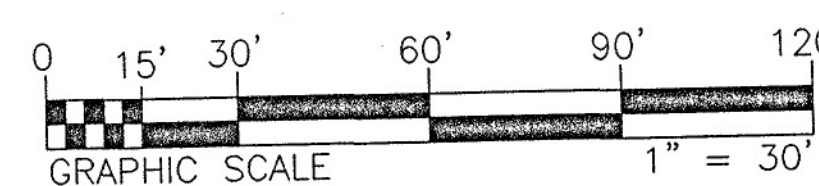
REVISIONS	DATE	DESCRIPTION	APPROVAL
FRANKLIN COUNTY COMMENTS	5/24/05		
FRANKLIN COUNTY COMMENTS	6/29/05		
FRANKLIN COUNTY COMMENTS	7/20/05		

Stone Engineering  
250 S. Main Street  
Rocky Mount, Virginia 24151  
(540) 483-0078

DESIGN: MEP  
DRAFT: MEP  
CHECK: RDS

**GRADING & EROSION CONTROL PLAN  
FOR BRIDGEWATER POINTE  
LOCATED ON SMITH MOUNTAIN LAKE  
GILLS CREEK MAGISTERIAL DISTRICT  
FRANKLIN COUNTY, VIRGINIA**

DATE: 3/17/05  
SCALE: 1" = 30'  
SHEET 3 OF 10  
PROJECT NO. 04117



F:\Land Projects 2004\04117 BRIDGEWATER POINTE.dwg(04117 SITE PLAN.mxd)