

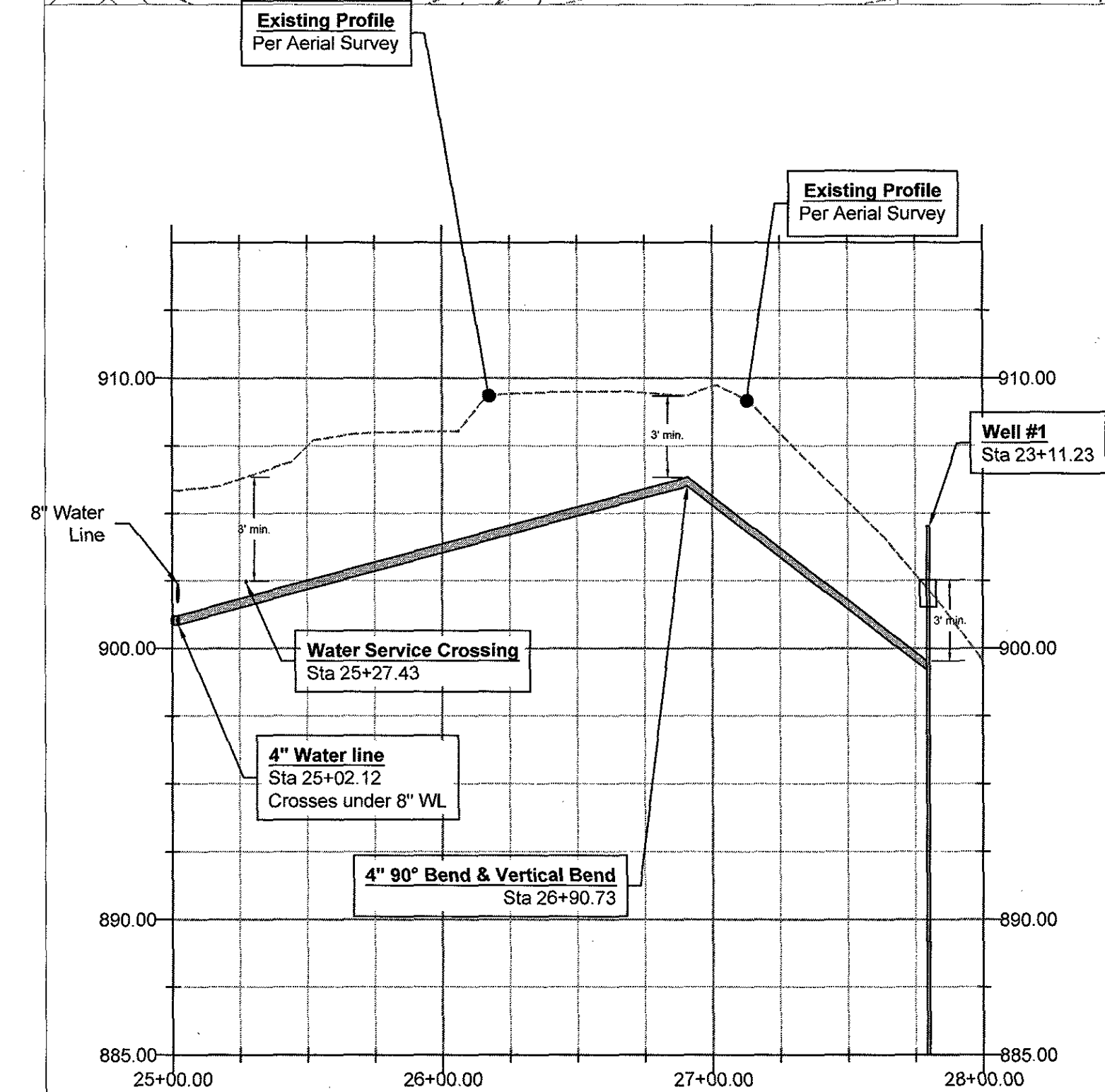
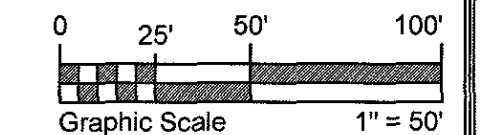
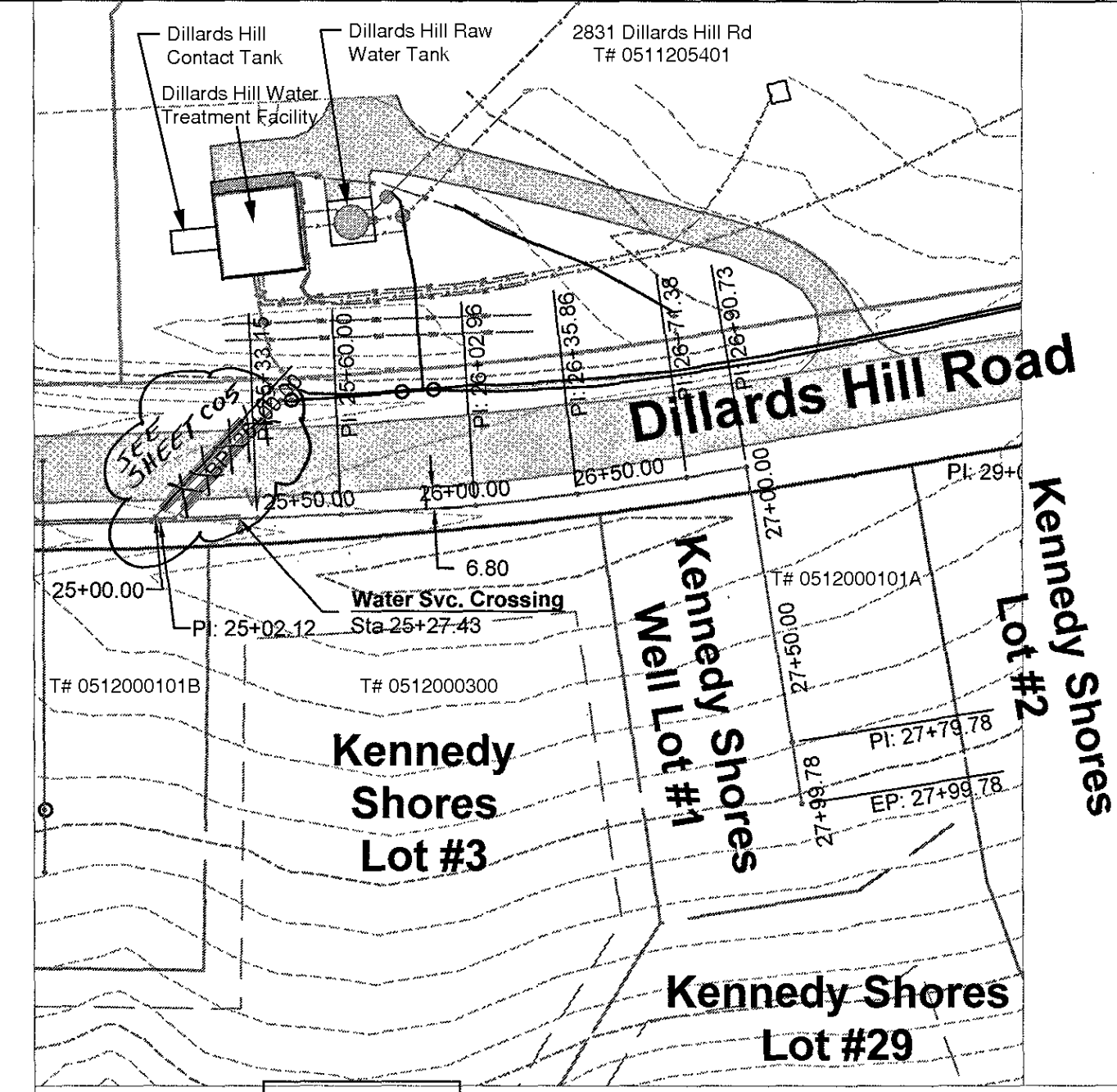
4" C-900 Water Line

#### PDG NOTES

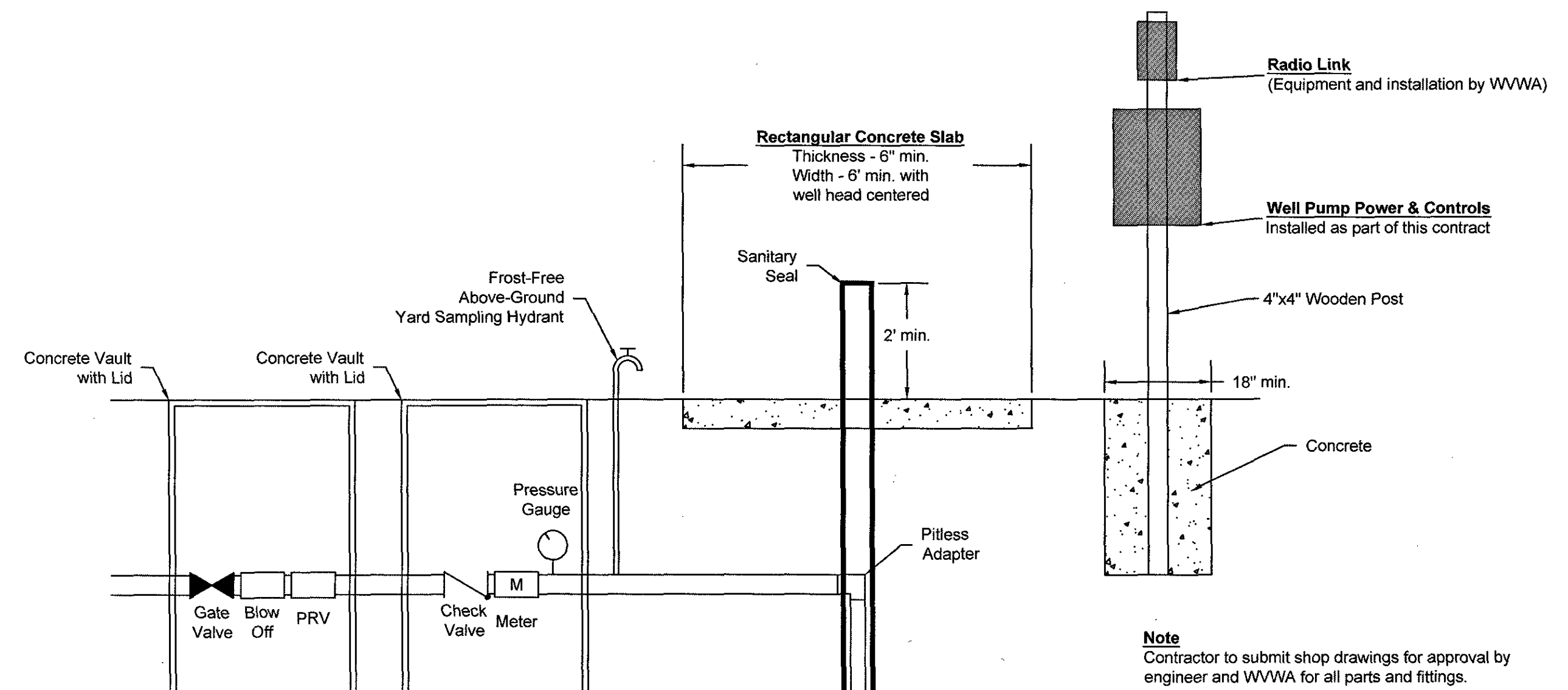
- COMM: will use radio link to control well pumps and for meters readings (by WVWA)
- PWR: will by separate for each well (by Contractor).  
Post for mounting to be coordinated with WVWA (wireless & power).  
Pitless adapter, then frost-free sample tap, then meter, then pop-off valve (no shed).

#### General Notes

- Work Zone**
  - Any disturbance to existing ditch lines, signs, mailboxes, landscaping, drives, etc. will be restored to original conditions.
  - The Contractor is responsible for material storage, management of stockpiles, disposal of excess, import of fill, etc.
- Existing Utilities**
  - All utility crossings shall be potholed ahead of construction to verify crossing elevations, sizes and materials.
  - ANY connection or changes to the existing WVWA system REQUIRES the Contractor to coordinate with WVWA before planning the work.
- Vertical Depth and Crossings**
  - Minimum cover on all water lines shall be 3 ft.
  - All utility crossings shall have 18" minimum vertical separation between the outside of the utilities, or Contractor shall utilize WVWA Standard Detail G-8 Concrete Pier detail.
- Horizontal Location**
  - Water main shall be installed at the designated horizontal location shown on the Plan Sheet.
  - Waterlines installed in parallel with be installed at the same bottom of trench elevation, see detail on Plan Sheet.
  - Pipe deflections of less than 3" are not noted on the Plans. This is assumed to be within the pipe deflection joint limits.
- Water Lines**
  - All pipe in trenches to be PVC C900 DR14.
- Bored Connection Piping** (See WVWA G-06 & VDOT EP-1)
  - 8" Water Line Bore**
    - Casing Pipe - 16" nominal diameter steel (see EP-1)
    - Carrier Pipe - 8" nominal diameter ductile iron (see G-06)
  - 4" Water Line Bore**
    - Casing Pipe - 12" nominal diameter steel (see EP-1)
    - Carrier Pipe - 4" nominal diameter ductile iron (see G-06)
  - Other materials and requirements detailed on WVWA Standard Detail G-06 and VDOT Detail EP-1
- Water Line Joints**
  - Restrained joints will be used at all fittings and changes in pipe directions, see WVWA Standard Detail W-19 "Minimum Thrust Restraint of Pipe Joints Design Lengths"
  - Contractor to be aware that all horizontal and/or vertical bend fitting may not be shown on the Plans.
- Water Valves**
  - All 4" and smaller valves accessed by screw type boxes (b-box).
  - All 8" and larger valves accessed by valve vaults.
  - Valve make and model to be coordinated by Contractor with WVWA.
- Tracer Wire and Access Boxes**
  - Tracer wire and access boxes are required. Location to be coordinated by Contractor with WVWA before burying of any utilities.

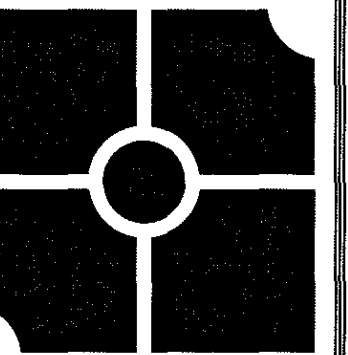


4" C-900 Water Line



Typical Well-Head Installation

(n.l.s.)



**parker**  
DESIGN GROUP

2122 Carolina Ave, SW  
Roanoke, VA 24014  
Ph: 540-387-1153  
Fax: 540-389-5767  
1915-B W. Cary Street  
Richmond, VA 23220  
Phone: 804-358-2947  
Fax: 804-359-9645  
www.parkerdg.com

These documents are the property of Parker Design Group (PDG) and may not be reproduced or used without the express permission of PDG. Any reuse of these documents without authorization of PDG will be at the sole risk of the individual or entity utilizing said documents.

**Dillard's Hill Road Peninsula  
Water Supply & Distribution System**  
Dillard's Hill Road & Belle Isle Drive  
Franklin County, Virginia

#### REVISIONS:

01 - Rev. Scale on Enlargement C06  
01 - date Aug 23, 2017

DESIGNED BY: CDS

DRAWN BY: CDS

CHECKED BY: SRB

DATE:  
August 10, 2017

SHEET TITLE:  
**Well  
Connections**  
SCALE:

SHEET NO.

**C06**