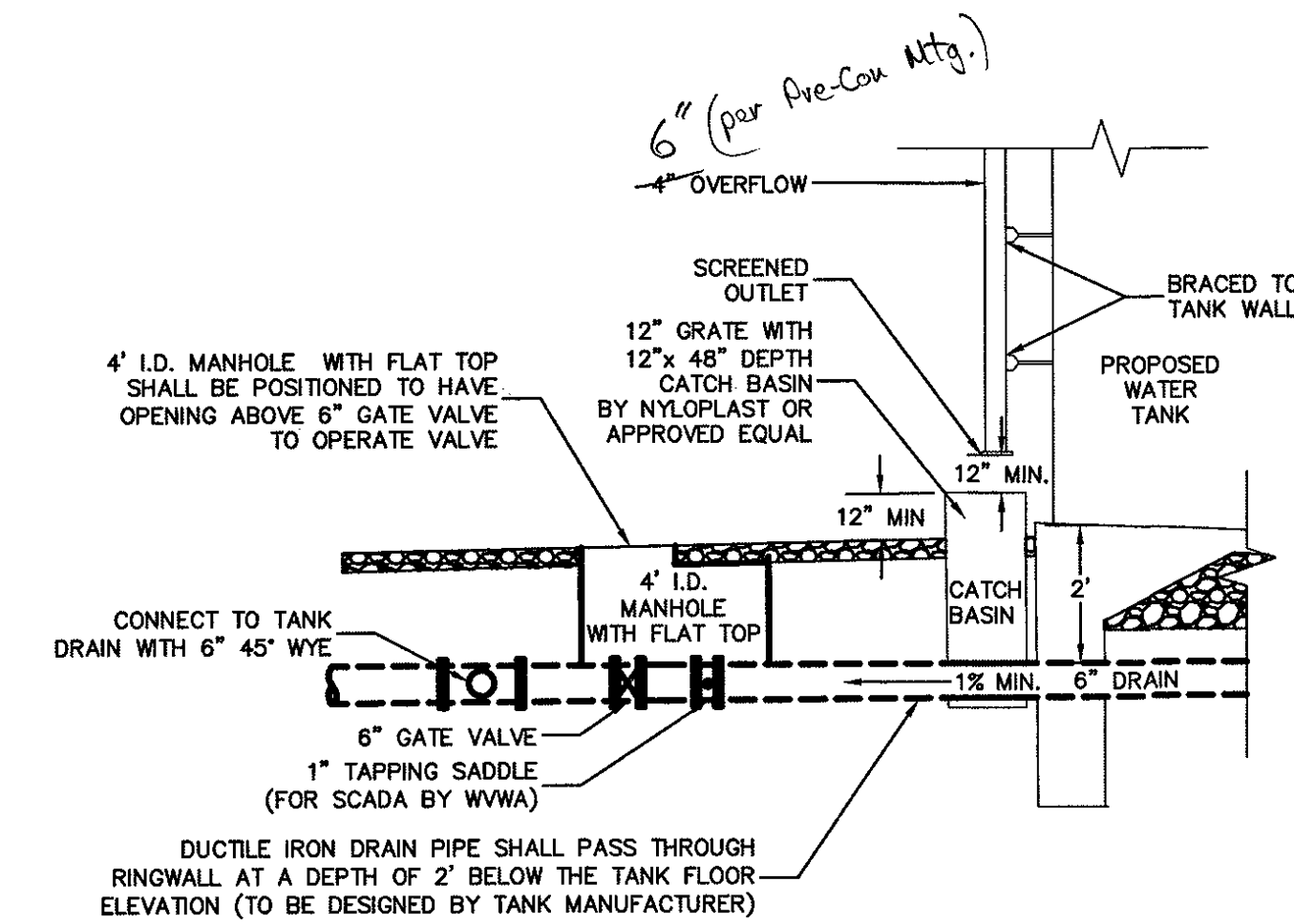
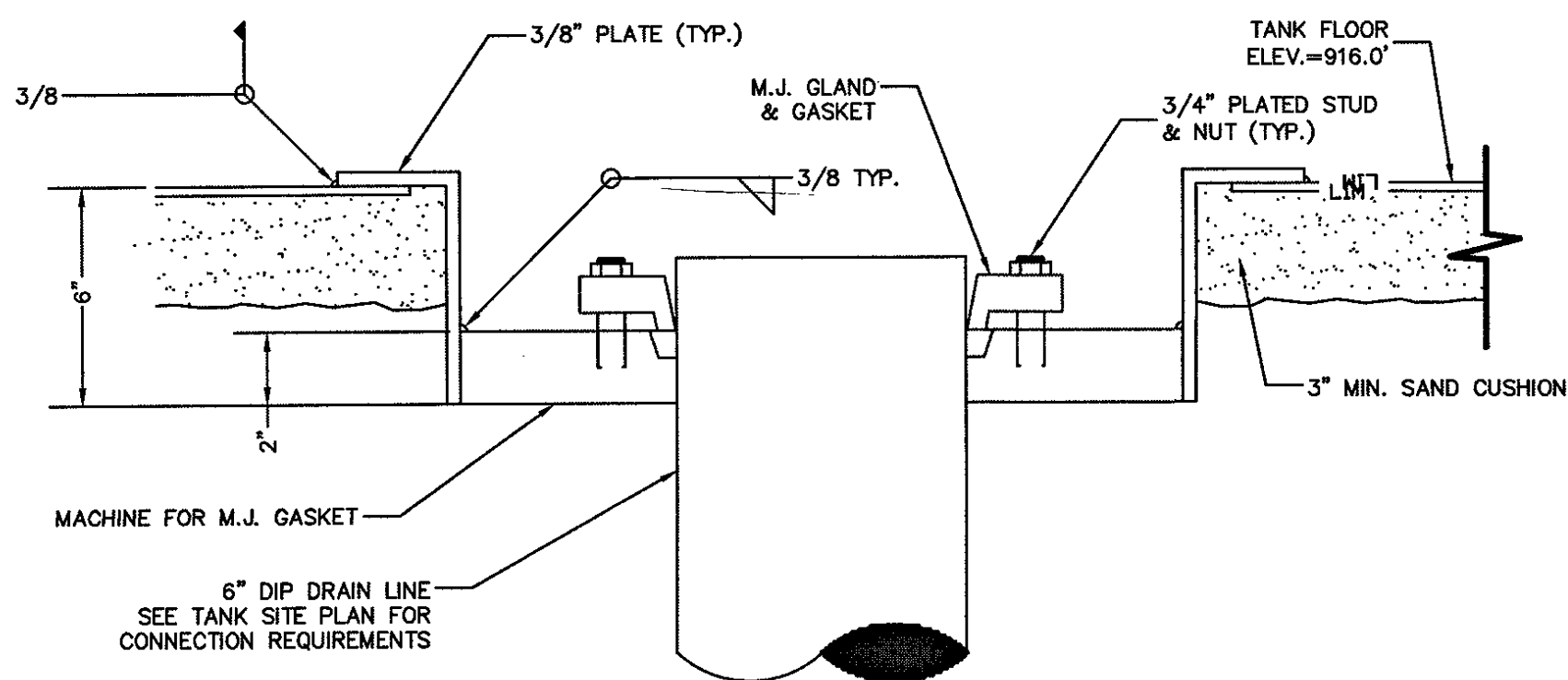


WELDED STEEL FOUNDATION DETAIL

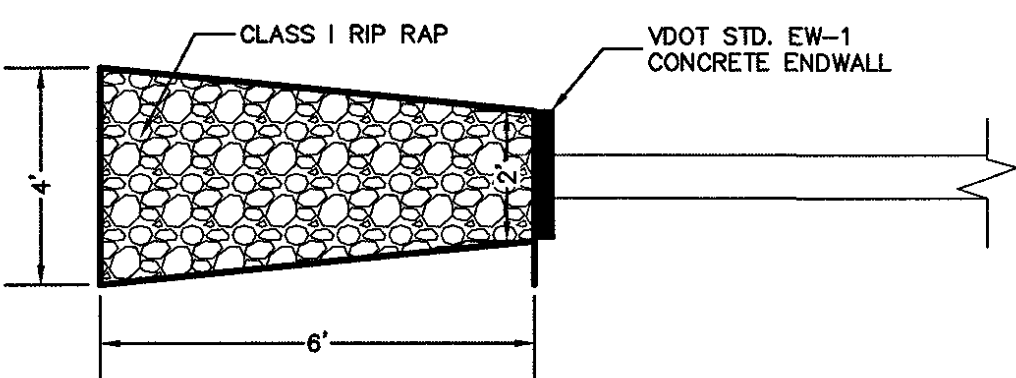


TANK OVERFLOW DETAIL

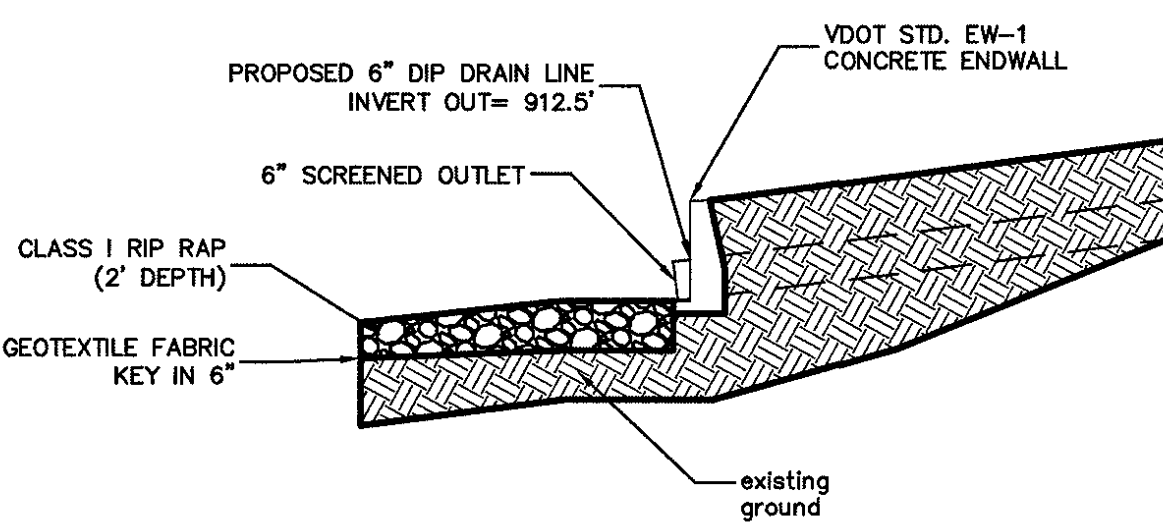


WELDED STEEL TANK DRAIN DETAIL

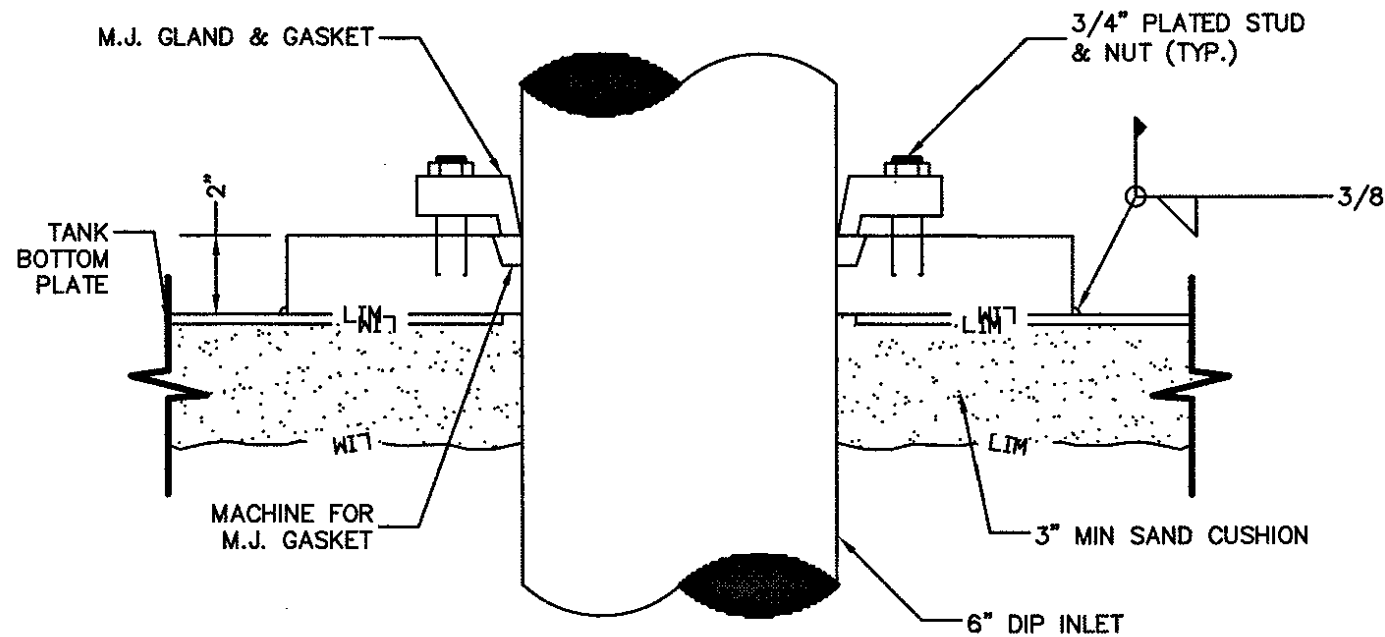
- NOTES:
1. ALL DETAILS SHOWN ON THIS SHEET ARE FOR SCHEMATIC REFERENCE ONLY.
  2. DIMENSIONS AND REFERENCES SHOWN SHALL BE CONSIDERED THE MINIMUM ACCEPTABLE.
  3. TANK, APPURTENANCES, AND FOOTING TO BE DESIGNED BY MANUFACTURER IN ACCORDANCE WITH APPLICABLE AWWA STANDARDS, AND WESTERN VIRGINIA WATER AUTHORITY DRAWINGS AND SPECIFICATIONS.
  4. DRAWINGS AND DETAILS ON THIS SHEET ARE NOT TO SCALE.



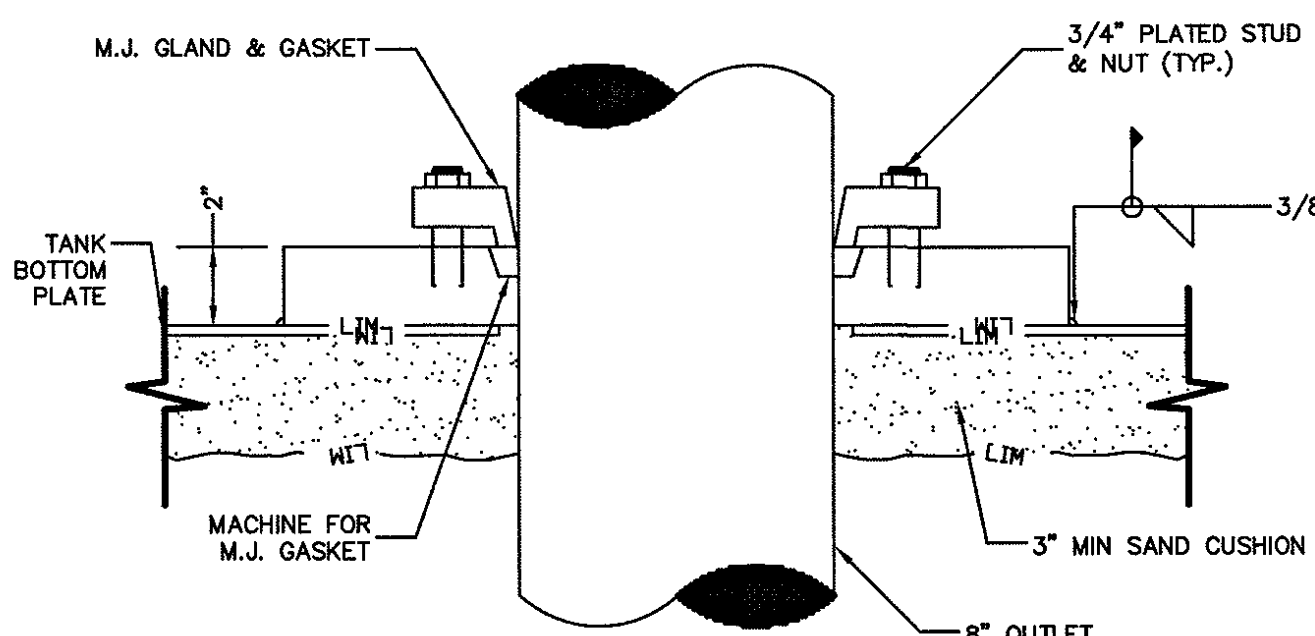
TANK DRAIN OUTLET RIP RAP DETAIL



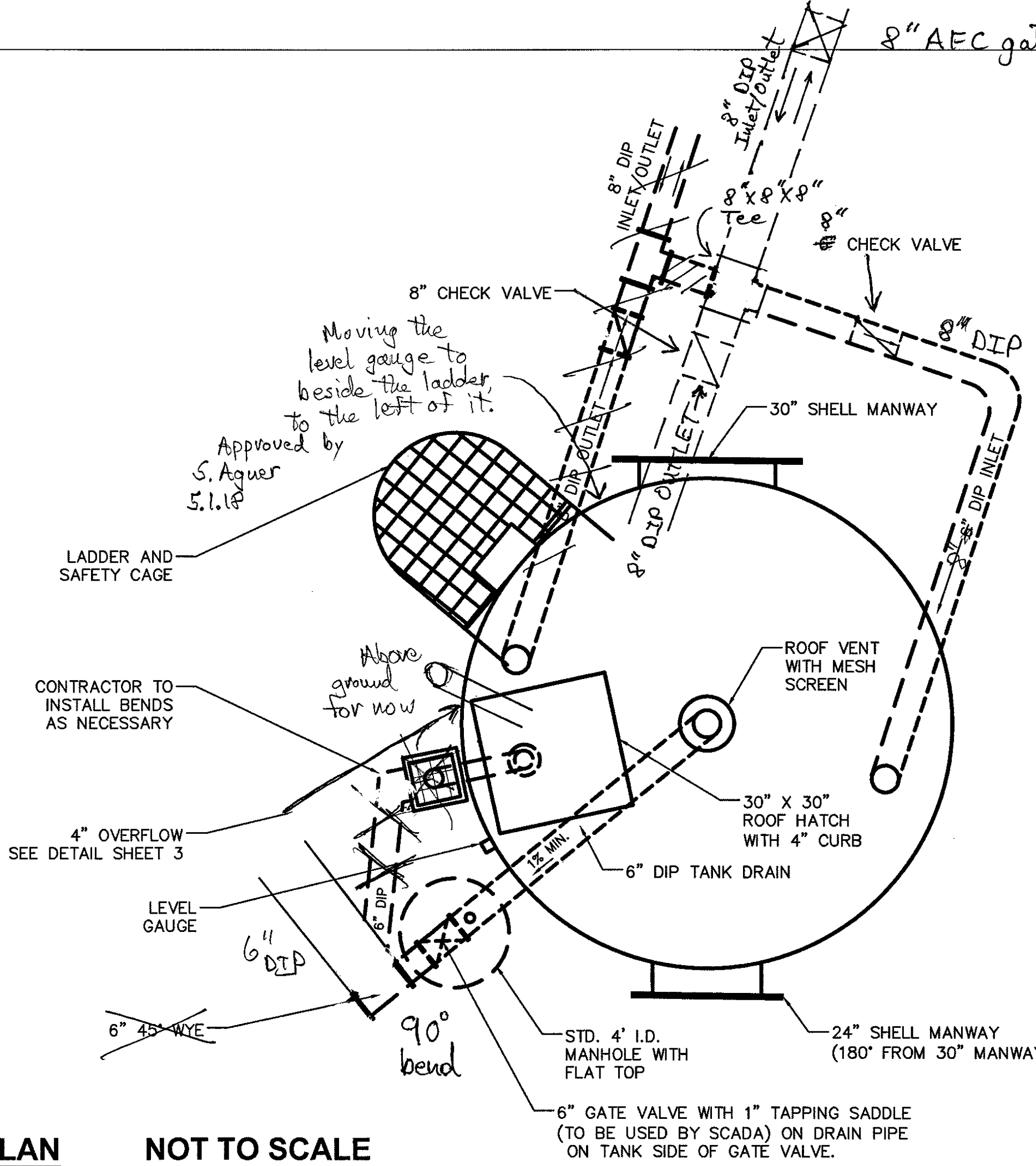
TANK DRAIN OUTLET DETAIL



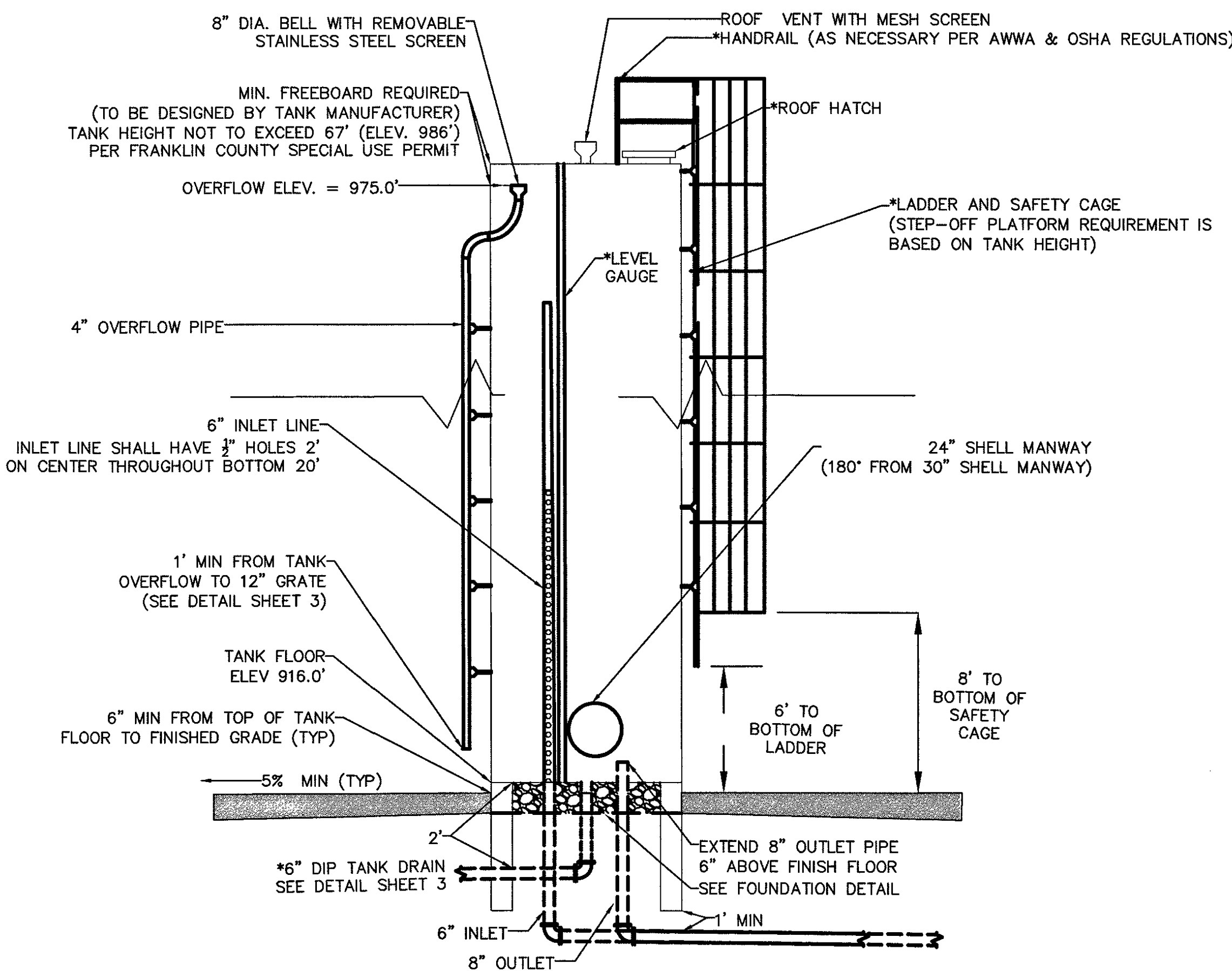
WELDED STEEL INLET DETAIL



WELDED STEEL OUTLET DETAIL



TANK PLAN NOT TO SCALE



TANK ELEVATION NOT TO SCALE

H<sub>2</sub>O Info.  
 Pipe: 8", 6" American DIP,  
 Class 350  
 Valve: 8" AFC gate valve,  
 CCW ON, 27 turns

\* ROTATED FOR CLARITY

WESTERN VIRGINIA  
**WATER AUTHORITY**  
 ENGINEERING SERVICES  
 601 S JEFFERSON ST, SUITE 300  
 ROANOKE, VA 24011  
 540-853-5700

COMMONWEALTH OF VIRGINIA  
 W. NICHOLAS ROBERTSON  
 Lic. No. 0402052204  
 9/5/17  
 PROFESSIONAL ENGINEER

DILLARDS HILL  
 WATER STORAGE TANK  
 (200,000 GALLONS)  
 TANK ELEVATOR  
 PLAN & DETAILS

Rev	Description	Date	By

Designed: AAS  
 Drawn: AAS  
 Checked: WNR  
 Approved:  
 Date: 9/5/17  
 Project: