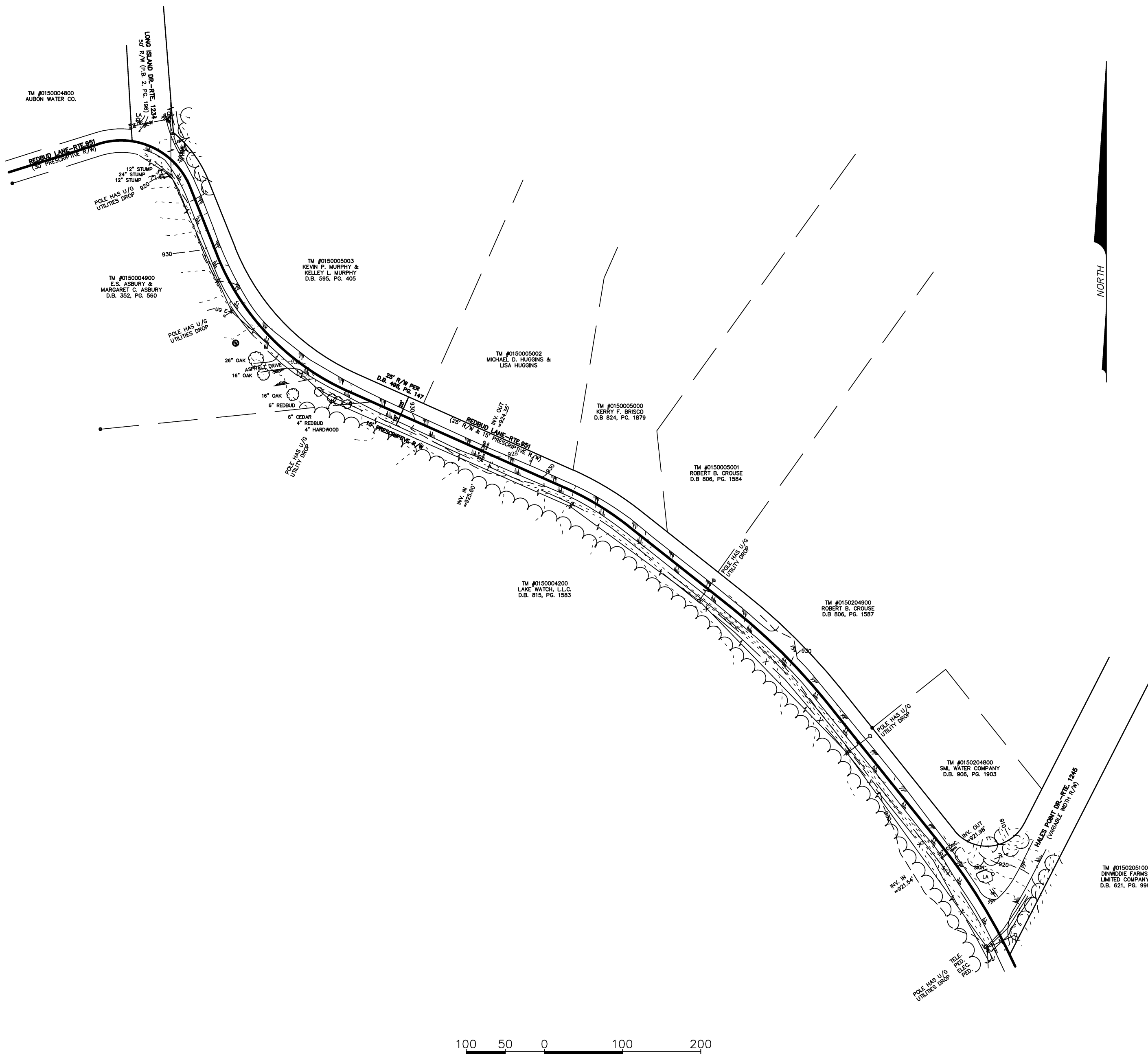
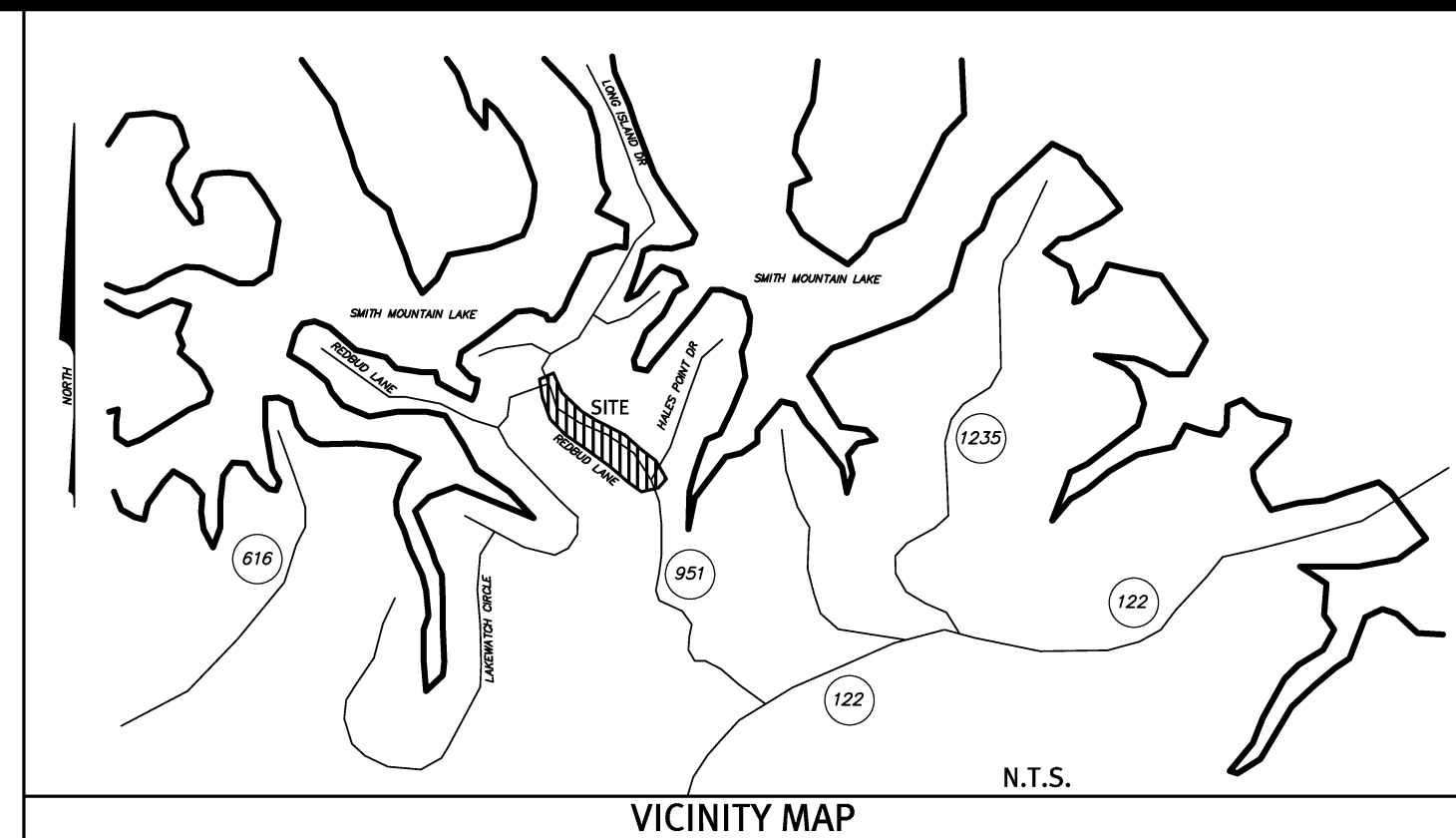


# WATER LINE EXTENSION ASBUILT FOR HALES POINT WATER SYSTEM FRANKLIN COUNTY, VIRGINIA



- EXISTING**
- IPF IRON PIN FOUND
  - WELL
  - ELECTRIC POLE
  - GUY WIRE
  - TELEPHONE POLE
  - TELEPHONE PEDESTAL
  - CLEANOUT
  - WATER METER
  - WATER VALVE
  - CURB DROP INLET
  - STORM MANHOLE
  - SANITARY MANHOLE
  - FIRE HYDRANT
  - LIGHT POLE
  - EDGE OF PAVEMENT
  - EDGE OF GRAVEL
  - EDGE OF CONCRETE
  - CREEK
  - GAS VALVE
  - BENCHMARK
  - SIGN
  - GUARDRAIL
  - EDGE OF WOODS
  - OH E OVERHEAD ELECTRIC
  - OH T OVERHEAD TELEPHONE
  - OH CTV OVERHEAD CABLE TV
  - UG CTV UG CABLE TELEVISION
  - UG E UG ELECTRIC LINE
  - UG FO UG FIBER OPTIC LINE
  - UG G UG GAS LINE
  - UG T UG TELEPHONE LINE
  - STORM SEWER LINE
  - SS SAN. SEWER LINE
  - W WATER LINE
  - 800 EXISTING 10' CONTOUR
  - 798 EXISTING 2' CONTOUR
  - TREE
  - LIGHT POLE
- PROPOSED LEGEND**
- W WATER LINE
  - WATER SERVICE
  - WATER METER
  - BLOW OFF ASSEMBLY
  - AIR RELEASE
  - FIRE HYDRANT
  - CONCRETE ANCHOR
  - GATE VALVE
  - STEEL CASING
  - SLOPE ANCHOR
  - E.O.L. END OF LINE
  - PAVEMENT REPLACEMENT

VIRGINIA UNIFORM CODING SYSTEM FOR EROSION  
AND SEDIMENT CONTROL PRACTICES  
\* CHART TAKEN FROM THE VIRGINIA EROSION AND  
SEDIMENT CONTROL HANDBOOK (JULY 1992)

- SF SILT FENCE
- TS TEMPORARY SEEDING
- PS PERMANENT SEEDING
- MU MULCHING
- CE TEMPORARY CONSTRUCTION  
ENTRANCE
- CIP CULVERT INLET PROTECTION
- IP INLET PROTECTION
- B/M BLANKET MATTING
- SR SURFACE ROUGHING
- OP OUTLET PROTECTION

AVAILABILITY LETTER: 13-358

SML WATER COMPANY  
PO BOX 21173  
ROANOKE, VA 24018  
540-344-9800  
CONTACT: DAVID PETRUS

PLAN REVISIONS		
#	DATE	DESCRIPTION OF REVISION
3	7/14/14	ASBUILT
2	9/5/13	WVWA COMMENTS
1	8/16/13	REVIEW AGENCY COMMENTS

SHEETS
WL1.0
CO.1, WL1.0
ALL

SHEET INDEX	
C 0.0	COVER SHEET
C 0.1	NOTES
C 0.2	EROSION CONTROL NOTES
WL 1.0	PLAN AND PROFILE
WL 2.0	WATER SYSTEM DETAILS
WL 2.1	WATER SYSTEM DETAILS

**RECORD DRAWINGS**

THESE DRAWINGS HAVE BEEN PREPARED (BY MODIFYING WITH ANNOTATIONS TO THE INFORMATION CONTAINED IN THEM) AS THE DRAWINGS, WHICH WERE PART OF THE CONTRACT DOCUMENTS FOR WORK OF THIS PROJECT BY CONTRACTOR, AND ARE DESIGNATED RECORD DRAWINGS. THE MODIFICATIONS ARE BASED UPON INFORMATION FURNISHED BY CONTRACTOR TO OWNER AND ARCHITECT FOR PREPARATION OF THIS RECORD DRAWING. THE INFORMATION PROVIDED BY CONTRACTOR WAS REPRESENTED BY CONTRACTOR, TO OWNER AND ARCHITECT, TO VERIFY THE CONFORMANCE OF THE WORK TO THE REQUIREMENTS OF THE CONTRACT DOCUMENTS, INCLUDING THE CHANGES TO AND DEVIATIONS BY CONTRACTOR FROM THOSE REQUIREMENTS. CONTRACTOR'S INFORMATION MAY NOT HAVE BEEN VERIFIED OR CONFIRMED BY EITHER OWNER OR ARCHITECT, AS OWNER AND ARCHITECT ARE ENTITLED TO RELY, AND HAVE RELIED, ON THE ACCURACY AND COMPLETENESS OF THE INFORMATION PROVIDED BY CONTRACTOR. NEITHER OWNER NOR ARCHITECT ARE RESPONSIBLE FOR ANY ERRORS OR OMISSIONS IN THE INFORMATION AS SO MODIFIED HEREIN, AND NEITHER OF THEM MAKES ANY REPRESENTATIONS, WARRANTY OR GUARANTY OF ANY KIND OR TYPE CONCERNING THAT MODIFIED INFORMATION. ANY PERSON WHO INTENDS TO USE ANY INFORMATION HEREIN FOR ANY PURPOSE IS WARNED AND CAUTIONED TO VERIFY AND TO CONFIRM ANY SUCH INFORMATION BY ACTUAL OBSERVATION AND MEASURING AS NEEDED.

THE ENGINEER AND/OR SURVEYOR TAKES NO RESPONSIBILITY FOR THE LOCATION OR ACCURACY OF THE UTILITIES AS SHOWN HEREON OR ANY UTILITIES WITHIN THE PROJECT THAT MAY NOT BE SHOWN HEREON. THE CONTRACTOR SHALL BE RESPONSIBLE FOR CONTACTING THE UTILITY COMPANIES TO SEE IF ANY UTILITIES EXIST WITHIN THE AREA OF THE PROJECT BEFORE ANY CONSTRUCTION BEGINS. ANY COST INCURRED BY DAMAGING ANY UTILITY WITHIN THE PROJECT SHALL BE AT THE EXPENSE OF THE CONTRACTOR.

48 WORKING HOURS PRIOR TO STARTING THE WORK, THE CONTRACTOR SHALL CALL MISS UTILITY AT PHONE NUMBER 811 AND ADVISE THE NATURE AND LOCATION OF THE WORK.



**HURT & PROFFITT**  
2524 LANGHORNE ROAD  
LYNCHBURG VA 24501  
800.242.4906 TOLL FREE  
434.847.7796 MAIN  
434.847.0047 FAX  
ENGINEERING • SURVEYING • LAND DEVELOPMENT • ENVIRONMENTAL  
GEOTECHNICAL • CONSTRUCTION TESTING & INSPECTION • CULTURAL RESOURCES

COVER SHEET-ASBUILT  
FOR  
HALES POINT WATER SYSTEM  
FRANKLIN COUNTY, VIRGINIA

PROJECT NO. 20130063  
G.L. NO. 298-04-A1.3  
FILE NO. G-13930  
DATE: 6/14/13  
DRAWN BY: WCH  
CHECKED BY: BLC



1973 - 2013  
40  
YEARS OF  
EXCELLENCE  
SHEET NO.  
C0.0